



# Setup Utility

## User's Guide

### Description

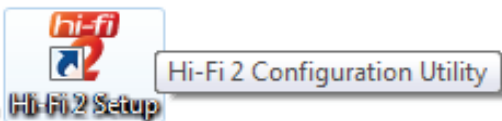
The HAI Hi-Fi2 Setup Utility application is used to configure the Hi-Fi2 system, configure the network settings, give custom names to sources, zones, and groups, configure groups, translate the words that show up on a VSC, issue commands, and to update firmware of the Hi-Fi2 system.

### Installation

The HAI Hi-Fi2 Setup Utility is a free download from the HAI web site at [www.homeauto.com/hi-fi2](http://www.homeauto.com/hi-fi2).

- 1) Download the utility and save it on the computer where the application will be installed.
- 2) Double-click on the installation file (Setup\_HAI\_Hi-Fi\_2\_Setup.exe).
- 3) Follow the instructions on the screen.

After the application has been installed, you may run the application by double-clicking on the icon on the Windows desktop.



### Running the Setup Utility

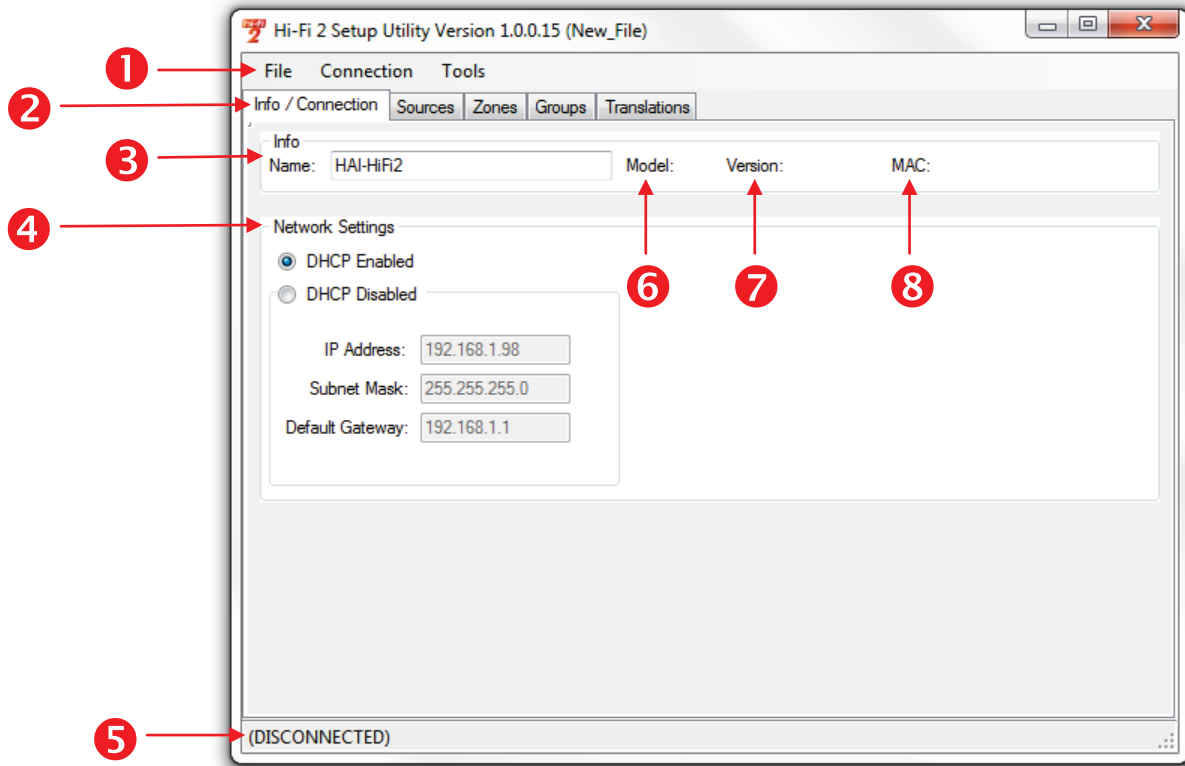
When the application is opened, a default configuration file will be loaded.

Using the default configuration file, you can create a custom configuration file for your Hi-Fi2, or you may open an existing configuration file that was previously saved.

After changes are made to a configuration file, it can be saved for future use.

## Interface Overview

Below is an overview of the Hi-Fi2 Setup Utility user interface.

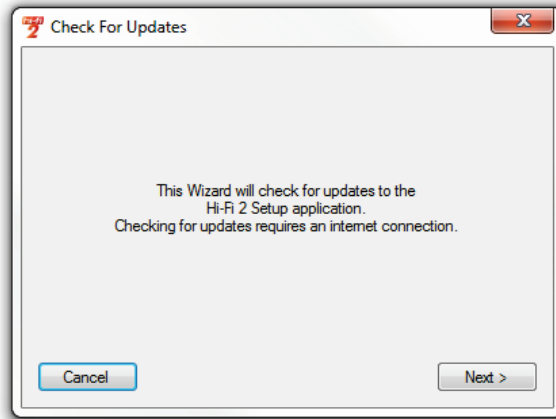


1	<b>Menu Bar</b>	<p>The Menu Bar consists of 3 menus:</p> <p><b>File:</b> Open a new or existing file, close a file, or save a file.</p> <p><b>Connection:</b> Connect to or disconnect from a Hi-Fi2 system, read configuration from a Hi-Fi2 system, write configuration to a Hi-Fi2 system, send commands to a Hi-Fi2 system, or update firmware in a hi-Fi2 system.</p> <p><b>Tools:</b> Configure the serial port properties or check for updates</p>
2	<b>Configuration Tabs</b>	<p>There are 4 Configuration Tabs:</p> <p><b>Info / Connection:</b> View or modify the network name and settings and view the Hardware Revision, Firmware Version, and MAC address</p> <p><b>Sources:</b> Allows you to name and configure the 8 available music sources.</p> <p><b>Zones:</b> Allows you to name and configure the 16 available audio zones.</p> <p><b>Groups:</b> Allows you to name and configure the 8 available audio groups.</p> <p><b>Translations:</b> Allows you to translate the system works that show up on the VSC.</p>
3	<b>Network Name</b>	This is the network name for the Hi-Fi2 system.
4	<b>Network Settings</b>	This is where the network settings for the Hi-Fi2 are configured.
5	<b>Connection Status</b>	This is the connection status of the Setup Utility. This status also includes the connection method (Network or Serial) and transmission status messages.
6	<b>Hardware Revision</b>	This is the hardware revision of the Hi-Fi2 system. Then field will automatically populate when connected to the Hi-Fi2 system.
7	<b>Firmware Version</b>	This is the firmware version of the Hi-Fi2 system. Then field will automatically populate when connected to the Hi-Fi2 system.
8	<b>MAC Address</b>	This is the network MAC address of the Hi-Fi2 system. Then field will automatically populate when connected to the Hi-Fi2 system.

## Check for Updates

When running the Hi-Fi2 Setup Utility for the first time, and periodically thereafter, you should download the latest software updates by using the **"Check For Updates"** option found under the **Tools** menu.

This function requires an active Internet connection.



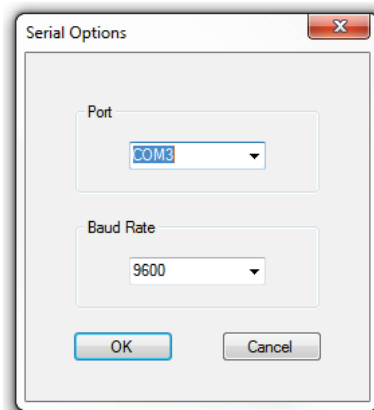
This will start the **"Internet Update Wizard"** that will walk you through the process. Just follow the on screen prompt. In most cases, with a high speed Internet connection, the entire process takes less than a minute. Click **Next** to begin.

If an update to the application is downloaded, the program must be restarted. The wizard will let you know if this is necessary and automatically restart the program for you.

**NOTE:** This does not require a system reboot, just a restart of the Hi-Fi2 Setup application.

## Configuring the Serial Port

If you are connecting to the Hi-Fi2 using the Setup utility, you must configure the serial port for the PC by selecting **Serial Port** form the **Tools** menu.



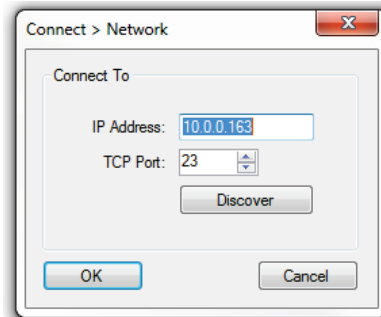
Set the COM Port and Baud Rate for the serial port on the PC.

## Connecting to Hi-Fi2 via Serial

To connect to a Hi-Fi2 system using a serial connection, select **Connect Serial** from the **Connection** menu. If the serial port is properly connected and configured, the connection status will change to: **CONNECTED: (SERIAL)**

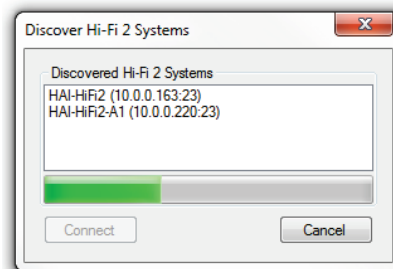
## Connecting to Hi-Fi2 via Network

To connect to a Hi-Fi2 system over the local network, select **Connect Network** from the **Connection** menu. The **Connect > Network** dialog will be displayed.

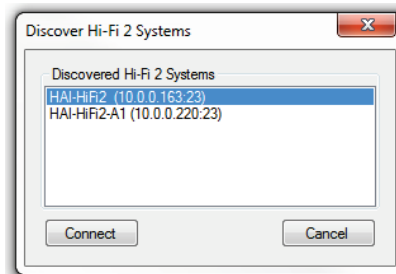


If you know the IP Address and TCP Port for the Hi-Fi2 system, you can enter it into the respective edit boxes and then click **OK** to connect.

If you don't know the IP Address and/or TCP Port for the Hi-Fi2 system, click **Discover** to display the **Discover Hi-Fi 2 Systems** dialog.



If more than one Hi-Fi2 system resides on the network, the discovery tool will display all available Hi-Fi2 systems on the network.



Highlight the Hi-Fi2 system in the list and click **Connect** to connect to the Hi-Fi2 system. If successful, the connection status will change to: **CONNECTED: (NETWORK)**