

Leviton Plug-On Surge Protective Device and Circuit Breaker



Leviton's new plug-on surge protective device is designed for easy in-panel installation and provides effective surge protection for the entire home.

Now required in the 2020 NEC®, panel-level surge protection is key for critical circuits that power equipment in residential applications. Featuring (2) 1-pole circuit breakers with separate operating handles, there's no loss of space inside the panel. Line-side power ensures surge protection continues, even after a breaker is OFF or tripped.

An easy-to read LED indicator light displays power and protection status and also remains lit, even after a breaker is tripped.

- All plug-on Installation: installs just like a circuit breaker
- Protects from surge events
- Line-side powered LED lights

Leviton Mfg. Co., Inc.

201 North Service Road, Melville, NY 11747 Tech Line: 1-800-824-3005 Fax: 1-800-832-9538 www.leviton.com
 © 2021 Leviton Manufacturing Co., Inc. All rights reserved. Subject to change without notice.

PRODUCT SPECIFICATIONS

Specifications for 15 and 20 Amp Surge Breakers

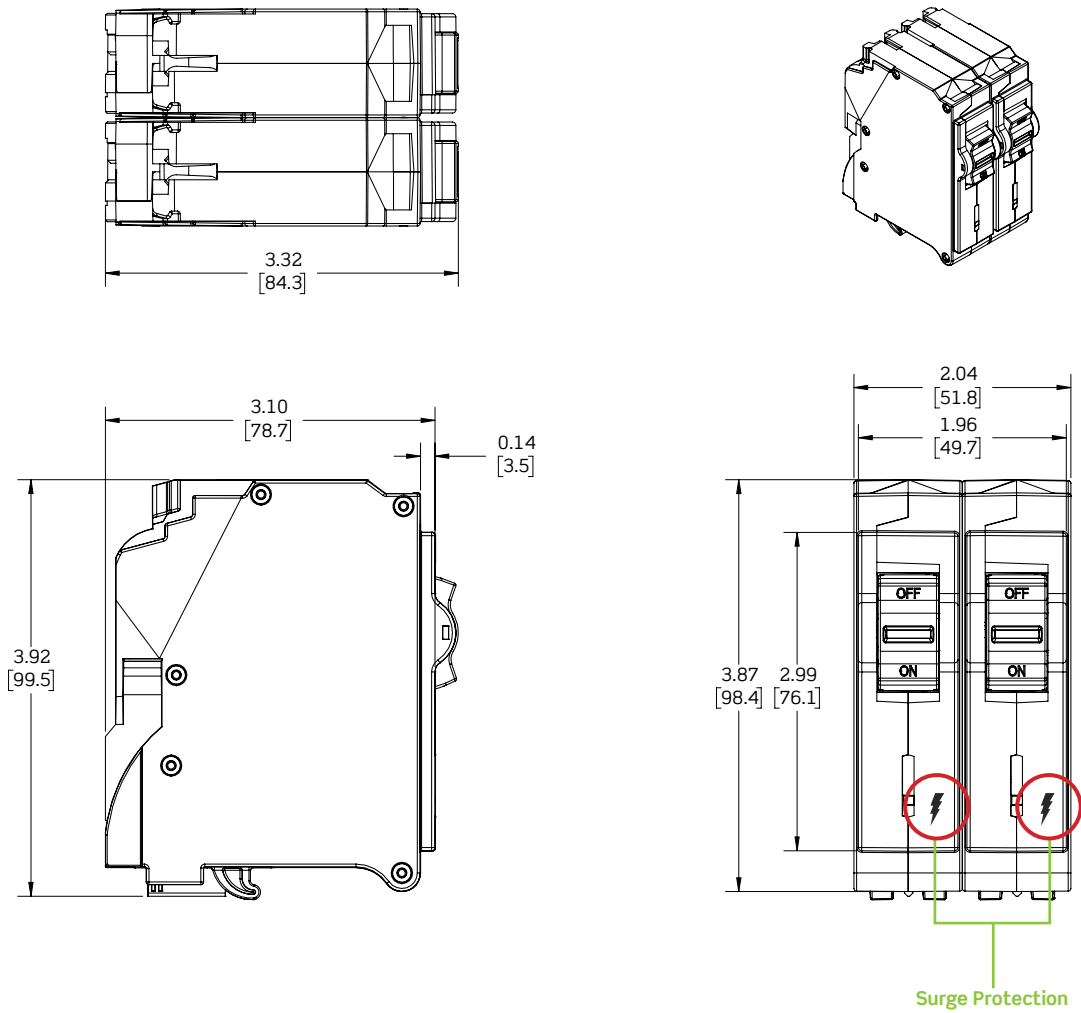
Part Number	LSPD1 (hydraulic magnetic) and LSPD1-T (thermal magnetic)	LSPD2 (hydraulic magnetic) and LSPD2-T (thermal magnetic)
Certifications	UL 489, UL 1449, and CSA C22.2 No.269.1	
SPD Type	Type 1	
Maximum Surge Current	25kA (Per Mode)	
System Voltage	120/240V	
Amp Rating	15 Amp	20 Amp
Short Circuit Rating	10kA	
Frequency	50/60HZ	
Maximum Continuous Operating Voltage (MCOV)	L-N = 150V L-L = 300V	
Voltage Protection Rating (VPR)	600V L-N and 1200V L-L	
Connection Method	All Plug-ON	
Surge Protection Diagnostics	Green LED = Protected Red LED = NOT Protected, Replace OFF = No Power	

Handle operation and LED diagnostics - note each pole is independent

Handle Window		LEDs		Circuit Breaker / SPD Status
Left Pole	Right Pole	Left Pole	Right Pole	
Green	Green	ON - Green	ON - Green	ON / Protected
Red	Red	ON - Green	ON - Green	Overload or Short Circuit Trip / Protected
Red	Red	ON - Red	ON - Red	Overload or Short Circuit Trip / NOT Protected
White	White	OFF	OFF	Manual OFF / No Power

PRODUCT SPECIFICATIONS

DIMENSIONS FOR A 15A AND 20A SPD BREAKER



Catalog	No. Pole	Max Amp Rating	Voltage
LSPD1	2	15A	120V/240V
LSPD2	2	20A	120V/240V
LSPD1-T	2	15A	120V/240V
LSPD2-T	2	20A	120V/240V

Leviton Mfg. Co., Inc.

201 North Service Road, Melville, NY 11747 Tech Line: 1-800-824-3005 Fax: 1-800-832-9538 www.leviton.com
 © 2021 Leviton Manufacturing Co., Inc. All rights reserved. Subject to change without notice.



Leviton Manufacturing Co., Inc.

201 North Service Road, Melville, NY 11747-3138
Telephone: 1-800-323-8920 • FAX: 1-800-832-9538
Tech Line: 1-800-824-3005
Mon-Fri 8am-10pm EST, Saturday 9am-7pm EST

Visit our Website at: www.leviton.com

© 2021 Leviton Manufacturing Co., Inc. All rights reserved.