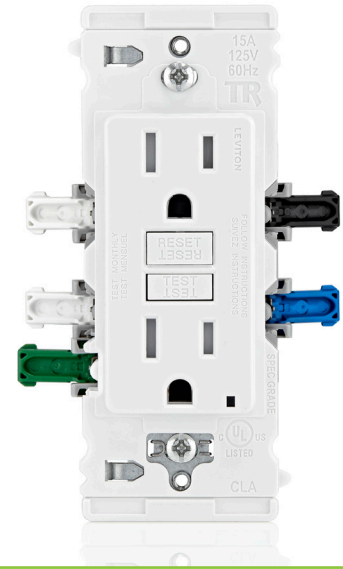


Lever Edge™

GFCI Protection

Partnering Safety and Innovation



Industry-leading quality, patented Reset Lockout technology, and the fastest and easiest installation on the market make **Lever Edge** GFCIs a smart choice for ground-fault circuit interrupter protection. Installers using Lever Edge will experience an installation process as unique as it is practical. The color-coded levers provide the foundation for quick installation by helping to rapidly identify the correct terminal for wiring, including a lever terminal for the ground wire. The lever termination assures a positive connection has been made. This patented design has a snap feature with an audible ‘click’ so installers can be confident with every termination.

Lever Edge GFCIs are engineered to meet the UL standard for auto-monitoring (self-test).

All Leviton GFCIs periodically conduct an automatic self-test to confirm that protected power is available. If the GFCI detects a problem, one or more of the following will occur:

- Power will be denied (trip with no ability to reset)
- Trip with the ability to reset, subject to the next auto-monitoring test cycle or repeated trip
- Visual indication

The **Lever Edge** GFCI is available in Tamper-Resistant and Weather-Resistant/Tamper-Resistant models.

Applications

Residential - Kitchens, bathrooms, garages, basements, laundry rooms, outdoors, wet sink and other wet locations around the home

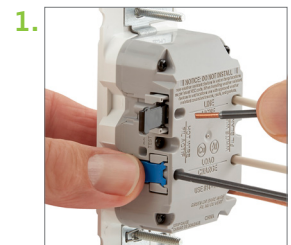
Educational Facilities - Classrooms, restrooms, laboratories, dormitories and kitchens

Airports - Public bathrooms, general use and maintenance areas

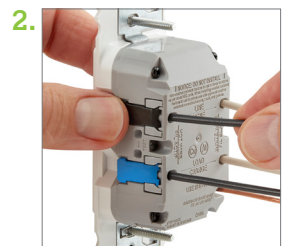
Restaurants, Lodging and Retail Malls - Public bathrooms, general use and maintenance areas

Commercial Offices - Bathrooms, basement areas, hallways and kitchen facilities

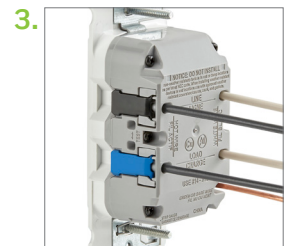
Public Areas - Wherever receptacles are located near wet or damp locations



PUSH.
Faster and easier to wire



CLICK.
Audible ‘click’ confirms secure connection



DONE.
Terminate with confidence

Features and Benefits

Self-Test

- Provides continuous ground-fault protection - detects and trips on actual ground-fault even when self-test is being conducted
- On initial power up, tests the GFCI within 5 seconds
- Auto-monitoring exceeds the UL requirement
- Auto adapts and shifts to more frequent testing if potential problem is detected
- Electronics are designed to minimize any false triggers

Status Indicator Light

Leviton GFCI devices feature an LED Status Indicator Light which provides a visual indication to the user of the status of GFCI protection. This is a convenient way to check the level of protection at-a-glance.

GREEN LED - NORMAL OPERATION

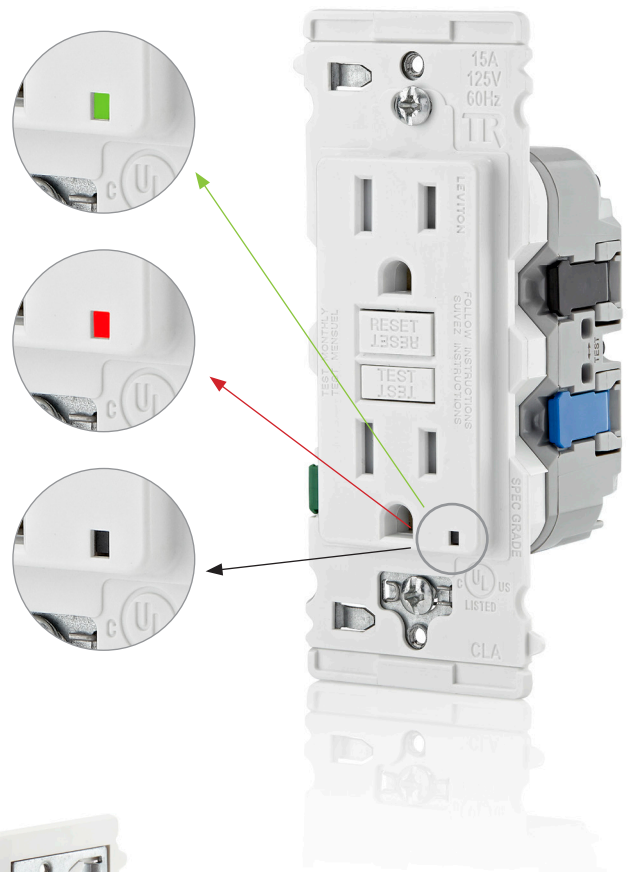
- GFCI has passed self-test and is providing power

RED LED - ALERT!

- Blinking - Initial self-test upon first power up
- Solid or blinking - Press TEST and RESET buttons to reset GFCI
- If GFCI will not reset OR solid or blinking red continues, replace device

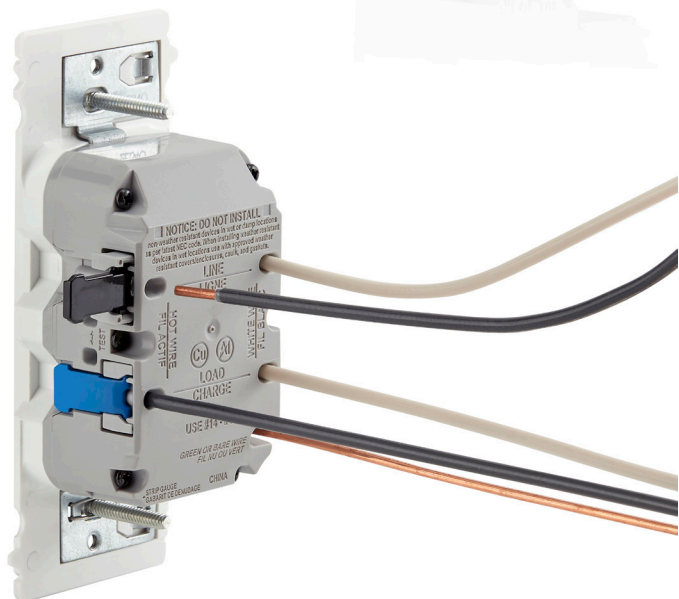
NO LED - NO POWER

- GFCI in tripped state
- Press RESET button
- If GFCI will not reset, no power on the circuit



Installation Features

- Color-coded lever terminals for fast, efficient wiring;
Unique **BLUE** lever for the load wire reduces risk of miswiring
- Strap's unique tongue and groove alignment feature offers quicker trim out on multi-gang Lever Edge installations
- Levers have a snap feature to assure connection has been made; audible click confirms lever door is closed
- No exposed metal parts for enhanced safety; eliminates need for electrical tape
- Lever connectors work with 12 gauge and 14 gauge stranded and solid copper wire
- Wire openings prevent wire insulation from being inserted into the terminals
- One standard strip gauge for all Lever Edge devices
- Easily accessible test openings for circuit testers
- Strap works with any sized wallplate
- Coordinates seamlessly with other Decora® devices
- Can be used with Decora and Decora Plus™ screwless wallplates

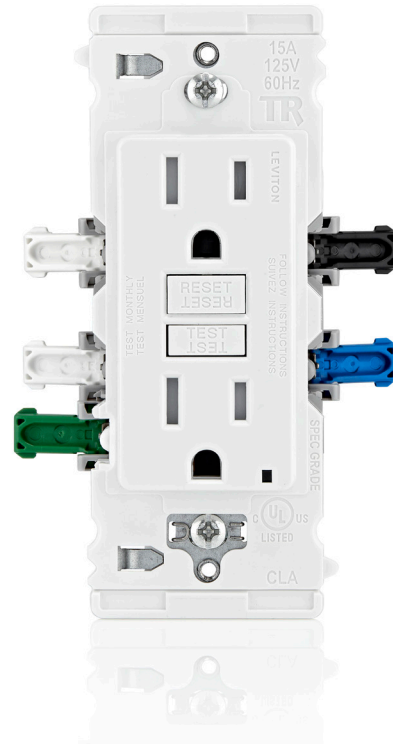


General Features

- Patented bridge contact provides individual sets of contacts for GFCI receptacle face and downstream receptacles; no power will be delivered to receptacle face if improperly wired (line-load reversed)
- Trip time meets or exceeds UL requirements
- Improved immunity to high frequency noise reduces nuisance tripping
- Our patented Reset Lockout technology prevents reset if the GFCI is damaged and cannot respond to a ground fault
- Status Indicator Light provides simple, intuitive feedback on power and protection status
- Silver alloy contacts
- Impact-resistant thermoplastic cover and body
- TEST and RESET button colors match device face
- Compatible with all Decora devices and wallplates
- Limited Two-Year Product Warranty

Weather-Resistant Models

- Designed for wet and damp locations to meet the requirements of NEC 406.8
- Galvanized strap and stainless steel screws
- Conformal coated PC board to protect critical components from moisture
- Cold impact-resistant face and buttons
- UV stabilized plastics



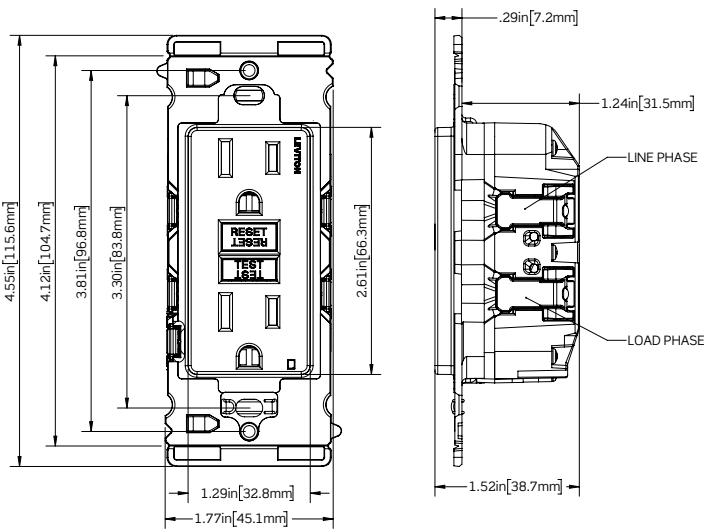
Agency Standards and Compliance

- Meets the latest UL requirements
- UL Standard 943 Class A (GFCI) and 498 (receptacles)
- UL Listed (File #E-48380)
- NEMA 5-15R

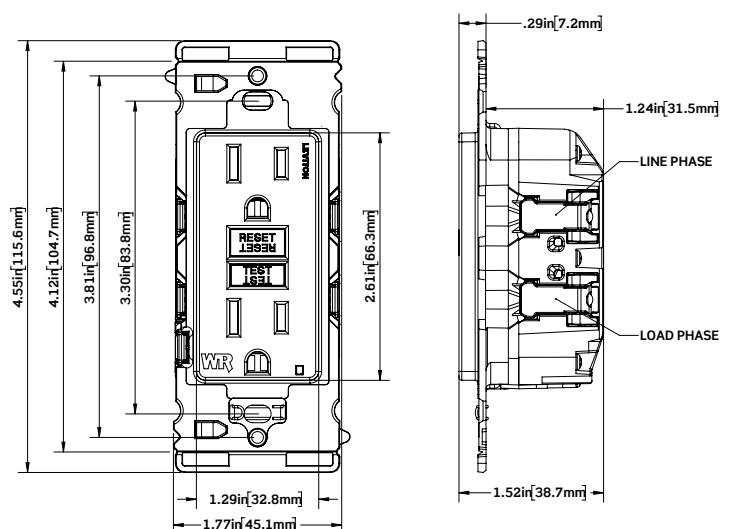
Material Characteristics

- Operating Temperature: -35°C to 66°C
- Material: Face, Thermoplastic; Body, Polycarbonate
- Strap Material: Plastic and Galvanized Steel
- Termination: Side Lever
- Environmental: Flammability UL 94 V2 Rating

Dimensional Drawings



15A Tamper-Resistant Self-Test GFCI



15A Weather-Resistant/Tamper-Resistant Self-Test GFCI

Ordering Information

Cat. No.	Description	Rating	Color
EGFT1	Tamper-Resistant Self-Test GFCI	15A-125V @ Receptacle 20A-125V Feed-Through	White
EGFW1	Weather-Resistant/Tamper-Resistant Self-Test GFCI		White



Leviton Manufacturing Co., Inc.

Tech Line: 1-800-824-3005

Mon-Fri 8am-10pm EST, Saturday 9am-7pm EST, Sunday 9am-5pm EST

For 24/7 product support visit www.leviton.com/support

Visit our Website at: www.leviton.com/gfci

© 2024 Leviton Manufacturing Co., Inc. All rights reserved.
All trademarks are the property of their respective owners.



Scan to learn more.
leviton.com/leveredge

JC-072324-dp