

Traditional Style, Modern Control



Applications

Toggle Slide Controls are designed for both single pole (one location) and 3-way (two location) applications. They feature a traditional toggle switch that provides preset ON/OFF switching and a smooth, integrated slide bar for fine adjustment of lighting levels.

Toggle Slide Dimmers provide smooth, slide-action, full-range dimming for incandescent, dimmable LED, dimmable CFL, halogen and magnetic low voltage (MLV) loads. The line also includes a Fan Speed Control.

For a traditional home, the classic style of Toggle Slide Controls offers the ideal way to upgrade the functionality of devices without compromising the character of the décor.



Wallplate sold separately

Features and Benefits

- Integrated linear full-range slide control for easy, precise operation
- Separate ON/OFF toggle switch that preserves the selected setting
- Provides single pole (one location) or 3-way (two location) control when paired with a 3-way switch
- Slim, compact housing fits easily into a standard wallbox
- Suitable for multi-gang installations
- No removal of fins required for multi-gang installations
- Available in White, Ivory and Light Almond
- Built-in radio/TV interference filter

LED/CFL/Incandescent/Halogen/MLV Dimmers

- TSL06 and TSM10 feature a built-in starting technology
- Wider dimming range for LED and CFL lamps than conventional incandescent dimmers
- Customize the dimming range of LED lamps using the minimum/maximum light level adjustment to eliminate flicker, maximize energy savings, and optimize ambiance
- Forward phase control
- Locator light built into switch can be disabled

Quiet Fan Speed Control

- 1.5 Amp, 3-speed
- Combines a toggle ON/OFF switch with a contemporary slender slide bar for the selection of low, medium or high fan speeds
- Ideal for libraries, home offices, bedrooms and any area where ceiling fan noise could become distracting

Typical Specifications

Operating Temperature Range: 0°C to 55°C
 Storage Temperature Range: 10°C to 85°C
 Relative Humidity: 20% to 90% non-condensing

Specifications At-A-Glance

	TSL06	TSM10	TSF01
Voltage, Frequency	Dimmer		Fan Speed Control
120VAC-60Hz	Yes	Yes	Yes
Load Rating			
Incandescent/Halogen	600W	1000W	-
LED/CFL	300W	400W	-
MLV	-	1000VA	-
Motor	-	-	1.5A
Mechanical			
Neutral Required	No	No	No
Single Pole/3-Way	Yes	Yes	Yes
Locator Light	Yes	Yes	No

Maximum Load For Multi-Gang Applications

In multi-gang applications de-rating may be required in accordance with the following chart.

Cat. No.	Single	2-gang	3-gang or more
TSL06	600W Incandescent/Halogen 300W (2.5A) LED/CFL	500W Incandescent/Halogen 300W (2.5A) LED/CFL	500W Incandescent/Halogen 300W (2.5A) LED/CFL
TSM10	1000VA MLV 400W (3.75A) LED/CFL 1000W Incandescent/Halogen	800VA MLV 400W (3.33A) LED/CFL 800W Incandescent/Halogen	700VA MLV 400W (3.33A) LED/CFL 700W Incandescent/Halogen
TSF01	1.5A	1.5A	1.5A

Agency Standards and Compliance

Dimmers

- cCSAus Certified to Standard 184.1
- Complies with UL 1472
- NOM

Fan Speed Control

- cCSAus Certified to C22.2 No. 156
- Complies with UL 1917
- NOM

Warranty Information

Five-Year Limited Warranty

Installation Considerations

TSL06 and TSM10: LED and CFL lamps marked or rated as dimmable can be used with this dimmer. For a complete list of approved LED lamps visit www.leviton.com/led.

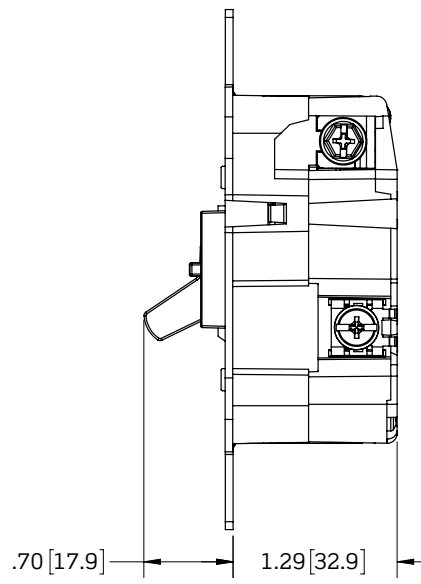
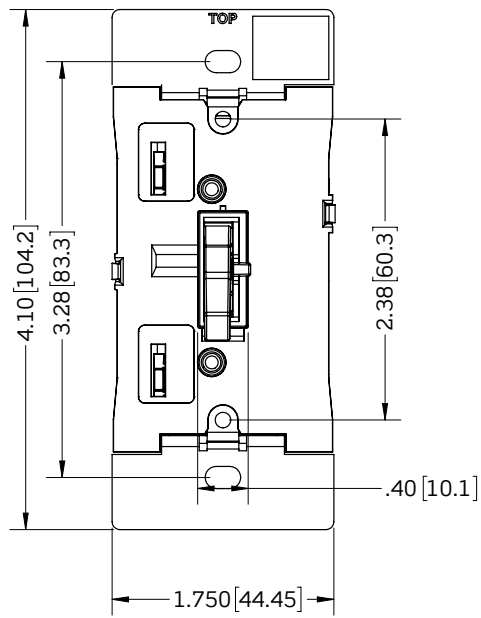
Mode Selector Switch



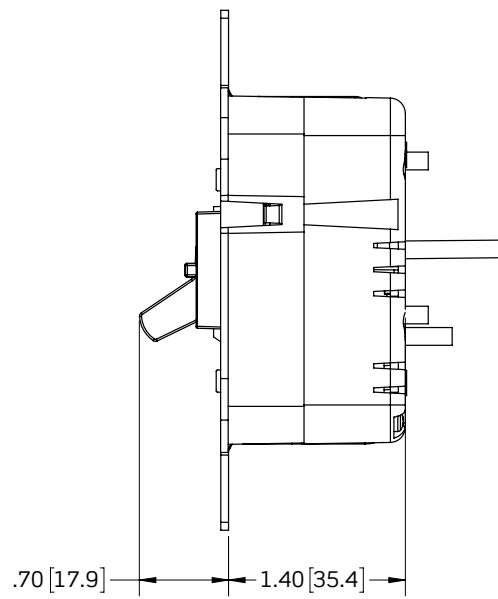
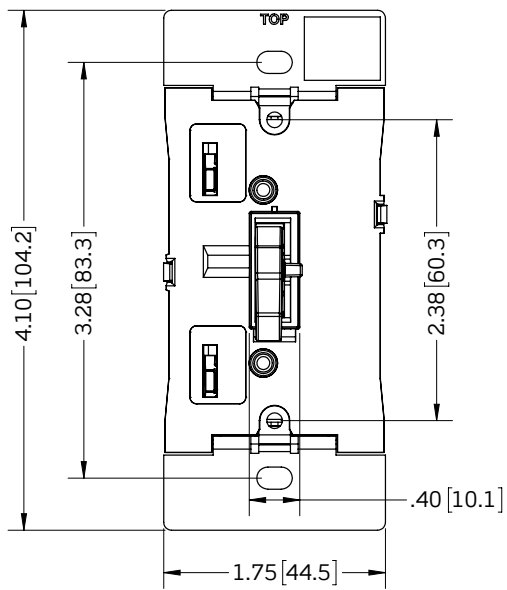
- Provides options to optimize performance for LED lamps to help ensure best performance for the load being controlled (factory preset to Mode A)
- Switch also enables the programming mode to adjust maximum and minimum light levels to match the full range of load and helps eliminate flicker for a smoother experience

Dimensional Drawings

Cat. No. TSL06

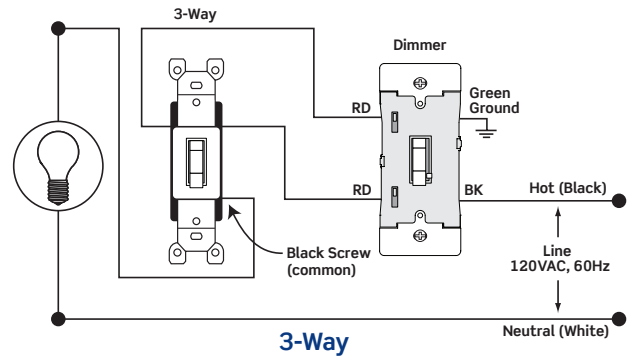
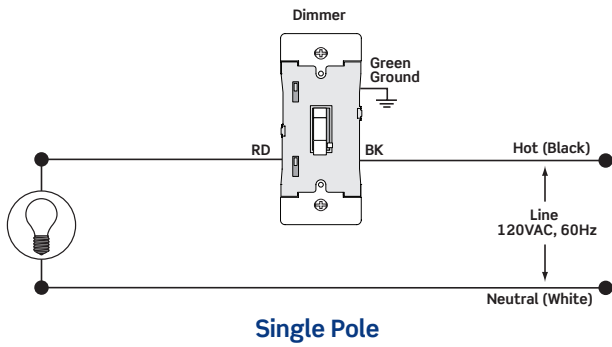


Cat. No. TSM10, TSF01

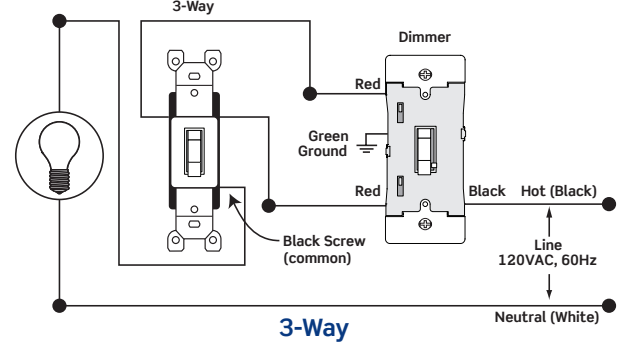
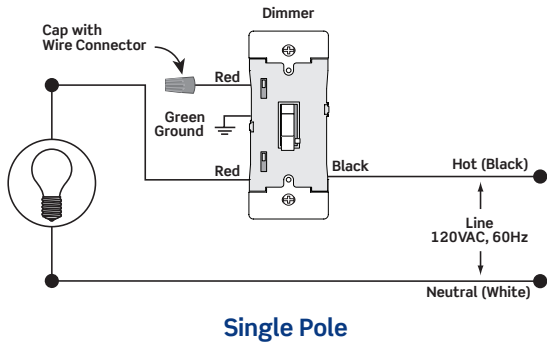


Wiring Diagrams

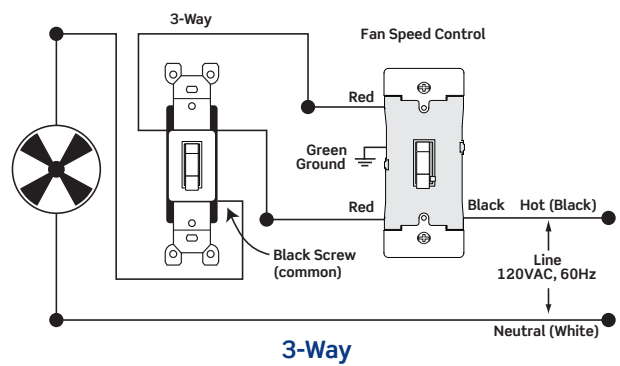
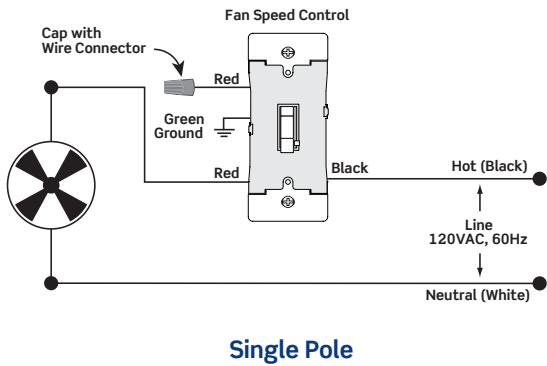
Cat. No. TSL06



Cat. No. TSM10



Cat. No. TSF01



Ordering Information

All Toggle Slide Controls provide single pole or 3-way control when used with a 3-way switch.

Description	Cat. No.	Rating	Color*
LED/CFL/Incandescent Dimmer with LED locator	TSL06	300W LED/CFL 600W Incandescent/Halogen	W, I, T, G, E, B
Magnetic Low Voltage Dimmer with LED locator	TSM10	1000W MLV 400W LED/CFL 1000W Incandescent/Halogen	W, I, T
Quiet Fan Speed Control, 3-speed	TSF01	1.5A Motor	W, I, T

*To order colors, add suffix to basic catalog number: White (-W), Ivory (-I), Light Almond (-T), Gray (-G), Black (-E) and Brown (-B).



Leviton Manufacturing Co., Inc.

Tech Line: 1-800-824-3005

Mon-Fri 8am-10pm EST, Saturday 9am-7pm EST, Sunday 9am-5pm EST

For 24/7 product support visit www.leviton.com/support

Visit our Website at: www.leviton.com/dimmers

© 2022 Leviton Manufacturing Co., Inc. All rights reserved. All trademarks are the property of their respective owners.



JA-070522-dp