

The Leviton Load Center

Series Ratings



THE FUTURE IS ON®

LEVITON

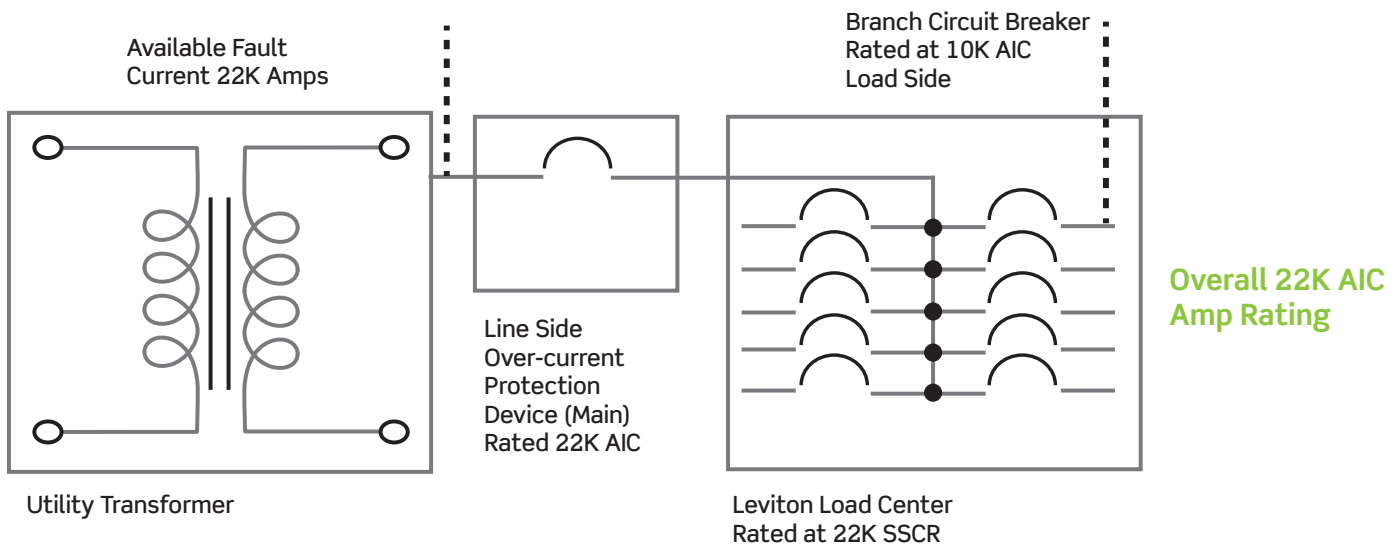
Series Rated System Definition

NEC Section 240.86 includes requirements that allow a circuit breaker to be used on a circuit having an available fault current higher than the marked interrupting rating, provided it is connected on the load side of an acceptable overcurrent protective device having a higher rating, and provided that the series combination complies with specific requirements. The combination of these devices has been found to work together under fault conditions to clear the fault and protect the equipment.

Leviton Load Center Series Rating

The Leviton Load Center and Breakers are series rated up to 22k AIC.

Example of Series Rated System



Leviton Load Center Series Rating with Other Upstream Protection Devices

Main Breakers or Upstream Protection Device

Line Side Upstream Overcurrent Protective Device													Series Connected Rating (AMPS)
Manufacturer	Type												
Square D	QOB-VH	QO-VH	QDP-TM	QOM-VH	QGP	QGL	*	*	*	*	*	*	22,000
Eaton	BRH	CV	CCVH	BWH	CSR	BRHH	BRHX	BRX	PDG2	CVS	CVH	BJH	22,000
Siemens	QPH	QSH	QJH2	QNR	QNRH	QR	QRH	*	*	*	*	*	22,000
GE	TMQL	TMQV	TMQC	TMQF	THHQL	THHQB	THHQC	THQD	TMQA	*	*	*	22,000
Milbank	UQFBH	*	*	*	*	*	*	*	*	*	*	*	22,000
T-FUSE (200A Max)	300VAC	*	*	*	*	*	*	*	*	*	*	*	22,000
Leviton	ALL												22,000
Other or No Breaker													10,000

Visit our Website at: www.leviton.com

© 2023 Leviton Manufacturing Co., Inc. All rights reserved.
All trademarks are the property of their respective owners.



Leviton Manufacturing Co., Inc.

201 North Service Road, Melville, NY 11747-3138

Telephone: 1-800-323-8920 • FAX: 1-800-832-9538

Tech Line: 1-800-824-3005

Mon-Fri 8am-10pm EST, Saturday 9am-7pm EST, Sunday 9am-5pm EST



SC-111423-dp