



# The Leviton Load Center

Meter-Load Center Combination Panels

THE FUTURE IS ON®

**LEVITON**®





# Award Winning Design Meets Smart Energy Management

Leviton's portfolio of meter-combination load centers feature our award-winning all plug-on design and install faster. Wire the entire panel at rough-in, without a single circuit breaker present. Features like advanced LED diagnostics, whole-home energy consumption data, and the ability to schedule breaker activity make it the smart solution for managing the home's electrical system.



**Cat. No. LS815-BTD**

# Meter Main UG/OH Service Entrance with Distribution Section and Feed-Through Lugs

## Features

- NEMA 3R
- UL listed
- 22kA Interrupt Rating
- In Compliance with Standards UL 50, UL 50E, UL 67
- Overhead and Underground feed
- Powder Coated
- Maximum Opening 2.5" for Overhead Conduit, 3" for Underground (for-BTD version)

\*Other meter main options available, see part numbers below

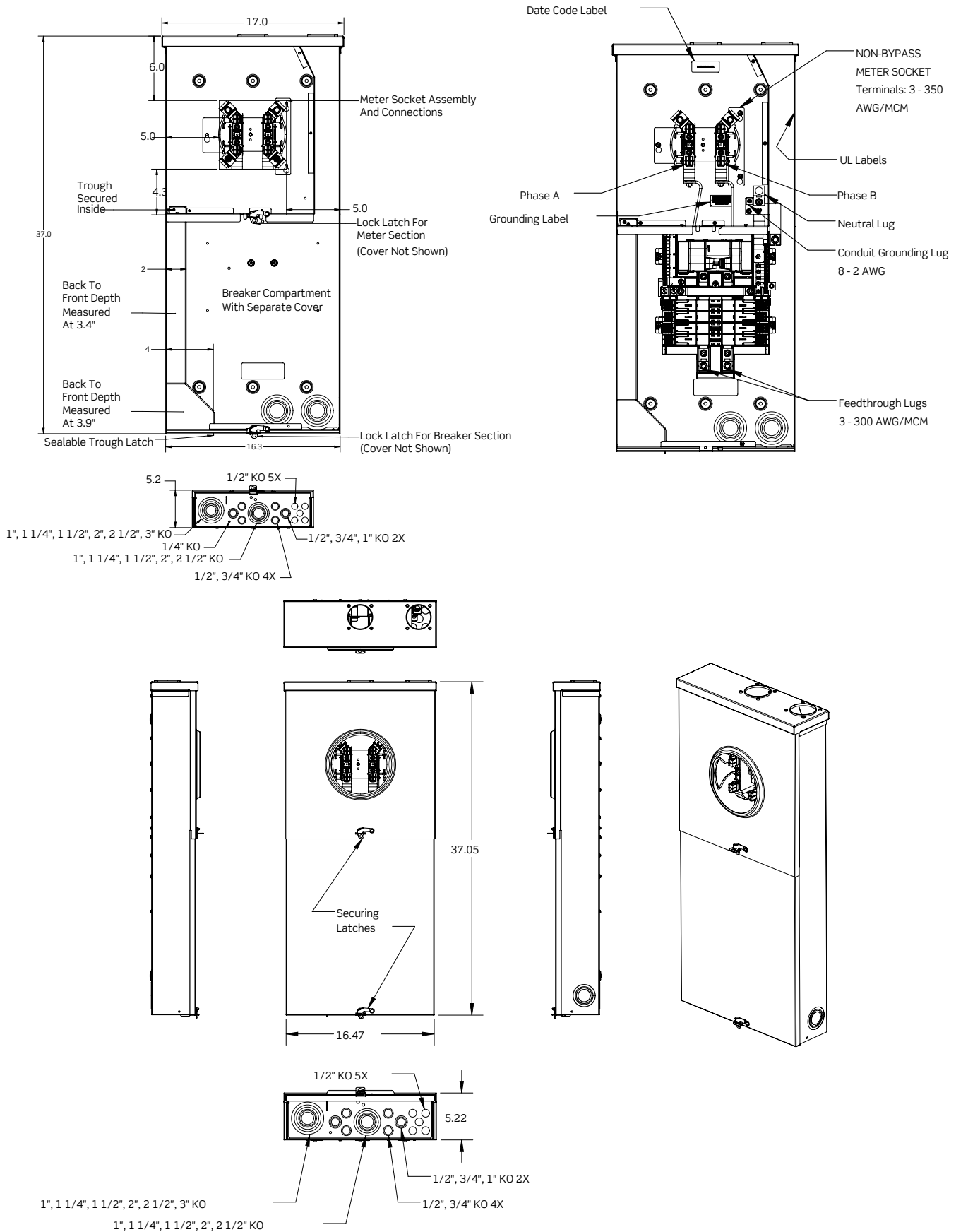
## Meter Main, UG/OH Service Entrance with Distribution Section and Feed-Through Lugs

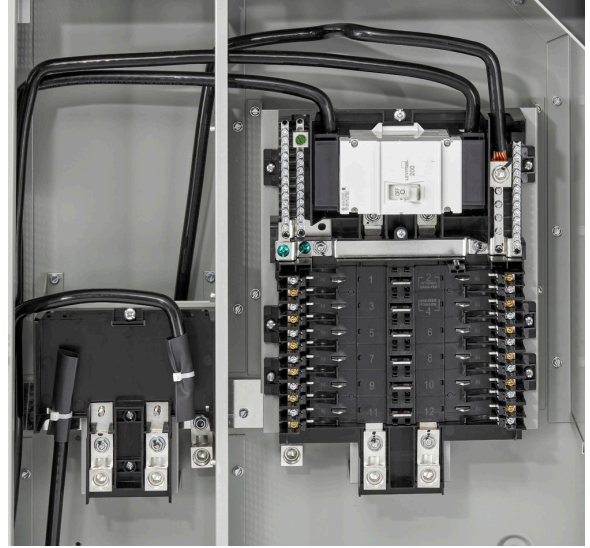
Amp Rating	# of Spaces/Circuits	Catalog Number	Bypass	Cover
150	8	LS815-BTD*	None	Ringless
200	8	LS820-BTD*	None	Ringless
150	8	LS815-BHD	Horn	Ringless
200	8	LS820-BHD	Horn	Ringless
150	8	LS815-BLD	Lever	Ringless
200	8	LS820-BLD	Lever	Ringless
150	8	LS815-B5D	Lever with 5th Jaw Installed	Ringless
200	8	LS820-B5D	Lever with 5th Jaw Installed	Ringless
150	8	LS815-BRD	None	Ring Type
200	8	LS820-BRD	None	Ring Type

\*Includes internal trough to enable branch wiring through top of enclosure

# Dimensional Drawing

## Meter Main, Ringless with No Bypass, UG/OH Service Entrance with Distribution Section, Internal Trough with Top Exit and Feed-Through Lugs - 150 & 200 Ampere





**Cat. No. LS130-S5D, LS140-S5D**

# Meter Main UG/OH Service Entrance with Distribution Section and Feed-Through Lugs

## Features

- NEMA 3R
- Class 320 Meter Socket
- 22kA Interrupt Rating
- In Compliance with Standards UL 50, UL 50E, UL 67, UL 869A
- NEC 2020, Article 230.71 compliance
- Powder Coated
- Internal trough facilitates overhead wiring for branch circuits
- 5th Jaw factory installed at 9 o'clock position and can be removed if not applicable

## Class 320 Meter Main, UG/OH Service Entrance with Distribution Section and Feed-Through Lugs

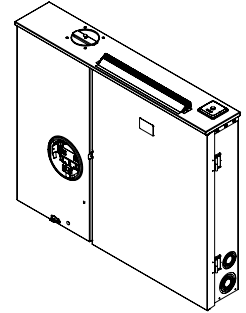
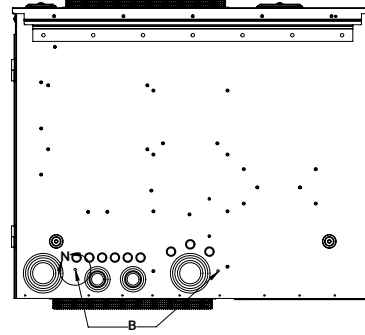
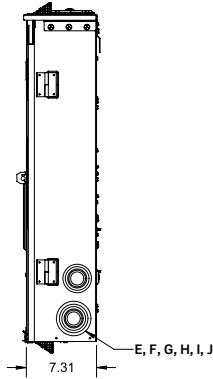
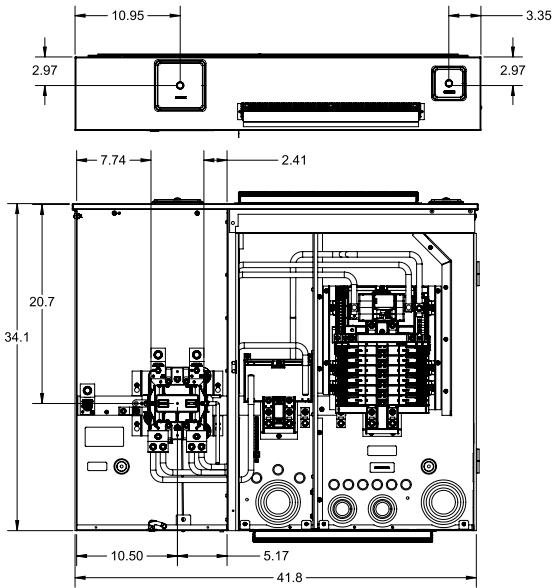
Amp Rating	# of Spaces/Circuits	Catalog Number	Bypass	Cover
300	12	LS130-S5D*	Lever	Ringless
400	12	LS140-S5D*	Lever	Ringless

\*LS130-S5D comes with (1) 150A main circuit breaker factory installed and LS140-S5D comes with (1) 200A main circuit breaker factory installed feeding 12-space distribution section with feed-through lugs

\*Secondary main circuit breaker sold separately

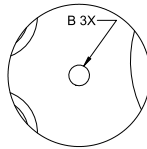
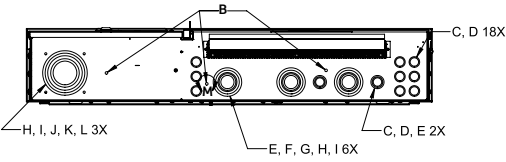
# Dimensional Drawing

Meter-Main, Surface Mount, UG/OH Service Entrance, 12 space, 300 & 400 Ampere, Ringless with Lever Bypass and 5th Jaw

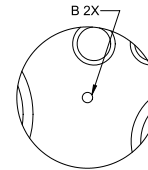


KNOCKOUT SIZE CHART

LABEL	SIZE(IN)
B	0.25
C	0.5
D	0.75
E	1.00
F	1.25
G	1.5
H	2
I	2.5
J	3
K	3.5
L	4



DETAIL M  
SCALE 1 : 1



DETAIL N  
SCALE 1 : 2



**Cat. No. LJ315-BED**

## Meter-Load Center Combination, All-in-one, Surface Mount, UG Service Entrance, EUSERC

### Features

- NEMA 3R
- Meets EUSERC (Electric Utility Service Equipment Requirements Committee) requirements
- UL listed
- 22kA Interrupt Rating
- In Compliance with Standards UL 50, UL 50E, UL 67
- PAS4-C2395 61 Gray TGIC Powder Coating, Recognized by UL, File Number MH26239

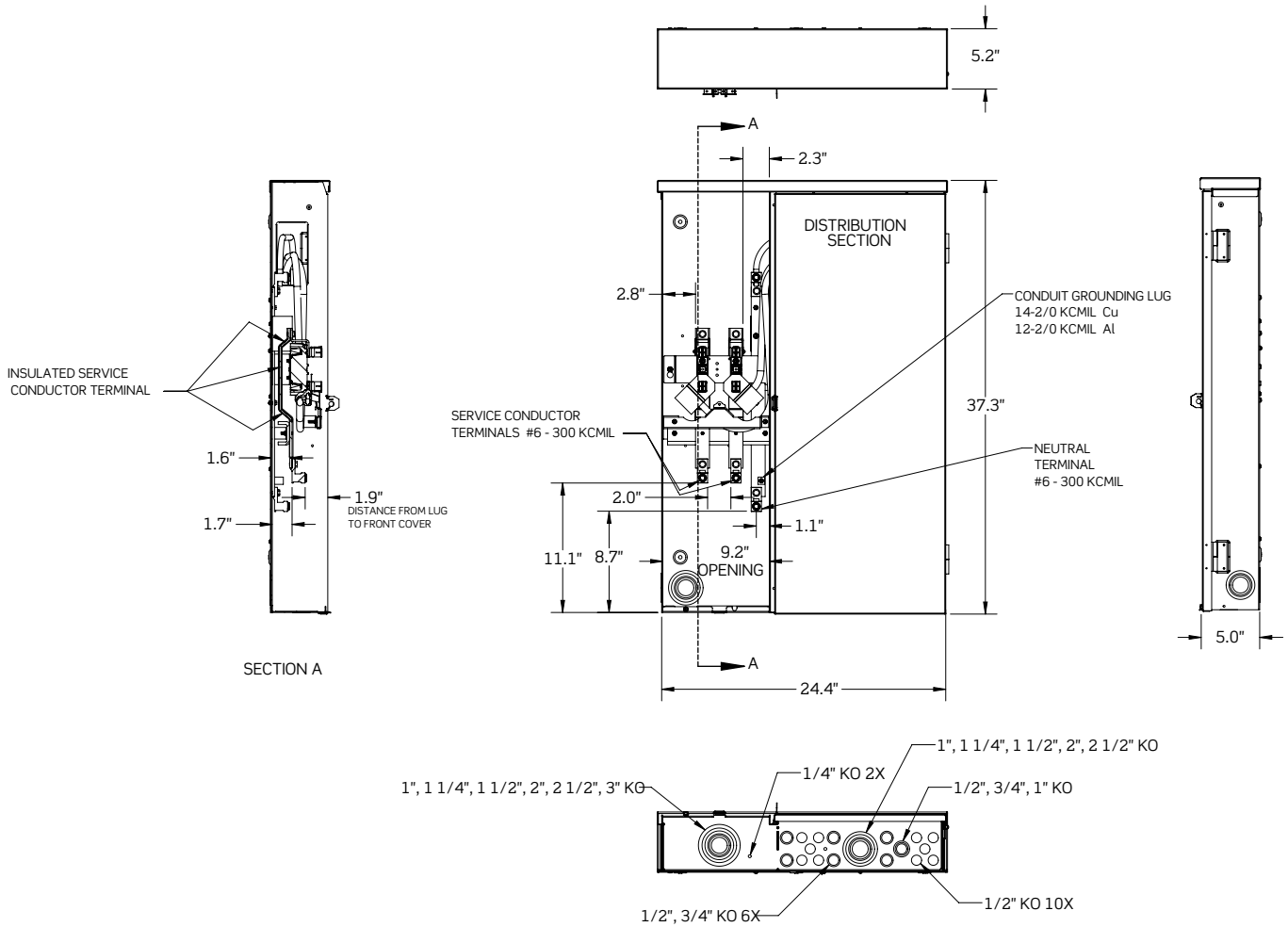
### Meter-Load Center Combination, All-in-one, Surface mount, UG Service Entrance, EUSERC

Amp Rating	# of Spaces	Catalog Number	Bypass	Cover
100	30	LJ310-BED	None	Ring Type
125	30	LJ312-BED	None	Ring Type
150	30	LJ315-BED	None	Ring Type
200	30	LJ320-BED	None	Ring Type
200	42	LJ420-BED	None	Ring Type
225	42	LJ422-BED	None	Ring Type



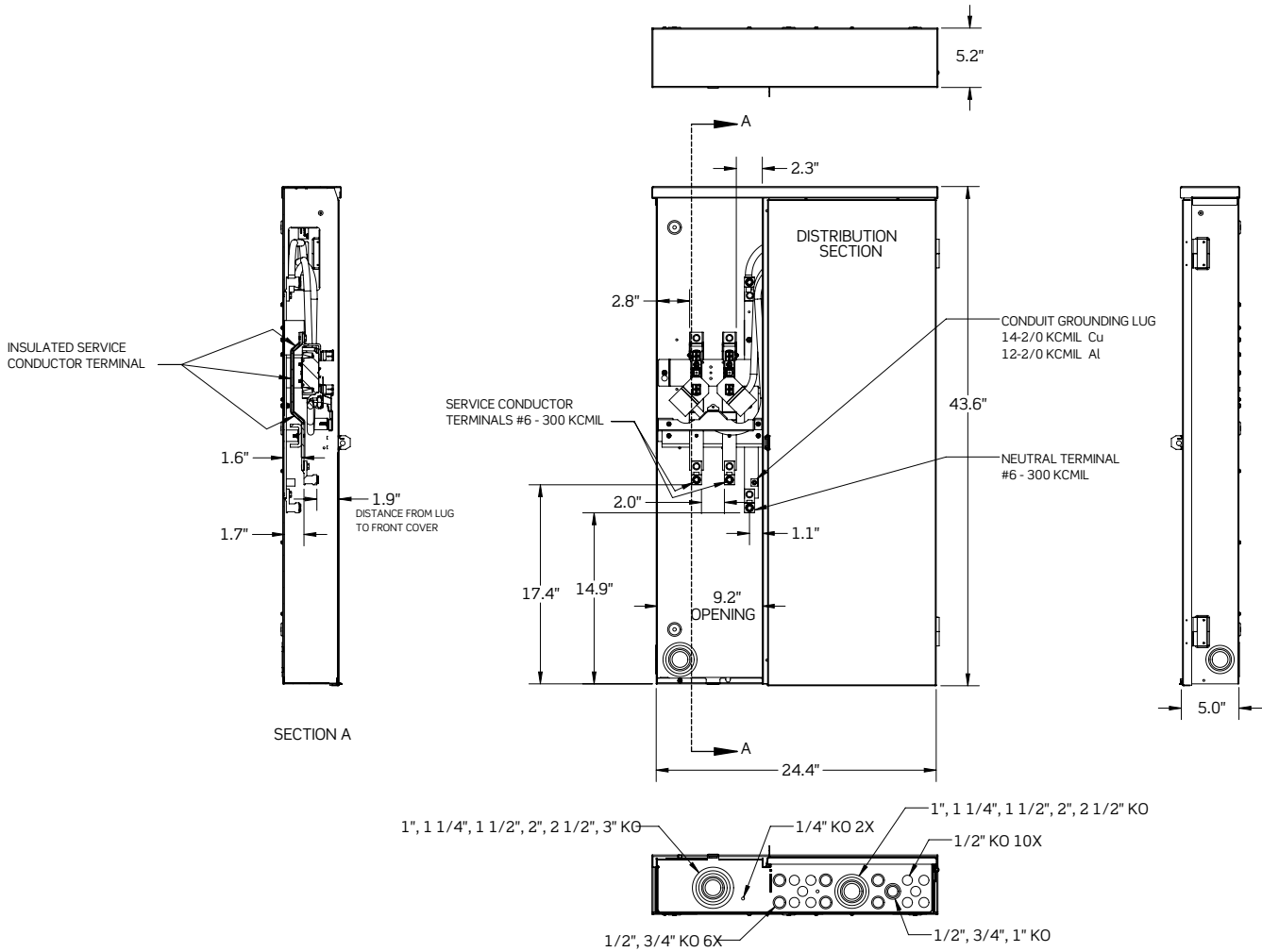
# Dimensional Drawing

Meter-Load Center Combination, All-In-One, Surface Mount, UG Service Entrance, 30 space  
100, 125, 150 & 200 Ampere, 4 Jaws, Ring Type



## Dimensional Drawing

Meter-Load Center Combination, All-In-One, Surface Mount, UG Service Entrance, 42 Space  
200 & 225 Ampere, 4 Jaws, Ring Type





**Cat. No. LG420-BED**



**Cat. No. LG320-BED**



**Cat. No. LG120-BED**

# Meter-Load Center Combination, All-In-One, Semi-Flush Mount, UG/OH\* Service Entrance, EUSERC

## Features and Benefits

- NEMA 3R
- Meets EUSUERC (Electric Utility Service Equipment Requirements Committee) requirements
- UL listed
- California Title 24, Section 110.10 compliant design
- 22kA Interrupt Rating

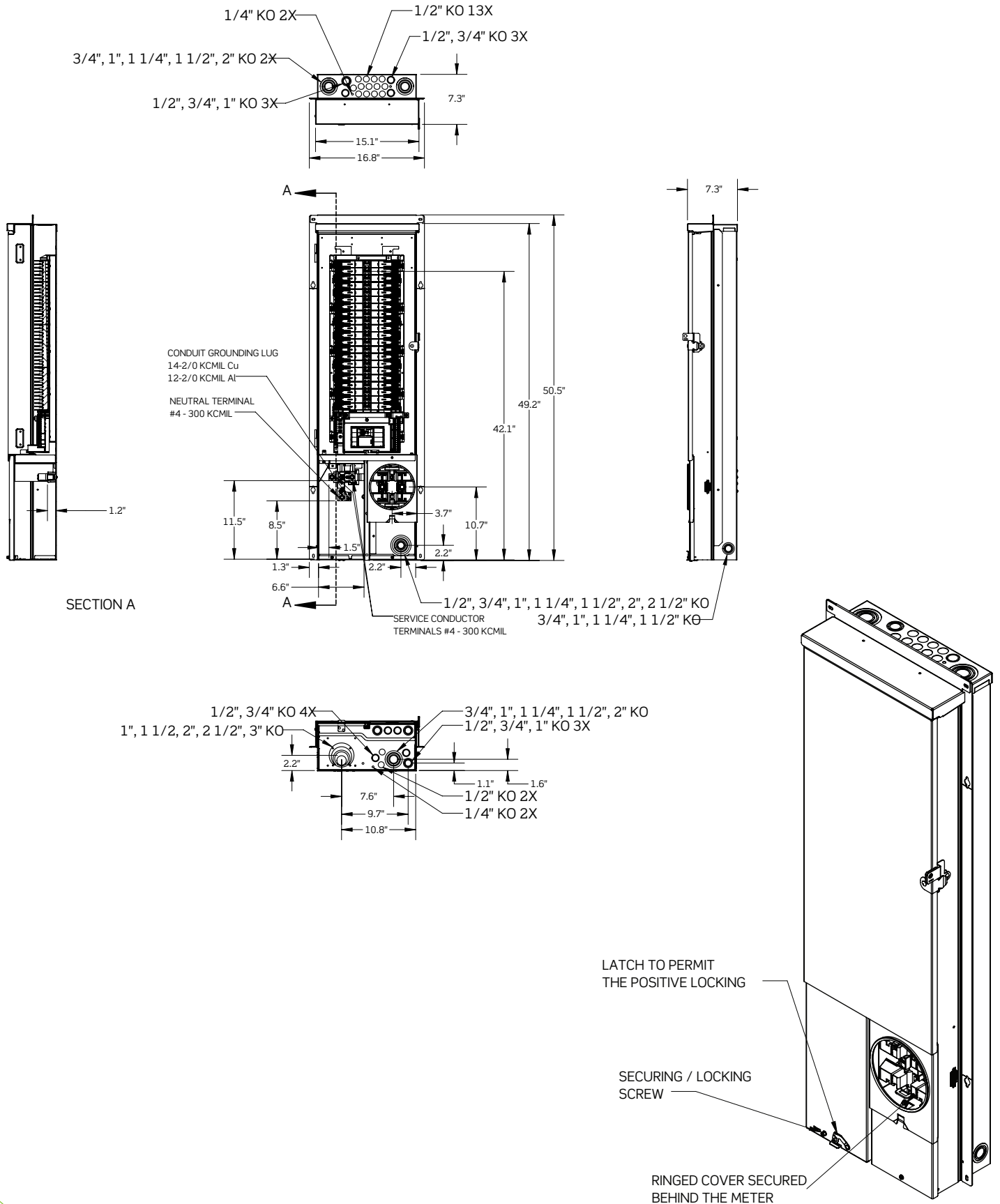
## Meter-Load Center Combination, All-in-one, Semi-flush mount, UG/OH\* Service Entrance, EUSERC

Amp Rating	# Spaces/ circuits	Catalog Number	Bypass	Cover
<b>Main Breaker Factory Installed</b>				
100	10	LG110-BED	None	Ring Type
125	12	LG112-BED	None	Ring Type
200	12	LG120-BED	None	Ring Type
100	10	LG310-BED	None	Ring Type
125	30	LG312-BED	None	Ring Type
200	30	LG320-BED	None	Ring Type
200	40	LG420-BED	None	Ring Type
225	40	LG422-BED	None	Ring Type
<b>Main Lugs Only</b>				
225	12	LG122-LED	None	Ring Type

\* Overhead feed requires Overhead Tunnel Kit accessory

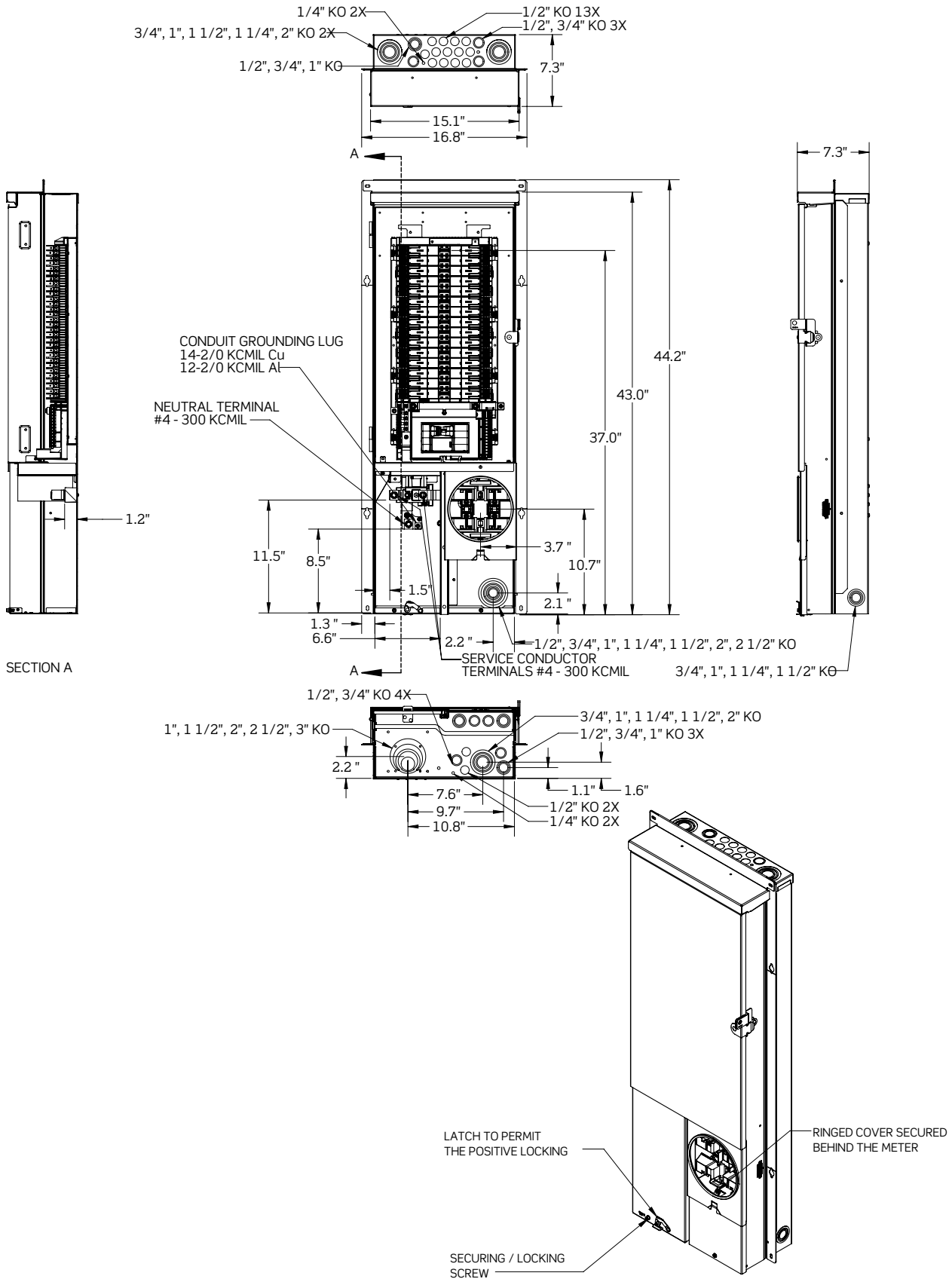
## Dimensional Drawing

Meter-Load Center Combination, All-in-One, Semi-Flush Mount, UG/OH Service Entrance, 40 Space  
200 & 225 Ampere, 4 Jaws, Ring Type



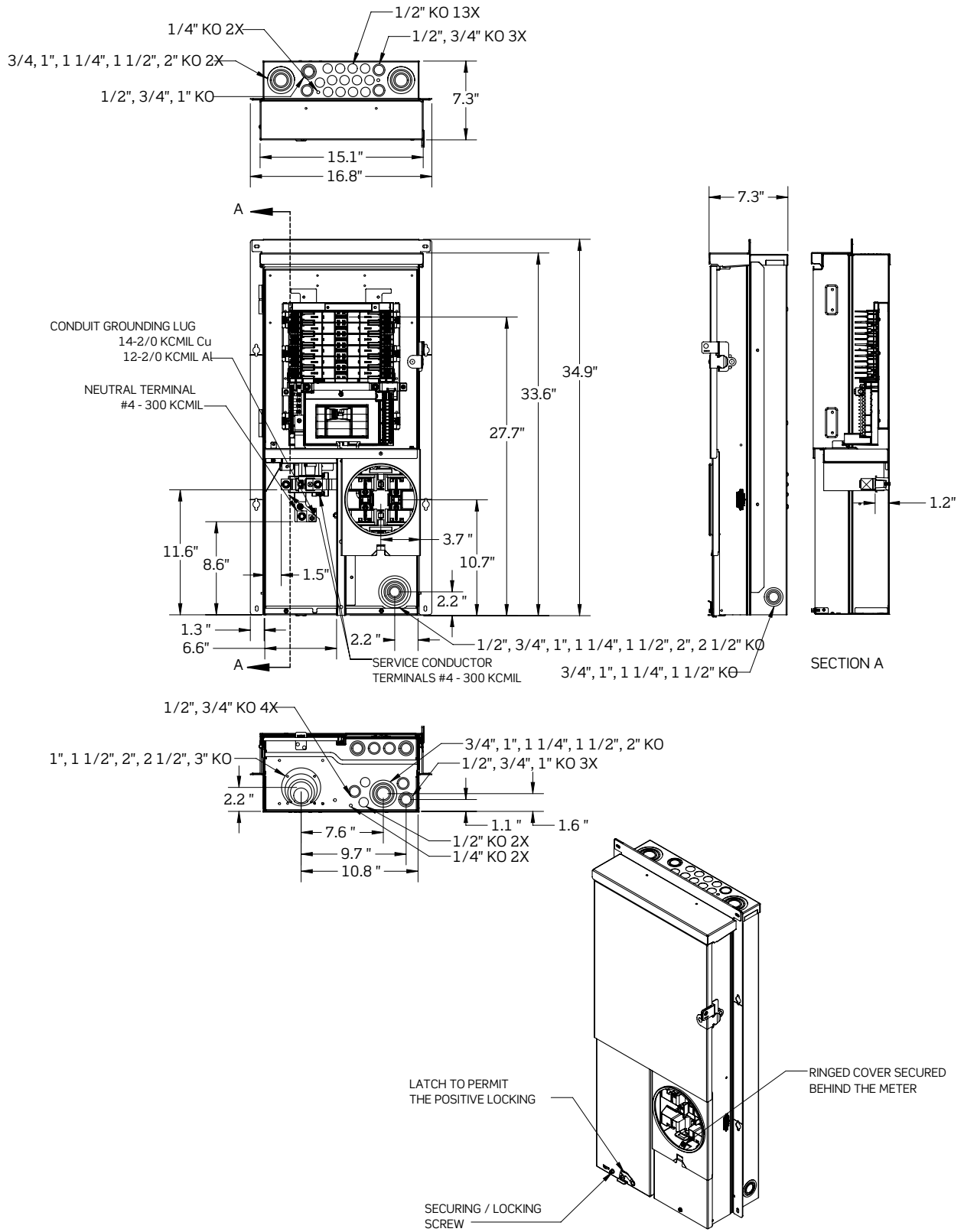
# Dimensional Drawing

Meter-Load Center Combination, All-in-One, Semi-Flush Mount,  
UG/OH Service Entrance, 30 Space  
100, 125 & 200 Ampere, 4 Jaws, Ring Type



## Dimensional Drawing

### Meter-Load Center Combination, All-in-One, Semi-Flush Mount, UG/OH Service Entrance, 12 Space 100, 125 & 200 Ampere, 4 Jaws, Ring Type



## MAIN CIRCUIT BREAKERS 120/240 VAC, 22kA short-circuit rating



### MAIN BREAKERS

Amp Rating	Catalog Number
100	LM100-T
125	LM125-T
150	LM150-T
175	LM175-T
200	LM200-T
225	LM225-T



### MB CONVERSION KIT FOR SEMI-FLUSH MOUNT METER-LOAD CENTER COMBINATIONS

AMP RATING	CATALOG NUMBER
100	LMB10-T
125	LMB12-T
150	LMB15-T
175	LMB17-T
200	LMB20-T
225	LMB22-T

## BRANCH CIRCUIT BREAKERS 10kA short-circuit rating\*

### STANDARD

AMP RATING	1-POLE 120V	2-POLE 120/208V 120/240V
15	LB115-T	LB215-T
20	LB120-T	LB220-T
25	LB125-T	LB225-T
30	LB130-T	LB230-T
35	-	LB235-T
40	-	LB240-T
45	-	LB245-T
50	-	LB250-T
60	-	LB260-T
70	-	LB270
80	-	LB280
90	-	LB290
100	-	LB200
110	-	LB211
125	-	LB212



### AFCI

AMP RATING	1-POLE 120V	2-POLE 120V/240V
15	LB115-AFT	LB215-AF
20	LB120-AFT	LB220-AF

### AFCI/GFCI - DUAL FUNCTION

AMP RATING	1-POLE 120V
15	LB115-DFT
20	LB120-DFT

### SURGE PROTECTION

DESCRIPTION	CATALOG NUMBER
15A Surge Protective Device and Circuit Breaker 120/240V	LSPD1-T
20A Surge Protective Device and Circuit Breaker 120/240V	LSPD2-T

### GFCI - 5 MA GROUND-FAULT PROTECTION OF PERSONNEL

AMP RATING	1-POLE 120V	2-POLE 120/208V 120/240V
15	LB115-GFT	LB215-G
20	LB120-GFT	LB220-G
25	LB125-GFT	LB225-G
30	LB130-GFT	LB230-G
40	-	LB240-G
50	-	LB250-G
60	-	LB260-G

### GFPE - 30 MA GROUND-FAULT PROTECTION OF EQUIPMENT

AMP RATING	1-POLE 120V	2-POLE 120V/240V
15	LB115-EPT	LB215-EP
20	LB120-EPT	LB220-E
25	LB125-EPT	LB225-EP
30	LB130-EPT	LB230-EP
40	-	LB240-EP
50	-	LB250-EP
60	-	LB260-EP

\*Series Rated 22kA with Leviton Main Breaker; see Series Ratings Tables for additional Ratings

## 2ND GEN SMART CIRCUIT BREAKERS WITH REMOTE CONTROL FUNCTIONALITY 10KA SHORT-CIRCUIT RATING

### 2ND GEN SMART STANDARD

AMP RATING	1-POLE 120V	2-POLE 120/208V 120/240V
15	LB115-ST	LB215-ST
20	LB120-ST	LB220-ST
25	LB125-ST	LB225-ST
30	LB130-ST	LB230-ST
35	-	LB235-ST
40	-	LB240-ST
45	-	LB245-ST
50	-	LB250-ST
60	-	LB260-ST

### 2ND GEN SMART AFCI

AMP RATING	1-POLE 120V
15	LB115-AST
20	LB120-AST

### 2ND GEN SMART AFCI/GFCI - DUAL FUNCTION

AMP RATING	1-POLE 120V
15	LB115-DST
20	LB120-DST

### 2ND GEN SMART GFCI - 5 MA GROUND-FAULT PROTECTION OF PERSONNEL

AMP RATING	1-POLE 120V	2-POLE 120/208V 120/240V
15	LB115-GST	LB215-GST
20	LB120-GST	LB220-GST
25	LB125-GST	LB225-GST
30	LB130-GST	LB230-GST
35	-	LB235-GST
40	-	LB240-GST
45	-	LB245-GST
50	-	LB250-GST
60	-	LB260-GST

### 2ND GEN SMART GFPE - 30 MA GROUND-FAULT PROTECTION OF EQUIPMENT

AMP RATING	1-POLE 120V	2-POLE 120/208V 120/240V
15	LB115-EST	LB215-EST
20	LB120-EST	LB220-EST
25	LB125-EST	LB225-EST
30	LB130-EST	LB230-EST
40	-	LB240-EST
50	-	LB250-EST



CATALOG NUMBER	DESCRIPTION
LWHEM-2	Leviton Whole Home Energy Monitor with 1 pair of Current Transformer
LSMMA	Leviton Smart Mains Metering Accessory

\*Additional LSMMA's may be purchased to monitor up to 3 total energy sources.



\*Series Rated 22kA with Leviton Main Breaker; see Series Ratings Tables for additional Ratings

## ACCESSORIES



### LOCKING & LATCHING DEVICES

DESCRIPTION	CATALOG NUMBER
Handle padlock device for branch circuit breakers	LBHPL
Handle padlock device for main circuit breakers	LMHPL
Door locking latch kit for indoor load centers	LDRLK
Door latch kit without lock for indoor load centers	LDRLA



### LUGS, GROUND AND NEUTRAL BAR KITS

DESCRIPTION	CATALOG NUMBER
Field-installable main lugs, 3 - 300	LL630
Ground lug, 6 - 2/0	LLGND
Neutral lug, 6 - 300	LLNLT
Phase/neutral load side lug, 14 - 4 (qty. 6)	LLPHN
Ground bar kit, 11 positions, 14 - 4	LGBKT
Neutral bar kit, 14 - 1/0	LNBKT
Neutral lug, 4 - 2/0	LL420
Field-installable Neutral Feed-Through Lug, 3 - 300	LN330
Feed through lug accessory	LFTLA



### OUTDOOR & METER COMBINATION LOAD CENTER ACCESSORIES

DESCRIPTION	CATALOG NUMBER
Conduit hub, 1"	LHUB1
Conduit hub, 2"	LHB02
Conduit hub, 2 1/2"	LHUB2
Closing plate	LCLPT
5th Jaw for standard meter sockets	L5JAW
5th Jaw with neutral for lever bypass meter socket	L5JAW-N
Ground connector	LGDMC
Sealing ring	LRING



### MISCELLANEOUS

DESCRIPTION	CATALOG NUMBER
Manual transfer interlock kit	LITLK
Breaker Hold Down kit	LBHDK
Angle iron bracket for flush mount load centers	LBRKT
20sp Standard Door Circuit Identification Sticker (qty. 5)	LSTK2
30sp Standard Door Circuit Identification Sticker (qty. 5)	LSTK3
42sp Standard Door Circuit Identification Sticker (qty. 5)	LSTK4
66sp Standard Door Circuit Identification Sticker (qty. 5)	LSTK6
20sp Window Door Circuit Identification Sticker (qty. 5)	LSTK2-W
30sp Window Door Circuit Identification Sticker (qty. 5)	LSTK3-W
42sp Window Door Circuit Identification Sticker (qty. 5)	LSTK4-W
66sp Window Door Circuit Identification Sticker (qty. 5)	LSTK6-W
Filler Plates (qty. 10)	LFPLT
Terminal covers for main circuit breaker	LTCVR
Bonding strap kit	LPBSK
Cover screw kit (qty. 6)	LDCSK
GFCI-protected outlet labels, pack of 1000	GFLBL-LBL
EMERGENCY DISCONNECT labels, pack of 10	LDSCl



# LEVITON LOAD CENTER CROSS-REFERENCE

## LOAD CENTERS

NEMA 1 - INDOOR WITH MAIN BREAKER	
CURRENT CAT. NO.	NEW CAT. NO.
LP210-MB	LP210-BPD
LP212-MB	LP212-BPD
LP215-MB	LP215-BPD
LP220-MB	LP220-BPD
LP310-MB	LP310-BPD
LP312-MB	LP312-BPD
LP315-MB	LP315-BPD
LP320-MB	LP320-BPD
LP415-MB	LP415-BPD
LP420-MB	LP420-BPD
LP422-MB	LP422-BPD
LP620-MB	LP620-BPD
LP622-MB	LP622-BPD

NEMA 1 - INDOOR WITH MAIN LUGS	
CURRENT CAT. NO.	NEW CAT. NO.
LP212-ML	LP222-LPD
LP320-ML	LP322-LPD
LP422-ML	LP422-LPD
LP622-1L	LP622-LPD

NEMA 3R - OUTDOOR WITH MAIN BREAKER	
CURRENT CAT. NO.	NEW CAT. NO.
LP210-3B	LR210-BDD
LP212-3B	LR212-BDD
LP215-3B	LR215-BDD
LP220-3B	LR220-BDD
LP312-3B	LR312-BDD
LP315-3B	LR315-BDD
LP320-3B	LR320-BDD
LP415-3B	LR415-BDD
LP420-3B	LR420-BDD
LP422-3B	LR422-BDD

NEMA 3R - OUTDOOR WITH MAIN LUGS	
CURRENT CAT. NO.	NEW CAT. NO.
LP212-3L	LR222-LDD
LP320-3L	LR322-LDD
LP422-3L	LR422-LDD

NEMA 3R - SURFACE MOUNT METER MAIN WITH MAIN BREAKER	
CURRENT CAT. NO.	NEW CAT. NO.
LP815-TMC	LS815-BTD
LP820-TMC	LS820-BTD
LP815-HMC	LS815-BHD
LP820-HMC	LS820-BHD
LP815-LMC	LS815-BLD
LP820-LMC	LS820-BLD
LP815-5MC	LS815-B5D
LP820-5MC	LS820-B5D
LP815-RMC	LS815-BRD
LP820-RMC	LS820-BRD

NEMA 3R - SURFACE MOUNT ALL-IN-ONE WITH MAIN BREAKER	
CURRENT CAT. NO.	NEW CAT. NO.
LP310-MC	LJ310-BED
LP312-MC	LJ312-BED
LP315-MC	LJ315-BED
LP320-MC	LJ320-BED
LP420-MC	LJ420-BED
LP422-MC	LJ422-BED

NEMA 3R - SEMI FLUSH MOUNT ALL-IN-ONE WITH MAIN BREAKER	
CURRENT CAT. NO.	NEW CAT. NO.
N/A	LG110-BED
LP112-SR	LG112-BED
LP120-SR	LG120-BED
N/A	LG310-BED
LP312-SR	LG312-BED
LP320-SR	LG320-BED
LP420-SR	LG420-BED
LP422-SR	LG422-BED

NEMA 3R - SEMI-FLUSH MOUNT ALL-IN-ONE WITH MAIN LUGS	
CURRENT CAT. NO.	NEW CAT. NO.
LP120-SRL	LG122-LED

## MAIN BREAKERS

MAIN BREAKERS	
CURRENT CAT. NO.	NEW CAT. NO.
LM100	LM100-T
LM125	LM125-T
LM150	LM150-T
N/A	LM175-T
LM200	LM200-T
LM225	LM225-T

MAIN BREAKER CONVERSION KIT FOR SEMI-FLUSH ALL-IN-ONE LOAD CENTERS	
CURRENT CAT. NO.	NEW CAT. NO.
LMB10	LMB10-T
LMB12	LMB12-T
LMB15	LMB15-T
N/A	LMB17-T
LMB20	LMB20-T
LMB22	LMB22-T

### Class 320 Meter Main, UG/OH Service Entrance with Distribution Section and Feed-Through Lugs

Amp Rating	# of Spaces/Circuits	Catalog Number	Bypass	Cover
300	12	LS130-S5D*	Lever	Ringless
400	12	LS140-S5D*	Lever	Ringless

\*LS130-S5D comes with (1) 150A main circuit breaker factory installed and LS140-S5D comes with (1) 200A main circuit breaker factory installed feeding 12-space distribution section with feed-through lugs  
 \*Secondary main circuit breaker sold separately



**Leviton Manufacturing Co., Inc.**

Tech Line: 1-800-824-3005

Mon-Fri 8am-10pm EST, Saturday 9am-7pm EST, Sunday 9am-5pm EST

For 24/7 product support visit [www.leviton.com/support](http://www.leviton.com/support)

**Visit our Website at: [www.leviton.com/loadcenter](http://www.leviton.com/loadcenter)**

© 2024 Leviton Manufacturing Co., Inc. All rights reserved.  
All trademarks are the property of their respective owners.

