

## Outdoor Disconnect Enclosure

Cat. Nos. LR020, LR022

**IMPORTANT SAFETY INSTRUCTIONS - READ ALL INSTRUCTIONS BEFORE USING.**

PK-A3519-10-00-5C

## WARNINGS

- **TO AVOID FIRE, SHOCK, OR DEATH: TURN OFF POWER THAT IS SUPPLYING THIS EQUIPMENT AND CONFIRM POWER IS OFF** before installing, removing, or servicing this equipment.
- This equipment **MUST BE** installed and serviced by an electrician.
- To be installed and/or used in accordance with electrical codes and regulations.
- Use **ONLY** approved fittings and clamps to avoid damage to wires.
- Leviton circuit breakers **MUST BE** used with a Leviton circuit breaker enclosure.
- Before providing power to the load center, check all electrical connections and confirm that the wiring is correct.
- Replace all doors and covers before connecting power to this equipment.
- **SAVE THESE INSTRUCTIONS.**

## LIMITED PRODUCT WARRANTY

For Leviton's limited product warranty, go to [www.leviton.com](http://www.leviton.com). For a printed copy of the warranty, you may call 1-800-323-8920. Patents covering this product, if any, can be found on [Leviton.com/patents](http://Leviton.com/patents)

## INSTALLATION

**WARNING: TO AVOID FIRE, SHOCK, OR DEATH, TURN OFF POWER THAT IS SUPPLYING THIS EQUIPMENT AND CONFIRM POWER IS OFF** before installing, removing, or servicing this equipment.

**Step 1: (Optional) Remove Enclosure Cover (A).** (See Figure 1.)

**NOTE:** Remove the load center door for an easier installation.

- a. Remove the two **Cover Screws (B)** securing the cover to the enclosure's top cap.
- b. Push up the **Securing Latch (C)**.
- c. Slide the **Enclosure Cover (A)** down and out.

**Step 2: Remove Deadfront (E). (See Figure 2.)**

- a. Remove **Deadfront (E)** by loosening the **Deadfront Screws (F)** and lifting the **Deadfront (E)** off the enclosure.

### Step 3: (Optional) Bottom/Side feed applications.

**NOTES:**

- Before removing any knockouts from the enclosure, consult local electrical codes to determine the knockout requirements.
- Prior to installation, consult local code requirements regarding service and load conductors not crossing one another.
- a. To remove **Knockout (G)**, use a screwdriver to strike the center of the knockout. (See Figure 4.)
- b. Pry each **Ring (H)** up, one at a time, and grip both ends with a pair of pliers. (See Figure 4.)
- c. Use pliers to bend the **Rings (H)** until they disconnect from the enclosure. (See Figure 4.)

**Step 4: Mount enclosure. (See Figure 5.)**

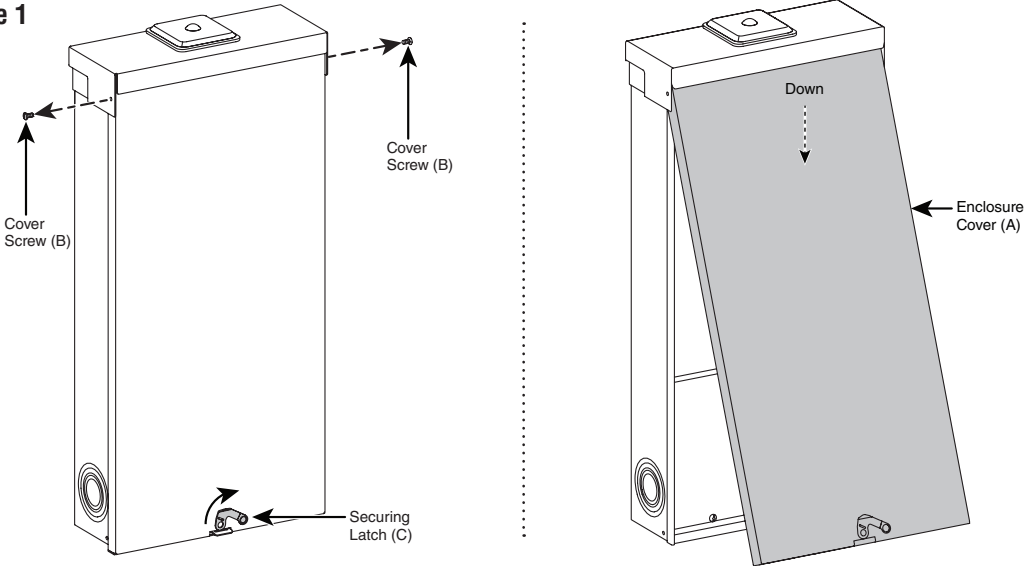
- a. Remove **Mounting Knockouts (I)** from the back of the enclosure.
- b. Use outdoor-approved screws or nails (not provided) in the mounting knockout holes to secure the enclosure to the wall.

**Step 5: Main breaker installation (For LR022-LDD type outdoor disconnects). (See Figure 6.)**

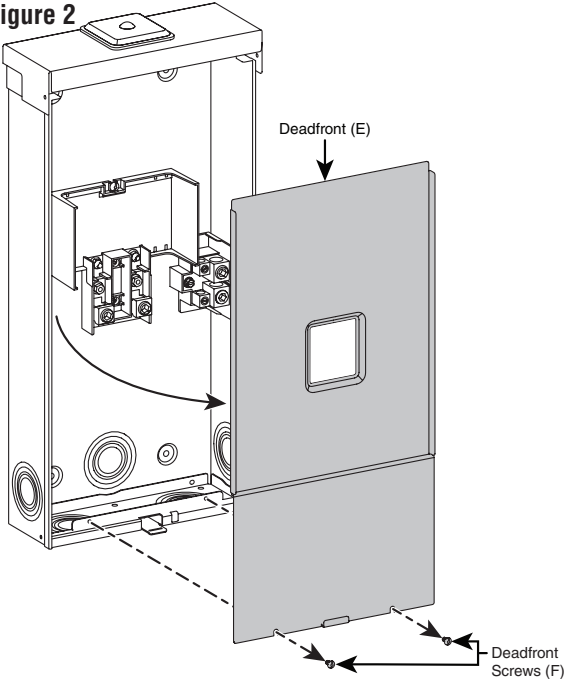
**NOTE:** If installing LR020-BDD (includes main breaker factory installed) proceed to Step 6.

- a. Remove and retain the two **Mounting Nuts (J)** from the main breaker **Mounting Studs (K)**.
- b. Slide **Terminal Covers (L)** off the main breaker and remove the **Terminal Knockouts (M)**.
- c. Place main breaker into enclosure with **Mounting Tab (N)** under **Mounting Flange (O)** and the **Bus Connections (P)** over the breaker **Mounting Studs (K)**.
- d. Install previously removed **Mounting Nuts (J)** and torque to 60 in-lb.

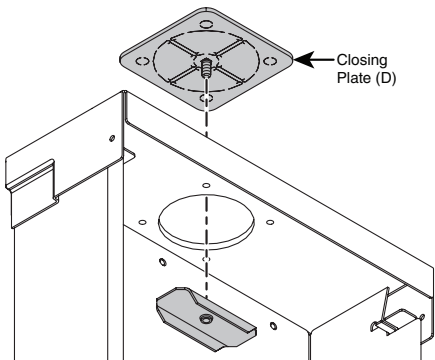
### Figure 1



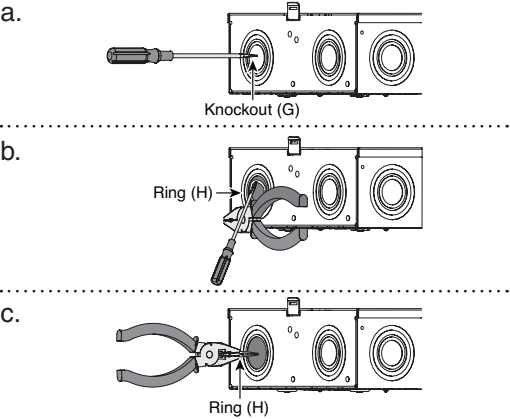
### Figure 2



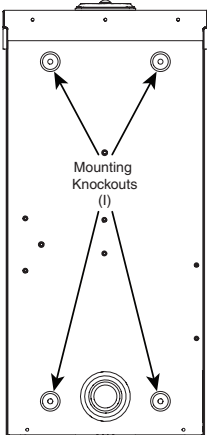
### Figure 3



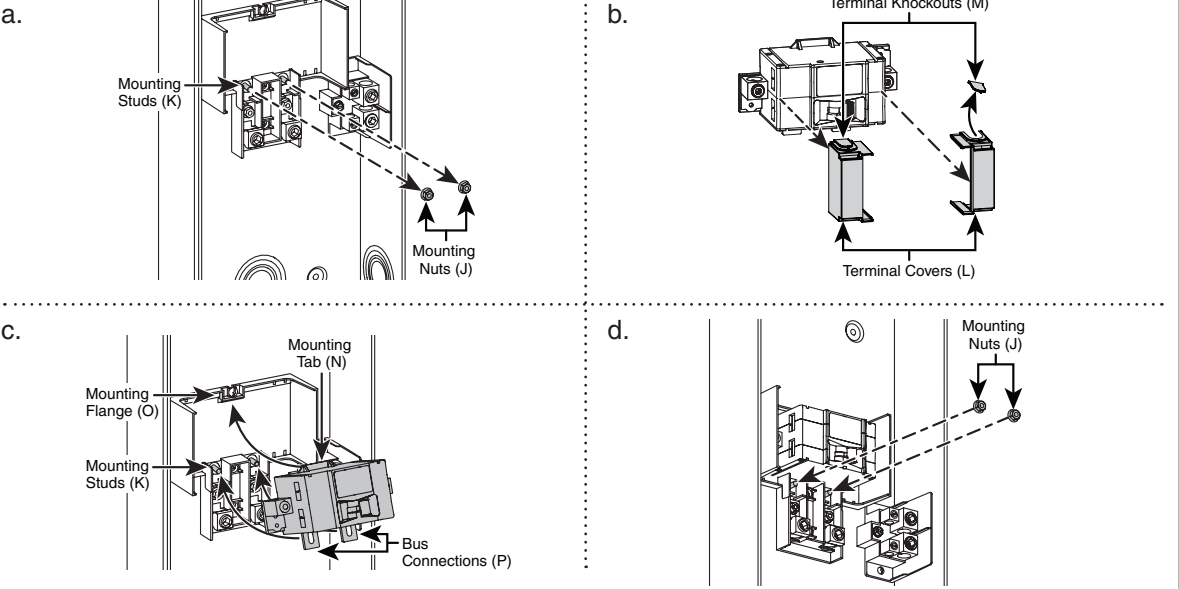
### Figure 4



### Figure 5



### Figure 6



Step 6: Connect phase, neutral, and ground conductors.

**WARNING:** Use **ONLY** approved fittings and clamps to avoid damage to wires.

NOTES:

- When installing this enclosure as the service entrance, the **Green Bonding Screw (Q)** (included in accessory bag) **MUST BE INSTALLED** in the appropriate terminal and torqued to 40-in-lb.
  - When installing this enclosure in an application other than the service entrance, **DO NOT** install the **Green Bonding Screw (Q)**. The **Earth Ground (U)** must be wired to the **Equipment Ground Bar (X)**.
- a. If feeding wires from the top, remove the **Closing Plate (D)** from the top of the enclosure. (See Figure 3.)
- b. Bring the **Service Phase (R)**, **Service Neutral (S)**, and **Ground(s)** conductors into the enclosure through the overhead conduit opening or bottom-feed knockout. (See Figure 7.)
- c. Connect the **Service Phase (R)**, **Service Neutral (S)**, **Service Conduit Ground (T)** and **Earth Ground (U)** conductors to the appropriate terminals and torque to spec in the terminations table. (See Figure 7.)
- d. Install the two **Terminal Covers (L)** over the phase connections. (See Figure 7.)

Step 7: Feed-Thru conductors. (See Figure 8.)

- a. Bring the **Feed-Thru Phase (V)**, **Feed-Thru Neutral (W)**, and **Equipment Ground (X)** conductors into the enclosure through the bottom feed knockout.
- b. Connect the **Feed-Thru Phase (V)** , **Feed-Thru Neutral W)**, and **Equipment Ground (X)** conductors to the appropriate terminals and torque to spec in the terminations table.

Step 8: Install Deadfront (E) and Enclosure Cover (A). (See Figure 9.)

- a. Install **Deadfront (E)** by sliding it into the **Slots (Y)** on the main housing at a 45° angle, then slide the bottom inward until it sits flush against the enclosure.
- b. Secure the **Deadfront (E)** with the **Deadfront Screws (F)**.
- c. If the **Enclosure Cover (A)** was removed during installation, reinstall by sliding the cover upward at a 45° angle until the mounting holes are aligned on the side of the enclosure's top cap, then rotate the cover down and close the **Securing Latch (C)** to hold the cover in place. Use the **Cover Screws (B)** to secure the cover to the enclosure.

Step 9: Apply applicable Emergency Disconnect and Service Disconnect labels.

- a. When installing this enclosure as the service entrance, apply the **EMERGENCY DISCONNECT, SERVICE DISCONNECT** label to the front of the enclosure cover, and apply the **SERVICE DISCONNECT** label to the deadfront near the main breaker handle.
- b. When installing this enclosure in an application other than the service entrance, apply the **EMERGENCY DISCONNECT** label to the front of the enclosure cover.

Step 10: Complete installation.

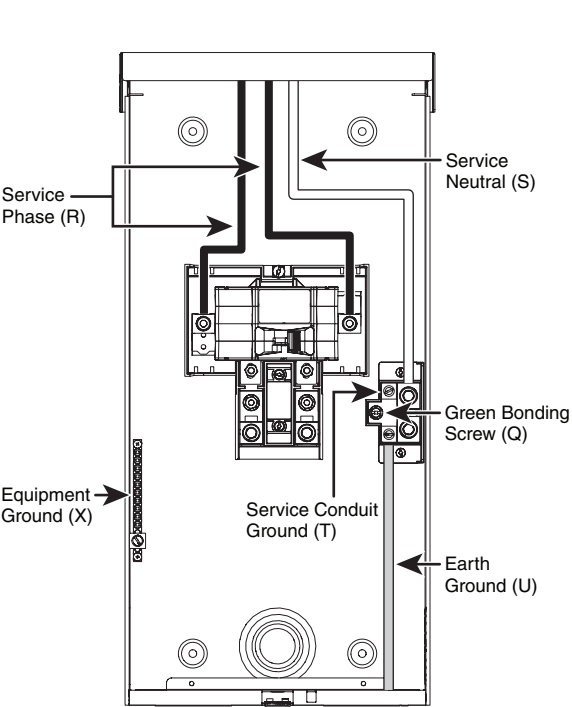
WARNINGS:

- Before providing power to the outdoor disonnect and downstream load centers, check all electrical connections and confirm that the wiring is correct.
  - Replace all doors and covers before energizing this equipment.
- a. Ensure that the main breaker in the outdoor disconnect, and branch circuit breakers in any downstream load center are in the OFF position.
- b. To energize, first turn ON the main breaker in the outdoor disconnect, and then turn ON each individual branch circuit breaker in downstream load centers.

Terminations				
Termination Point	Wire Material	Wire (AWG/MCM)	Strip Length	Torque
Main Breaker - Phase Lugs	Copper/ Aluminum	#3 AWG - 300 MCM	1 in.	250 in-lb
Service Neutral Lug	Copper/ Aluminum	#4 AWG - 300 MCM	1.5 in.	275 in-lb
Service Conduit Ground Lug	Copper/ Aluminum	#8 AWG - 2/0, Stranded	0.75 in.	50 in-lb
	Copper	#14 AWG - #10 AWG, Solid or Stranded		
Earth Ground Lug	Copper/ Aluminum	#8 AWG - 2/0, Stranded	0.75 in.	50 in-lb
	Copper	#14 AWG - #10 AWG, Solid or Stranded		
Feed-Thru Phase Lugs	Copper/ Aluminum	#3 AWG - 300 MCM	1 in.	375 in-lb
Feed-Thru Neutral Lug	Copper/ Aluminum	#4 AWG - 300 MCM	1.5 in.	275 in-lb
Equipment Ground Bar Lug	Copper/ Aluminum	#4 AWG - 2/0 AWG	0.75 in.	50 in-lb
Equipment Ground Bar Terminals	Copper/ Aluminum	(1) #6 AWG - #4 AWG, Stranded	0.5 in.	35 in-lb
		(1) #8 AWG, Stranded		25 in-lb
		(1) #14 AWG - #10 AWG, Solid or Stranded		20 in-lb
	Copper	(2) #14 AWG - #10 AWG, Solid or Stranded		25 in-lb
		(1) #14 AWG and (1) #12 AWG, Solid		25 in-lb
		(1) #14 AWG and (1) #10 AWG, Solid or Stranded		25 in-lb
		(1) #12 AWG and (1) #10 AWG, Solid		25 in-lb
	Aluminum	(2) #12 AWG and (1) #10 AWG, Solid		20 in-lb
		(1) #12 AWG and (1) #10 AWG, Solid		20 in-lb

Figure 7

Wires coming in from top:



Wires coming in from bottom:

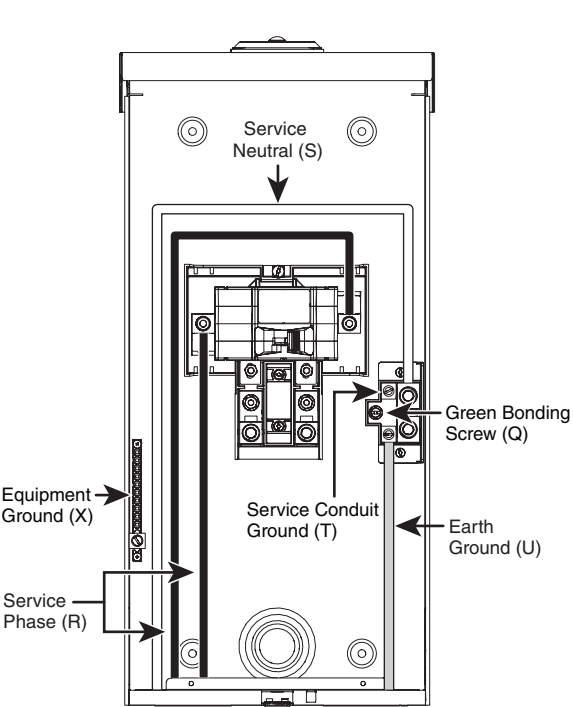


Figure 8

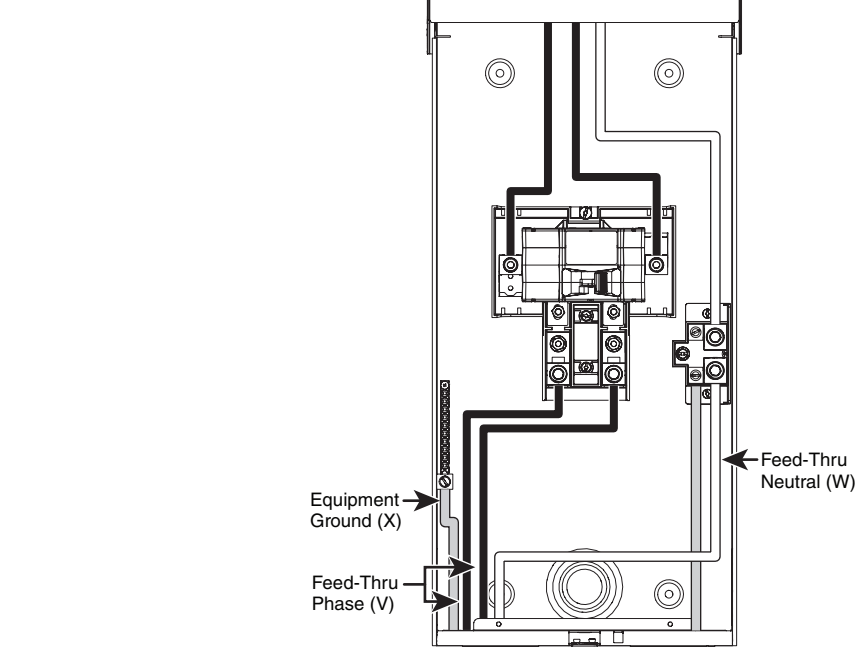
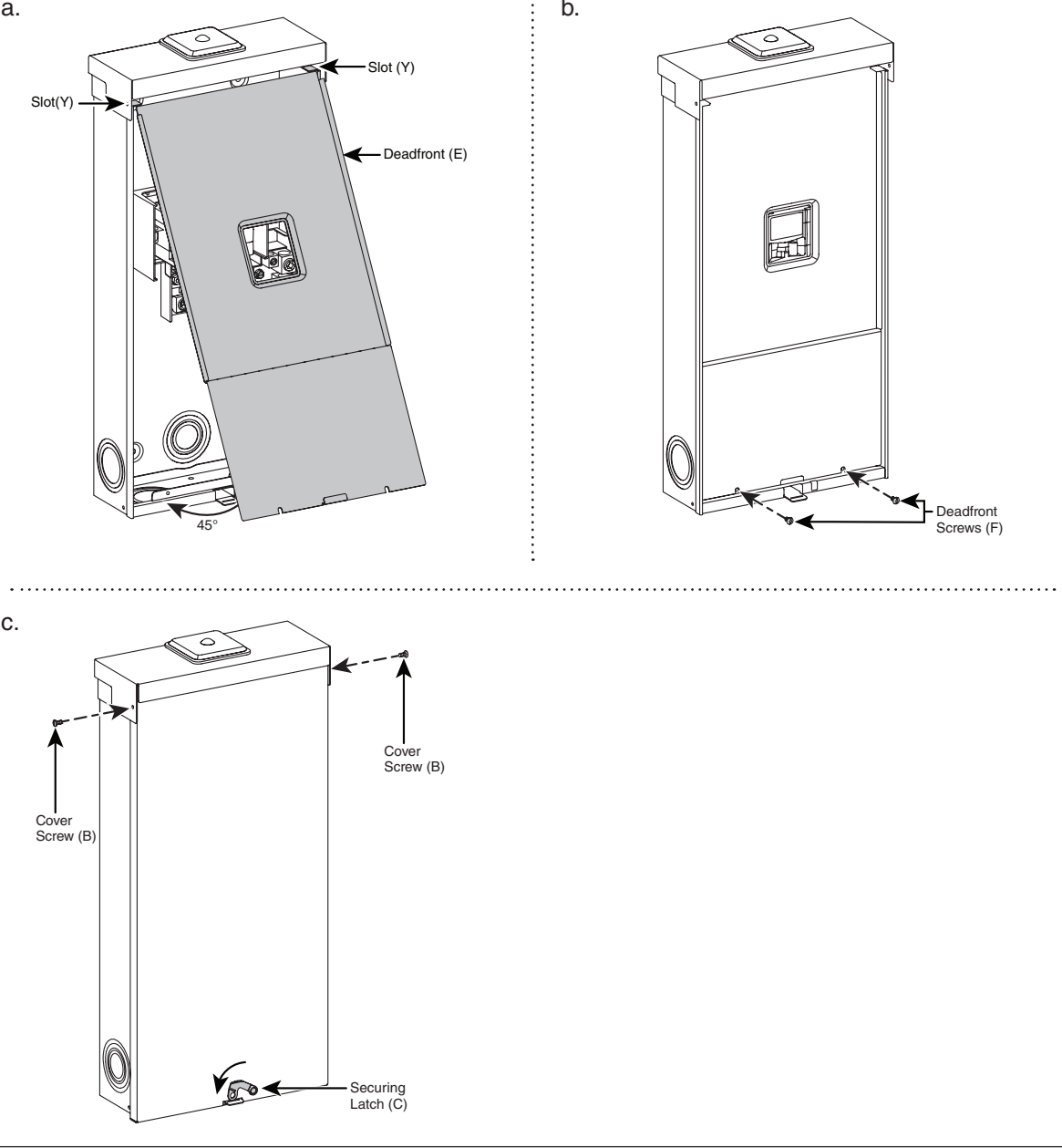


Figure 9



# ARTWORK PRINT SPECIFICATIONS

**LEVITON**®

**PART NUMBER** PK-A3519-10-00-5C **REV** **DESCRIPTION** Instruction Sheet

\* Artwork must be printed at 100% (1:1 scale)

## Material Specifications: North America Suppliers

- \* **Thickness:** 0.0040 / 0.0038 in.
- \* **Material:** 20lb Bond / 50lb Offset Paper
- \* **Recycled Content:** N/A
- \* **Exterior Brightness:** 95 / 89-92%
- \* **Finish:** N/A / Smooth or Vellum

## Material Specifications: Asia Suppliers

- \* **Thickness:** 75 / 68 um
- \* **Material:** 55G / 60G Offset Paper
- \* **Recycled Content:** N/A
- \* **Exterior Brightness:** 90%
- \* **Finish:** N/A

\* For manuals - designates cover specifications

## Color:

**No. of Color(s):** 1 over 1

- 1: Black ☒ Spot
- 2: \_\_\_\_\_ ☐ CMYK
- 3: \_\_\_\_\_
- 4: \_\_\_\_\_

## Fonts:

- 1: Helvetica LT Std
- 2: \_\_\_\_\_
- 3: \_\_\_\_\_
- 4: \_\_\_\_\_

## Die Line Key:

- · — · — Perforate      — Die Cut      - - - - - Fold Line
- · — · — Kiss Cut      · · · · · Cellophane      ||||| Glue

## MANUAL INTERIORS / BINDERY / FOLD SCHEME :

**Body Material:** \_\_\_\_\_

**Thickness:** \_\_\_\_\_

### Bindery

- ☐ Die cut      ☒ Fold      ☐ Saddle Stitch
- ☐ Perfect Bind      ☐ Drill      ☐ Trim

**No. of Color(s):** \_\_\_\_\_ over \_\_\_\_\_

- 1: \_\_\_\_\_ ☐ Spot
- 2: \_\_\_\_\_ ☐ CMYK
- 3: \_\_\_\_\_
- 4: \_\_\_\_\_

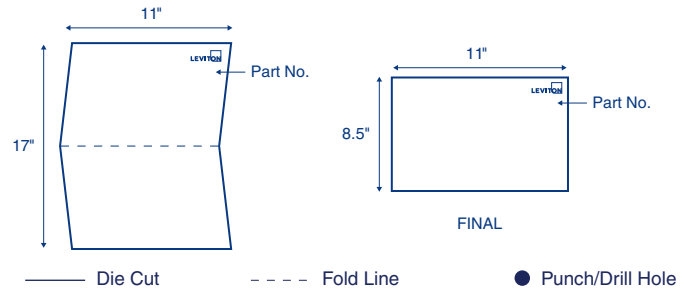
## Fonts:

- 1: \_\_\_\_\_
- 2: \_\_\_\_\_
- 3: \_\_\_\_\_
- 4: \_\_\_\_\_

## PROCESS :

- ☒ Offset      ☐ Flexo
- ☐ Other \_\_\_\_\_
- Line Screen:** \_\_\_\_\_
- Angle:** \_\_\_\_\_
- Resolution:** \_\_\_\_\_

## DIMENSIONS / FOLD SCHEME / BINDERY DIAGRAM



## COMMENTS :

The information in this document is the exclusive PROPRIETARY property of LEVITON MANUFACTURING COMPANY, INC. It is disclosed with the understanding that acceptance or review by the recipient constitutes an undertaking by the recipient. (1) to hold this information in strict confidence, and (2) not to disclose, duplicate, copy, modify or use the information for any purpose other than that for which disclosed.

## FOR LEVITON USE ONLY

- Approvals:** ☒ **Plant** 90 H. Cai cc: J. Tang      ☒ **QA** A. Filho      ☒ **PM** P. Pearl cc: A. Mattei
- ☐ **Mktg** \_\_\_\_\_      ☒ **Eng** K. Orellana      ☒ **S & A** B. Grande
- ☒ **Supp** Nikhil Diwakar, Managing Director nikhil@jaynix.com      ☐ **Other** \_\_\_\_\_      ☐ **Other** \_\_\_\_\_

**PN-ARN:** ECR31145-8060

**ECR Number:** ECR31145

**Pilot Rev:** \_\_\_\_\_

**Artist:** D. Valastin

**Released Artwork Format:** Production PDF

**Artwork Release Date:** 1/28/25

**Notes:** \_\_\_\_\_

- ☐ Vector Photo      ☐ Color Corrected Photo