

Single Pole (One location) or 3-Way (Multi-location) Incandescent Touch Dimmer

120VAC, 60Hz
Cat. No. TT106-1, 600W
Cat. No. TT110-1, 1000W

For use w/ Cat. No. TT00R-1 True Touch™ Remote
INSTALLATION INSTRUCTIONS

WARNINGS AND CAUTIONS:

- To be installed and/or used in accordance with appropriate electrical codes and regulations.
- If you are unsure about any part of these instructions, consult a qualified electrician.
- To avoid overheating and possible damage to this device and other equipment, do not install to control a receptacle, fluorescent lighting, a motor- or a transformer-operated appliance.
- Total minimum wattage must exceed 40W.

WARNINGS AND CAUTIONS:

- Use only one (1) dimmer per load. For remote operation, use Leviton Remote, Cat. No. TT00R-1. Do not use a 3-way switch.
- Use with incandescent or 120V halogen fixtures only.
- Disconnect power at circuit breaker or fuse when servicing fixture.
- Use this device only with copper or copper clad wire. With aluminum wire use only devices marked CO/ALR or CU/AL.

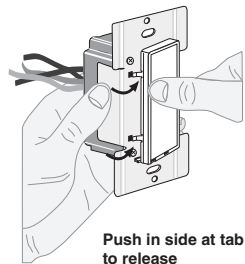
Tools needed to install your Dimmer:

Slotted/Philips Screwdriver Electrical Tape
Pliers Pencil
Cutters Ruler

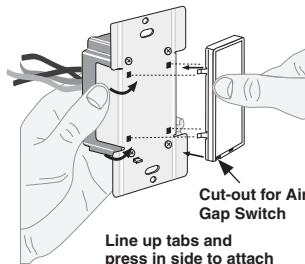
Changing the color of your Dimmer:

Your Dimmer includes two color options. The Dimmer ships with the White frame attached. To change color of frame, proceed as follows:

NOTE: Ensure cut-out for Air-Gap Switch is positioned on bottom.



Push in side at tab to release



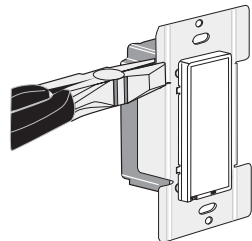
Line up tabs and press in side to attach

Installing Dimmer by itself or with other devices:

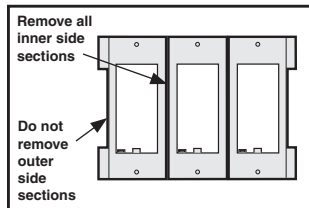
If installing Dimmer in a single device application, proceed with the **INSTALLING YOUR DIMMER** section. If installing Dimmer in a multi-device application, proceed as follows:

MULTI-DEVICE APPLICATION:

NOTE: You only need to remove side sections if installing with other dimmers or if it does not fit in wall box – not when installing with mechanical switches.



Bend back and forth to remove side section



Remove all inner side sections
Do not remove outer side sections

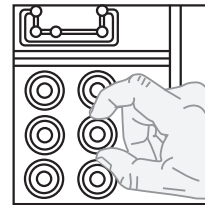
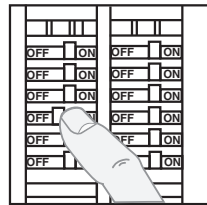
When installing more than one dimmer in the same location, the side sections of the mounting strap must be removed. Use pliers to carefully bend side sections back and forth until they break off. The side sections dissipate heat, so removing them requires a derating of the dimmer's capacity (**refer to chart**).

MAXIMUM LOAD PER DIMMER FOR MULTI-DEVICE			
Cat. No.	Single	Two Devices	More than 2 Devices
TT106-1	600W	500W	400W
TT110-1	1000W	800W	700W

INSTALLING YOUR DIMMER

NOTE: Use check boxes when Steps are completed.

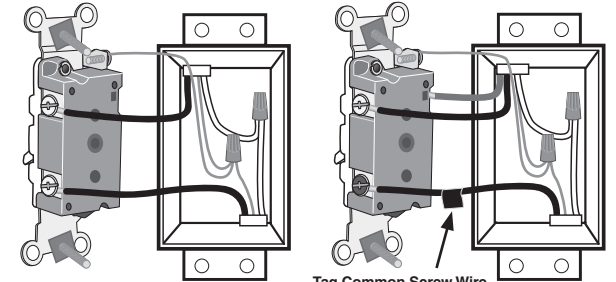
Step 1 **WARNING:** To avoid fire, shock, or death; **TURN OFF POWER** at circuit breaker or fuse and test that power is off before wiring!



Step 2 **Removing existing switch:** Remove existing wallplate and switch mounting screws. Carefully pull switch from wall box. **DO NOT** remove wires attached to the switch at this time.

Step 3 **Identifying your wiring application (most common):**
NOTE: If the wiring in the wall box does not resemble any of these configurations, consult a qualified electrician.

Step 3 con't



Tag Common Screw Wire (screw is usually black and/or marked "common")

Single-Pole:

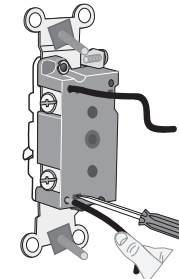
Look at the back of your switch. If there are 2 wires connected to two screw terminals (not including a green or bare copper wire used for grounding), you have a Single-Pole switch.

3-Way:

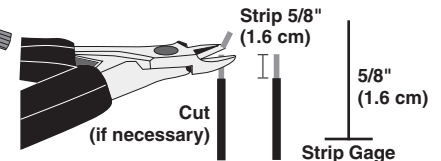
Look at the back of your switch. If there are 3 wires connected to three screw terminals (not including a green or bare copper wire used for grounding), you have a 3-Way switch. **DO NOT** add a single-pole switch in this location.

Step 4 Disconnecting switch wires and preparing wires:

- Disconnect wires from screw terminals or Quickwire™ slots (shown).
- Pull off pre-cut insulation from Dimmer leads.
- Make sure that the ends of the wires from the wall box are **straight (cut if necessary)**.
- Remove 5/8" (1.6 cm) of insulation from each wire in the wall box (shown).
- For Single-Pole Application, go to Step 5a.**
- For 3-Way Application, go to Step 5b.**



Press in slot and pull out wire

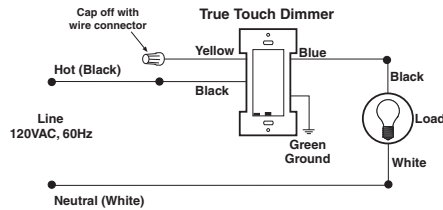
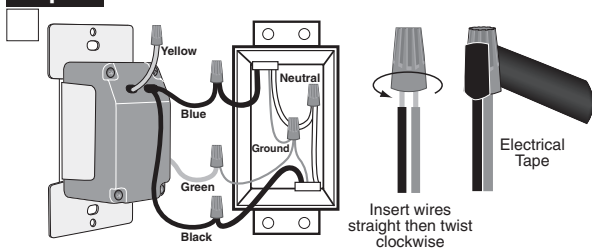


Strip 5/8" (1.6 cm)

5/8" (1.6 cm)

Strip Gage

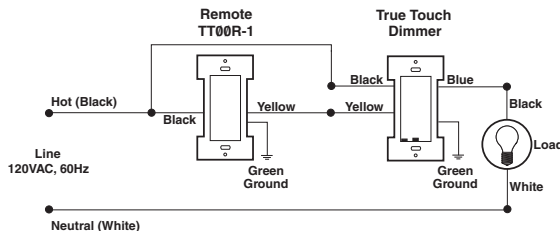
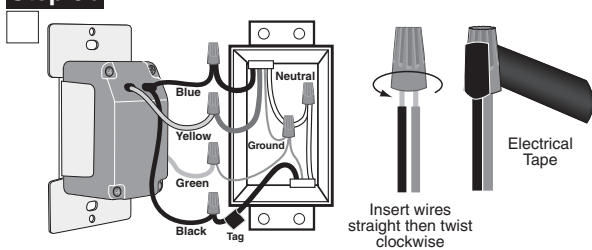
Step 5a Single-Pole Wiring Application:



Connect wires per WIRING DIAGRAM as follows:

- Screw wire nuts on clockwise making sure no bare conductors show below the wire connectors. Secure each connector with electrical tape.
- Green dimmer Ground lead to Green or bare copper wire in wall box.
 - Black dimmer lead to Line (Hot) wall box wire removed from old switch.
 - Blue dimmer lead to remaining wall box wire (Load).
 - Cap Yellow dimmer lead with appropriate size wire nut.
 - Proceed to Step 6.

Step 5b 3-Way Wiring Application:

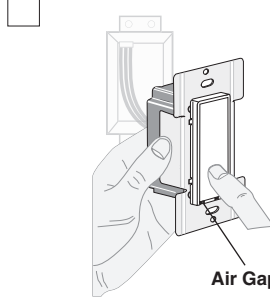


Step 5b con't

Connect wires per WIRING DIAGRAM as follows:

- Screw wire nuts on clockwise making sure no bare conductors show below the wire connectors. Secure each connector with electrical tape.
- Green dimmer Ground lead to Green or bare copper wire in wall box.
 - Black dimmer lead to tagged Line (Hot) wall box wire identified when removing old switch.
 - Blue dimmer lead to Load wall box wire.
 - Yellow dimmer lead to remaining wall box wire.

Step 6 Testing your Dimmer prior to mounting in wall box:

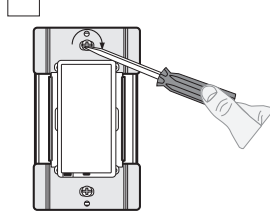


- Restore power at circuit breaker or fuse.
- Ensure that the Air Gap Switch is pushed in fully.
- Carefully holding Dimmer as shown, turn Dimmer ON by pressing touch plate. Lights should turn ON.

If lights do not turn ON, refer to the TROUBLESHOOTING section.

Step 7 Dimmer Mounting:

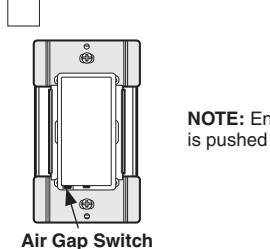
TURN OFF POWER AT CIRCUIT BREAKER OR FUSE.



Installation may now be completed by carefully positioning all wires to provide room in wall box for dimmer. Mount dimmer into box with mounting screws supplied. Attach wallplate.

Step 8

Restore Power: Restore power at circuit breaker or fuse. Installation is complete.



NOTE: Ensure that the Air Gap Switch is pushed in fully.

OPERATION

NOTE: The Green indicator light will illuminate when the Load is OFF to facilitate access in the dark.

NOTE: If using the dimmer in a 3-way application, the lights will turn ON at brightness set on dimmer's touch plate. The lighting can be controlled from either the dimmer or the remote location.

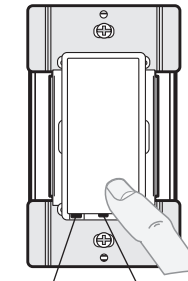
ON: Tap the touch plate of the dimmer. The lights will fade ON at the brightness level last used (LED OFF).

OFF: Tap the touch plate of the dimmer. The lights will fade OFF (LED ON).

BRIGHTEN & DIM: Press and hold the touch plate of the dimmer to the desired light level. Each time the touch plate is touched, the state of the dimmer toggles between BRIGHT and DIM.

AIR GAP SWITCH: On the lower left corner of the switch plate, there is an Air Gap Switch. When servicing light fixture, pull lever out (OFF position). This will cut the power to the fixture. After servicing is complete, push the lever all the way in (ON position) to restore power.

CLEANING: To clean touch plate, wipe it with a clean damp cloth using clean water only, dry thoroughly.



Air Gap Switch Indicator Light

TROUBLESHOOTING

- Lights Flickering
 - Lamp has a bad connection.
 - Wires not secured firmly with wire connectors.
 - Lamp power is less than the 40W.
- Light does not turn ON and ON/OFF LED does not turn ON
 - Circuit breaker or fuse has tripped.
 - Lamp is burned out.
 - Lamp Neutral connection is not wired.
 - Air gap switch is open.
- Dimmer does not operate
 - Dimmer BLACK wire miswired to lamp and Dimmer BLUE wire miswired to LINE Hot. Reverse BLACK and BLUE wires.

NOTE: If further information is needed in identifying the HOT wire in a 3-Way application, go to Leviton's website at www.leviton.com.

For non-standard wiring applications, refer to Wire Nut and Connector Size Chart

WIRE CONNECTOR / # OF COND. COMBINATION CHART

1- #12 w/ 1 to 3 #14, #16 or #18
2- #12 w/ 1 or 2 #16 or #18
1- #14 w/ 1 to 4 #16 or #18
2- #14 w/ 1 to 3 #16 or #18

LIMITED 5 YEAR WARRANTY AND EXCLUSIONS

Leviton warrants to the original consumer purchaser and not for the benefit of anyone else that this product at the time of its sale by Leviton is free of defects in materials and workmanship under normal and proper use for five years from the purchase date. Leviton's only obligation is to correct such defects by repair or replacement, at its option, if within such five year period the product is returned prepaid, with proof of purchase date, and a description of the problem to **Leviton Manufacturing Co., Inc., Att: Quality Assurance Department, 59-25 Little Neck Parkway, Little Neck, New York 11362-2591**. This warranty excludes and there is disclaimed liability for labor for removal of this product or reinstallation. This warranty is void if this product is installed improperly or in an improper environment, overloaded, misused, opened, abused, or altered in any manner, or is not used under normal operating conditions or not in accordance with any labels or instructions. There are no other or implied warranties of any kind, including merchantability and fitness for a particular purpose, but if any implied warranty is required by the applicable jurisdiction, the duration of any such implied warranty, including merchantability and fitness for a particular purpose, is limited to five years. Leviton is not liable for incidental, indirect, special, or consequential damages, including without limitation, damage to, or loss of use of, any equipment, lost sales or profits or delay or failure to perform this warranty obligation. The remedies provided herein are the exclusive remedies under this warranty, whether based on contract, tort or otherwise.