

WARNINGS AND CAUTIONS:

- **TO AVOID FIRE, SHOCK, OR DEATH: TURN OFF POWER** at circuit breaker or fuse and test that power is off before wiring or servicing fixture!
- **TO AVOID FIRE, SHOCK, OR DEATH:** use only with the appropriate Advance Transformer 120/277V Mark 10® Powerline electronic ballasts for controlling the specific fluorescent lamps.
- To be installed and/or used in accordance with appropriate electrical codes and regulations.
- If you are unsure about any part of these instructions, consult an electrician.
- Use this device **with copper or copper clad wire only**.

WARNINGS AND CAUTIONS:

- When retrofitting dimming ballasts into fixtures that originally had Instant Start ballasts, the sockets **MUST** be replaced with Rapid Start sockets to allow proper dimmer operation and prevent damage to the dimming ballast. Refer to the instructions provided with the ballast.
- Use only one (1) dimmer in a 3 or 4-way circuit. The switch(es) will turn the light on at the brightness level selected at the dimmer.
- To avoid overheating and possible damage to this device and other equipment, **DO NOT** install to control a receptacle, a motor or a transformer-operated appliance, or any other lighting sources than those specified.

Tools needed to install your Dimmer

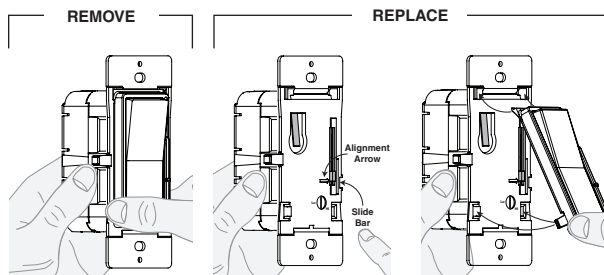
Slotted/Philips Screwdriver
Pliers

Electrical Tape
Pencil

Ruler
Cutters

Changing the color of your Dimmer

If a color change kit is provided with your device, proceed with the following step before wiring the device if you need to change the color. Otherwise, proceed with the "Installing Dimmer by itself or with other devices" section.



Press the side of the color kit at either bottom tab and pull forward to release.

Align slide bar with alignment arrow as shown. Move the slide bar of the color kit to the bottom.

Insert top tabs of the color kit into the slots on the top of the dimmer. Then press the bottom of the color kit in until it snaps into place.

Installing Dimmer by itself or with other devices

DE-RATING:

De-rating is required for the Cat. No. DSX06-1 ONLY. When mounting two devices together de-rate to 500VA, for more than two devices de-rate to 400VA.

MAXIMUM BULB WATTAGE:

Mark 10® Powerline dimmers are rated in Volt-Amps (VA). The maximum bulb wattage is determined by the efficiency of the Mark 10® Powerline ballast. The tables on the next page show the maximum number of ballasts that can be connected to a single dimmer for different Mark 10® Powerline ballasts.

MAXIMUM BULB WATTAGE AT 80% EFFICIENCY					
Cat. No.	Volts	Rating	Single	Two Devices	More than 2 Devices
DSX06-1	120V	600VA	480W	400W	320W
DSX10-1	120V	1000VA	800W	800W	800W
DSX06-7	277V	600VA	480W	480W	480W
DSX12-7	277V	1200VA	960W	960W	960W

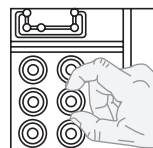
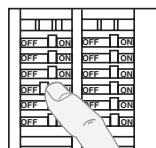
Installing your Dimmer

NOTE: Use check boxes ☒ when Steps are completed.

Step 1

☐

WARNING: TO AVOID FIRE, SHOCK, OR DEATH; TURN OFF POWER at circuit breaker or fuse and test that power is off before wiring or servicing fixture!

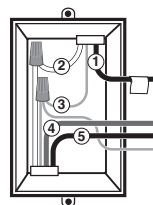
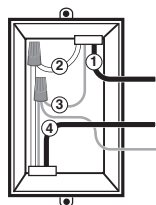


Step 2

☐

Identifying your wiring application (most common):

NOTE: If the wiring in the wall box does not resemble any of these configurations, consult an electrician.



Single Pole

1. Line (Hot)
2. Neutral
3. Ground
4. Load

3-Way

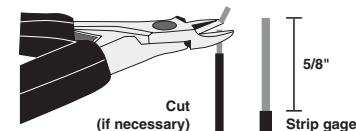
1. Line or Load (See note below)
2. Neutral
3. Ground
4. First Traveler – note color
5. Second Traveler – note color

NOTE: For 3-Way applications, note that one of the screw terminals from the old switch being removed will usually be a different color (Black) or labeled Common. Tag that wire with electrical tape and identify as the common (Line or Load) in both the dimmer wall box and 3-way wall box.

Step 3 Preparing and connecting wires:

☐

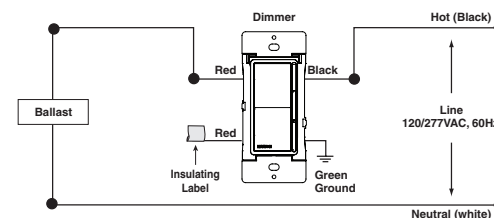
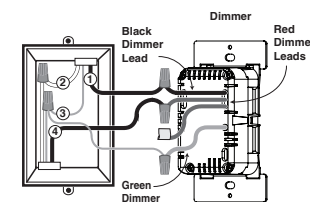
- Make sure that the ends of the wires from the wall box are straight (**cut if necessary**).
- Remove 5/8" (1.6 cm) of insulation from each wire in the wall box (shown).
- **For Single-Pole Application, go to Step 4a.**
- **For 3-Way Application, go to Step 4b.**



Step 4a

☐

Single-Pole Wiring Application:

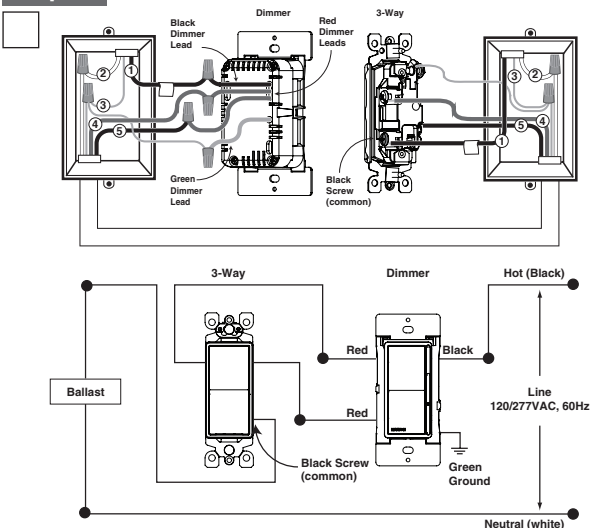


Connect wires per WIRING DIAGRAM as follows:

- Green or bare copper wall box wire to **GREEN** dimmer lead.
- Line Hot wall box wire to **BLACK** dimmer lead.
- Load wall box wire to **RED** dimmer lead.
- Remaining **RED** Dimmer lead should have a label affixed. **DO NOT REMOVE** this label in a single pole application. **NOTE:** If the insulating label is not affixed to the second **RED** lead use electrical tape or a wire connector to cover.

Proceed to Step 5.

Step 4b 3-Way Wiring Application:

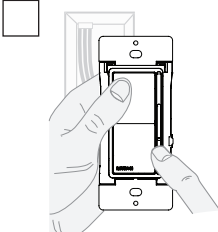


Connect wires per **WIRING DIAGRAM** as follows:

- Green or bare copper wall box wire to **GREEN** dimmer lead.
- Common (Line hot or Load) wire to **BLACK** dimmer lead.
- Remove insulating label and connect the first traveler wire to the **RED** dimmer lead.
- Connect the second traveler wire to the remaining **RED** dimmer lead.

Proceed to Step 5.

Step 5 Testing your Dimmer prior to mounting in the wall box:

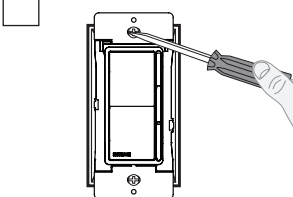


- Restore power at circuit breaker or fuse.
- Carefully holding dimmer, move slider control lever to highest position and press the top of the Decora® rocker. Lights should turn ON to brightest level.

If lights does not turn ON, refer to the **TROUBLESHOOTING** section.

Step 6 Dimmer Mounting:

TURN OFF POWER AT CIRCUIT BREAKER OR FUSE.



Installation may now be completed by carefully positioning all wires to provide room in wall box for dimmer. Mount dimmer into box with mounting screws supplied.

Attach wallplate.

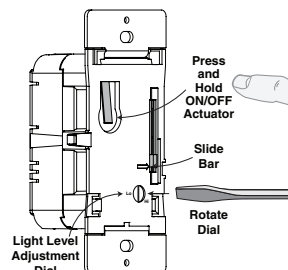
Step 7 Restore Power:

Restore power at circuit breaker or fuse.
Installation is complete.

Programming

Setting Minimum Light Level

1. Press bottom of Decora® rocker to turn the dimmer OFF and move the slide bar to the bottom.
2. Remove color kit (see Changing the color of your Dimmer section on page 1).
3. Press and hold the on/off actuator.
4. Rotate the light adjustment dial clockwise to increase the minimum light level or counter-clockwise to decrease the minimum light level.
5. Release the on/off actuator.
6. Replace color kit (see Changing the color of your Dimmer section on page 1).



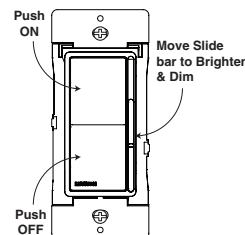
Operation

ON/OFF:

- Press top of Decora® rocker
 - Lights will turn ON.
- Press bottom of Decora® rocker
 - Lights will turn OFF.

BRIGHTEN & DIM:

- Move slide bar
 - Lights will BRIGHTEN or DIM.



Troubleshooting

- **Lights flickering**
 - Lamp has bad connection.
 - Wires not secured firmly with wire connectors.
- **Light does not turn ON**
 - Circuit breaker or fuse has tripped.
 - Lamp or ballast has burned out.
 - Lamp sockets are not Rapid Start type.
 - Lamp Neutral connection is not wired.

NOTE: If further information is needed in identifying the HOT wire in a 3-Way application, go to Leviton's website at www.leviton.com.

Mark 10 *Powerline* is a registered trademark of Advance Transformer Co.

For Technical Assistance Call: 1-800-824-3005 (U.S.A. Only) www.leviton.com

FOR CANADA ONLY

For warranty information and/or product returns, residents of Canada should contact Leviton in writing at Leviton Manufacturing of Canada Ltd to the attention of the Quality Assurance Department, 165 Hymus Blvd, Pointe-Claire (Quebec), Canada H9R 1E9 or by telephone at 1 800 405-5320.

Cat. No. DSX06-1, 120V, For use with Advance Transformer 120V Mark 10® Powerline Electronic Ballasts		
Advance Mark 10® Powerline Part No.	Lamp	Max. number of ballasts per dimmer
REZ-1T32	CFM26W/GX24Q	19
REZ-1T32	CFM32W/GX24Q	16
REZ-1T42	CFM42W/GX24Q	12
REZ-2Q26	CFQ26W/G24Q	10
REZ-132	F25T8	19
REZ-2S32	F25T8	10
REZ-3S32	F25T8	7
REZ-132	F32T8	17
REZ-2S32	F32T8	8
REZ-3S32	F32T8	6
REZ-1TTS40	FT40W/2G11	15
REZ-2TTS40	FT40W/2G11	7

Cat. No. DSX10-1, 120V, For use with Advance Transformer 120V Mark 10® Powerline Electronic Ballasts		
Advance Mark 10® Powerline Part No.	Lamp	Max. number of ballasts per dimmer
REZ-1T32	CFM26W/GX24Q	32
REZ-1T32	CFM32W/GX24Q	26
REZ-1T42	CFM42W/GX24Q	20
REZ-2Q26	CFQ26W/G24Q	17
REZ-132	F25T8	32
REZ-2S32	F25T8	17
REZ-3S32	F25T8	11
REZ-132	F32T8	28
REZ-2S32	F32T8	14
REZ-3S32	F32T8	9
REZ-1TTS40	FT40W/2G11	25
REZ-2TTS40	FT40W/2G11	12

Cat. No. DSX06-7, 277V, For use with Advance Transformer 277V Mark 10® Powerline Electronic Ballasts		
Advance Mark 10® Powerline Part No.	Lamp	Max. number of ballasts per dimmer
VEZ-1T32	CFM26W/GX24Q	20
VEZ-1T32	CFM32W/GX24Q	15
VEZ-1T42	CFM42W/GX24Q	12
VEZ-2Q26	CFQ26W/G24Q	10
VEZ-132	F25T8	20
VEZ-2S32	F25T8	10
VEZ-3S32	F25T8	7
VEZ-132	F32T8	17
VEZ-2S32	F32T8	8
VEZ-3S32	F32T8	6
VEZ-1TTS40	FT40W/2G11	14
VEZ-2TTS40	FT40W/2G11	7

Cat. No. DSX12-7, 277V, For use with Advance Transformer 277V Mark 10® Powerline Electronic Ballasts		
Advance Mark 10® Powerline Part No.	Lamp	Max. number of ballasts per dimmer
VEZ-1T32	CFM26W/GX24Q	39
VEZ-1T32	CFM32W/GX24Q	31
VEZ-1T42	CFM42W/GX24Q	24
VEZ-2Q26	CFQ26W/G24Q	21
VEZ-132	F25T8	39
VEZ-2S32	F25T8	20
VEZ-3S32	F25T8	14
VEZ-132	F32T8	33
VEZ-2S32	F32T8	17
VEZ-3S32	F32T8	11
VEZ-1TTS40	FT40W/2G11	29
VEZ-2TTS40	FT40W/2G11	14

© 2014 Leviton Mfg. Co., Inc

PK-A3036-10-00-2A-X3

LIMITED 5 YEAR WARRANTY AND EXCLUSIONS

Leviton warrants to the original consumer purchaser and not for the benefit of anyone else that this product at the time of its sale by Leviton is free of defects in materials and workmanship under normal and proper use for five years from the purchase date. Leviton's only obligation is to correct such defects by repair or replacement, at its option. For details visit www.leviton.com or call 1-800-824-3005. This warranty excludes and there is disclaimed liability for labor for removal of this product or reinstallation. This warranty is void if this product is installed improperly or in an improper environment, overloaded, misused, opened, abused, or altered in any manner, or is not used under normal operating conditions or not in accordance with any labels or instructions. There are no other or implied warranties of any kind, including merchantability and fitness for a particular purpose, but if any implied warranty is required by the applicable jurisdiction, the duration of any such implied warranty, including merchantability and fitness for a particular purpose, is limited to five years. Leviton is not liable for incidental, indirect, special, or consequential damages, including without limitation, damage to, or loss of use of, any equipment, lost sales or profits or delay or failure to perform this warranty obligation. The remedies provided herein are the exclusive remedies under this warranty, whether based on contract, tort or otherwise.