

# Fluorescent Slide Dimmer

Single Pole or 3-Way

Cat. No. DS710-1, 1200VA-120VAC, 60Hz, 1500VA-277VAC, 60Hz  
 For Use with fixtures using 0-10V dimmable power supply/drivers, Advance Transformer Mark 7®  
 OSRAM Sylvania QUICKTRONIC® Helios™ or equivalent dimmable ballasts

## INSTALLATION INSTRUCTIONS

### WARNINGS:

- **TO AVOID FIRE, SHOCK, OR DEATH: TURN OFF POWER** at circuit breaker or fuse and test that power is off before wiring or servicing fixture!
- **TO AVOID FIRE, SHOCK, OR DEATH:** use only with the appropriate LED 0-10V dimmable power supplies/drivers, Advance Transformer 120/277V Mark 7® 0-10V ballasts or OSRAM Sylvania QUICKTRONIC® Helios™ electronic ballasts.
- **TO AVOID FIRE, PERSONAL INJURY OR PROPERTY DAMAGE, DO NOT** install to control a receptacle, a motor or a transformer-operated appliance, or any other lighting sources than those specified.
- To be installed and/or used in accordance with appropriate electrical codes and regulations.
- If you are unsure about any part of these instructions, consult an electrician.
- Use this device **WITH COPPER OR COPPER CLAD WIRE ONLY.**

### CAUTIONS:

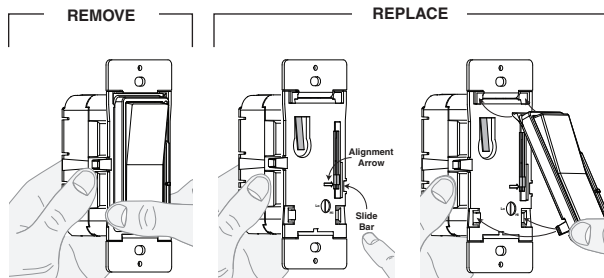
- When retrofitting dimming ballasts into fixtures that originally had Instant Start ballasts, the sockets **MUST** be replaced with Rapid Start sockets to allow proper dimmer operation and prevent damage to the dimming ballast. Refer to the instructions provided with the ballast.
- Use only one (1) dimmer in a 3 or 4-way circuit. The switch(es) will turn the light ON at the brightness level selected at the dimmer.
- To avoid damage to the product, **DO NOT** use disinfecting products, including foggers, sprays or other types of atomized cleaning agents. **DO NOT** spray liquid onto the product. To clean use a damp cloth with mild soap.

### Tools needed to install your Dimmer

- Slotted/Philips Screwdriver
- Electrical Tape
- Ruler
- Pliers
- Pencil
- Cutters

### Changing the color of your Dimmer

If a color change kit is provided with your device, proceed with the following step before wiring the device if you need to change the color. Otherwise, proceed with the "Installing Dimmer by itself or with other devices" section.



Press the side of the color kit at either bottom tab and pull forward to release.

Align slide bar with alignment arrow as shown. Move the slide bar of the color kit to the bottom.

Insert top tabs of the color kit into the slots on the top of the dimmer. Then press the bottom of the color kit in until it snaps into place.

### Installing Dimmer by itself or with other devices

No derating is required in multi-device applications.

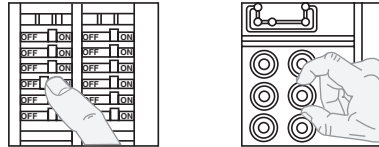
#### MAXIMUM BULB WATTAGE:

0-10VDC ballasts are rated in Volt-Amps (VA). The maximum number of ballast per dimmer is based on the load VA rating. The maximum bulb wattage is determined by the efficiency of the ballast. Ballast efficiencies will vary from different manufacturers; consider 80% efficient as average. Use the chart to determine maximum bulb wattage for typical ballast efficiency ratings. Use with Leviton's OPP20 Power Pack to increase the switch rating to 20 Amps for 120 and 277 VAC Ballast.

MAXIMUM BULB WATTAGE AT 80% EFFICIENCY				
Volts	Rating	Single	Two Devices	More than 2 Devices
120V	1200VA	960W	960W	960W
277V	1500VA	1200W	1200W	1200W

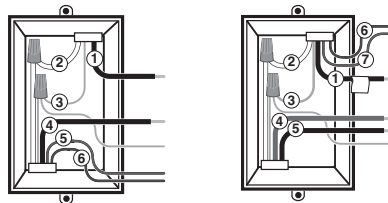
### Installing your Dimmer

- Step 1** **WARNING: TO AVOID FIRE, SHOCK, OR DEATH; TURN OFF POWER** at circuit breaker or fuse and test that power is off before wiring or servicing fixture!



- Step 2** **Identifying your wiring application (most common):**

**NOTE:** If the wiring in the wall box does not resemble any of these configurations, consult an electrician.



#### Single Pole

1. Line (Hot)
2. Neutral
3. Ground
4. Load
5. Pink (-) or Gray (-)
6. Violet (+)

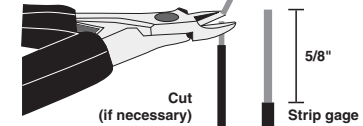
#### 3-Way

1. Load (See note below)
2. Neutral
3. Ground
4. First Traveler – note color
5. Second Traveler – note color
6. Pink (-) or Gray (-)
7. Violet (+)

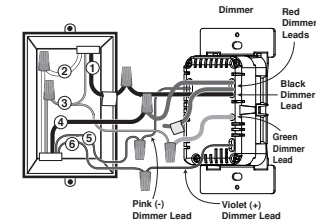
**NOTE:** For 3-Way applications, note that one of the screw terminals from the old switch being removed will usually be a different color (Black) or labeled Common. Tag that wire with electrical tape and identify as the common (Line or Load) in both the dimmer wall box and 3-way wall box.

### Step 3 Preparing and connecting wires:

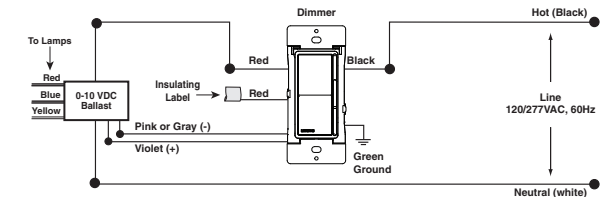
- Make sure that the ends of the wires from the wall box are straight (**cut if necessary**).
- Remove 5/8" (1.6 cm) of insulation from each wire in the wall box.
- **For Single-Pole Application, go to Step 4a.**
- **For 3-Way Application, go to Step 4b.**



### Step 4a Single Pole Wiring Application:



#### Wiring Diagram 1



#### Connect wires per WIRING DIAGRAM as follows:

- Green or bare copper wall box wire to **GREEN** dimmer lead.
- Line Hot wall box wire to **BLACK** dimmer lead.
- Load wall box wire to **RED** dimmer lead.
- Remaining **RED** Dimmer lead should have a label affixed. **DO NOT REMOVE** this label in a single pole application. **NOTE:** If the insulating label is not affixed to the second **RED** lead use electrical tape or a wire connector to cover.
- Violet dimmer lead to (+) Violet connection on ballast.
- Pink dimmer lead to (-) Pink or (-) Gray connection on ballast.

Proceed to Step 5.

