

Compact Fluorescent Slide Dimmer

Single Pole and 3-Way (Two Location)
 Cat. No. 6673-P – CFL 300W, Incandescent 600W
 120VAC, 60Hz

INSTALLATION INSTRUCTIONS

WARNINGS:

- To be installed and/or used in accordance with appropriate electrical codes and regulations.
- If you are unsure about any part of these instructions, consult an electrician.
- To avoid overheating and possible damage to this device and other equipment, do not install to control a receptacle, a motor- or a transformer-operated appliance, or any other lighting sources than those specified herein.
- Use only one (1) dimmer in a 3- or 4-way circuit. The switch(es) will turn the light on at the brightness level selected at the dimmer.

CAUTIONS:

- Disconnect power at circuit breaker or fuse when servicing fixture.
- Use with compatible **dimnable** CFL bulbs, incandescent or 120V halogen fixtures only.
- This device is intended for use with compatible CFL bulbs, including Feit ecobulb dimmable CFL bulbs, Ecosmart dimmable CFL bulbs, Phillips Marathon Classic dimmable CFL bulbs.
- When multiple bulbs are used with one dimmer **DO NOT** mix light sources. Either all bulbs shall be CFL or all bulbs shall be incandescent. Using the same make/model of each bulb will enhance dimmer performance.
- Use this device with **copper or copper clad wire only**.

Tools needed to install your Dimmer

Slotted/Philips Screwdriver Electrical Tape Pliers
 Pencil Cutters Ruler

Installing Dimmer by itself or with other devices

If installing Dimmer in a single device application, proceed with the **INSTALLING YOUR DIMMER** section. If installing Dimmer in a multi-device application, proceed as follows:

MULTI-DEVICE APPLICATION:

In incandescent multi-dimmer installations, the reduction of the dimmer's capacity is required. Refer to the chart for maximum load per dimmer. No derating is required for use in Dimmable CFL multi-dimmer installations.

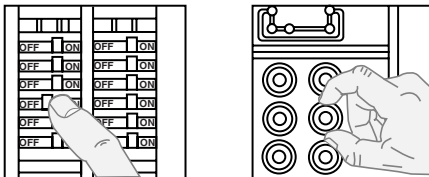
MAXIMUM LOAD PER DIMMER FOR MULTI-DEVICE (Incandescent)

Cat. No.	Single	Two Devices	More than 2 Devices
6673-P	600W	500W	400W

INSTALLING YOUR DIMMER

NOTE: Use check boxes when Steps are completed.

Step 1 **WARNING:** To avoid fire, shock, or death; **TURN OFF POWER** at circuit breaker or fuse and test that power is off before wiring!



Step 2 **Removing existing switch:** Remove existing wallplate and switch mounting screws. Carefully pull switch from wall box. **DO NOT** remove wires attached to the switch at this time.

Step 3 Identifying your wiring application (most common):

NOTE: If the wiring in the wall box does not resemble any of these configurations, consult a qualified electrician.

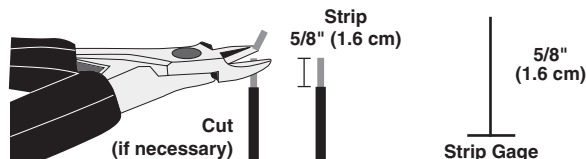
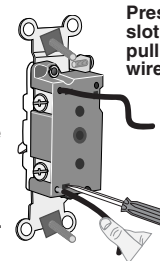


Single-Pole: Look at the back of your switch. If there are 2 wires connected to two screw terminals (not including a green or bare copper wire used for grounding), you have a Single-Pole switch.

3-Way: Look at the back of your switch. If there are 3 wires connected to three screw terminals (not including a green or bare copper wire used for grounding), you have a 3-Way switch. Note that one of the screw terminals will usually be a different color (black) or labeled Common. Tag that wire with electrical tape to identify.

Step 4 Disconnecting switch wires and preparing wires:

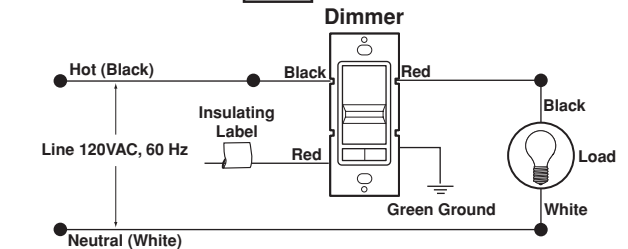
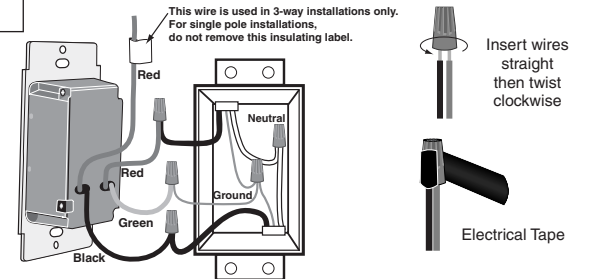
- Disconnect wires from screw terminals or Quickwire™ slots (shown).
- Pull off pre-cut insulation from Dimmer leads. Twist strands tightly together.
- Make sure that the ends of the wires from the wall box are **straight (cut if necessary)**.
- Remove 5/8" (1.6 cm) of insulation from each wire in the wall box (shown).
- For Single-Pole Application, go to Step 5a.**
- For 3-Way Application, go to Step 5b.**



For non-standard wiring applications, refer to Wire Nut and Connector Size Chart

WIRE CONNECTOR / # OF COND. COMBINATION CHART
1- #12 w/ 1 to 3 #14, #16 or #18
2- #12 w/ 1 or 2 #16 or #18
1- #14 w/ 1 to 4 #16 or #18
2- #14 w/ 1 to 3 #16 or #18

Step 5a Single-Pole Wiring Application:

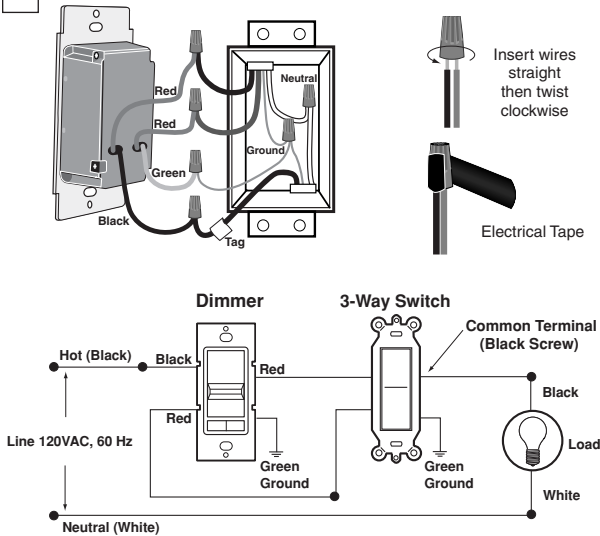


Connect wires per WIRING DIAGRAM as follows:

- Screw wire nuts on clockwise making sure no bare conductors show below the wire connectors. Secure each connector with electrical tape.
 - Green dimmer Ground lead to Green or bare copper wire in wall box.
 - Black dimmer lead to any wall box wire removed from old switch.
 - Red dimmer lead without insulating label to remaining wall box wire.
 - Remaining Red dimmer lead should have Red insulation label affixed.
- Proceed to Step 6.**

NOTE: If insulating label is not affixed to Red lead, use a small wire nut or electrical tape to cap off. **Proceed to Step 6.**

Step 5b 3-Way Wiring Application:



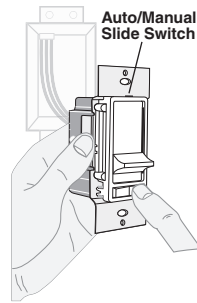
Connect wires per WIRING DIAGRAM as follows:

Screw wire nuts on clockwise making sure no bare conductors show below the wire connectors. Secure each connector with electrical tape.

- Green dimmer Ground lead to Green or bare copper wire in wall box.
- Black dimmer lead to tagged (common) wall box wire identified when removing old switch.
- Remove Red insulating label from Red lead.
- Any Red dimmer lead to any of the remaining wall box wires.
- Remaining Red dimmer lead to remaining wall box wire.

Step 6 Testing your Dimmer prior to mounting in wall box:

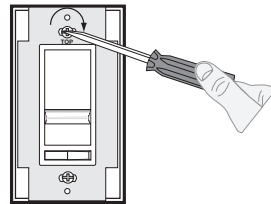
NOTE: Cat. No. 6673-P is shipped with the Auto/Manual Mode Switch in the Automatic position. This switch should only be moved to the manual position if a CFL flickers at the low end of the dim range by using an insulated screwdriver to slide the switch at the TOP of the frame to manual position before mounting wallplate.



- Restore power at circuit breaker or fuse.
- Carefully holding Dimmer as shown proceed as follows:
Slide control lever to highest position. If lights are not ON, press rocker. Lights should turn ON to brightest level.

If lights do not turn ON, refer to the TROUBLESHOOTING section.

Step 7 Dimmer Mounting: TURN OFF POWER AT CIRCUIT BREAKER OR FUSE.



Installation may now be completed by carefully positioning all wires to provide room in wall box for dimmer. Mount dimmer into box with mounting screws supplied. Attach Decora® wallplate.

Step 8 Restore Power: Restore power at circuit breaker or fuse. Installation is complete.

OPERATION

Automatic Mode will automatically detect whether the light source is CFL or incandescent and adjust performance accordingly.

Manual Mode should be used for CFL bulbs only. In this mode the dimmer will always kick start the bulb and you can adjust the minimum light level manually. To avoid flickering at the low end of the dim range turn the lights ON to full bright and move the Auto/Manual slide switch to the Manual position. Set the dim level by sliding the dim bar down to the desired level (the lowest level before the CFL begins to flicker). Then move the Auto/Manual slide switch back to Auto Mode to lock in the desired low end of dimming. The dimming range will adjust automatically based on the dim setting you have chosen.

If multiple bulbs are used per dimmer **DO NOT MIX LIGHT SOURCES** (use only all incandescent or all CFLs of the same recommended make/model). Mixing light sources may cause improper dimming.

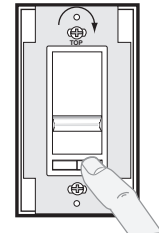
NOTE: If using the dimmer in a 3-way application, the lights will turn ON at brightness set on dimmer's slide control lever. The lighting level can be controlled from the dimmer location and can be switched ON/OFF from either the dimmer or switch location.

ON: Push rocker switch ON.

OFF: Push rocker switch OFF.

BRIGHTEN: Raise slider control lever to desired level of light.

DIM: Lower slider control lever.



TROUBLESHOOTING

- Lights Flickering
 - Lamp has a bad connection.
 - Wires not secured firmly with wire connectors.
- Light does not turn ON
 - Circuit breaker or fuse has tripped.
 - Lamp is burned out.
 - Lamp Neutral connection is not wired.
- CFL flickers at low end of dim range
 - raise the low end of dimming to avoid flickering.

NOTE: If further information is needed in identifying the HOT wire in a 3-Way application, go to Leviton's website at www.leviton.com.

Recommended Dimmable CFL Bulbs

Philips EL/A R30 DIM16W
Philips EL/A R40 DIM20W
Feit BPESL23T/DIM (23W)
Feit BPESL15T/DIM(15W)
Ecosmart ES5M10123 (23W) or Technical Consumer Products Model 10123
Ecosmart ES5R315DIM (15W) or Technical Consumer Products Model 2R3015DIM

For Technical Assistance Call: 1-800-824-3005 (U.S.A. Only)
www.leviton.com

LIMITED 5 YEAR WARRANTY AND EXCLUSIONS

Leviton warrants to the original consumer purchaser and not for the benefit of anyone else that this product at the time of its sale by Leviton is free of defects in materials and workmanship under normal and proper use for five years from the purchase date. Leviton's only obligation is to correct such defects by repair or replacement, at its option, if within such five year period the product is returned prepaid, with proof of purchase date, and a description of the problem to **Leviton Mfg. Co., Inc. 201 North Service Road, Melville, N.Y. 11747**. This warranty excludes and there is disclaimed liability for labor for removal of this product or reinstallation. This warranty is void if this product is installed improperly or in an improper environment, overloaded, misused, opened, abused, or altered in any manner, or is not used under normal operating conditions or not in accordance with any labels or instructions. **There are no other or implied warranties of any kind, including merchantability and fitness for a particular purpose, but if any implied warranty is required by the applicable jurisdiction, the duration of any such implied warranty, including merchantability and fitness for a particular purpose, is limited to five years. Leviton is not liable for incidental, indirect, special, or consequential damages, including without limitation, damage to, or loss of use of, any equipment, lost sales or profits or delay or failure to perform this warranty obligation.** The remedies provided herein are the exclusive remedies under this warranty, whether based on contract, tort or otherwise.