

# Single Pole Humidity Sensor and Fan Controller

Cat. Nos. IPHS5 - INDOOR USE ONLY

120VAC, 60Hz - Single Pole Only

Incandescent: 600W - MLV/Fluorescent: 400VA - LED/CFL: 150W - Fan: 1/6Hp



## WARNINGS

- **TO AVOID FIRE, SHOCK OR DEATH: TURN OFF POWER AT CIRCUIT BREAKER OR FUSE AND TEST THAT THE POWER IS OFF BEFORE WIRING!**
- **TO AVOID PERSONAL INJURY OR PROPERTY DAMAGE, DO NOT** install to control a receptacle, or a load in excess of the specified rating.
- To be installed and/or used in accordance with electrical codes and regulations.
- If you are not sure about any part of these instructions, consult an electrician.

## CAUTIONS

- Clean outer surface gently with damp cloth only. **DO NOT** use soaps or cleaning liquids.
- No user serviceable components. **DO NOT** attempt to service or repair.
- Use this device **WITH COPPER CLAD WIRE ONLY**.

DI-000-IPHS5-02B

## INSTALLATION

ENGLISH

### Features

The humidity sensor and fan controller senses the humidity of your bathroom and turns your bath fan or fan/light on when the humidity gets too high, reducing condensation in your bathroom and increasing ventilation when used in other household spaces.

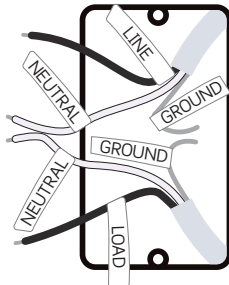
- Compatible with Incandescent, LED, CFL and Fluorescent loads when used with combination fan and light fixtures.
- Sensitivity adjustment.
- Built in countdown timer feature for manual operation.
- Automatic ventilation/air circulate mode for continuous operation with hourly preset time outs.

### Installation

**WARNING: TO AVOID FIRE, SHOCK OR DEATH,** turn off power at circuit breaker or fuse and test that the power is off before wiring.

#### 1. Identify your wires (most common):

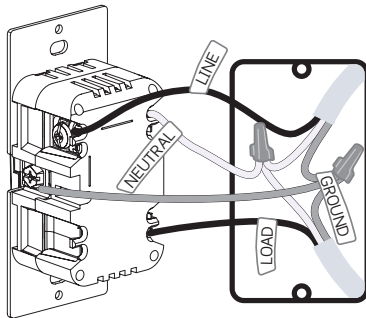
NOTE: If the wiring in the wall box does not resemble this configuration, consult an electrician.



#### 2. Wire.

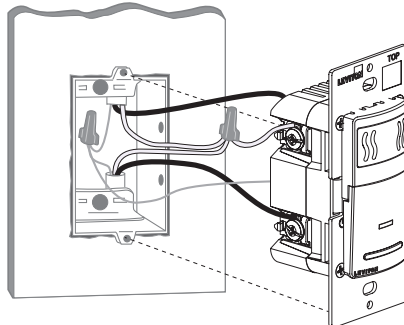
Working on one connection at a time, connect wires as shown.

NOTE: Neutral connection is required.



#### 3. Test.

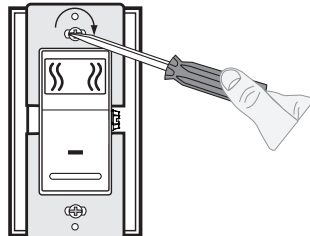
Restore power. Locator light will illuminate but will not blink. Refer to Locator Light status chart to determine operational status.



#### 4. Mount.

Turn off power at circuit breaker before completing the outlet installation.

- Gently push wires into wall box. Screw outlet to box.
- Install wallplate base and snap on Decora® wallplate.
- Restore power.



### Location

- For bathroom applications the device should be placed at a level to detect steam. Placing the detector directly above a heater or near drafts is not recommended.
- NOTE: DO NOT use to control a fan/light combination where the fan/light is the only means of illumination.
- NOTE: The Leviton humidity sensor and fan control will not eliminate condensation and must be used

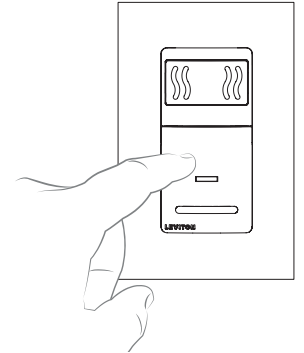
### You Will Need:

- Slotted/Phillips screwdriver
- Pencil
- Electrical tape
- Cutters
- Pliers
- Ruler

### Operation

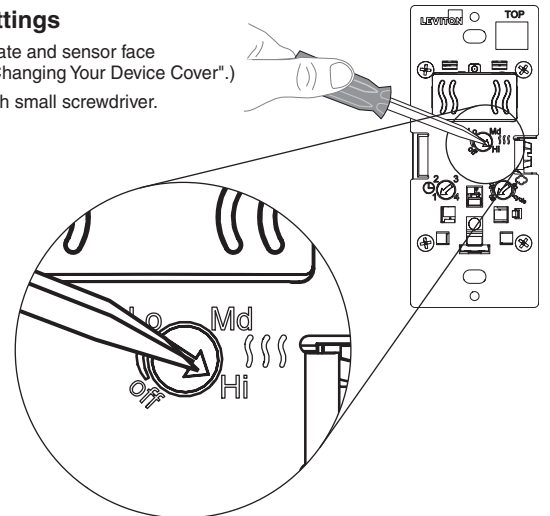
#### 1. Manual (for all modes of operation)

- Press push pad to manually turn on the load. Internal time will activate and turn off load when set time out expires.
- Press and release push pad to manually turn off load.



#### 2. To adjust settings

- Remove wallplate and sensor face (see section "Changing Your Device Cover".)
- Adjust dials with small screwdriver.



#### 3. Dial Descriptions

##### Time

1. Adjust the time selector to set the time out duration, which is the minimum desired length of time the fan will remain ON after being turned on in any mode of operation.
2. For use with all Automatic Modes of Operation.

##### Sensitivity

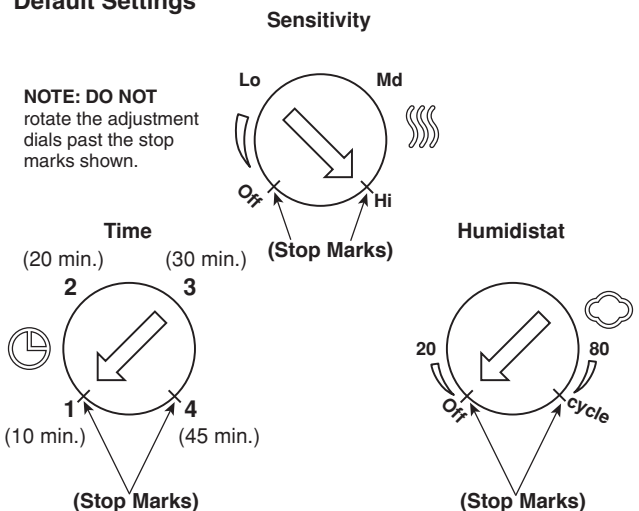
To reduce false activation, reduce sensitivity.

1. Hi - use for large rooms
2. Medium - use for medium sized rooms
3. Low - use for small rooms
4. OFF - used in Air Cycle mode.

##### Humidistat

1. OFF - device ignores the humidity set point and controls fan based on detection of excess humidity.
2. Minimum relative humidity - when the humidity is below your set level, the fan can only be turned on manually.

#### 4. Default Settings

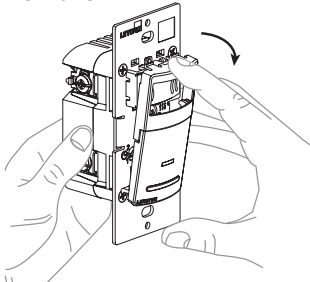


Locator Light Status Chart

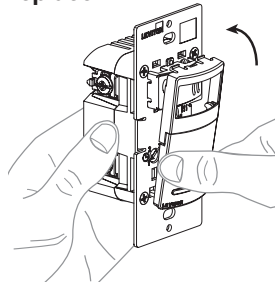
Locator light action	Status
ON	Fan OFF
OFF	Fan ON
Blinking 2 seconds ON, 2 seconds OFF	Air Cycle Mode is active
Blinking 2 seconds ON, 1/10 second OFF	Manual override
Fast blink	Defective unit

### Changing your device color

#### Remove



#### Replace



DI-000-IPHS5-02B

## 5. Mode Descriptions

Modes	When to use this setting	Dials			Your fan will turn on when...	How the dial should look
		Time	Sensitivity	Humidistat		
Auto On/ Auto Off (factory default)	Bathrooms and rooms where large changes in humidity can occur	Any	Low, Med or High <ul style="list-style-type: none"> <li><b>Low</b> - needs &gt;20% increase in humidity to trigger</li> <li><b>Med</b> - between 10 and 20%</li> <li><b>High</b> - needs &lt;10% increase in humidity to trigger</li> </ul>	Off	There is a change in humidity that is greater than or equal to the percentage of the sensitivity setting.	
Auto On/ Auto Off with humidity set point	Bathrooms and rooms where large changes in humidity can occur	Any	Low, Med or High <ul style="list-style-type: none"> <li><b>Low</b> - needs &gt;20% increase in humidity to trigger</li> <li><b>Med</b> - between 10 and 20%</li> <li><b>High</b> - needs &lt;10% increase in humidity to trigger</li> </ul>	Between 20 and 80	The Relative Humidity is greater than or equal to the percentage of the sensitivity setting AND the relative humidity is greater than or equal to the humidistat setting.	
Air Cycle	Basements and rooms requiring regular ventilation such as bathrooms in locations with humid climates	Any	Off	Cycle	Every hour for the number of minutes you have set on the Time dial (X minutes). <b>NOTE:</b> The fan will go on for X minutes and will be off for 60 minus X minutes. <b>NOTE:</b> Any time the push pad is pressed while the device is operating in a air cycle mode, the mode will cease function until the push pad is pressed again.	
Humidistat	Basements, laundry rooms and damp rooms	Any	Off	Between 20 and 80	Relative humidity is greater than or equal to the humidistat setting. Fan will run for the number of minutes you have set on the Time dial (X minutes). <b>NOTE:</b> The fan will run for X minutes every hour until the relative humidity is less than the humidistat setting.	
Manual Timer	Rooms that need to have the fan turned on once for a short time	Any	Off	Off	Runs the fan for X minutes (X=the number you set on the Time dial) when the button is pressed. Stops fan if pressed while running.	

### What to do if...

Mode	Issue	Make this adjustment
Auto Mode or Auto Mode with humidistat	False triggers	<ul style="list-style-type: none"> <li>lower the sensitivity setting</li> <li>raise the humidistat setting</li> </ul>
Auto Mode or Auto Mode with humidistat	Does not trigger/turns on too late	<ul style="list-style-type: none"> <li>raise the sensitivity setting</li> <li>lower the humidistat setting</li> <li>ensure there are no drafts</li> </ul>
Auto Mode or Auto Mode with humidistat	False triggers, but does not trigger when taking a shower	<ul style="list-style-type: none"> <li>in large bathrooms, raise the sensitivity setting</li> <li>raise the minimum humidistat</li> </ul>
Humidistat Mode	Does not trigger	<ul style="list-style-type: none"> <li>ensure sensitivity setting is Off</li> <li>lower the humidistat setting</li> </ul>
Air Cycle Mode	Does not trigger	<ul style="list-style-type: none"> <li>Turn on fan by pressing push pad</li> <li>DO NOT manually turn off, let it time out</li> <li>The LED should be blinking 2 seconds on, 2 seconds off</li> </ul>

**FCC STATEMENT:** This device complies with Part 15 of the FCC Rules. Operation is subject to following two conditions: (1) this device may not cause harmful interference, and (2) this device must accept any interference received, including interference that may cause undesired operation of the device. This equipment has been tested and found to comply with the limits for a Class B Digital Device, pursuant to Part 15 of the FCC Rules. These limits are designed to provide reasonable protection against harmful interference in a residential installation. This equipment generates, uses, and can radiate radio frequency energy and, if not installed and used in accordance with the instructions, may cause harmful interference to radio communications. However, there is no guarantee that interference will not occur in a particular installation. If this equipment does cause harmful interference to radio or television reception, which can be determined by turning the equipment OFF and ON, the user is encouraged to try to correct the interference by one or more of the following measures:

- Reorient or relocate the receiving Antenna.
- Increase the separation between the equipment and the receiver.
- Connect the equipment into an outlet on a circuit different from that to which the receiver is connected.
- Consult the dealer or an experienced radio/tv technician for help.

**FCC CAUTION:** Any changes or modifications not expressly approved by Leviton Manufacturing Co., Inc., could void the user's authority to operate the equipment.

**LIMITED 5 YEAR WARRANTY** For Leviton's limited product warranty, go to [www.leviton.com](http://www.leviton.com). For a printed copy of the warranty, call 1-800-824-3005.

Patents covering this product, if any, can be found on [www.leviton.com/patents](http://www.leviton.com/patents).

#### FOR CANADA ONLY

For warranty information and/or product returns, residents of Canada should contact Leviton in writing at Leviton Manufacturing of Canada Ltd to the attention of the Quality Assurance Department, 165 Hymus Blvd, Pointe-Claire (Quebec), Canada H9R 1E9 or by telephone at 1-800-405-5320.

**For Technical Assistance Call: 1-800-824-3005 (USA Only)  
or 1-800-405-5320 (Canada Only) [www.leviton.com](http://www.leviton.com)**