

# FLUORESCENT SLIDE DIMMER

Single Pole or 3-Way  
 Cat. No. DSH08-1, 8A-120VAC, 60Hz / Cat. No. DSH06-7, 6A-277VAC, 60Hz  
 For use with Lutron Hi-Lume® or Eco-10® (EcoSeries) electronic dimmable ballasts.

### WARNINGS AND CAUTIONS:

- **TO AVOID FIRE, SHOCK, OR DEATH: TURN OFF POWER** at circuit breaker or fuse and test that power is off before wiring or servicing fixture!
- **TO AVOID FIRE, SHOCK, OR DEATH:** use only with the appropriate Lutron Hi-Lume® or Eco-10® (EcoSeries) electronic dimmable ballasts for controlling the specific fluorescent lamps.
- To be installed and/or used in accordance with appropriate electrical codes and regulations.
- If you are unsure about any part of these instructions, consult an electrician.
- Use this device **with copper or copper clad wire only**.

### WARNINGS AND CAUTIONS:

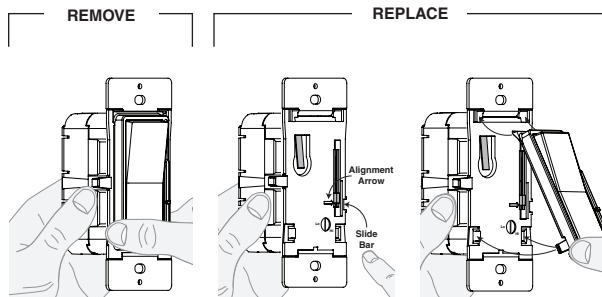
- When retrofitting dimming ballasts into fixtures that originally had Instant Start ballasts, the sockets **MUST** be replaced with Rapid Start sockets to allow proper dimmer operation and prevent damage to the dimming ballast. Refer to the instructions provided with the ballast.
- Use only one (1) dimmer in a 3 or 4-way circuit. The switch(es) will turn the light on at the brightness level selected at the dimmer.
- To avoid overheating and possible damage to this device and other equipment, **DO NOT** install to control a receptacle, a motor or a transformer-operated appliance, or any other lighting sources than those specified.

### Tools needed to install your Dimmer

- Slotted/Philips Screwdriver
- Electrical Tape
- Ruler
- Pliers
- Pencil
- Cutters

### Changing the color of your Dimmer

If a color change kit is provided with your device, proceed with the following step before wiring the device if you need to change the color. Otherwise, proceed with the "Installing Dimmer by itself or with other devices" section.



Press the side of the color kit at either bottom tab and pull forward to release.

Align slide bar with alignment arrow as shown. Move the slide bar of the color kit to the bottom.

Insert top tabs of the color kit into the slots on the top of the dimmer. Then press the bottom of the color kit in until it snaps into place.

### Installing Dimmer by itself or with other devices

No derating is required in multi-device applications.

#### MAXIMUM CURRENT RATING:

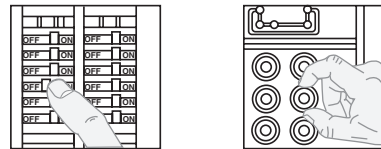
The maximum current rating is 8A at 120VAC for Cat. No. DSH08-1 and 6A at 277VAC for Cat. No. DSH06-7. This rating can be measured from the incoming Hot (Black) on the dimmer. Refer to the ballast label to determine the total load on the dimmer circuit. The total load is calculated by adding all of the ballast input currents for all ballasts on dimmer.

MAXIMUM CURRENT RATING					
Cat. No.	Volts	Rating	Single	Two Devices	More than 2 Devices
DSH08-1	120V	8A	8A	8A	8A
DSH06-7	277V	6A	6A	6A	6A

### Installing your Dimmer

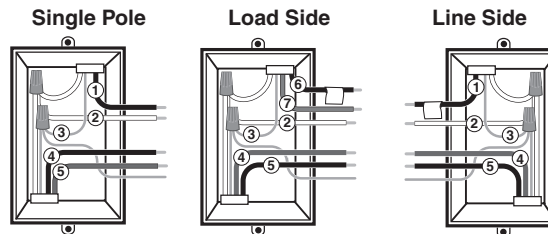
**NOTE:** Use check boxes  when Steps are completed.

#### Step 1 WARNING: TO AVOID FIRE, SHOCK, OR DEATH; TURN OFF POWER at circuit breaker or fuse and test that power is off before wiring or servicing fixture!



#### Step 2 Identifying your wiring application (most common):

**NOTE:** If the wiring in the wall box does not resemble any of these configurations, consult an electrician.



#### Single Pole

1. Line (Hot)
2. Neutral
3. Ground
4. Load (Switched)
5. Load (Dimmed)

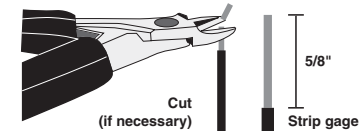
#### 3-Way

1. Line (See note below)
2. Neutral
3. Ground
4. First Traveler – note color
5. Second Traveler – note color
6. Load (Switched)
7. Load (Dimmed)

**NOTE:** For 3-Way applications, note that one of the screw terminals from the old switch being removed will usually be a different color (Black) or labeled Common. Tag that wire with electrical tape and identify as the common (Line or Load) in both the dimmer wall box and 3-way wall box.

### Step 3 Preparing and connecting wires:

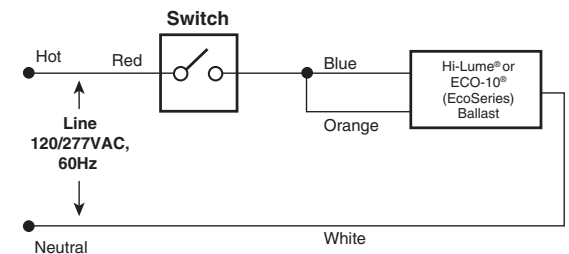
- Make sure that the ends of the wires from the wall box are straight (**cut if necessary**).
- Remove 5/8" (1.6 cm) of insulation from each wire in the wall box (shown).



#### CAUTION:

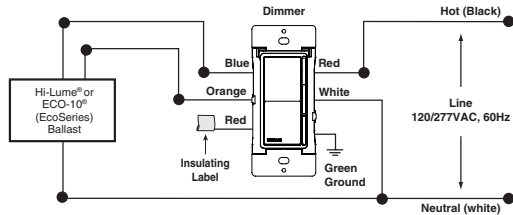
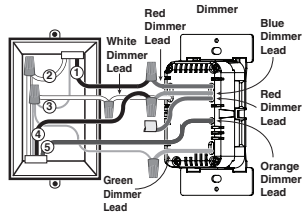
Before installing your dimmer, check new installation wiring for any shorts in the circuit.

- **Turn OFF Power** at circuit breaker or fuse.
- Using a standard switch, connect appropriate wires to Hot circuit and ballast (**refer to diagram**).
- **Turn ON Power**. If lights do not turn ON, there is an open in the circuit.
- If required, Turn OFF Power and correct wiring. Verify circuit again. Warranty of dimmer will be voided if dimmer is turned ON in a shorted circuit.



- **For Single-Pole Application, go to Step 4a.**
- **For 3-Way Application, go to Step 4b.**

## Step 4a Single-Pole Wiring Application:



### Connect wires per WIRING DIAGRAM as follows:

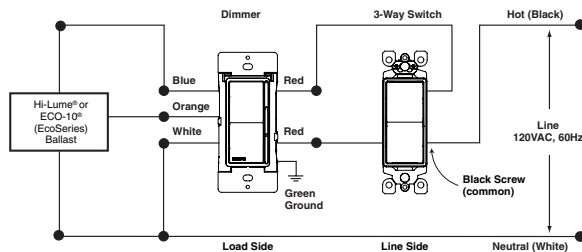
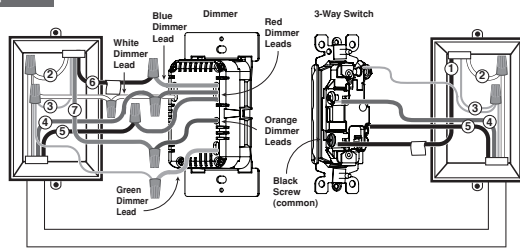
- Green or bare copper wall box wire to **GREEN** dimmer lead.
- Neutral wall box wire to **WHITE** dimmer lead.
- Line Hot wall box wire to a **RED** dimmer lead.
- Load (Dimmed) wall box wire to **ORANGE** dimmer lead.
- Load (Switched) wall box wire to **BLUE** dimmer lead.
- Remaining **RED** Dimmer lead should have a label affixed.

**DO NOT REMOVE** this label in a single pole application.

**NOTE:** If the insulating label is not affixed to the second **RED** lead use electrical tape or a wire connector to cover.

Proceed to Step 5.

## Step 4b 3-Way Wiring Application:



## Step 4b Cont.

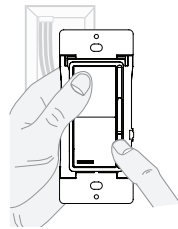
### Connect wires per WIRING DIAGRAM as follows:

**NOTE:** Dimmer must be installed on the load side of the 3-way circuit.

- Green or bare copper wall box wire to **GREEN** dimmer lead.
- Neutral wall box wire to **WHITE** dimmer lead.
- Common (Load switched) wire to **BLUE** dimmer lead.
- Load (dimmed) wire to **ORANGE** dimmer lead.
- Remove insulating label and connect the first traveler wire to the **RED** dimmer lead.
- Connect the second traveler wire to the remaining **RED** dimmer lead.

Proceed to Step 5.

## Step 5 Testing your Dimmer prior to mounting in the wall box:

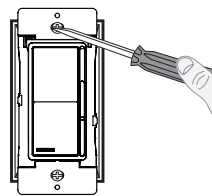


- Restore power at circuit breaker or fuse.
- Carefully holding dimmer, move slider control lever to highest position and press the top of the Decora® rocker. Lights should turn ON to brightest level.

If lights does not turn ON, refer to the **TROUBLESHOOTING** section.

## Step 6 Dimmer Mounting:

### TURN OFF POWER AT CIRCUIT BREAKER OR FUSE.



Installation may now be completed by carefully positioning all wires to provide room in wall box for dimmer. Mount dimmer into box with mounting screws supplied.

Attach wallplate.

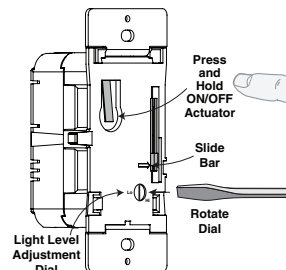
## Step 7 Restore Power:

Restore power at circuit breaker or fuse.  
Installation is complete.

## Programming

### Setting Minimum Light Level

- Press bottom of Decora® rocker to turn the dimmer OFF and move the slide bar to the bottom.
- Remove color kit (see Changing the color of your Dimmer section on page 1).
- Press and hold the on/off actuator.
- Rotate the light adjustment dial clockwise to increase the minimum light level or counter-clockwise to decrease the minimum light level.
- Release the on/off actuator.
- Replace color kit (see Changing the color of your Dimmer section on page 1).



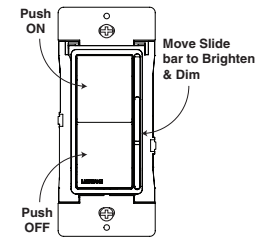
## Operation

### ON/OFF:

- Press top of Decora® rocker - Lights will turn ON.
- Press bottom of Decora® rocker - Lights will turn OFF.

### BRIGHTEN & DIM:

- Move slide bar - Lights will BRIGHTEN or DIM.



## Troubleshooting

### Lights flickering

- Lamp has bad connection.
- Wires not secured firmly with wire connectors.

### Light does not turn ON

- Circuit breaker or fuse has tripped.
- Lamp or ballast has burned out.
- Lamp sockets are not Rapid Start type.
- Lamp Neutral connection is not wired.

**NOTE:** If further information is needed in identifying the **HOT** wire in a 3-Way application, go to Leviton's website at [www.leviton.com](http://www.leviton.com).

Lutron, Hi-Lume, and Eco-10 are registered trademarks of Lutron Electronics Co., Inc.

For Technical Assistance Call: 1-800-824-3005 (U.S.A. Only) [www.leviton.com](http://www.leviton.com)

### FOR CANADA ONLY

For warranty information and/or product returns, residents of Canada should contact Leviton in writing at **Leviton Manufacturing of Canada Ltd to the attention of the Quality Assurance Department, 165 Hymus Blvd, Pointe-Claire (Quebec), Canada H9R 1E9** or by telephone at 1 800 405-5320.

© 2014 Leviton Mfg. Co., Inc

PK-A3031-10-00-2A-X3

## LIMITED 5 YEAR WARRANTY AND EXCLUSIONS

Leviton warrants to the original consumer purchaser and not for the benefit of anyone else that this product at the time of its sale by Leviton is free of defects in materials and workmanship under normal and proper use for five years from the purchase date. Leviton's only obligation is to correct such defects by repair or replacement, at its option. For details visit [www.leviton.com](http://www.leviton.com) or call 1-800-824-3005. This warranty excludes and there is disclaimed liability for labor for removal of this product or reinstallation. This warranty is void if this product is installed improperly or in an improper environment, overloaded, misused, opened, abused, or altered in any manner, or is not used under normal operating conditions or not in accordance with any labels or instructions. There are no other or implied warranties of any kind, including merchantability and fitness for a particular purpose, but if any implied warranty is required by the applicable jurisdiction, the duration of any such implied warranty, including merchantability and fitness for a particular purpose, is limited to five years. Leviton is not liable for incidental, indirect, special, or consequential damages, including without limitation, damage to, or loss of use of, any equipment, lost sales or profits or delay or failure to perform this warranty obligation. The remedies provided herein are the exclusive remedies under this warranty, whether based on contract, tort or otherwise.