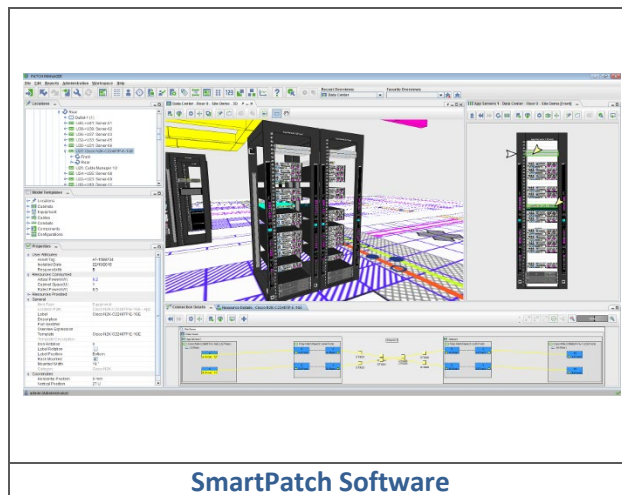


APPLICATION

SmartPatch software gives you the tools you need to manage your physical network layer simply, efficiently, and cost-effectively. By providing a full, transparent, up-to-date model of the Physical Layer, SmartPatch makes it easy to visualize and analyze your complete end-to-end cabling infrastructure, IT assets, racks, and power. With less time spent tracking connections and less opportunity for errors, the result is less downtime and reduced maintenance costs.

FEATURES

- Easy modeling of complete network infrastructure
- Management of copper, fiber, WAN, LAN and power infrastructure
- Optimization of moves, adds, and changes in the physical layer
- Creation of realistic rack and equipment visualizations
- Optimization of available network capacity
- Assessing the impact of loss of connectivity to power and network connections
- Data mining assets and connectivity
- Improvements to network communication paths



FEATURES & BENEFITS

Low Maintenance	A robust, server-based architecture that scales seamlessly with your enterprise growth for continued reliable, 24/7 operations, requiring minimal maintenance.
Accessible	SmartPatch offers a full web application and smartphone client. The server automatically synchronizes data with client processes, ensuring the latest data is always at your fingertips for both mobile and desktop users.
User Access Control	Incorporates fully customizable policy-based user access management controls, ensuring that user actions are kept in line with their assigned job role.
Reporting	Provides fully customized access and presentation of network data, ensuring that a variety of users can generate reports relevant to their requirements.
Lifecycle Support	Fully supported network infrastructure lifecycle, including design, installation, operation, and decommissioning. This support assists proper planning and execution of each stage.
Installation	SmartPatch is simple to install and set up. Available for both in-house installations and as a Software-as-a-Service (SaaS) solution.

STANDARDS COMPLIANCE

Labeling Scheme	ANSI/TIA-606-C	IT Service Management	ISO/IEC 20000
Information Security	ISO/IEC 27001	IT Infrastructure Library	ITIL

MINIMUM REQUIREMENTS – SMARTPATCH SERVER

Hardware Platform

- Processor: Dual Core 2.5GHz
- RAM: 8GB
- Hard disk: 1GB of available disk space
- Network: single Ethernet card

Software Platform

- Windows Server 2012 64-bit
- Windows Server 2008 64-bit
- Linux 64-bit

Database Managements Systems

- Microsoft SQL Server 2014, 2012, 2008
- Oracle
- MySQL
- PostgreSQL

Java / Apache Tomcat

- Oracle Java (7.x or 8.x) and Apache Tomcat (7.0.27 or above)

MINIMUM REQUIREMENTS – SMARTPATCH CLIENT

Hardware Platform

- Processor: 2GHz
- RAM: 4GB
- Hard disk: 100MB of available disk space
- Network: single Ethernet card

Software Platform

- Windows 10, 8, 7, Vista, XP
- Linux
- MacOS

Hardware supporting 3D modeling/rendering

- Processor: Quad Core 2GHz
- RAM: 8GB
- Graphics: Support for OpenGL 4.0 or above

Browser and Java

- Internet Explorer
- Mozilla Firefox
- Google Chrome
- Opera
- Oracle Java (7.x or 8.x)

Browser and Java supporting 3D modeling/rendering

- Oracle Java (7.x or 8.x) 64-bit

ORDER INFO - SMARTPATCH IN-HOUSE SOFTWARE

Part Number	Item Description
IPSSWSVR30R	SmartPatch In-House Software Solution - 30 racks
IPSSWSVRR10RT1	SmartPatch In-House Software Upgrade 10 Racks Tier 1 (31-390 racks)
IPSSWSVR10RT2	SmartPatch In-House Software Upgrade 10 Racks Tier 2 (391+ racks)
IPSSWSVRGSI	SmartPatch In-House Software GIS Integration Bridge
IPSSWSVRRDIB	SmartPatch In-House Software Data Integration Bridge
IPSSWSVRSDIB	SmartPatch In-House Software Switch Data Synchronization Bridge
IPSSWSVRREP	SmartPatch In-House Software Reporting Bridge
IPSSWSVRA5P	SmartPatch In-House Software Hardware Integration Bridge (500 ports)
IPSSWSVRSAE-1Y	SmartPatch In-House Software Annual Service Contract

Software includes unrestricted user-defined attributes, reports, work orders, resources, 3D visualization, and full access to the API. Service contract required for first-year for all in-house software installations.

ORDER INFO - SMARTPATCH SaaS SOFTWARE

Part Number	Item Description
IPSSWSVR30R-CA	SmartPatch SaaS Software Solution - 30 racks
IPSSWSVRR10RT1-CA	SmartPatch SaaS Software Upgrade 10 Racks Tier 1 (31-390 racks)
IPSSWSVR10RT2-CA	SmartPatch SaaS Software Upgrade 10 Racks Tier 2 (391+ racks)
IPSSWSVRGISI-CA	SmartPatch SaaS Software GIS Integration Bridge
IPSSWSVRRDIB-CA	SmartPatch SaaS Software Data Integration Bridge
IPSSWSVRSDIB-CA	SmartPatch SaaS Software Switch Data Synchronization Bridge
IPSSWSVRREP-CA	SmartPatch SaaS Software Reporting Bridge
IPSSWSVRA5P-CA	SmartPatch SaaS Software Hardware Integration Bridge (500 ports)

Software includes unrestricted user-defined attributes, reports, work orders, resources, 3D visualization, and full access to the API. Annual service contract is included with SaaS software installations.

*“Leviton is **dedicated to designing, developing, and manufacturing** sustainable **high-performance** structured cabling and speciality **cabling solutions.**”*

The information contained in this document is valid and correct at the time of issue. Leviton reserves the right to modify details without notice in light of subsequent standard/specification changes and ongoing technical developments.