

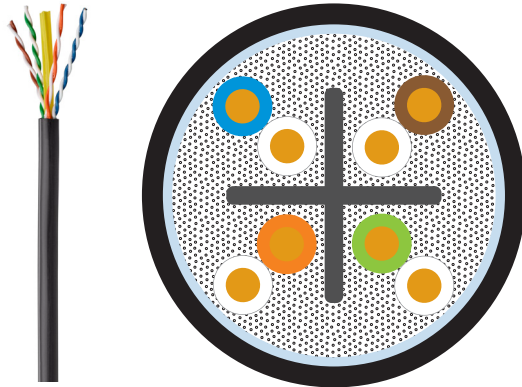
PRODUCT SPECIFICATIONS

Stadion Cat 6 OSP Extended Distance Cable

Stadion Cat 6 OSP Extended Distance Cable

APPLICATION

Stadion OSP (Outside Plant) is a category 6 cable designed with state-of-the-art technology to support outdoor extended distance applications. Its gel-filled core and rugged jacket provide water and sunlight resistance to support security cameras, Wi-Fi access points, and other devices in challenging environments. Send data and power to industry leading lengths with Stadion OSP cables.



COUNTRY OF ORIGIN

USA

WARRANTY INFORMATION

The Stadion OSP outdoor cable contains water blocking gel. These cables are designed for various outdoor applications such as on building, above ground, lashed, or within conduit; and self-supporting aerial installations. This cable is not intended for installation in indoor locations beyond applicable building codes. The cable has no rodent deterrent properties. For Leviton product warranties, go to Leviton.com/ns/warranty.

FEATURES & BENEFITS

- 7.62 mm (0.300") diameter gel-filled cable designed to support mission-critical extended distance applications in real-world conditions
- Supports 1000BASE-T and 100 W PoE up to 225 meters plug-to-plug
- Supports 10/100/1000 Mbps and 30, 60, 100 W PoE up to 200 meters in a 2, 3, or 4-conductor PARADIGM™ channel at temperatures up to 60 °C
- Supports extended reach applications up to 2.5 Gbps at 165 m when used in a PARADIGM™ channel, up to 60 °C
- Uses 22 AWG conductors to efficiently transmit high power PoE without generating excess heat.
- Features 7% IL margin above Cat 6 for unmatched signal strength
- Compliant with Cat 6 requirements for termination with a wide-variety of connectivity
- Sunlight and weather-resistant jacket keeps networks working in harsh environments

STANDARDS & REGULATIONS

- ANSI/TIA 568.2
- ISO/IEC 11801 Class E
- IEC 61156-5
- EN 50288-6-1
- EN 50173-1
- IEEE 802.3 PoE Type 1, 2, 3, 4 (100 watts max)
- Cisco UPOE, UPOE+ (90 watts max)
- Power over HDBaseT™ PoH (95 watts max)
- RoHS Compliant

PRODUCT SPECIFICATIONS
Stadion Cat 6 OSP Extended Distance Cable



Stadion Cat 6 OSP Extended Distance Cable

CHARACTERISTICS	
Dimensional Characteristics	
Length per reel	500 m
Number of pairs	4
Usage Characteristics	
Category	Cat 6
Fire Safety	Outdoor Rated
Temperature (Storage):	-40 °C to +60 °C (-40 °F to +140 °F)
Temperature (Installation):	-10 °C to +50 °C (+14 °F to +122 °F)
Temperature (Operating):	-40 °C to +60 °C (-40 °F to +140 °F)

HIGH SPEED DATA AND POWER APPLICATIONS	
IEEE 802.3	2.5/5GBASE-T (2.5/5 Gb/s), 1000BASE-T (1 Gb/s), 100BASE-TX (100 Mb/s), 10BASE-T (10 Mb/s)
IEEE 802.3	PoE Types 1, 2, 3, and 4

TECHNICAL SPECIFICATIONS		
Primary Electrical Parameters	Specification	Typical Performance
Conductor loop resistance	Max 19 Ω/100 m	10.2 Ω/100 m
Conductor resistance unbalance	Max. 2 %	0.3 %
Insulation resistance	> 5 GΩ · km	> 5 GΩ · km
Dielectric strength	2500 V DC for 2s	Pass
Secondary Electrical Parameters		
Propagation delay	<537.6 ns/100 m @ 100 MHz	513 ns/100 m @ 100 MHz
Delay skew	Max. 45 ns/100 m @ 100 MHz	10 ns/100 m @ 100 MHz
Mean characteristic impedance	100 Ω ± 5 Ω @ 100 MHz	99 Ω ± 4 Ω @ 100 MHz

PRODUCT SPECIFICATIONS
Stadion Cat 6 OSP Extended Distance Cable



Stadion Cat 6 OSP Extended Distance Cable

PRODUCT PERFORMANCE TRANSMISSION CHARACTERISTICS

Freq.	IL (dB)		NEXT (dB)		PSNEXT (dB)		ACRF (dB)		PSACRF (dB)		RL (dB)	
	Standard	Typical	Standard	Typical	Standard	Typical	Standard	Typical	Standard	Typical	Standard	Typical
1	2.0	1.4	75.3	98.1	72.3	92.2	67.8	96.4	64.8	89.9	20.0	38.0
4	3.8	2.9	66.3	93.6	63.3	87.5	58.0	89.7	55.0	82.4	23.0	42.3
10	6.0	4.5	60.3	87.5	57.3	81.2	50.0	82.0	47.0	74.4	25.0	39.1
20	8.5	6.4	55.8	84.6	52.8	77.8	44.0	75.9	41.0	68.2	25.0	36.5
100	19.8	14.6	45.3	73.5	42.3	67.3	30.0	61.1	27.0	53.9	20.1	36.3
200	29.0	21.1	40.8	67.9	37.8	61.4	24.0	54.9	21.0	47.2	18.0	37.2
250	32.8	23.7	39.3	66.9	36.3	60.2	22.0	52.9	19.0	45.4	17.3	35.7

The standard values shown are the most demanding taken from the relevant IEC, TIA and EN specifications.
 These standard values are the maximum permissible for Insertion loss and the minimum permissible for other parameters

STANDARD PACKAGING SPECIFICATIONS - REELS

Part Number	Packaging Length (m)	Color	Nominal Cable Diameter (mm)	Nominal Cable Weight (kg/km)	Reel Size Flange Dia. x Width (mm)	Gross Weight (kg/Item)	Items Per Pallet
STADION-X-500BK	500	Black	7.62	70kg/km	457 mm x 406 mm	39kg/item	6

For further support information, visit Leviton.com/ns/support

USA
 Network Solutions Headquarters
 +1 (800) 722 2082
 infoUSA@leviton.com
 BERK-TEK™ Cable
 +1 (800) 237 5835 | infoUSA@leviton.com

Asia Pacific
 +852 3620 2602
 infoAPAC@leviton.com

Canada
 +1 (800) 461 2002
 infoCanada@leviton.com

Europe
 +44 (0) 1592 772124
 infoEurope@leviton.com

Latin America
 MX: +52 (55) 2128 6286
 LATAM: +52 (55) 2333 5963
 infoLATAM@leviton.com

Middle East & Africa
 +971 (4) 247 9800
 infoMEA@leviton.com

NETWORK SOLUTIONS PRODUCTS ARE AVAILABLE WORLDWIDE IN OVER 100 COUNTRIES. VISIT US ONLINE AT [LEVITON.COM/NS](http://Leviton.com/ns) TO LEARN MORE.