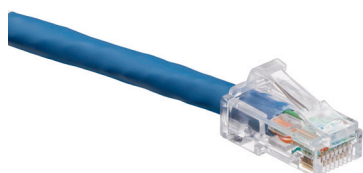


Cat 6 Unshielded Patch Cords

APPLICATION

Leviton Cat 6 Unshielded Patch Cords give optimum performance from your cabling system. The manufactured and tested patch cords offer guaranteed quality and ensure that your system avoids the performance degradation that inferior alternatives will give you at high data rates. The Cat 6 system is classified as Category 6 (Class E) product set that is fully backward compatible with Cat 5e (Class D) products.



SPECIFICATION

Patch cords shall meet or exceed electrical transmission performance requirements of links and channels as described in ANSI/TIA-568.2-D (Cat 6) and ISO/IEC 11801-1 (Class E) and EN 50173-1 (Class E). Patch cords shall be 24-AWG stranded conductor with an 8-position modular plug on each end. The cords shall include a narrow-profile boot that allows for easy cord removal without snagging. The cords shall be available in standard lengths of 0.5, 1, 1.5, 2, 3, and 5 meters. The patch cords shall be available in five standard colors. Patch cord plug contacts shall have industry-standard, ANSI/TIA-1096-A compliant 50 micro inches of gold plating.

COUNTRY OF ORIGIN

China

WARRANTY INFORMATION

For Leviton product warranties, go to Leviton.com/ns/warranty

FEATURES

- Low-profile boots for higher-density blade connectivity
- Designed to have a repeatable, controlled, and consistent assembly ensuring optimum performance
- LSHF/LSZH materials as standard
- Flexible and robust construction
- Compact boot for shorter installed bend radius
- Performance assessed through rigorous quality control in compliance with the demands of industry standards
- 24-AWG patch cords offer guaranteed quality and optimum performance
- Packaged in GREENPACK™ eliminating individual polybags which reducing jobsite waste and single use plastics
- Accept clip-on colored boot markers (PCCLP) for network identification
- Compatible with Leviton Secure RJ system providing physical port security

DESIGN CONSIDERATIONS

- Available in a variety of lengths
- Suitable for connection to servers, blade servers hubs, switches, etc.

FIRE RATING

- IEC 60332-1-2
- IEC 60754-2
- IEC 61034

STANDARDS & REGULATIONS

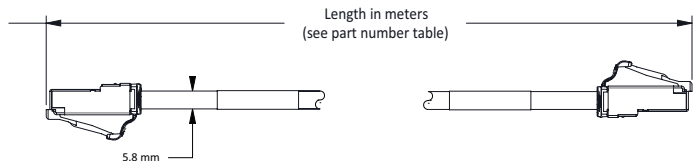
- ANSI/TIA-568.2-D (Cat 6)
- ANSI/TIA-1096-A
- ISO/IEC 11801-1 (Cat 6)
- EN 50173-1 (Cat 6)
- IEC 61935-2
- IEC 60603-7
- IEEE 802.3 PoE Type 1, 2, 3, 4 (100 watts Max)
- Fully supports the safe delivery of power over LAN cabling described by IEEE 802.3 (Type 4) and complies with the unmating under electrical load requirements prescribed by IEC 60512-99-002
- Cisco UPOE, UPOE+ (90 watts Max)
- Power over HDBaseT™ PoH (95 watts Max)
- Maximum cable bundle for 90 watt PoE and above is 17 cords, per ISO IEC TS 29125

PRODUCT SPECIFICATIONS

C6CPCUxxx-yCCBB-Pzz

MECHANICAL SPECIFICATIONS

Dimensions:	Cable OD: 5.8 mm
Materials:	PC UL 94 V-0 rated plastics throughout body Plated phosphor bronze screen
Temp. (Storage):	-20 °C to +70 °C (-4 °F to +158 °F)
Temp. (Installation):	-20 °C to +70 °C (-4 °F to +158 °F)
Temp. (Operating):	0 °C to +50 °C (+32 °F to +122 °F)
Humidity (Max):	93% relative humidity, non-condensing
Voltage Rating:	300V



C6CPCUxxx-yCCBB-Pzz



PART NUMBER		
Description	Weight per item (nom)	Part No.
Cat 6 U/UTP Stranded 4 Pair RJ45 - RJ45 Blade Patch Cord LSF/OH IEC 332.1 Sheathed Cable, 0.5 m, GREENPACK™ of 24 cords	0.025 kg	C6CPCU005-yCCBB-P24
Cat 6 U/UTP Stranded 4 Pair RJ45 - RJ45 Blade Patch Cord LSF/OH IEC 332.1 Sheathed Cable, 1.0 m, GREENPACK of 24 cords	0.039 kg	C6CPCU010-yCCBB-P24
Cat 6 U/UTP Stranded 4 Pair RJ45 - RJ45 Blade Patch Cord LSF/OH IEC 332.1 Sheathed Cable, 1.5 m, GREENPACK of 24 cords	0.057 kg	C6CPCU015-yCCBB-P24
Cat 6 U/UTP Stranded 4 Pair RJ45 - RJ45 Blade Patch Cord LSF/OH IEC 332.1 Sheathed Cable, 2.0 m, GREENPACK of 24 cords	0.075 kg	C6CPCU020-yCCBB-P24
Cat 6 U/UTP Stranded 4 Pair RJ45 - RJ45 Blade Patch Cord LSF/OH IEC 332.1 Sheathed Cable, 3.0 m, GREENPACK of 24 cords	0.110 kg	C6CPCU030-yCCBB-P24
Cat 6 U/UTP Stranded 4 Pair RJ45 - RJ45 Blade Patch Cord LSF/OH IEC 332.1 Sheathed Cable, 5.0 m, GREENPACK of 12 cords	0.180 kg	C6CPCU050-yCCBB-P12

y = Standard range of colors: Red (1), Blue (4), Green (5), Yellow (6), and Gray (8)

C6CPCUxxx-yCCBB-Pzz CAT 6 UNSHIELDED PATCH CORDS PART NUMBER CONFIGURATOR						
C6CPCU (Cord Type)	xxx (Length, Standard)	y (Cable Colors)	C	C	BB (Specialty Tag)	Pzz (Packaging)
<ul style="list-style-type: none"> Unshielded 	<ul style="list-style-type: none"> 010 = 1.0 m 015 = 1.5 m 020 = 2.0 m 030 = 3.0 m 050 = 5.0 m <p>Other lengths available upon request up to 22 m</p>	<p>Cable Color (Standard)</p> <ul style="list-style-type: none"> 1 = Red 4 = Blue 5 = Green 6 = Yellow 8 = Gray <p>Colors (Non-Standard):</p> <ul style="list-style-type: none"> 2 = Black 3 = White 7 = Violet 9 = Orange <p>Non-Standard cable colors are available upon request.</p>	<p>Boot 1 Color:</p> <p>C - Clear</p>	<p>Boot 2 Color:</p> <p>C - Clear</p>	<ul style="list-style-type: none"> BB = Blade H = Halogen Free X = Crossover <p>Cords are halogen-free with stranded copper conductors unless otherwise stated.</p>	<ul style="list-style-type: none"> 24 = GREENPACK of 24 cords 12 = GREENPACK of 12 cords



For further support information, visit Leviton.com/ns/support

<p>USA Network Solutions Headquarters +1 (800) 722 2082 infoUSA@leviton.com</p> <p>Leviton Cable (formerly Berk-Tek) +1 (800) 237 5835 infoUSA@leviton.com</p>	<p>Asia Pacific +852 3620 2602 infoAPAC@leviton.com</p>	<p>Canada +1 (800) 461 2002 infoCanada@leviton.com</p>	<p>Europe +44 (0) 1592 772124 infoEurope@leviton.com</p>	<p>Latin America MX: +52 (55) 2128 6286 LATAM: +52 (55) 2333 5963 infoLATAM@leviton.com</p>	<p>Middle East & Africa +971 (4) 247 9800 infoMEA@leviton.com</p>
---	--	---	---	--	--

NETWORK SOLUTIONS PRODUCTS ARE AVAILABLE WORLDWIDE IN OVER 100 COUNTRIES. VISIT US ONLINE AT [LEVITON.COM/NS](http://Leviton.com/ns) TO LEARN MORE.