

Fiber Raceway Reducers

Fiber Raceway Reducers

APPLICATION

Reducers are used to join together ducting and components of varying sizes or to adjust the duct size to meet changing fiber capacity needs.

FEATURES

- Available in four sizes
 - 2" x 4"
 - 4" x 4"
 - 4" x 8"
 - 4" x 12"
- Available with or without covers
- 4" x 8" Reducer offered in a right hand or left hand orientation

STANDARDS COMPLIANCE

UL 94 V-0 Material Rating for Flammability

Meets NEBS GR-63-CORE*

UL 2024A Optical Fiber Raceway, Riser Rated

PHYSICAL SPECIFICATIONS

Color: See page two

Material: Noryl Plastic

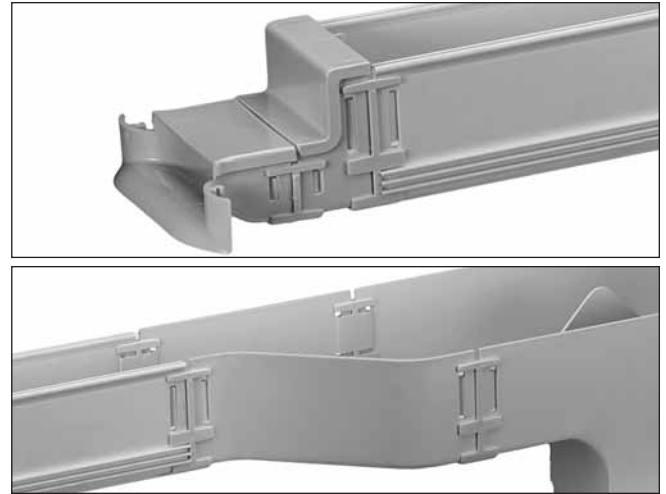
Dimensions: See page two

DESIGN CONSIDERATIONS

- Manufactured of a fire retardant plastic that is halogen free.
- Use to interface fiber raceway systems of various sizes.
- May be utilized to store and route copper cable in an indoor environment. It is recommended that fiber and copper be stored in separate systems.
- The 4" x 12" component does not contain end slots and should be used in conjunction with the Slotless Joiner. If end slots are added with the End Slot Tool, then the "universal" Joiner may also be used.

WARRANTY INFORMATION

For a copy of Leviton product warranties, visit www.leviton.com.



TYPICAL SPECIFICATION

Reducers shall join together ducting and components of varying sizes or to adjust the duct size to meet changing fiber capacity needs. Reducers shall route, manage and support fiber optic cables, in addition to protecting fiber and helping to maintain proper bend radius. Reducers shall be UL rated and manufactured of fire retardant materials.

ELECTRONIC FILES

For CAD files, Typical Specs, or Dimensional Line Art (.DXF, .DWG, MS-DOS.eps or .TXT), log on to www.leviton.com.

*Testing conducted by an accredited third party

For Technical Support Call 1-425-485-4288; in USA call 1-800-824-3005.
Spec sheets and updates are also available at www.leviton.com.

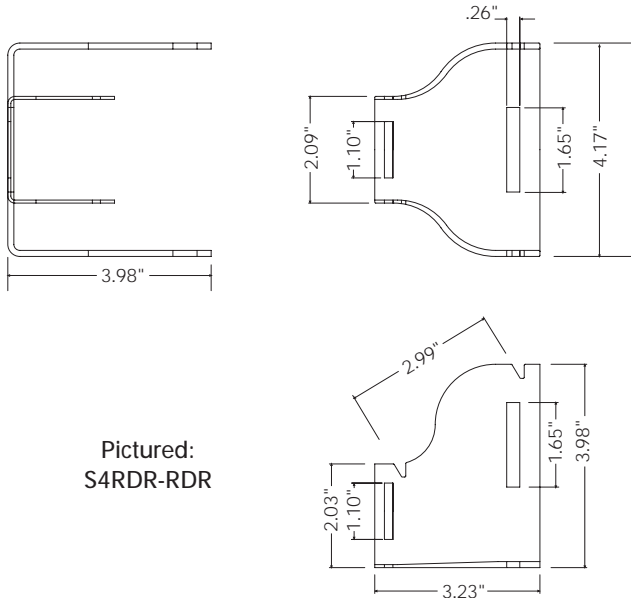
2222 – 222nd St. SE • Bothell, WA 98021 USA
Tel: 1-800-722-2082 / 1-425-485-4288 • Fax: 1-425-483-5270 • Int'l Fax: 1-425-485-9170 • GSA Schedule Available.

Fiber Raceway Reducers

Part Number
SXRDR-RXX

DIMENSIONAL LINE ART

For Dimensional Line Art (.DXF, .DWG, MS-DOS.eps or .TXT), log on to www.leviton.com.



Pictured:
S4RDR-RDR

REDUCERS	
Description	2" x 4"
Reducer to 2" x 2"	SLRDR-RDR
Reducer to 2" x 2" & Cover	SLRDR-RDC
Description	4" X 4"
Reducer to 2" x 2"	S4RDR-RDR
Reducer to 2" x 2" & Cover	S4RDR-RDC
Reducer to 2" x 4"	S4RDR-RDL
Reducer to 2" x 4" & Cover	S4RDR-RLC
Description	4" X 8"
Reducer to 4" x 4"	S8RDR-RDC
Reducer to 4" x 4" Right Hand	S8RDR-RRH
Reducer to 4" x 4" Right Hand & Cover	S8RDR-RHC
Reducer to 4" x 4" Left Hand	S8RDR-RLH
Reducer to 4" x 4" Left Hand & Cover	S8RDR-LHC
Description	4" X 12"
Reducer to 4" x 8"	SWRDR-RDR
Reducer to 4" x 8" & Cover	SWRDR-RDC

ACCESSORIES

JOINERS					
Description	2" x 2"	2" x 4"	4" X 4"	4" x 8"	4" x 12"
Joiner	S2JNR-SLT	SLJNR-SLT	S4JNR-SLT	S8JNR-SLT	
Slotless Joiner			S4JNR-SLS	S8JNR-SLS	SWJNR-SLS
DUCTING					
Description	2" x 2"	2" x 4"	4" X 4"	4" x 8"	4" x 12"
Solid Duct	S2DCT-SDT	SLDCT-SDT	S4DCT-SDT	S8DCT-SDT	SWDCT-SDT
Solid Duct & Cover	S2DCT-SDC	SLDCT-SDC	S4DCT-SDC	S8DCT-SDC	SWDCT-SDC
Solid Duct & Hinged Cover	S2DCT-DHC	SLDCT-DHC	S4DCT-DHC	S8DCT-DHC	
Slotted Duct	S2DCT-DSL		S4DCT-DSL		
Slotted Duct & Cover	S2DCT-DCS		S4DCT-DCS		
Slotted Duct & Hinged Cover			S4DCT-SHC		
BULK PACK DUCTING					
Description	2" x 2" (5 per carton)	2" x 4" (5 per carton)	4" x 4" (4 per carton)	4" x 8" (4 per carton)	4" x 12" (4 per carton)
Solid Duct	S2DCT-5DT	SLDCT-5DT	S4DCT-4DT	S8DCT-4DT	SWDCT-4DT
Solid Duct & Cover	S2DCT-5DC	SLDCT-5DC	S4DCT-4DC	S8DCT-4DC	SWDCT-4DC
Solid Duct & Hinged Cover	S2DCT-5HC	SLDCT-5HC	S4DCT-4HC	S8DCT-4HC	
Slotted Duct	S2DCT-5SL		S4DCT-4SL		
Slotted Duct & Cover	S2DCT-5CS		S4DCT-4CS		
Slotted Duct & Hinged Cover			S4DCT-SH4		

NOTE: Dimensions are listed as height x width. All measurements reflect an approximate conversion from the Metric system.

NOTE: Standard color is yellow. For other colors, replace "S" as the first letter of the part number with O (orange), E, (black), or G (grey). Please contact customer service for pricing and availability of non-standard colors.



For Technical Support Call 1-425-485-4288; in USA call 1-800-824-3005.
Spec sheets and updates are also available at www.leviton.com.

2222 - 222nd St. SE • Bothell, WA 98021 USA • Tel: 1-800-722-2082 / 1-425-485-4288 • Fax: 1-425-483-5270 • Int'l Fax: 1-425-485-9170 • GSA Schedule Available.