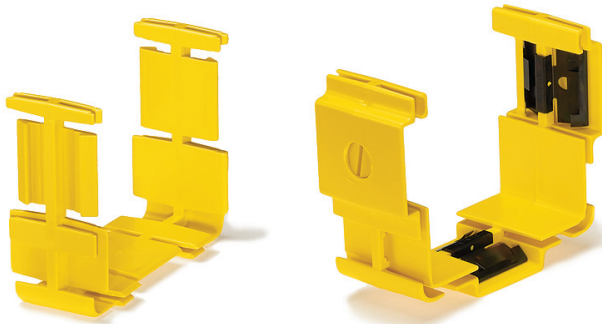


Fiber Raceway Joiners and Slotless Joiners

APPLICATION

Joiners and Slotless Joiners provide a means to connect all Fiber Raceway components to each other and/or ducting. Slotless Joiners are universal and will join the ducting with or without end slots. Regular Joiners are tool-free on assembly when used to connect components and ducting with end slots.



SPECIFICATION

Joiners and Slotless Joiners shall be used to connect raceway and components. Slotless Joiners shall connect raceway ducting with or without end slots. Regular joiners shall be used to snap together all components and ducting with end slots without the use of tools. Components shall be UL listed and manufactured of fire retardant materials.

FEATURES

- Available in four sizes
 - 2" x 2"
 - 4" x 4"
 - 4" x 8"
 - 4" x 12"
- Creates a smooth and firm connection between ducting and components
- Joiners require slotting tools when used with ducting where the end slots have been removed. No tools are needed to attach ducting with end slots
- Slotless Joiners are universal and lock tightly into place with any flathead screwdriver
- Available in yellow, orange, black, and grey

DESIGN CONSIDERATIONS

- Manufactured of a fire retardant plastic that is halogen free and low smoke
- May be utilized in a system containing copper cable. It is recommended that fiber and copper be stored in separate systems
- Joiners are tool-free
- Designed to work with ducting and components with end slots
- Slotless Joiners are "universal"
- Connects ducting that has been cut down to size where end slots have been removed

STANDARDS COMPLIANCE

UL 94V-0 Material Rating for Flammability
Meets NEBS GR-63-CORE*
UL 2024A Optical Fiber Raceway, Riser Rated

PHYSICAL SPECIFICATIONS

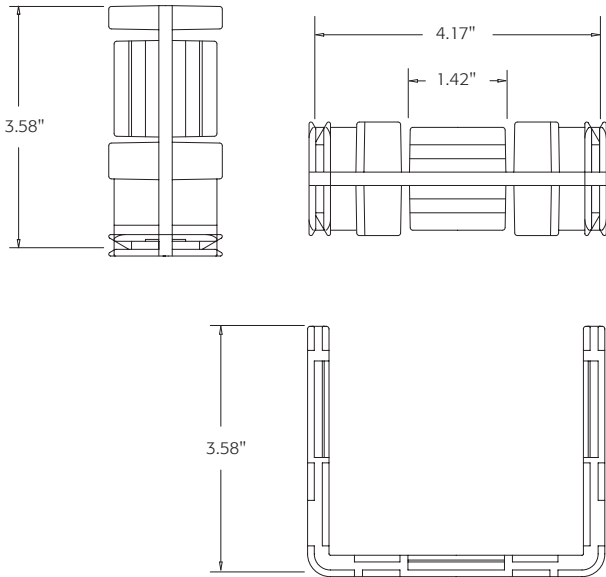
Dimensions: See page two
Materials: Noryl Plastic
Color: See page two

WARRANTY INFORMATION

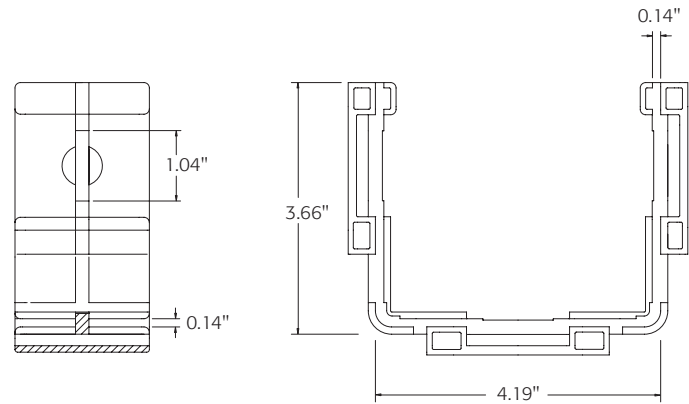
For a copy of Leviton product warranties, visit www.leviton.com.

ELECTRONIC FILES

For CAD files, typical specs, or technical drawings (.DXF, .DWG, VISIO), visit www.leviton.com



Pictured: Joiner



Pictured: Slotless Joiner

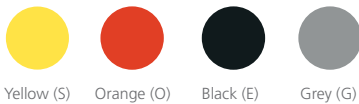
XXJNR-SLX

PART NUMBERS

| Description | Part No. |
|--------------------------|-----------|
| Joiner 2" x 2" | S2JNR-SLT |
| Joiner 4" x 4" | *4JNR-SLT |
| Joiner 4" x 8" | S8JNR-SLT |
| Slotless Joiner 4" x 4" | *4JNR-SLS |
| Slotless Joiner 4" x 8" | S8JNR-SLS |
| Slotless Joiner 4" x 12" | SWJNR-SLS |

Dimensions listed as H x W.

* = Color: Choose from any of the colors below. Grey is special order and requires additional lead time.



Contact inside sales at 800.722.2082 to order.
Callers from outside the U.S. and Canada please dial 1.425.486.2222

ACCESSORIES

| Description | Part No. |
|--|-----------|
| 2" End Slot Tool (for use with 2" x 2" Joiners) | SSLOT-050 |
| 4" x 8" End Slot Tool (for use with 4" x 4" and 4" x 8" Joiners) | SSLOT-200 |