

Fiber Raceway End Caps

APPLICATION

End Caps are designed to seal the open end of fiber raceway ducting or components and are removable should the system need expansion at a later time.



SPECIFICATION

Raceway end caps shall seal the open end of ducting and components. End Caps with knock-out holes shall allow tubing to be extended from the sealed end of the ducting. End Caps shall also be removable should the system need expansion at a later time. Components shall be UL listed and manufactured of fire retardant materials.

FEATURES

- Available in four sizes
 - 2" x 2"
 - 4" x 4"
 - 4" x 8"
 - 4" x 12"
- Seals end of duct to protect fiber from environmental factors such as dust or debris
- Removable for future system extension
- Slotless End Caps must be used in conjunction with slotless joiners. All other End Caps snap into place without the aid of tools or connecting joiners
- End Caps with knock-out holes allow tubing to be extended from the sealed end of ducting or other components
- Available in yellow, orange, black and grey

DESIGN CONSIDERATIONS

- Manufactured of a fire retardant plastic that is halogen free and low smoke
- End Caps with knock-out holes can be used with tubing to create sealed drop down points
- May be utilized in a system containing copper cable. It is recommended that fiber and copper be stored in separate systems

STANDARDS COMPLIANCE

UL 94V-0 Material Rating for Flammability
Meets NEBS GR-63-CORE*
UL 2024A Optical Fiber Raceway, Riser Rated

PHYSICAL SPECIFICATIONS

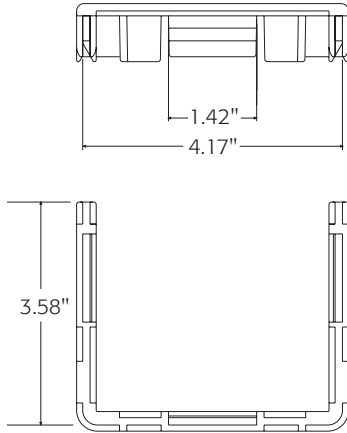
Dimensions: See page two
Materials: Noryl Plastics
Color: See page two

WARRANTY INFORMATION

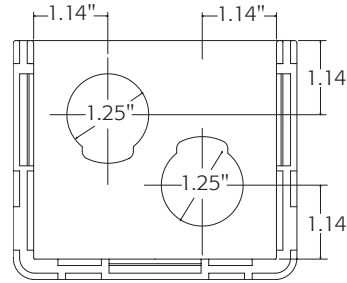
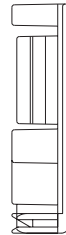
For a copy of Leviton product warranties, visit www.leviton.com.

ELECTRONIC FILES

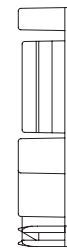
For CAD files, typical specs, or technical drawings (.DXF, .DWG, VISIO), visit www.leviton.com.



Pictured: *4END-CAP



Pictured: *4END-32D



XXEND-XXX

END CAPS

Description	2" x 2"	4" x 4"	4" x 8"	4" x 12"
Standard		*4END-CAP	*8END-CAP	
Slotless		*4END-CSL	*8END-CSL	*WEND-CSL
Two 0.75" diameter knockouts	S2END-20D			
One 1.5" diameter knockout	S2END-38D			
One 1.5" Hole	S2END-38H			
End Cap Tube Outlet for 2" Tube	S2END-OUT			
End Cap, Two 1.75" diameter knockouts		*4END-46D		
End Cap, Two 1.25" diameter knockouts		*4END-32D		

Dimensions listed as H x W.

* = Color: Choose from any of the colors below. Grey is special order and requires additional lead time. 2" x 2" offered in yellow only.



Yellow (S) Orange (O) Black (E) Grey (G)

Contact inside sales at 800.722.2082 to order.
Callers from outside the U.S. and Canada please dial 1.425.486.2222

ACCESSORIES:

TUBING

Description	Part No.
Round, 2" diameter, 39" length (yellow)	S50RT-01M
Round, 2" diameter, 78" length (yellow)	S50RT-02M
Round, 1" diameter, 78" length (grey)	S25RT-02M
Round, 1.5" diameter, 78" length (black)	S38RT-02M
Round, split, .75" diameter, 78" length (grey)	S20RS-02M
Square, 2", 14" length (yellow)	S50ST-350
Square w/cover, 2", 14" length (yellow)	S5STC-350
Square, 1.25", 14" length (yellow)	S30ST-350

SLOTLESS JOINERS

Description	4" x 4"	4" x 8"	4" x 12"
Slotless Joiner	*4JNR-SLS	S8JNR-SLS	SWJNR-SLS

Dimensions listed as H x W.

* = Color: Choose from any of the colors below. Grey is special order and requires additional lead time. 2" x 2" offered in yellow only.



Yellow (S) Orange (O) Black (E) Grey (G)

Contact inside sales at 800.722.2082 to order.

Callers from outside the U.S. and Canada please dial 1.425.486.2222