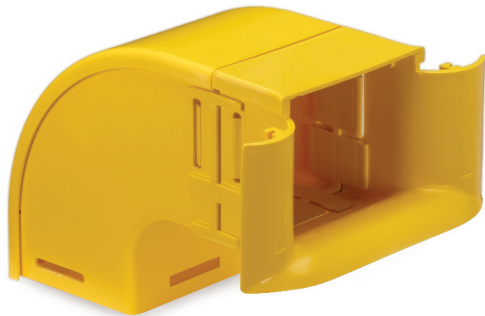


Fiber Raceway Side Drop-Off Kits

APPLICATION

Fiber Raceway Side Drop-Off Kits provide a safe exit for fiber at any point along the ducting in order to drop down to active equipment or work areas. Side drop-off kits can be inserted into the side of the solid ducting or Outlet Trumpets may be attached at the open end.



SPECIFICATION

Fiber Raceway Side Drop-Off Kits shall provide a safe exit at any point along the solid ducting for fiber to drop down to active equipment or other work areas. Side drop-off kits shall protect fiber and maintain proper bend radius. Components shall be UL listed and manufactured of fire-retardant materials.

FEATURES

- Available in two sizes
 - 2" x 2"
 - 4" x 4"
 - Inserts into the side of the duct for a rigid connection
 - Drops can be added to existing installations at any point along the side walls or open end of the ducting
 - Select components available in yellow, orange, black, and grey
- Accessories:
- Tubing can be attached to Fiber Raceway Side Drop-Off Kits to safely enclose and route fiber as it exits the duct
 - Ramp up available for 2" x 2" kits to separate and guide the fiber away from the ducting towards the drop-off point
 - Side Cut-Out Tool Kit available to prepare the duct for the connection of the side drop-off kit (Side Cut-Out Tool required to install drop)

DESIGN CONSIDERATIONS

- Manufactured of a fire-retardant plastic that is halogen free and low smoke
- May be utilized to store and route copper cable in an indoor environment. It is recommended that fiber and copper be stored in separate systems
- Provides an entrance or exit point for fiber along the ducting in order to drop down to active equipment or work areas

STANDARDS COMPLIANCE

- UL 94V-0 Material Rating for Flammability
- Meets NEBS GR-63-CORE*
- UL 2024A Optical Fiber Raceway, Riser Rated

PHYSICAL SPECIFICATIONS

Dimensions: See page two
Materials: Noryl Plastics
Color: See page two

WARRANTY INFORMATION

For a copy of Leviton product warranties, visit www.leviton.com/warranty.

Leviton Network Solutions

2222 - 222nd St. SE
Bothell, WA 98021-4416

tel 1-800-824-3005
tel +1-425-486-2222
appeng@leviton.com
www.leviton.com

Asia / Pacific

T +1.631.812.6228
E infoasean@leviton.com

Europe

T +44.0.1592.772124
E customerservice@brand-rex.com

Canada

T +1.514.954.1840
E pcservice@leviton.com

India / SAARC

T +971.4.886.4722
E infoindia@leviton.com

Caribbean

T +1.954.593.1896
E infocaribbean@leviton.com

Mexico

T +52.55.5082.1040
E lsamarketing@leviton.com

China

T +852.2774.9876
E infochina@leviton.com

Middle East & Africa

T +971.4.886.4722
E lmeinfo@leviton.com

Colombia

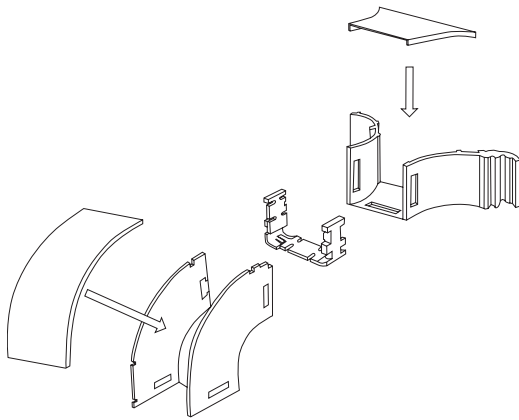
T +57.1.743.6045
E infocolombia@leviton.com

South Korea

T +82.2.3273.9963
E infokorea@leviton.com

ELECTRONIC FILES

For CAD files, typical specs, or technical drawings (.DXF, .DWG), visit www.leviton.com.



xxDRP-xxx, xxTRM-TRM

SIDE DROP OFF KITS

Description	2" x 2"	4" x 4"	4" x 8"	4" x 12"
Side Drop-Off Kit (for Duct Raceway)	S2DRP-DCT	*4DRP-DRP		
Side Drop-Off Kit (for Round Tube)	S2DRP-TUB			
Side Drop-Off Kit (for Square Tube)	S2DRP-STB			
Outlet Trumpet	S2TRM-TRM	*4TRM-TRM		

JOINERS

Description	2" x 2"	4" x 4"	4" x 8"	4" x 12"
Joiner	S2JNR-SLT	*8JNR-SLT	*4JNR-SLT	
Slotless Joiner		*4JNR-SLS	S8JNR-SLS	SWJNR-SLS

DUCTING

Description	2" x 2"	4" x 4"	4" x 8"	4" x 12"
Solid Duct	S2DCT-SDT	*4DCT-SDT	*8DCT-SDT	*WDCT-SDT
Solid Duct and Cover	S2DCT-SDC	*4DCT-SDC	*8DCT-SDC	*WDCT-SDC
Slotted Duct	S2DCT-DSL	*4DCT-DSL		
Solid Duct and Hinged Cover†	S2DCT-DHC	*4DCT-DHC	*8DCT-DHC	
Slotted Duct and Cover	S2DCT-DCS	*4DCT-DCS		
Slotted Duct and Hinged Cover†		*4DCT-SHC		

Dimensions listed as H x W.

† 2" x 2" Hinged cover is in 8" sections only.

2" x 4" and 2" x 8" components available by special order.

* = Color: Choose from any of the colors below. Grey is special order and requires additional lead time. 2" x 2" offered in yellow only.



Yellow (S) Orange (O) Black (E) Grey (G)

Contact inside sales at 800.722.2082 to order. Callers from outside the U.S. and Canada please dial 1.425.486.2222.

Page 2 of 3

Leviton Network Solutions 2222 - 222nd St. SE Bothell, WA 98021-4416	Asia / Pacific T +1.631.812.6228 E infoasean@leviton.com	Canada T +1.514.954.1840 E pcservice@leviton.com	Caribbean T +1.954.593.1896 E infocaribbean@leviton.com	China T +852.2774.9876 E infochina@leviton.com	Colombia T +57.1.743.6045 E infocolombia@leviton.com
tel 1-800-824-3005 tel +1-425-486-2222 appeng@leviton.com www.leviton.com	Europe T +44.0.1592.772124 E customerservice@brand-rex.com	India / SAARC T +971.4.886.4722 E infoindia@leviton.com	Mexico T +52.55.5082.1040 E lsamarketing@leviton.com	Middle East & Africa T +971.4.886.4722 E lmeinfo@leviton.com	South Korea T +82.2.3273.9963 E infokorea@leviton.com

BULK PACK DUCTING

Description	2" x 2" (5 per carton)	4" x 4" (4 per carton)	4" x 8" (4 per carton)	4" x 12" (4 per carton)
Solid Duct	S2DCT-5DT	*4DCT-4DT	*8DCT-4DT	*WDCT-4DT
Solid Duct and Cover	S2DCT-5DC	*4DCT-4DC	*8DCT-4DC	*WDCT-4DC
Solid Duct and Hinged Cover	S2DCT-5HC	*4DCT-4HC	*8DCT-4HC	
Slotted Duct	S2DCT-5SL	*4DCT-4SL		
Slotted Duct and Cover	S2DCT-5CS	*4DCT-4CS		
Slotted Duct and Hinged Cover		*4DCT-SH4		

Dimensions listed as H x W.

2" x 4" and 2" x 8" components available by special order.

* = Color: Choose from any of the colors below. Grey is special order and requires additional lead time. 2" x 2" offered in yellow only.



Yellow (S) Orange (O) Black (E) Grey (G)

Contact inside sales at 800.722.2082 to order. Callers from outside the U.S. and Canada please dial 1.425.486.2222

TUBING

Description	Part No.
Round, 2" diameter, 39" length (yellow)	S50RT-01M
Round, 2" diameter, 78" length (yellow)	S50RT-02M
Round, 1" diameter, 78" length (grey)	S25RT-02M
Round, 1.5" diameter, 78" length (black)	S38RT-02M
Round, split, .75" diameter, 78" Length (grey)	S20RS-02M
Square, 2", 14" length (yellow)	S50ST-350
Square w/ cover, 2", 14" length (yellow)	S5STC-350
Square, 1.25", 14" length (yellow)	S30ST-350

TOOLS

Description	Part No.
Mitre Box (for 1.25" and 2" Ducting)*	SMTRE-050
Mitre Box (for 4", 8" and 12" Ducting)*	SMTRE-300
2" Side Cut-Out Tool Kit (for use with 2" x 2" Side Drop-Off Kits)**	S2CUT-TOL
4" Side Cut-Out Tool Kit (for use with 2" x 4" and 4" x 4" Side Drop-Off Kits)**	S4CUT-TOL
2" End Slot Tool (for use with 2" x 2" Joiners)	SSLOT-050
4" x 8" End Slot Tool (for use with 4" x 4" and 4" x 8" Joiners)	SSLOT-200

* = Ducting and saw not included.

** = Ratchet and socket not included.

Contact inside sales at 1.800.722.2082 to order. Callers from outside the US and Canada please dial +1.425.486.2222.

Leviton Network Solutions 2222 - 222nd St. SE Bothell, WA 98021-4416	Asia / Pacific T +1.631.812.6228 E infoasean@leviton.com	Canada T +1.514.954.1840 E pcservice@leviton.com	Caribbean T +1.954.593.1896 E infocaribbean@leviton.com	China T +852.2774.9876 E infochina@leviton.com	Colombia T +57.1.743.6045 E infocolombia@leviton.com
tel 1-800-824-3005 tel +1-425-486-2222 appeng@leviton.com www.leviton.com	Europe T +44.0.1592.772124 E customerservice@brand-rex.com	India / SAARC T +971.4.886.4722 E infoindia@leviton.com	Mexico T +52.55.5082.1040 E lsamarketing@leviton.com	Middle East & Africa T +971.4.886.4722 E lmeinfo@leviton.com	South Korea T +82.2.3273.9963 E infokorea@leviton.com