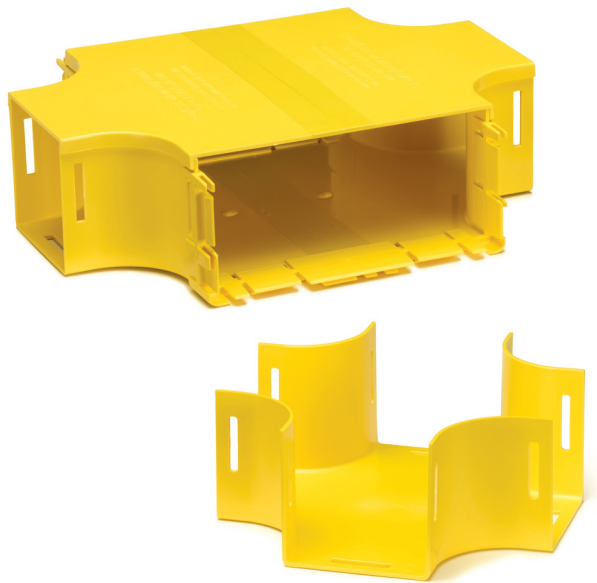


## Fiber Raceway Horizontal Crosses

### APPLICATION

Horizontal Crosses provide an intersection in the ducting system and enable the fiber path to be routed in various directions.



### SPECIFICATION

Horizontal Crosses shall provide an intersection in the ducting system, enabling the fiber path to be routed in multiple directions. Horizontal crosses shall protect fiber and help maintain proper bend radius. Components shall be UL listed and manufactured of fire retardant materials.

### FEATURES

- Available in four sizes
  - 2" x 2"
  - 4" x 4"
  - 4" x 8"
  - 4" x 12"
- Extends the duct route in various directions
- Channels are curved to maintain bend radius control as fiber is redirected
- Available with or without covers
- Available in yellow, orange, black, and grey

### DESIGN CONSIDERATIONS

- Manufactured of a fire retardant plastic that is halogen free and low smoke
- May be utilized to store and route copper cable in an indoor environment. It is recommended that fiber and copper be stored in separate systems
- The 4" x 12" component does not contain end slots and should be used in conjunction with the Slotless Joiner

### STANDARDS COMPLIANCE

UL 94V-0 Material Rating for Flammability  
Meets NEBS GR-63-CORE\*  
UL 2024A Optical Fiber Raceway, Riser Rated

### PHYSICAL SPECIFICATIONS

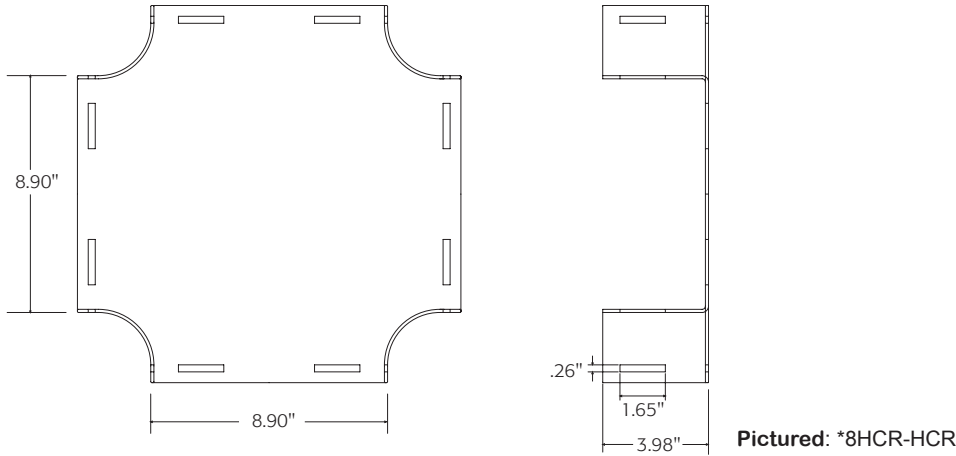
Dimensions: See page two  
Materials: Noryl Plastic  
Color: See page two

### WARRANTY INFORMATION

For a copy of Leviton product warranties, visit [www.leviton.com](http://www.leviton.com).

**ELECTRONIC FILES**

For CAD files, typical specs, or technical drawings (.DXF, .DWG, VISIO), visit [www.leviton.com](http://www.leviton.com).



XXHCR-HCX

**HORIZONTAL CROSSES**

Description	2" x 2"	4" x 4"	4" x 8"	4" x 12"
Horizontal Cross	S2HCR-HCR	*4HCR-HCR	*8HCR-HCR	*WHCR-HCR
Horizontal Cross & Cover	S2HCR-HCC	*4HCR-HCC	*8HCR-HCC	*WHCR-HCC

**ACCESSORIES:**

**JOINERS**

Description	2" x 2"	4" x 4"	4" x 8"	4" x 12"
Joiner	S2JNR-SLT	*4JNR-SLT	S8JNR-SLT	
Slotless Joiner		*4JNR-SLS	S8JNR-SLS	SWJNR-SLS

Dimensions listed as H x W.

2" x 4" and 2" x 8" components available by special order

\* = Color: Choose from any of the colors below. Grey is special order and requires additional lead time. 2" x 2" offered in yellow only.



Yellow (S)   Orange (O)   Black (E)   Grey (G)

Contact inside sales at 800.722.2082 to order. Callers from outside the U.S. and Canada please dial 1.425.486.2222