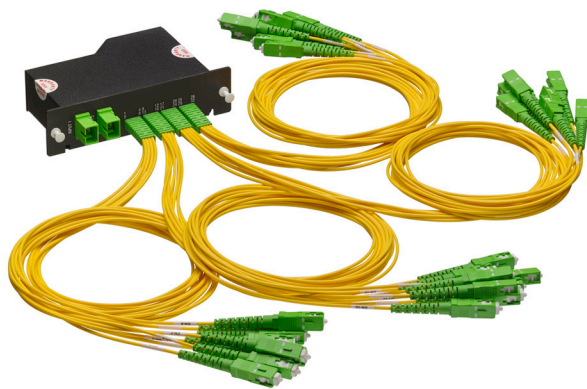


SDX GPON Splitter Module

APPLICATION

The high-performance SDX GPON Splitter Module permits low optical loss for passive optical network layouts. The PLC-based splitter design is available in multiple configurations to support medium- and high-density networks for the enterprise space. The SDX module fits in the full line of Leviton SDX enclosures, making it versatile for different types of deployments.



SPECIFICATION

Splitter modules shall meet ITU-T G.671 requirements for optical performance. Modules shall be pre-terminated and pre-tested with test documentation included with each cassette. The insertion loss shall include the GR-326 compliant SC/APC connector attached to the cable lead attached to the module. The module should universally mount into rack-mount, wall-mount, ceiling-mount, or floor-mount enclosures to support easy deployment in a multitude of applications. The splitter shall meet the requirements of GR-1209 and GR-1221.

COUNTRY OF ORIGIN

China

WARRANTY INFORMATION

For a copy of Leviton product warranties, visit www.leviton.com/warranty.

FEATURES

- Low insertion loss improves network performance and layout design flexibility
- Snap-in design for easy installation
- Module includes SC/APC connector on fiber lead

DESIGN CONSIDERATIONS

- SDX module fits SDX wall- and rack-mount enclosures
- Connector type: SC/APC

STANDARDS COMPLIANCE

Meets the following standards:

- Splitter meets GR1209 and GR1221 specifications
- Fiber type: G.657A1
- Connectors meet GR326 specifications
- ITU-T G.6761 Transmission Characteristics of Optical Components
- ITU-T G.984 Passive Optical Networks

PHYSICAL SPECIFICATIONS

Dimensions: See page two

Materials: Powder-coated steel

OPTICAL SPECIFICATIONS

Properties

| | |
|-----------------------|------------------|
| Operating Wavelength | 1260nm - 1650 nm |
| PDL | 0.3dB |
| Directivity | ≥ 60dB |
| Return Loss | ≥ 55dB |
| Maximum Optical Power | 300mW |
| Operating Temperature | -40°C to 85°C |
| Storage Temperature | -40°C to 85°C |

| Splitter | Insertion Loss | IL Uniformity |
|----------|----------------|---------------|
| 1 x 16 | 13.5dB | 1.0dB |
| 2 x 16 | 14.7dB | 2.0dB |
| 1 x 32 | 16.7dB | 1.3dB |
| 2 x 32 | 17.5dB | 1.6dB |

*Insertion loss includes connectors and fiber pigtail.

Leviton Network Solutions

2222 - 222nd St. SE
Bothell, WA 98021-4416

tel 1-800-824-3005
tel +1-425-486-2222
appeng@leviton.com
www.leviton.com

Asia / Pacific

T +1.631.812.6228
E infoasean@leviton.com

Europe

T +33.6.8869.1380
E infoeurope@leviton.com

Canada

T +1.514.954.1840
E pcservice@leviton.com

India / SAARC

T +971.4.886.4722
E infoindia@leviton.com

Caribbean

T +1.954.593.1896
E infocaribbean@leviton.com

Mexico

T +52.55.5082.1040
E lsamarketing@leviton.com

China

T +852.2774.9876
E infochina@leviton.com

Middle East & Africa

T +971.4.886.4722
E lmeinfo@leviton.com

Colombia

T +57.1.743.6045
E infocolombia@leviton.com

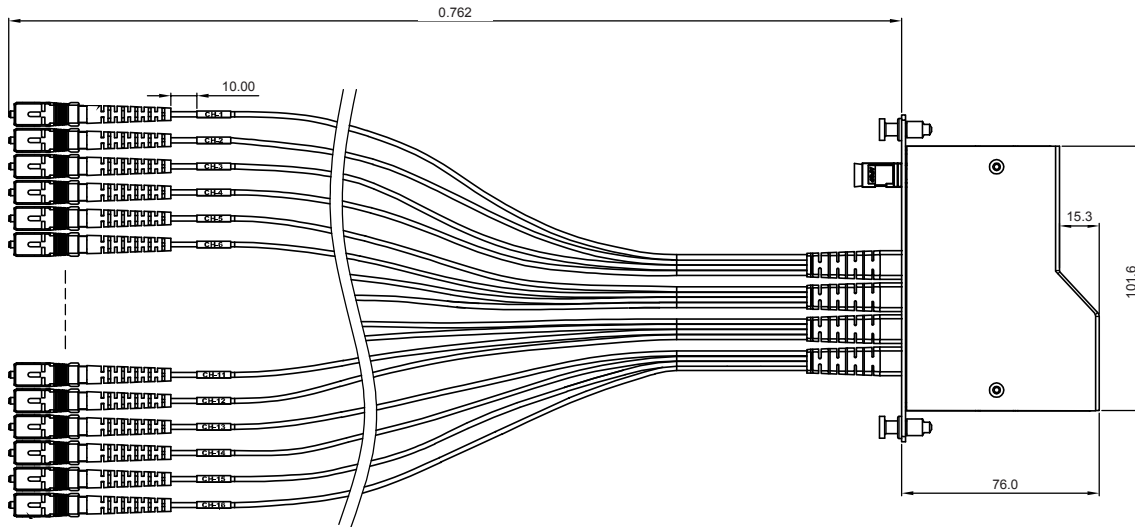
South Korea

T +82.2.3273.9963
E infokorea@leviton.com

ELECTRONIC FILES

For CAD files, typical specs, or technical drawings (.DXF, .DWG), visit www.leviton.com.

[mm]



PLCxx-003

SDX GPON SPLITTER MODULES

| Description | Part No. |
|------------------------------|-----------|
| 1 x 16, SC/APC, 2.5-foot leg | PLC16-003 |
| 2 x 16, SC/APC, 2.5-foot leg | PLC26-003 |
| 1 x 32, SC/APC, 2.5-foot leg | PLC12-003 |
| 2 x 32, SC/APC, 2.5-foot leg | PLC22-003 |

Leviton Network Solutions
 2222 - 222nd St. SE
 Bothell, WA 98021-4416

Asia / Pacific
 T +1.631.812.6228
 E infoasean@leviton.com

Canada
 T +1.514.954.1840
 E pcservice@leviton.com

Caribbean
 T +1.954.593.1896
 E infocaribbean@leviton.com

China
 T +852.2774.9876
 E infochina@leviton.com

Colombia
 T +57.1.743.6045
 E infocolombia@leviton.com

tel 1-800-824-3005
 tel +1-425-486-2222
 appeng@leviton.com
 www.leviton.com

Europe
 T +33.6.8869.1380
 E infoeurope@leviton.com

India / SAARC
 T +971.4.886.4722
 E infoindia@leviton.com

Mexico
 T +52.55.5082.1040
 E lsamarketing@leviton.com

Middle East & Africa
 T +971.4.886.4722
 E lmeinfo@leviton.com

South Korea
 T +82.2.3273.9963
 E infokorea@leviton.com