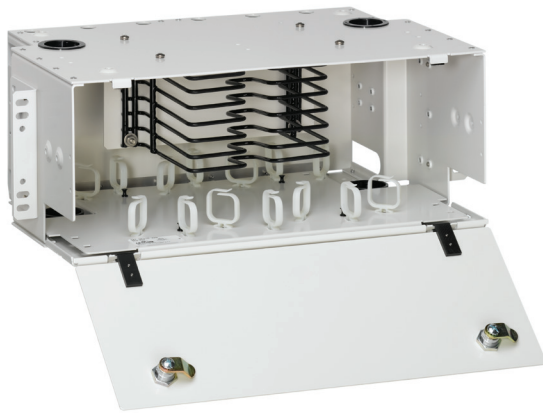


LightSpace™ DPS Series Optical Splice Enclosures

APPLICATION

LightSpace DPS Series Optical Splice Enclosures are designed to protect, manage, and organize fiber splices in a rack-mount environment. LGX® compatibility allows users to fill and expand legacy systems. All enclosures feature a unique tray holder that allows users to select from a variety of splice tray styles, including 12- and 24-fiber versions. Units can be purchased separately or in combination.



SPECIFICATION

Optical Splice Enclosures shall protect, manage, and organize fiber splices in a rack-mount environment. Enclosures shall be LGX compatible and shall include locking options for increased security.

FEATURES

- Accepts Leviton standard splice trays
- 19-inch and 23-inch rack mounting
- Constructed of high-strength aluminum
- Removable hinged front door and hinged rear door
- Large cable management rings for enhanced jumper routing
- Metal door for added security
- Key lock option for restricted access
- Stackable for custom applications
- Cable clamp kits for additional cable strain relief
- Grounding kit available

DESIGN CONSIDERATIONS

- Use to protect, manage and organize fiber terminations and splices in a rack-mount environment
- LGX compatible
- Bend Radius Bracket not included with product

STANDARDS COMPLIANCE

NEBS GR-63

PHYSICAL SPECIFICATIONS

Dimensions: See page two

COUNTRY OF ORIGIN

USA

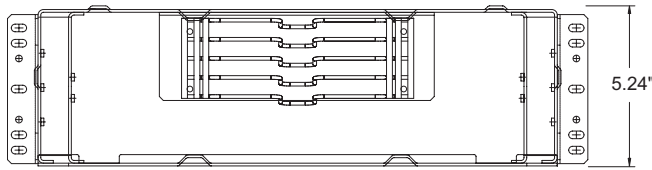
WARRANTY INFORMATION

For a copy of Leviton product warranties, visit www.leviton.com/warranty.

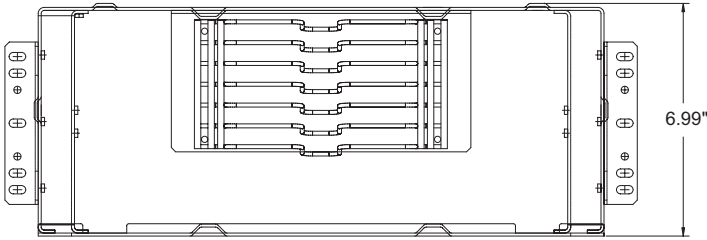
ELECTRONIC FILES

For CAD files, typical specs, or technical drawings (.DXF, .DWG), visit www.leviton.com.

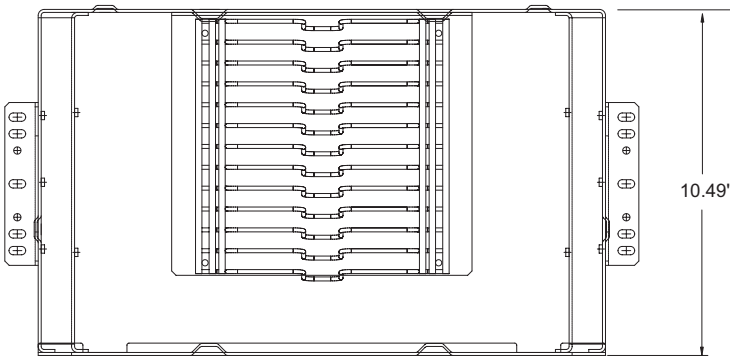
DPSxU-STD



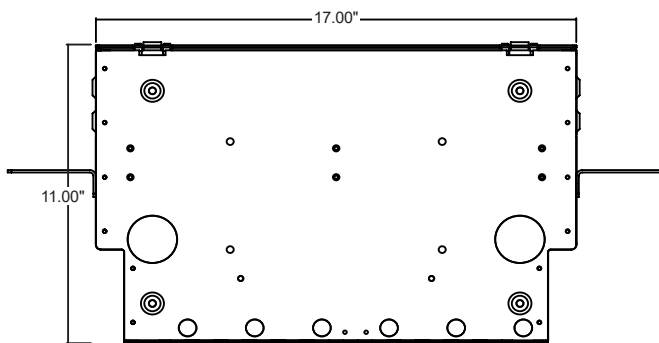
DPS-525



DPS-700



DPS-105



Top View

PART NUMBERS

Description	Part No.
LightSpace™ DPS-525 Optical Splice Enclosure, 3RU	DPS3U-STD
LightSpace™ DPS-700 Optical Splice Enclosure, 4RU	DPS4U-STD
LightSpace™ DPS-105 Optical Splice Enclosure, 6RU	DPS6U-STD
Grounding Kit	DPGRD-KIT
Key Lock Kit	DPLOK-KIT
Universal Cable Clamp Kit (.25"-1.2" diameter)	DPCMP-UNV

DPS-525

Holds up to 4 Splice Trays

Using Heat Shrink	Up to 96 fibers
Using Ribbon*	Up to 288 fibers

*Ribbon Breakout Kit, sold separately, is recommended.
Contact Tech Support for best practice in ribbon fiber installation.

DPS-700

Holds up to 6 Splice Trays

Using Heat Shrink	Up to 144 fibers
Using Ribbon*	Up to 432 fibers

*Ribbon Breakout Kit, sold separately, is recommended.
Contact Tech Support for best practice in ribbon fiber installation.

DPS-105

Holds up to 12 Splice Trays

Using Heat Shrink	Up to 288 fibers
Using Ribbon*	Up to 864 fibers

*Ribbon Breakout Kit, sold separately, is recommended.
Contact Tech Support for best practice in ribbon fiber installation.

LGX® is a registered trademark of Fitel USA Corp.

Page 3 of 3

Leviton Network Solutions 2222 - 222nd St. SE Bothell, WA 98021-4416 tel 1-800-824-3005 tel +1-425-486-2222 apeng@leviton.com www.leviton.com	Asia / Pacific T +1.631.812.6228 E infoasean@leviton.com	Canada T +1.514.954.1840 E pcservice@leviton.com	Caribbean T +1.954.593.1896 E infocaribbean@leviton.com	China T +852.2774.9876 E infochina@leviton.com	Colombia T +57.1.743.6045 E infocolombia@leviton.com
	Europe T +33.6.8869.1380 E infoeurope@leviton.com	India / SAARC T +971.4.886.4722 E infoindia@leviton.com	Mexico T +52.55.5082.1040 E lsamarketing@leviton.com	Middle East & Africa T +971.4.886.4722 E lmeinfo@leviton.com	South Korea T +82.2.3273.9963 E infokorea@leviton.com