

PRODUCT SPECIFICATIONS

69586-B24

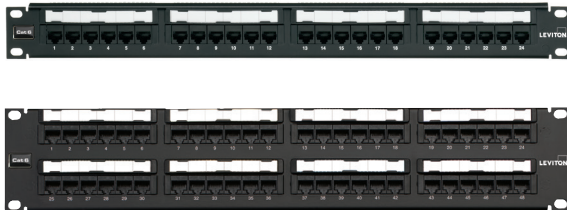
69586-B48



Cat 6 Flat Unshielded 110-Style Patch Panels with Earthing Jumper & Cable Management Clip

APPLICATION

Leviton Cat 6 Flat Unshielded 110-Style Patch Panels are designed for use on 19-inch standard racks and cabinets. Patch panels include patented Retention Force Technology™, which promotes consistent performance over the life of the system. Installer-friendly design allows for quick installation due to standard 110 terminations on the rear of the panels that follow the normal installation colour sequence (blue, orange, green, brown) from left to right. The Cat 6 system is designed for use in high-megabit applications such as Gigabit Ethernet.



SPECIFICATION

Patch panels shall meet or exceed the requirements for channel- and component-level performance as described in ANSI/TIA-568.2-D Category 6 standards, as well as the Class E requirements described in ISO/IEC 11801-1. Panels shall feature both T568A and T568B wiring configurations, white IDC 110-punchdown modules, mounting standoffs for cable management bars, and colour-coded front window labelling. Panels shall have universal T568A and T568B wiring card for terminations. Panels shall be made of 14-gauge steel, and shall have a black painted finish with white silk-screening. The plastic elements shall be fire retardant with a UL flammability rating of 94V-0. Panels shall be offered in 24- and 48-port configurations, and include a factory-assembled 300 mm long 4 mm² (12 AWG) earthing jumper. Patch panels shall be configured with six port modules. The 110 termination on the rear of the panels shall follow normal installation colour sequence (blue, orange, green, brown) from left to right. The cable management clip secures cables quickly, without the need for ties or wraps. The panels shall exceed IEEE 802.3bt standard up to 0.5 amps per conductor (100 watts) continuously.

COUNTRY OF ORIGIN

USA

FEATURES

- Patented Retention Force Technology™ protects tines from damage and increases system longevity
- Craft-friendly installation
- Universal T568A and T568B wiring cards for 110-style IDC terminations
- Colour-coded front labelling for easy port identification (ANSI/TIA-606-C compliant)
- Terminates 26-22 gauge solid conductors
- Capable of multiple re-terminations
- 4mm² (12AWG) standard compliant earthing jumper allows earthing flexibility
- Cable management clip secures cables quickly, without the need for user supplied ties or wraps
- Will exceed IEEE 802.3bt standard up to 0.5 amps per conductor (100 watts) continuously
- ETL verified to meet the IEC 60512-99-002 standard for support of IEEE 802.3bt Type 4 PoE (90-watt) applications

DESIGN CONSIDERATIONS

- Mounts on 19-inch equipment racks
- Panel offered in 24- and 48-port configurations
- Connector modules are in groups of six
- Includes rear cable management bars (one per row) and cable management clip
- Use earthing jumper for grounding in rack-mount installations
- Includes ring and spade terminals for user-supplied earthing wire for extension to rack or cabinet earthing connection

STANDARDS COMPLIANCE

- ANSI/TIA-568.2-D (Cat 6)
- ISO/IEC 11801-1 (Class E)
- ANSI/TIA-1096-A (formerly FCC Part 68)
- IEC 60512-99-002
- IEEE 802.3bt PoE Type 1 (15.4 Watts) formerly 802.3af, Type 2 (30 Watts) formerly 802.3at, Type 3 (60 Watts), Type 4 (90 Watts)
- Cisco UPoE (60 Watts), UPoE+ (90 Watts)
- Power over HDBaseT™ PoH (95 Watts)

PHYSICAL SPECIFICATIONS

Dimensions: See page 2

Capacity: 24- and 48-port

Materials: 14-gauge steel, painted black; PCB and plastic components are rated per UL 94V-0

69586-B24, 69586-B48

Page 1 of 2

Leviton Network Solutions

2222 - 222nd St. SE
Bothell, WA 98021-4416

tel 1-800-824-3005
tel +1-425-486-2222
appeng@leviton.com
www.leviton.com

Asia / Pacific

T +1.631.812.6228
E infoasean@leviton.com

Europe

T +44.0.1592.772124
E customerserviceeu@leviton.com

Canada

T +1.514.954.1840
E pcservice@leviton.com

Mexico

T +52.55.5082.1040
E lsamarketing@leviton.com

Caribbean

T +1.954.593.1896
E infocaribbean@leviton.com

Middle East & Africa

T +971.4.247.9800
E lmeinfo@leviton.com

China

T +852.2774.9876
E infochina@leviton.com

South Korea

T +82.2.3273.9963
E infokorea@leviton.com

Colombia

T +57.1.743.6045
E infocolombia@leviton.com

PRODUCT SPECIFICATIONS

69586-B24
69586-B48



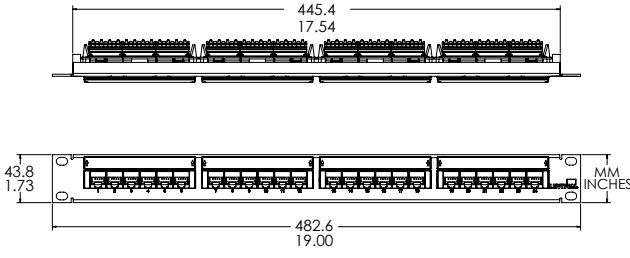
WARRANTY INFORMATION

Note: Limited Product and Limited Extended Warranties are rendered VOID if the installed structured cabling system is used for PoE applications that exceed the product's specified power rating.

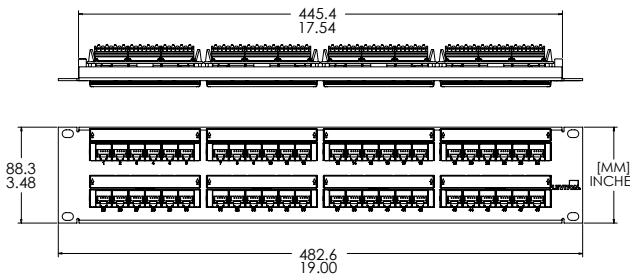
For a copy of Leviton product warranties, visit www.leviton.com/warranty.

ELECTRONIC FILES

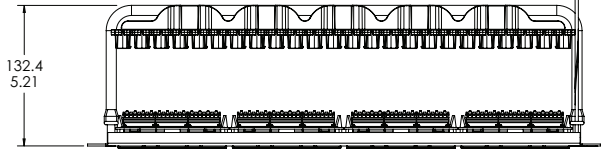
For CAD files, typical specs, or technical drawings (.DXF, .DWG), visit www.leviton.com.



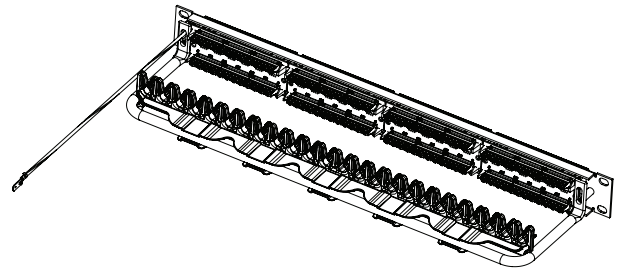
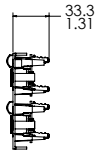
69586-B24



69586-B48



Panel shown with cable management bar and clip installed



Panel shown with cable management bar and clip installed

69586-B24, 69586-B48

PART NUMBERS

Description	Part No.
Cat 6 Flat UTP 110-Style Patch Panel, 1RU, 24-Port, with earthing jumper, cable management bar, and cable management clip	69586-B24
Cat 6 Flat UTP 110-Style Patch Panel, 2RU, 48-Port, with earthing jumper, cable management bar, and cable management clip	69586-B48

Leviton Network Solutions

2222 - 222nd St. SE
Bothell, WA 98021-4416

tel 1-800-824-3005
tel +1-425-486-2222
appeng@leviton.com
www.leviton.com

Asia / Pacific
T +1.631.812.6228
E infoasean@leviton.com

Europe
T +44.0.1592.772124
E customerserviceeu@leviton.com

Canada
T +1.514.954.1840
E pcservice@leviton.com

Mexico
T +52.55.5082.1040
E lsamarketing@leviton.com

Caribbean
T +1.954.593.1896
E infocaribbean@leviton.com

Middle East & Africa
T +971.4.247.9800
E lmeinfo@leviton.com

China
T +852.2774.9876
E infochina@leviton.com

South Korea
T +82.2.3273.9963
E infokorea@leviton.com

Colombia
T +57.1.743.6045
E infocolombia@leviton.com