

## PRODUCT SPECIFICATIONS

SPLCx-xxx, SPSCx-xxx, SPMPx-xMP

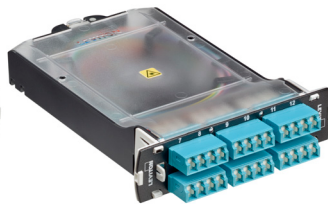
# OPT-X™ SDX Splice Modules

## APPLICATION

OPT-X SDX LC, SC, and MPO Splice Modules protect and organize heat-shrink fusion spliced fibers (up to 12, 24, or 72 fibers) for installation in an SDX fiber enclosure or panel. The modular design enables faster field splicing and simple management of pigtails within the housing. Splice modules eliminate the need for individual splice trays within a fiber enclosure and provide optimal organization and slack management of fibers. Typical applications include Wide Area Networks (WAN), campuses, high-count riser buildings, government installations, data centers, and central offices.



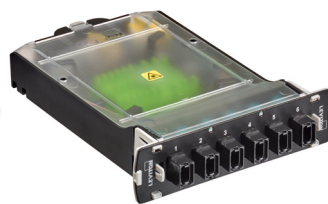
SPLCS-2QL



SPLCS-4QL



SPSCS-2LC



SPMPS-MMP

## SPECIFICATION

Fiber pigtail fusion splice modules shall be offered in 12 and 24-fiber LC (PC, UPC, and APC), 12-fiber SC (PC, UPC, and APC), and 72-fiber MPO configurations in OM3, OM4, and OS2 fiber types. Construction of module shall be 16-gauge sheet metal faceplate for robustness and the chassis and cover shall be polycarbonate for overall light weight. LC and SC Splice Modules shall be pre-loaded and routed with respective one-meter, color-coded individual 900 µm pigtail assembly. MPO splice modules shall be pre-loaded with one-meter 250 µm ribbonized 12-fiber pigtail assemblies. Individual pigtails shall have maximum insertion loss of 0.40 dB for OM3/OM4 and 0.35 dB for OS2 fiber types. Return Loss shall be greater than 25 dB (for OM3 and OM4), 55 dB (for OS2/UPC), and 65 dB (for OS2/APC). LC adapters shall use ceramic ferrules and they shall provide IP5x-rated internal shutters compliant with IEC 60529. Module shall provide slack storage and bend radius protection for incoming backbone fibers, 900 µm tight-buffer fibers, and fusion-spliced fibers. Incoming 250 µm backbone fibers shall be protected by a braided mesh sleeve. Heat-shrink style single or ribbon splice sleeves, a braided mesh sleeve, and tie wraps shall be included with module.

Page 1 of 2

## FEATURES & BENEFITS

- Modules integrate fiber adapter bulkhead (12 or 24 fibers) and splice holders, eliminating need of splice trays
- Integrated latching tabs allow for one-handed insertion and removal from SDX enclosures and panels
- Offered in single-mode (OS2) UPC, APC, and laser-optimized multimode (OM3 and OM4) fiber types in LC, SC, or MPO connectivity
- No proprietary tool or fixture required for fusion splicing
- 12-fiber color-coded 900 µm pigtail assembly allows for easy identification when fusion splicing
- Patented internal shutters on LC adapters eliminate the need for dust plugs to reduce waste, speed up deployment, and ensure safer installations
- Modular design allows for easy maintenance of individual spliced fiber and scaling up without impacting adjacent fibers
- Accessory kit includes heat-shrink splice sleeves, braided mesh sleeve, build-up tape and tie wraps
- Patented MPO pigtail assembly allows for easy routing within module and no-preparation mass fusion splicing

## DESIGN CONSIDERATIONS

- Installs in SDX rack-mount and wall-mount fiber enclosures
- Zirconia ceramic ferrule used on LC and SC connectors
- Zirconia ceramic sleeve used on LC and SC adapters
- Individual splice holder accepts up to 12 heat-shrink style splice sleeves—ribbon splice sleeves accept 12 flat, rollable, or ribbonized fibers
- For outside-plant fiber cable please contact Technical Support

## STANDARDS & REGULATIONS

- ANSI/TIA-568.3-E Optical Fiber Cabling and Components
- ANSI/TIA-604-3 (SC), -5 (MPO), -10A (LC) Connector Intermateability
- IEC 60529 IP5x dust protection (LC)

## MECHANICAL SPECIFICATIONS

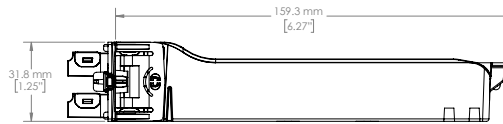
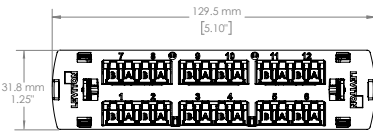
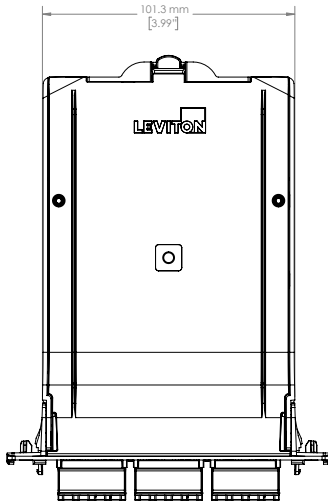
Dimensions:	See page 2
Material:	Black polycarbonate and 16 gauge steel
LC Adapter Colors:	OM4 – aqua or heather violet OM3 – aqua OS2/UPC – blue OS2/APC – green

MPO Adapter Colors: Black

Temp. (Installation): -10 °C to +60 °C (+14 °F to +140 °F)

Temp. (Operating): -10 °C to +60 °C (+14 °F to +140 °F)

**PRODUCT SPECIFICATIONS**  
**SPLCx-xxx, SPSCx-xxx, SPMPx-xMP**



**COUNTRY OF ORIGIN**

China

**WARRANTY INFORMATION**

For Leviton product warranties, go to [Leviton.com/ns/warranty](http://Leviton.com/ns/warranty)

PERFORMANCE SPECIFICATIONS				
	Multimode		Single-mode	
	Max. IL	Min. RL	Max. IL	Min. RL
LC	0.40 dB	>25 dB	0.35 dB	-55 db (-65 for APC)
SC				
MPO				

PART NUMBER	
Description	Part No.
12-Fiber, OM3, Duplex Shuttered LC (Aqua)	SPLCS-2AL
12-Fiber, OM4, Duplex Shuttered LC (Aqua)	SPLCS-2QL
12-Fiber, OM4, Duplex Shuttered LC (Heather Violet)	SPLCS-2ML
12-Fiber, OS2, Duplex Shuttered LC (Blue)	SPLCS-2LL
12-Fiber, OS2, Duplex LC/APC Shuttered (Green)	SPLCS-2VL
24-fiber, OM4, Quad Shuttered LC (Aqua)	SPLCS-4QL
24-fiber, OM3, Quad Shuttered LC (Aqua)	SPLCS-4AL
24-fiber, OM4, Quad Shuttered LC (Heather Violet)	SPLCS-4ML
24-fiber, OS2, Quad Shuttered LC (blue)	SPLCS-4LL
24-fiber, OS2, Quad LC/APC Shuttered (green)	SPLCS-4VL
12-Fiber, OM4, Duplex SC (Aqua)	SPSCS-2QC
12-Fiber, OS2, Duplex SC (Blue)	SPSCS-2LC
12-Fiber, OS2, Duplex SC/APC (Green)	SPSCS-2VC
6-port, OM4 Simplex MPO (Male)	SPMPS-MMP
6-port, OS2 Simplex MPO (Male)	SPMPS-SMP

For further support information, visit [Leviton.com/ns/support](http://Leviton.com/ns/support)