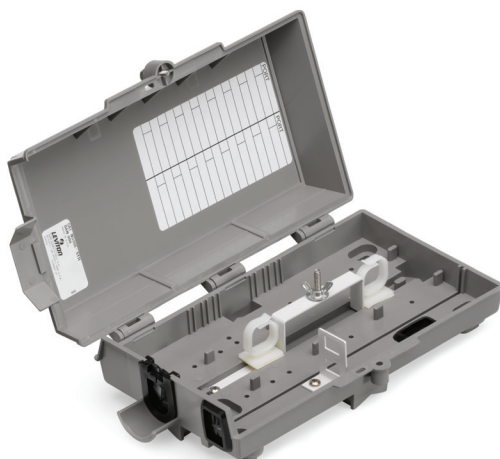


## **LIGHTSPACE™ 530 Series Fiber Optic NID**

### **APPLICATION**

The LIGHTSPACE 530 Series Fiber Optic NID (Network Interface Device) is a low-profile, full-featured NID combined with the splicing and connectivity of fiber optics. It is constructed of materials capable of withstanding harsh indoor and outdoor conditions, such as UV degradation, chemical exposure, and sub-freezing temperatures. This single door unit is designed for wall mounting, and will accommodate 12 splices and up to 4 terminations.



### **SPECIFICATION**

Unit shall be a compact NID constructed of materials capable of withstanding UV exposure, chemical exposure, and sub-freezing temperatures. Unit shall accommodate one 12-fiber splice tray and up to 4 terminations and provide a means for sealing cable entry ports. Hinges shall hold door in the open position for service and doors shall seal securely to protect contents from moisture and foreign matter intrusion.

### **FEATURES & BENEFITS**

- Accommodates one 12-fiber splice tray and up to 4 terminations, sold separately
- Compact molded splice tray includes 40mm fusion splice sleeves
- Flexible grommets provide sealing for cable entry ports
- Secure fit provides maximum protection from the elements and foreign matter intrusion
- Side hinged to allow convenient access to all components
- Unique detent/release mechanism holds the door open for easy installation and servicing

### **DESIGN CONSIDERATIONS**

- Capable of withstanding harsh indoor and outdoor conditions
- Includes provisions for padlock (padlock not included)

### **MECHANICAL SPECIFICATIONS**

Dimensions: See page 2  
Materials: Made of thermoplastic composite

### **COUNTRY OF ORIGIN**

Mexico

### **WARRANTY INFORMATION**

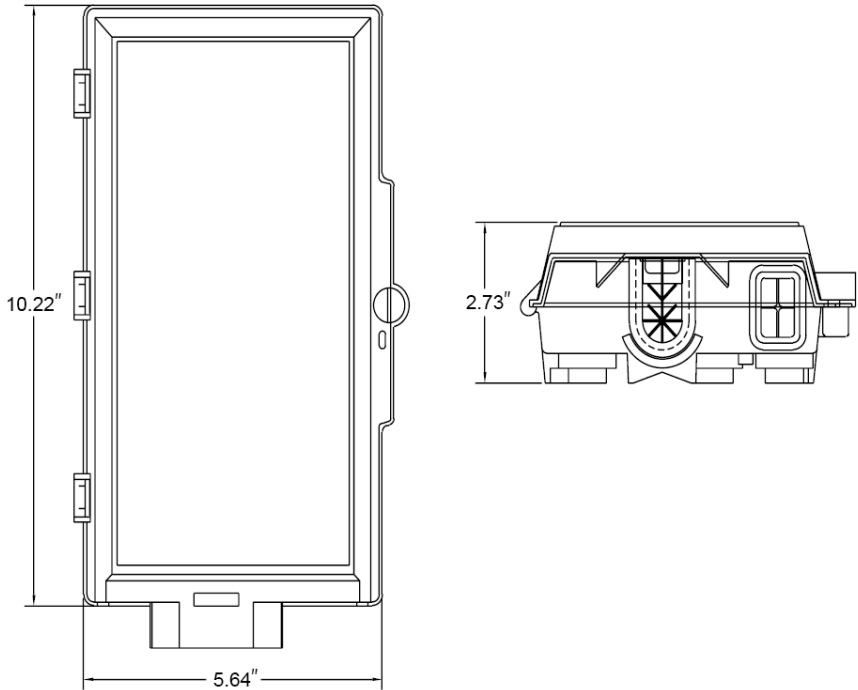
For Leviton product warranties, go to [Leviton.com/warranty](https://leviton.com/warranty)

**N5300-STD**

PRODUCT SPECIFICATIONS

N5300-STD

N5300-STD



PART NUMBERS	
Description	Part No.
LIGHTSPACE™ NID 530, single door, left hinge, empty	N5300-STD
12-Fiber Mini Injection Molded Splice Tray	T5PLS-12F

For further support information, visit [Leviton.com/ns/support](https://leviton.com/ns/support)