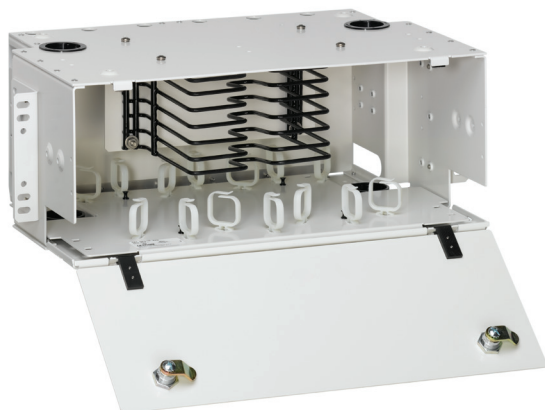


LIGHTSPACE™ DPS Series Optical Splice Enclosures

APPLICATION

LIGHTSPACE DPS Series Optical Splice Enclosures are designed to protect, manage, and organize fiber splices in a rack-mount environment. LGX® compatibility allows users to fill and expand legacy systems. All enclosures feature a unique tray holder that allows users to select from a variety of splice tray styles, including 12- and 24-fiber versions. Units can be purchased separately or in combination.



SPECIFICATION

Optical Splice Enclosures shall protect, manage, and organize fiber splices in a rack-mount environment. Enclosures shall be LGX compatible and shall include locking options for increased security.

FEATURES & BENEFITS

- Accepts Leviton standard splice trays
- 19- and 23-inch rack mounting
- Constructed of high-strength aluminum
- Removable hinged front door and hinged rear door
- Large cable management rings for enhanced jumper routing
- Metal door for added security
- Key lock option for restricted access
- Stackable for custom applications
- Cable clamp kits for additional cable strain relief
- Grounding kit available

DESIGN CONSIDERATIONS

- Use to protect, manage and organize fiber terminations and splices in a rack-mount environment
- LGX compatible
- Bend Radius Bracket not included with product

STANDARDS & REGULATIONS

- NEBS GR-63

MECHANICAL SPECIFICATIONS

Dimensions: See page 2
Materials: Aluminum

COUNTRY OF ORIGIN

USA

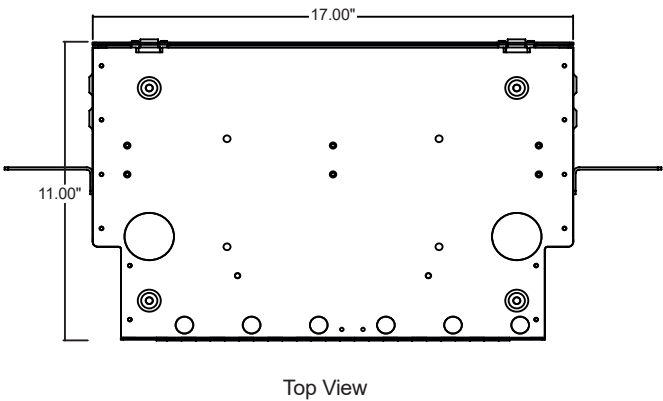
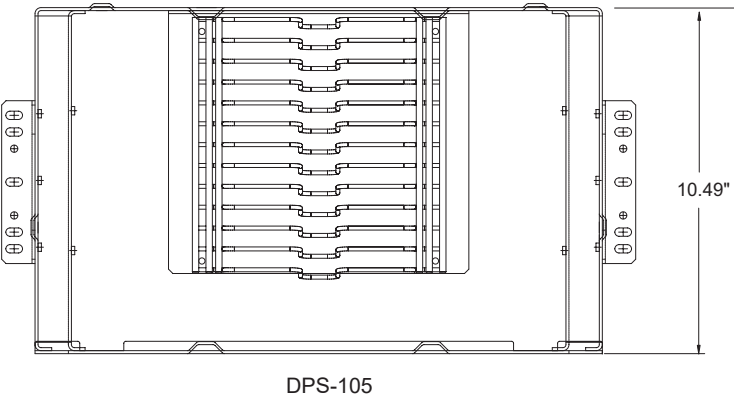
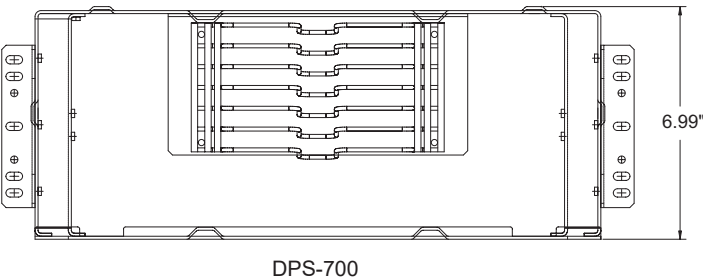
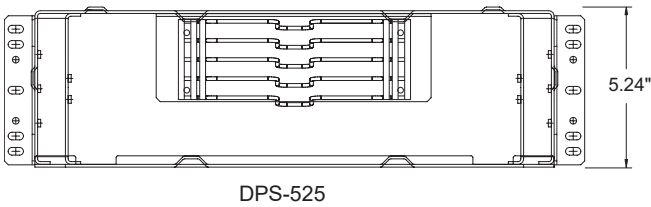
WARRANTY INFORMATION

For Leviton product warranties, go to [Leviton.com/ns/warranty](https://leviton.com/ns/warranty)

DPSxU-STD

PRODUCT SPECIFICATIONS
DPSxU-STD

DPSxU-STD



PRODUCT SPECIFICATIONS
DPSxU-STD

DPSxU-STD

DPS-525	
Holds up to 4 Splice Trays	
Using Heat Shrink	Up to 96 fibers
Using Ribbon*	Up to 288 fibers
*Ribbon Breakout Kit, sold separately, is recommended. Contact Tech Support for best practice in ribbon fiber installation.	

DPS-700	
Holds up to 6 Splice Trays	
Using Heat Shrink	Up to 144 fibers
Using Ribbon*	Up to 432 fibers
*Ribbon Breakout Kit, sold separately, is recommended. Contact Tech Support for best practice in ribbon fiber installation.	

DPS-105	
Holds up to 12 Splice Trays	
Using Heat Shrink	Up to 288 fibers
Using Ribbon*	Up to 864 fibers
*Ribbon Breakout Kit, sold separately, is recommended. Contact Tech Support for best practice in ribbon fiber installation.	

PART NUMBERS	
Description	Part No.
LIGHTSPACE™ DPS-525 Optical Splice Enclosure, 3RU	DPS3U-STD
LIGHTSPACE DPS-700 Optical Splice Enclosure, 4RU	DPS4U-STD
LIGHTSPACE DPS-105 Optical Splice Enclosure, 6RU	DPS6U-STD
Grounding Kit	DPGRD-KIT
Key Lock Kit	DPLOK-KIT
Universal Cable Clamp Kit (.25"-1.2" diameter)	DPCMP-UNV

For further support information, visit [Leviton.com/ns/support](https://leviton.com/ns/support)