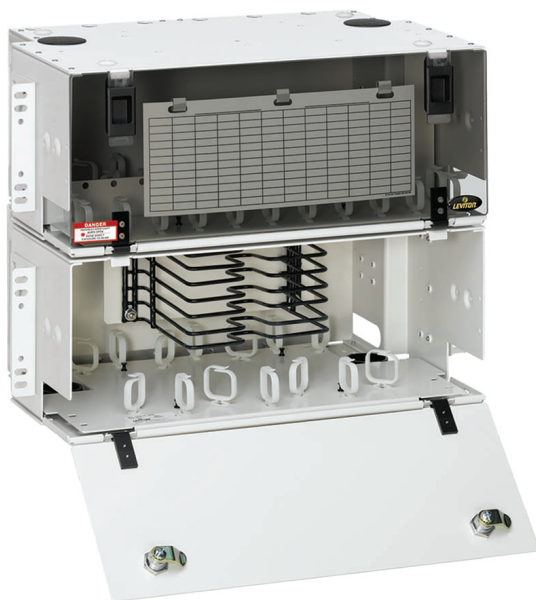


LIGHTSPACE™ DPC Series Optical Distribution & Splice Enclosure

APPLICATION

Leviton LIGHTSPACE DPC Series Optical Distribution and Splice Enclosures are designed to protect, manage, and organize fiber terminations and splices in a rack-mount environment. LGX® compatibility allows users to fill and expand legacy systems. Enclosures may be combined to provide splicing and termination in a single, factory-assembled unit. Enclosures are available with pre-loaded pigtail and splice trays for fast and simple setup.



SPECIFICATION

Optical distribution and splice enclosures shall protect, manage, and organize fiber terminations and splices in a rack-mount environment. Units shall be LGX compatible and support legacy systems. Units shall be available in sizes large enough to support up to twelve 12-pack panels. Units shall be available with adapters, pigtails, or pre-connectorized cable stubs. Splices and terminations shall be housed in separate sections of the enclosure.

FEATURES & BENEFITS

- Accepts Leviton standard 12 pack (DPC-105) adapter plates
- Accepts LGX compatible 6- or 8-pack adapter plates
- Accepts Leviton standard splice trays
- 19- and 23-inch rack mounting
- Removable hinged front doors and hinged rear door
- Flip card for connector identification
- Large cable management rings for enhanced jumper routing
- Metal door and key lock options for increased security
- Pigtails routed internally for maximum protection
- Cable clamp kits for additional cable strain relief
- Grounding kit available

DESIGN CONSIDERATIONS

- Used to protect, manage, and organize fiber terminations and splices in a rack-mount environment
- Constructed of high-strength aluminum
- LGX compatible

STANDARDS & REGULATIONS

- NEBS GR-63

MECHANICAL SPECIFICATIONS

Dimensions: See page 2
Materials: Aluminum

COUNTRY OF ORIGIN

USA

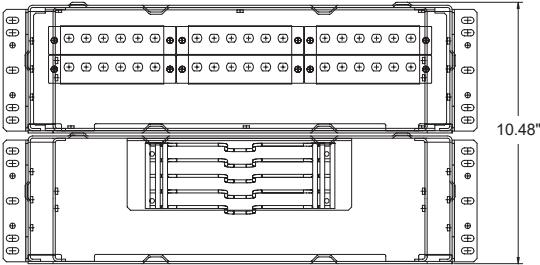
WARRANTY INFORMATION

For Leviton product warranties, go to Leviton.com/ns/warranty

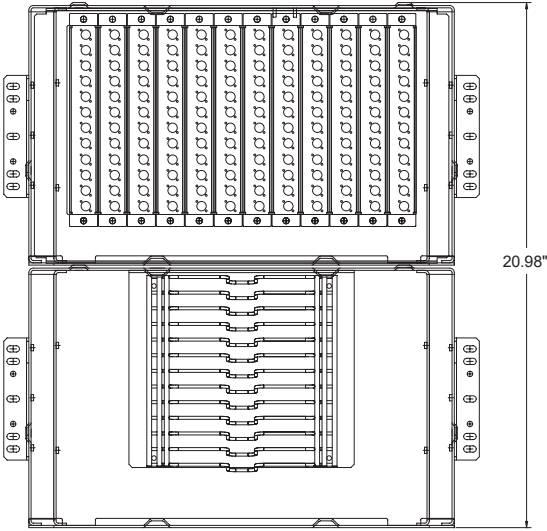
DPCxU-xxx, DPC12-066

PRODUCT SPECIFICATIONS
DPCxU-xxx, DPC12-066

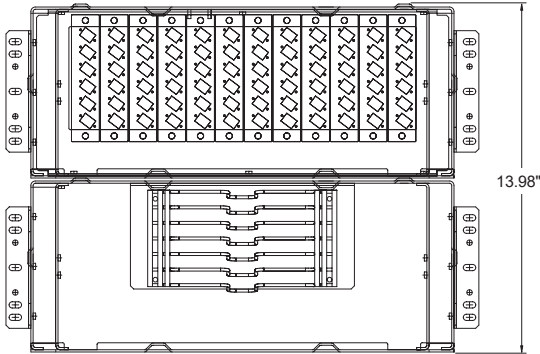
DPCxU-xxx, DPC12-066



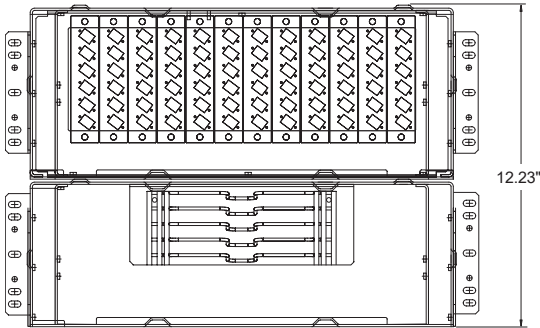
DPC-525



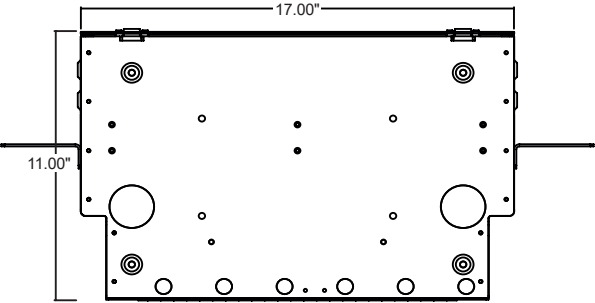
DPC-105



DPC-700



DPC-752



Top View

PRODUCT SPECIFICATIONS
DPCxU-xxx, DPC12-066

DPCxU-xxx, DPC12-066

DPC-525	
Holds up to 6 Adapter Plates & 4 Splice Trays	
6-pack ST or SC	Up to 36 fibers
8-pack ST or SC	Up to 48 fibers
6-pack duplex SC or LC	Up to 72 fibers
6-pack Quad LC	Up to 144 fibers

DPC-700	
Holds up to 12 Adapter Plates & 6 Splice Trays	
6-pack ST or SC	Up to 72 fibers
8-pack ST or SC	Up to 96 fibers
6-pack duplex SC or LC	Up to 144 fibers
6-pack Quad LC	Up to 288 fibers

DPC-752	
Holds up to 12 Adapter Plates & 4 Splice Trays	
6-pack ST or SC	Up to 72 fibers
8-pack ST or SC	Up to 96 fibers
6-pack duplex SC or LC	Up to 144 fibers
6-pack Quad LC	Up to 288 fibers

DPC-105	
Holds up to 12 Adapter Plates & 12 Splice Trays	
12-pack ST or SC	Up to 144 fibers
12-pack duplex LC	Up to 288 fibers

PART NUMBER	
Description	Part No.
LIGHTSPACE™ DPC-525 Optical Distribution & Splice Enclosure	DPC6U-033
LIGHTSPACE DPC-752 Optical Distribution & Splice Enclosure	DPC7U-043
LIGHTSPACE DPC-700 Optical Distribution & Splice Enclosure	DPC8U-STD
LIGHTSPACE DPC-105 Optical Distribution & Splice Enclosure	DPC12-066
Grounding Kit	DPGRD-KIT
Key Lock Kit	DPLOK-KIT
Universal Cable Clamp Lit (.25"-1.2" diameter)	DPCMP-UNV

For further support information, visit [Leviton.com/ns/support](https://leviton.com/ns/support)