

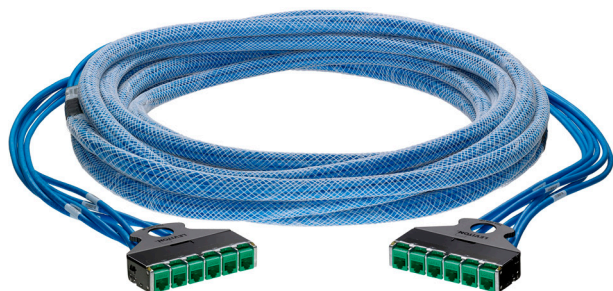
PRODUCT SPECIFICATIONS

EXTREME™ Pre-Terminated Copper Trunk Cables

EXTREME™ Pre-Terminated Copper Trunk Cables

APPLICATION

Copper trunk cable assemblies are the ideal solution for data centers and other applications where speed of installation is important. Factory termination and testing simplify installation and improve consistency while saving time and labor, as compared to field-terminated installations. Assemblies are custom configured with connectors in pre-engineered lengths to meet the specific needs of each application. A braided sleeve binding bundles individual cables into an aesthetic and cohesive trunk assembly, while an optional pulling eye protects terminations during shipment, ensuring easy and efficient installation.



SPECIFICATION

Trunk cables shall be available in variable bundle sizes of 2-12 cables. They shall be available in plenum, riser, or LSZH ratings. Trunk cables shall be available in Cat 6 UTP cable constructions. Each shall be available in jack, plug, open, or cassette termination combinations depending on cable type. Each will be available in custom lengths in 1-ft increments. Total trunk length shall not exceed ANSI/TIA standards. A pulling eye option is available on most configurations to protect terminations during shipment and to make it easier to install the trunks. Each trunk shall receive a unique identification number, and each cable shall be numbered relative to the identification number.

WARRANTY INFORMATION

For Leviton product warranties, go to Leviton.com/ns/warranty

FEATURES & BENEFITS

- Fast and easy installation with 75% reduction in labor costs
- Braided sleeve binding and optional pulling eye ensure snag-free installation
- Trunks use EXTREME UTP connectors with patented Retention Force Technology (RFT) for consistent system reliability
- Plugs feature clear SlimLine design which includes a snagless strain-relief boot for Cat 6
- Cable assemblies are 100% factory tested, with test results available for each link
- Terminated ends offered in either staggered or even cut with customized breakout length from braided sleeve for improved flexibility during installation and appearance after installation
- Trunks are also available with e2XHD Copper Cassettes
- Each trunk assembly receives an individual identification number, and individual cables are numbered relative to that number (custom labeling available on request)

DESIGN CONSIDERATIONS

- Available in plenum, riser, or LSZH cable ratings
- Cable assemblies use a fire-retardant braided mesh sleeve
- Standard colors are blue for UTP cable, black for UTP jacks (more colors available), and clear for plugs
- Available in 1-ft increments from 10-295 ft (min. 6-ft length for Cat 6 assemblies)
- Minimum breakout lengths: 18 inches for bundles of 6, 20 inches for bundles of 8, and 24 inches for bundles of 12
- Default alignment is staggered for connector terminations and even for plug and open terminations
- e2XHD cassettes terminated to trunks work exclusively with e2XHD Flat or Angled patch panels

STANDARDS & REGULATIONS

- System components meet or exceed the category requirements for performance per ANSI/TIA-568.2-D
- Jack-to-Jack assemblies are tested to permanent link requirements
- Jack-to-Plug assemblies are tested to MPTL requirements
- Plug-to-Plug assemblies are tested to channel requirements

PRODUCT SPECIFICATIONS
EXTREME™ Pre-Terminated Copper Trunk Cables

EXTREME Pre-Terminated Copper Trunk Cables

COPPER TRUNK BUNDLE SIZES			
Cable Type	Bundle Size	Bundle O.D. (in.)	Bundle Wt. (lbs. per 1,000 ft.)
Cat 6 CMP LANMARK-1000, Enhanced	2	0.45	60
	3	0.45	90
	4	0.61	120
	5	0.68	150
	6	0.68	180
	7	0.68	210
	8	0.82	240
	9	0.82	270
	10	0.90	300
	11	0.90	330
	12	0.90	360
Cat 6 CMR LANMARK-1000, Enhanced	2	0.46	50
	3	0.46	75
	4	0.63	100
	5	0.69	125
	6	0.69	150
	7	0.69	175
	8	0.84	200
	9	0.84	225
	10	0.92	250
	11	0.92	275
	12	0.92	300
Cat 6 LSZH	2	0.46	50
	3	0.46	75
	4	0.62	100
	5	0.68	125
	6	0.68	151
	7	0.68	176
	8	0.83	201
	9	0.83	226
	10	0.91	251
	11	0.91	277
	12	0.91	302

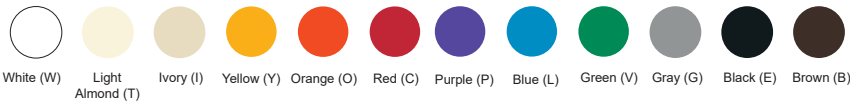
Pulling Eye for copper trunks assumes staggered 6-cable bundle ~ 1.75", 8-cable bundle ~ 2.00", and 12 cable bundle ~ 2.75"

PRODUCT SPECIFICATIONS

EXTREME™ Pre-Terminated Copper Trunk Cables

Make-to-order!		EXTREME PRE-TERMINATED COPPER TRUNK CABLES			
Cable Type	Cable Rating	# of Cables	Cable Length ft. (m)	Cable Color	Termination Options
• Cat 6 UTP	• CMP (U6P)	• 6	• 6-295 ft (2-90 m)	• Blue (L)	• Jack (J)
	• CMR (U6R)	• 8			• Plug (P)
	• LSZH (U6Z)	• 12			• Open (O)
					• Cassette (C)

Individual Jack Colors (black is standard, additional colors can be configured)



For assistance customizing your copper trunks, please visit [Leviton.com/configurator](https://leviton.com/configurator) or call Tech Support at +1 800-824-3005.



Trunks also available terminated to e2XHD Copper Cassettes, using EXTREME Cat 6 QUICKPORT™ Connectors.

EXTREME Pre-Terminated Copper Trunk Cables

For further support information, visit [Leviton.com/ns/support](https://leviton.com/ns/support)