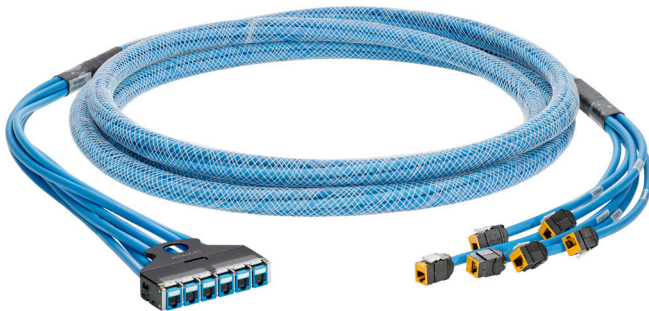


## ATLAS-X1™ Pre-Terminated Copper Trunk Cables

### APPLICATION

Copper trunk cable assemblies are the ideal solution for data centers and other applications where speed of installation is important. Factory termination and testing simplify installation and improve consistency while saving time and labor, as compared to field-terminated installations. Assemblies are custom configured with connectors in pre-engineered lengths to meet the specific needs of each application. A braided sleeve binding bundles the individual cables into an aesthetic and cohesive trunk assembly, while an optional pulling eye protects terminations during shipment, ensuring easy and efficient installation.



### SPECIFICATION

Trunk cables shall be available in variable bundle sizes of 2-12 cables. They shall be available in plenum, riser, or LSZH ratings. Trunk cables shall be available in Cat 6, and Cat 6A UTP and FTP cable constructions. Each shall be available in jack, plug, open, or cassette termination combinations depending on cable type. Each will be available in custom lengths in 1-ft increments. Total trunk length shall not exceed ANSI/TIA standards. A pulling eye option is available on most configurations to protect terminations during shipment and to make it easier to install the trunks. Each trunk shall receive a unique identification number, and each cable shall be numbered relative to the identification number.

### STANDARDS & REGULATIONS

- ANSI/TIA-568.2-D
- Jack-to-Jack assemblies are tested to permanent link requirements
- Jack-to-Plug assemblies are tested to MPTL requirements
- Plug-to-Plug assemblies are tested to channel requirements

### FEATURES & BENEFITS

- Fast and easy installation with 75% reduction in labor costs
- Braided sleeve binding and optional pulling eye ensure snag-free installation
- Trunks use ATLAS-X1 UTP or shielded connectors, which include patented Retention Force Technology (RFT) for system reliability
- Plugs feature clear design which includes a snagless strain-relief boot (available for UTP Cat 6, and Cat 6A)
- Cable assemblies are 100% factory tested, with test results available for each link
- Terminated ends offered in either even or staggered cut with customized breakout length from braided sleeve for improved flexibility during installation and appearance after installation
- Trunks are also available with e2XHD Copper Cassettes
- Each trunk assembly receives an individual identification number, and individual cables are numbered relative to that number (custom labeling available on request)
- Cat 6A rated UTP trunks provide excellent performance in short lengths and use component-rated connectors

### DESIGN CONSIDERATIONS

- Available in plenum, riser, or LSZH cable ratings
- Cable assemblies use a flame-retardant braided mesh sleeve
- Standard colors are blue for UTP cable, gray for shielded cable, black for UTP jacks (more colors available), gray for shielded jacks, and clear for plugs
- Available in 1-ft increments from 10-295 ft (min. 10 ft length for Cat 6A assemblies, min. 6 ft length for Cat 6 assemblies)
- Minimum breakout lengths: 18 inches for bundles of 6, 20 inches for bundles of 8, and 24 inches for bundles of 12
- Default alignment is staggered for connector terminations and even for plug and open terminations
- e2XHD cassettes terminated to trunks in Cat 6A and Cat 6 work exclusively with e2XHD Flat or Angled patch panels

### WARRANTY INFORMATION

For Leviton product warranties, go to [Leviton.com/ns/warranty](http://Leviton.com/ns/warranty)

**PRODUCT SPECIFICATIONS**  
**ATLAS-X1™ Pre-Terminated Copper Trunk Cables**

**ATLAS-X1 Pre-Terminated Copper Trunk Cables**

COPPER TRUNK BUNDLE SIZES			
Cable Type	Bundle Size	Bundle O.D. (in.)	Bundle Wt. (lbs. per 1,000 ft.)
Cat 6A SST CMP	2	0.51	66
	3	0.51	99
	4	0.68	132
	5	0.75	165
	6	0.75	198
	7	0.75	231
	8	0.91	264
	9	0.91	297
	10	1.00	330
	11	1.00	363
	12	1.00	396
Cat 6A SST CMR	2	0.55	66
	3	0.55	99
	4	0.75	132
	5	0.83	165
	6	0.83	198
	7	0.83	231
	8	1.00	264
	9	1.00	297
	10	1.10	330
	11	1.10	363
	12	1.10	396
Cat 6 CMP LANMARK™-1000, Enhanced	2	0.45	60
	3	0.45	90
	4	0.61	120
	5	0.68	150
	6	0.68	180
	7	0.68	210
	8	0.82	240
	9	0.82	270
	10	0.90	300
	11	0.90	330
	12	0.90	360
Cat 6 CMR LANMARK-1000, Enhanced	2	0.46	50
	3	0.46	75
	4	0.63	100
	5	0.69	125
	6	0.69	150
	7	0.69	175
	8	0.84	200
	9	0.84	225
	10	0.92	250
	11	0.92	275
	12	0.92	300

COPPER TRUNK BUNDLE SIZES			
Cable Type	Bundle Size	Bundle O.D. (in.)	Bundle Wt. (lbs. per 1,000 ft.)
Cat 6 Shielded CMP LANMARK-6 F/UTP	2	0.55	78
	3	0.55	117
	4	0.75	156
	5	0.83	195
	6	0.83	234
	7	0.83	273
	8	1.00	312
	9	1.00	351
	10	1.10	390
	11	1.10	429
	12	1.10	468
Cat 6 Shielded CMR LANMARK-6 F/UTP	2	0.55	78
	3	0.55	117
	4	0.75	156
	5	0.83	195
	6	0.83	234
	7	0.83	273
	8	1.00	312
	9	1.00	351
	10	1.10	390
	11	1.10	429
	12	1.10	468

Pulling Eye for copper trunks assumes staggered 6-cable bundle ~ 1.75", 8-cable bundle ~ 2.00", and 12 cable bundle ~ 2.75"

# PRODUCT SPECIFICATIONS

## ATLAS-X1™ Pre-Terminated Copper Trunk Cables

COPPER TRUNK BUNDLE SIZES			
Cable Type	Bundle Size	Bundle O.D. (in.)	Bundle Wt. (lbs. per 1,000 ft.)
Cat 6A Shielded CMP LANMARK™-10G F/UTP	2	0.55	78
	3	0.55	117
	4	0.75	156
	5	0.83	195
	6	0.83	234
	7	0.83	273
	8	1.00	312
	9	1.00	351
	10	1.10	390
	11	1.10	429
Cat 6A Shielded CMR LANMARK-10G F/UTP	12	1.10	468
	2	0.58	70
	3	0.58	105
	4	0.79	140
	5	0.87	175
	6	0.87	210
	7	0.87	245
	8	1.06	280
	9	1.06	315
	10	1.16	350
Cat 6A Helix LSZH	11	1.16	385
	12	1.16	420
	2	0.60	68
	3	0.60	102
	4	0.82	136
	5	0.90	170
	6	0.90	204
	7	0.90	238
	8	1.09	272
	9	1.09	306
Cat 6 LSZH	10	1.20	340
	11	1.20	374
	12	1.20	408
	2	0.46	50
	3	0.46	75
	4	0.62	100
	5	0.68	125
	6	0.68	151
	7	0.68	176
	8	0.83	201
	9	0.83	226
	10	0.91	251
	11	0.91	277
	12	0.91	302

Pulling Eye for copper trunks assumes staggered 6-cable bundle ~ 1.75", 8-cable bundle ~ 2.00", and 12 cable bundle ~ 2.75"

# PRODUCT SPECIFICATIONS

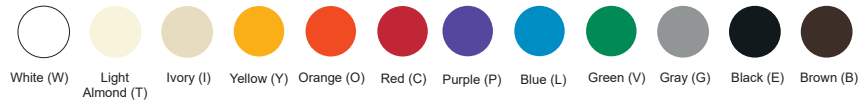
## ATLAS-X1™ Pre-Terminated Copper Trunk Cables

ATLAS-X1 Pre-Terminated Copper Trunk Cables

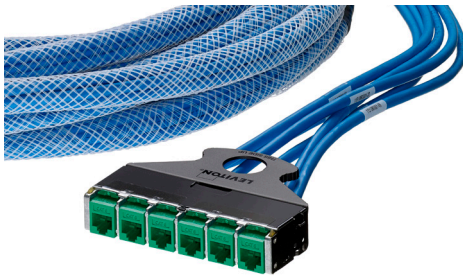
Make-to-order!		PRE-TERMINATED COPPER TRUNK OPTIONS			
Cable Type	Cable Rating	# of Cables	Cable Length ft. (m)	Cable Color	Termination Options
Cat 6A UTP	LSZH (U6HZ)	6	10-295 (3-90)	Blue (L)	Jack (J)
	CMP (UASP)	8			Plug (P)
	CMP (UAIP)	12			Open (O)
Cat 6A FTP	CMR (UASR)		10-295 (3-90)	Gray (S)	Cassette (C)
	CMP (S6AP)	6			Jack (J)
	CMR (S6AR)				Plug (P)
Cat 6A UTP	CMP (U6P)	6	6-295 (2-90)	Blue (L)	Open (O)
	CMR (U6R)	8			Cassette (C)
	LSZH (U6Z)	12			
Cat 6 FTP	CMP (S6P)	6	6-295 (2-90)	Gray (S)	Jack (J)
	CMR (S6R)				Plug (P)
	LSZH (S6Z)				Open (O)



Individual Jack Colors (black is standard, additional colors can be configured)



For assistance customizing your copper trunks, please visit [Leviton.com/configurator](https://leviton.com/configurator) or call Tech Support at +1 800-824-3005.



Trunks also available terminated to e2XHD Copper Cassettes, using ATLAS-X1 Cat 6 and 6A QUICKPORT™ jacks.

For further support information, visit [Leviton.com/ns/support](https://leviton.com/ns/support)