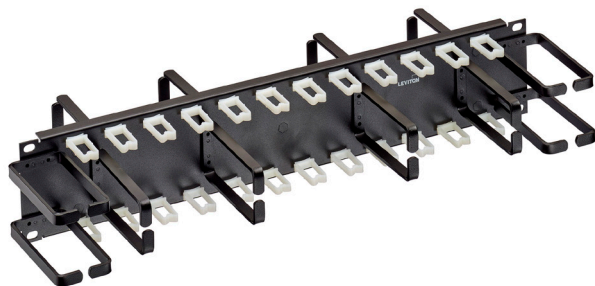


Combo Front/Rear Patch-Cord Manager

APPLICATION

The Combo Front/Rear Patch-Cord Manager is ideal for high density patching applications. Mounts adjacent to single or paired high density (48-Ports per RU) panels. Manager provides horizontal and vertical cord management on the front and support rings on the back for cable distribution and strain relief.



SPECIFICATION

The Combo Front/Rear Patch-Cord Manager, shall provide the capability to organize and contain up to ninety six (96) patch-cords on the front of the panel, and up to ninety six (96) category rated cables—of 0.25" (6.35 mm) nominal diameter or less—on the rear of the panel. The front of the panel shall provide four (4) 1.70" x 3.75" (43 mm x 95 mm) horizontal distribution rings, four (4) 1.70" x 3.75" (43 mm x 95 mm) vertical distribution rings arranged on either side of the manager, and twenty-four (24) plastic clips 0.75" x 1.25" (19 mm x 31 mm) for additional cord management. The rear of the cable manager shall provide four (4) 2.75" x 2.75" (70 mm x 70 mm) distribution rings and shall include quick-insert tie wrap features compatible with user-supplied hook & loop tie-wraps. All distribution rings shall have radiused edges to protect cables from nicks and tears. The manager shall be constructed of 16 AWG steel, black powder-coat finish.

FEATURES & BENEFITS

- Distribution rings are radius-edged (smooth-polished) to protect cable from nicks or wear
- Oversized rings to accommodate all category rated media
- Front Rings Accommodate:
 - Up to 84 0.24 in (6.1 mm) OD patch-cords
 - Up to 96 0.23 in (5.9 mm) OD patch-cables
 - Up to 140 0.185 in (4.7 mm) OD patch-cables
 - Up to 217 0.15 in (2.9 mm) OD patch-cables
 - NOTE: Maximum capacity requires cords to route to both sides of manager. Accommodates ½ listed totals when patch cables route to one side of manager
- Supports proper bend radius
- Four tie-wrap anchors on the rear of the panel help the organization and security of cables

STANDARDS & REGULATIONS

- c(UL)us Listed
- EIA 310.E
- RoHS

MECHANICAL SPECIFICATIONS

Dimensions:	See page two
Materials:	16-gauge steel, black powder coated
Temp. (Storage):	-40 °C to +65 °C (-40 °F to +149 °F)
Temp. (Installation):	Refer to cable installation temperature
Temp. (Operating):	-10 °C to +60 °C (+14 °F to +140 °F)
Humidity (Max.):	95% relative humidity, non-condensing

COUNTRY OF ORIGIN

China

WARRANTY INFORMATION

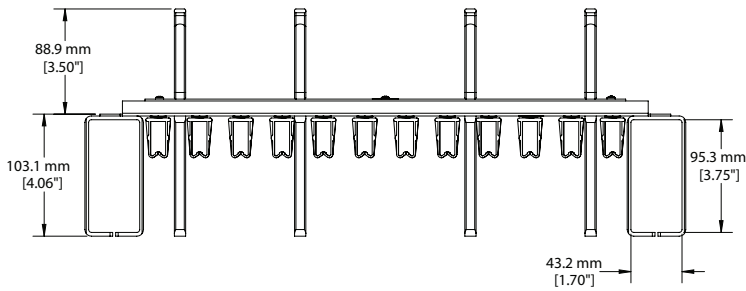
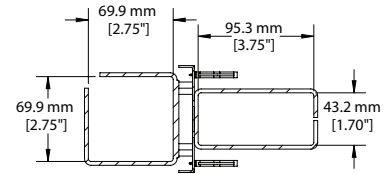
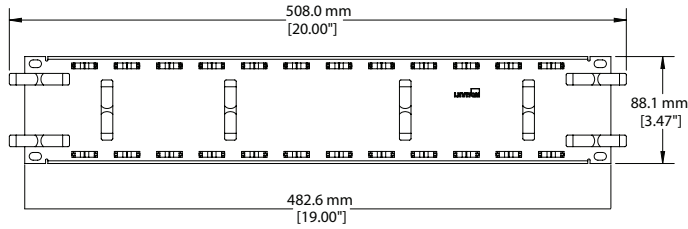
For Leviton product warranties, go to Leviton.com/ns/warranty

49252-PCM

PRODUCT SPECIFICATIONS
49252-PCM



49252-PCM



PART NUMBER	
Description	Part No.
Combo Front/Rear Patch-Cord Manager	49252-PCM

For further support information, visit Leviton.com/ns/support

Page 2 of 2

USA
Network Solutions Headquarters
+1 (800) 722 2082
infoUSA@leviton.com

Leviton Cable (formerly Berk-Tek)
+1 (800) 237 5835 | infoUSA@leviton.com

Asia Pacific
+852 3620 2602
infoAPAC@leviton.com

Canada
+1 (800) 461 2002
infoCanada@leviton.com

Europe
+44 (0) 1592 772124
infoEurope@leviton.com

Latin America
MX: +52 (55) 2128 6286
LATAM: +52 (55) 2333 5963
infoLATAM@leviton.com

Middle East & Africa
+971 (4) 247 9800
infoMEA@leviton.com

NETWORK SOLUTIONS PRODUCTS ARE AVAILABLE WORLDWIDE IN OVER 100 COUNTRIES. VISIT US ONLINE AT LEVITON.COM/NS TO LEARN MORE.