

This is a quick reference of our most popular products and variations. For the full array of our network infrastructure product and system solutions, visit Leviton.com/NS.

QUICKPORT™ COPPER JACKS



DESCRIPTION		RATING	BLUE	WHITE	BLACK	YELLOW	GREEN
CAT 6A	ATLAS-X1 UTP	Component	6AUJK-RL6	6AUJK-RW6	6AUJK-RE6	6AUJK-RY6	6AUJK-RV6
	ATLAS-X1 UTP, w/shutter	Component	6AUJK-SL6	6AUJK-SW6	6AUJK-SE6	6AUJK-SY6	6AUJK-SV6
	ATLAS-X1 Shielded*	Component	6ASJK-RL6	6ASJK-RW6	6ASJK-RE6	6ASJK-RY6	6ASJK-RV6
	EXTREME UTP	Channel	6110G-RL6	6110G-RW6	6110G-RE6	6110G-RY6	6110G-RV6

DESCRIPTION		RATING	BLUE	WHITE	BLACK	ORANGE	IVORY
CAT 6	ATLAS-X1 UTP*	Component	61UJK-RL6	61UJK-RW6	61UJK-RE6	61UJK-RO6	61UJK-RI6
	ATLAS-X1 Shielded*	Component	61SJK-RL6	61SJK-RW6	61SJK-RE6	61SJK-RO6	61SJK-RI6
	EXTREME UTP	Component	61110-RL6	61110-RW6	61110-RE6	61110-RO6	61110-RI6
	EXTREME UTP, 25 pack	Component	61110-BL6	61110-BW6	61110-BE6	61110-BO6	61110-BI6
	EXTREME UTP, 150 pack	Component	61110-JL6	61110-JW6	61110-JE6	61110-JO6	61110-JI6
CAT 5E	EXTREME UTP	Component	5G110-RL5	5G110-RW5	5G110-RE5	5G110-RO5	5G110-RI5
	EXTREME UTP, 25 pack	Component	5G110-BL5	5G110-BW5	5G110-BE5	5G110-BO5	5G110-BI5
	GIGAMAX UTP	Channel	5G108-RL5	5G108-RW5	5G108-RE5	5G108-RO5	5G108-RI5
	GIGAMAX UTP, 25 pack	Channel	5G108-BL5	5G108-BW5	5G108-BE5	5G108-BO5	5G108-BI5

* = Shutter versions available, see catalog or visit leviton.com/ATLAS-X1

Note: See catalog or Leviton.com/NS for more options.

COPPER PATCH CORDS



	FT	RATING	BLUE	WHITE	BLACK	GRAY	YELLOW
CAT 6A HIGH-FLEX	1	Component	H6A10-01L	H6A10-01W	H6A10-01E	H6A10-01S	H6A10-01Y
	3	Component	H6A10-03L	H6A10-03W	H6A10-03E	H6A10-03S	H6A10-03Y
	5	Component	H6A10-05L	H6A10-05W	H6A10-05E	H6A10-05S	H6A10-05Y
	7	Component	H6A10-07L	H6A10-07W	H6A10-07E	H6A10-07S	H6A10-07Y
	10	Component	H6A10-10L	H6A10-10W	H6A10-10E	H6A10-10S	H6A10-10Y
	15	Component	H6A10-15L	H6A10-15W	H6A10-15E	H6A10-15S	H6A10-15Y
CAT 6A	20	Component	H6A10-20L	H6A10-20W	H6A10-20E	H6A10-20S	H6A10-20Y
	3	Component	6AS10-03L	6AS10-03W	6AS10-03E	6AS10-03S	6AS10-03Y
	5	Component	6AS10-05L	6AS10-05W	6AS10-05E	6AS10-05S	6AS10-05Y
	7	Component	6AS10-07L	6AS10-07W	6AS10-07E	6AS10-07S	6AS10-07Y
	10	Component	6AS10-10L	6AS10-10W	6AS10-10E	6AS10-10S	6AS10-10Y
	15	Component	6AS10-15L	6AS10-15W	6AS10-15E	6AS10-15S	6AS10-15Y
20	Component	6AS10-20L	6AS10-20W	6AS10-20E	6AS10-20S	6AS10-20Y	

See page 2 for Cat 6 patch cords

Note: See catalog or Leviton.com/NS for more options

COPPER PATCH CORDS



	FT	RATING	BLUE	WHITE	BLACK	GRAY	YELLOW
CAT 6 STANDARD	1	Component	6D460-01L	6D460-01W	6D460-01E	6D460-01S	6D460-01Y
	3	Component	6D460-03L	6D460-03W	6D460-03E	6D460-03S	6D460-03Y
	5	Component	6D460-05L	6D460-05W	6D460-05E	6D460-05S	6D460-05Y
	7	Component	6D460-07L	6D460-07W	6D460-07E	6D460-07S	6D460-07Y
	10	Component	6D460-10L	6D460-10W	6D460-10E	6D460-10S	6D460-10Y
	15	Component	6D460-15L	6D460-15W	6D460-15E	6D460-15S	6D460-15Y
	20	Component	6D460-20L	6D460-20W	6D460-20E	6D460-20S	6D460-20Y
CAT 6 HIGH-FLEX	1	Channel	6H460-01L	6H460-01W	6H460-01E	6H460-01S	6H460-01Y
	3	Channel	6H460-03L	6H460-03W	6H460-03E	6H460-03S	6H460-03Y
	5	Channel	6H460-05L	6H460-05W	6H460-05E	6H460-05S	6H460-05Y
	7	Channel	6H460-07L	6H460-07W	6H460-07E	6H460-07S	6H460-07Y
	10	Channel	6H460-10L	6H460-10W	6H460-10E	6H460-10S	6H460-10Y
	15	Channel	6H460-15L	6H460-15W	6H460-15E	6H460-15S	6H460-15Y
	20	Channel	6H460-20L	6H460-20W	6H460-20E	6H460-20S	6H460-20Y

See page 1 for Cat 6A patch cords.

Note: See catalog or Leviton.com/NS for more patch cord options.

E2XHD SNAP-IN CASSETTE PATCHING SYSTEM | COPPER AND FIBER OPTIC



1RU 48-Port Patch Panel



Standard Cassette



MPO to LC Cassettes

EMPTY HIGH-DENSITY PATCH PANELS	PART NO.
1RU 48-Port e2XHD Angled	E2X1A-S48
1RU 48-Port e2XHD Flat	E2X1F-S48

STANDARD CASSETTES	PART NO.
6-Port e2XHD Cassette, empty	E2XHD-BRK
12-Fiber, OS2, LC (blue), shuttered, adapter cassette	E2XLC-SBL
12-Fiber, OM3 and OM4, LC (aqua), shuttered, adapter cassette	E2XLC-SAQ
MPO passthrough, adapter cassette, four key-up/key-down adapters	E2XHD-4MP
MPO passthrough, adapter cassette, four key-up/key-up adapters	E2XHD-4MB

MAKE-TO-ORDER MPO CASSETTES				
FIBER TYPE	FIBER COUNT	CONNECTOR TYPE	MPO TYPE (REAR)	POLARITY
• OM3	• 8	• LC Shuttered	• 8F MPO (male) Base 8	• Method A
• OM4	• 12	• 8F MPO (female)	• 12F MPO (male) Base 12	• Method C
• OS2	• 24		• 24F MPO (male) Base 24	• Universal
				• Conversion

For ordering Cassettes, go to leviton.com/mto

ACCESSORIES	PART NO.
e2XHD Angled Panel Cover	E2XHD-COV
e2XHD Cassette Blank	E2XHD-BLK
Rear Cable Manager for Angled Panel, with cable management rings	E2XHD-CMB
Rear Cable Manager for Flat Panel, with cable management rings	E2X1F-CMB
QUICKPORT Connector Removal Tool	E2XHD-JRT
Universal OPT-X™ Clamp Kit, Single Cable Grommet (mounts to Rear Cable Manager)	5RCMP-KIT
Universal OPT-X Clamp Kit, Multiple Cable Grommet (mounts to Rear Cable Manager)	5RCMP-KT2
e2XHD Label Kit (4 pack)*	E2XHD-LBL

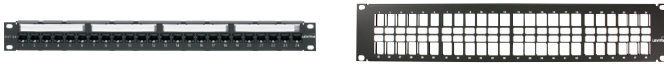
* = Label kit occupies one row of panel.

OneReach™ POE EXTENDER SYSTEM



Take data and PoE to all new distances by combining fiber cable for data transmission and copper cable for Power over Ethernet (PoE) in a single hybrid cable, OneReach can support cameras, emergency phones, and wireless access points at remote locations. The OneReach system is modular, allowing you to easily scale the system to meet your specific application requirements. Visit Leviton.com/OneReach for more information or call 1-800-722-2082 for configuration support.

FLAT UTP PATCH PANELS



DESCRIPTION		PART NO.
CAT 6A	1RU 24-Port Flat 110-Style	6A586-U24
	2RU 48-Port Flat 110-Style	6A586-U48
	2RU 48-Port Flat QUICKPORT [^]	6910G-U48
CAT 6	1RU 12-Port Flat 110-Style	69586-U12
	1RU 24-Port Flat 110-Style	69586-U24
	2RU 48-Port Flat 110-Style	69586-U48
	1RU 24-Port Flat QUICKPORT [^]	69270-U24
	2RU 48-Port Flat QUICKPORT [^]	69270-U48

DESCRIPTION		PART NO.
CAT 5E	1RU 12-Port Flat 110-Style	5G596-U12
	1RU 24-Port Flat 110-Style	5G596-U24
	2RU 48-Port Flat 110-Style	5G596-U48
	1RU 24-Port Flat QUICKPORT [^]	5G270-U24
EMPTY	2RU 48-Port Flat QUICKPORT [^]	5G270-U48
	1RU 24-Port Flat QUICKPORT	49255-H24
	1RU 24-Port Flat QUICKPORT, white	49255-W24
	1RU 48-Port Flat QUICKPORT	49255-Q48
	2RU 48-Port Flat QUICKPORT	49255-H48
	2RU 48-Port Flat QUICKPORT, Front-Loading	49455-48B

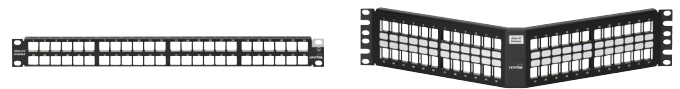
[^] = Black jacks included: Cat 6A (6110G-RE6), Cat 6 (61110-RE6), Cat 5e (5G110-RE5)
 Note: Cable management bars are sold separately for white patch panels.

ANGLED UTP PATCH PANELS



DESCRIPTION		PART NO.
CAT 6A	1RU 24-Port Angled 110-Style	6A587-U24
	1RU 48-Port Angled 110-Style	6A587-U48
CAT 6	1RU 24-Port Angled 110-Style	69587-U24
	2RU 48-Port Angled 110-Style	69587-U48
CAT 5E	1RU 24-Port Angled 110-Style	5G597-U24
	2RU 48-Port Angled 110-Style	5G597-U48
EMPTY	1RU 24-Port Angled QUICKPORT	49256-H24
	1RU 48-Port Angled QUICKPORT	49256-D48
	2RU 48-Port Angled QUICKPORT	49256-H48
	2RU 48-Port Angled QUICKPORT, white	49256-W8L

SHIELDED QUICKPORT PATCH PANELS



DESCRIPTION		PART NO.
Half RU 24-Port Flat QUICKPORT		4S255-4BH
1RU 24-Port Flat QUICKPORT		4S255-S24
1RU 48-Port Flat QUICKPORT		4S255-D48
1RU 48-Port Flat QUICKPORT, white		4S255-W48
2RU 48-Port Flat QUICKPORT		4S255-S48
1RU 24-Port Angled QUICKPORT		4S256-S24
2RU 48-Port Angled QUICKPORT		4S256-S48

Note: See page 1 for shielded QUICKPORT[™] Jacks.
 Cable management bars are sold separately for white patch panels.

PALM TERMINATION TOOL



DESCRIPTION	PART NO.
Palm Termination Tool for EXTREME [™] and GIGAMAX [™] Jacks	47615-PTT

PATCH BLOCKS AND LOW-PROFILE ZONE ENCLOSURE



DESCRIPTION	PART NO.
12-Port Cat 6 110-Style, with 89D	69586-U89
12-Port Cat 5e 110-Style, with 89D	5G596-U89
12-Port QUICKPORT, empty, without 89D	49255-Q89
QUICKPORT Mounting Bracket, 89D	40089-00D
24-Port Low-Profile Zone Enclosure, Black	49225-24E

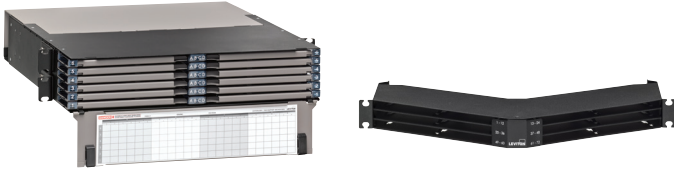
BERK-TEK[™] BULK COPPER CABLE



DESCRIPTION		RATING	BLUE	WHITE	GRAY
LANMARK [™] -6 U/UTP	1000 ft TEKPAK Pull-Box	CMP	10136226	10136230	11091258
	1000 ft TEKPAK Pull-Box	CMR	10136339	10136340	11091257
LANMARK-1000 U/UTP	1000 ft TEKPAK Pull-Box	CMP	10032094	10032092	11091087
	1000 ft TEKPAK Pull-Box	CMR	10032455	10032459	11096490
RDT U/UTP	1000 ft TEKPAK Pull-Box	CMP	11142454	11142628	11142571
	1000 ft TEKPAK Pull-Box	CMR	11142455	11142629	11142608
SST U/UTP	1000 ft TEKPAK Pull-Box	CMP	11142452	11142630	11142631
	1000 ft TEKPAK Pull-Box	CMR	11142453	11144798	11144808
FDT F/UTP	1000 ft Reel	CMP	11143338	11143337	11143339

For other colors or packaging, contact Customer Service at (800) 722-2082

OPT-X™ HDX PLATFORM | FIBER ENCLOSURES, ADAPTER PLATES, MODULES, CASSETTES, AND ACCESSORIES



UHD RACK-MOUNT ENCLOSURES & PANELS	PART NO.
1RU Enclosure, empty, accepts 12 plates, modules, or cassettes	5R1UD-S12
2RU Enclosure, empty, accepts 24 plates, modules, or cassettes	5R2UD-S24
4RU UHD Enclosure, empty, accepts 48 plates, modules, or cassettes	5R4UD-S48
1RU Angled Panel, empty, accepts 12 plates, modules, or cassettes	HDX1A-144
1RU Flat Panel, empty, accepts 12 plates, modules, or cassettes	HDX1F-144



HDX RACK-MOUNT ENCLOSURES & PANELS	PART NO.
1RU HDX Enclosure, empty, accepts 8 plates, modules, or cassettes	5R1UD-S08
2RU HDX Enclosure, empty, accepts 16 plates, modules, or cassettes	5R2UD-S16
3RU HDX Enclosure, empty, accepts 24 plates, modules, or cassettes	5R3UD-S24
4RU HDX Enclosure, empty, accepts 32 plates, modules, or cassettes	5R4UD-S32
1RU HDX Angled Panel, empty, accepts 8 plates, modules, or cassettes	HDX1U-A96
1RU OPT-X HDX Flat Panel, empty, accepts 8 plates, modules, or cassettes	HDX1U-F96

See catalog or Leviton.com/NS for more options.

ACCESSORIES	PART NO.
Universal OPT-X Clamp Kit, Single Cable Grommet (mounts to Rear Cable Manager)	5RCMP-KIT
Universal OPT-X Clamp Kit, Multiple Cable Grommet (mounts to Rear Cable Manager)	5RCMP-KT2
Universal OPT-X Clamp Kit, Single and Multiple Cable Grommet (for rack mounting)	5RCMR-KIT
Brush Guard (bag of 2)	5RBSH-*UN
ORU Universal Patch Cord Cable Manager	5RCMT-VFG
1RU Universal Patch Cord Cable Manager	5R1UX-CMT
2RU Universal Patch Cord Cable Manager	5R2UX-CMT

* = 1RU (1), 2RU (2)



HDX ADAPTER PLATES	PART NO.
Plate, OM3 and OM4, Quad LC Shuttered (aqua), 12-Fiber, Zirconia Ceramic Sleeve	5FUHD-SQL
Plate, OS2, Quad LC Shuttered (blue), 12 Fibers, zirconia ceramic sleeve	5FUHD-SLL
Plate, 3 Duplex MPO Adapters (black), keyed up to keyed up	5FUHD-6MB
Plate, 3 Duplex MPO Adapters (black), keyed up to keyed down	5FUHD-6MP
Plate, blank (black)	5FUHD-BLK



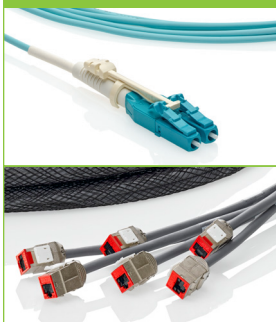
MAKE-TO-ORDER HDX SPLICE SPLICE MODULES	PART NO.
12-Fiber HDX Splice Module, OM4 LC Shuttered (aqua)	SPLCH-12AQ
12-Fiber HDX Splice Module, OS2 LC Shuttered (blue)	SPLCH-12BL
12-Fiber HDX Splice Module, OS2 LC/APC Shuttered (green)	SPLCH-12GN
36-Fiber HDX Splice Module, OM4 MPO (male)	SPMPH-MMPN
36-Fiber HDX Splice Module, OS2 MPO (male)	SPMPH-SMPN
36-Fiber HDX Splice Module, OM4 MPO (female)	SPMPH-MMPN
36-Fiber HDX Splice Module, OS2 MPO (female)	SPMPH-SMUP



MAKE-TO-ORDER MPO CASSETTES				
FIBER TYPE	FIBER COUNT	CONNECTOR TYPE	MPO TYPE (REAR)	POLARITY
• OM3	• 8	• LC Non-Shuttered	• 8F MPO (male) Base 8	• Method A
• OM4	• 12	• 8F MPO (female)	• 12F MPO (male) Base 12	• Method C
• OS2	• 24	• 8F MPO (male)	• 24F MPO (male) Base 24	• Conversion
			• 8F MPO (female) Base 8	• Universal
			• 12F MPO (female) Base 12	
			• 24F MPO (female) Base 24	

For ordering Cassettes, go to leviton.com/mtc

CUSTOM SYSTEMS AND PRODUCTS



Customize many Leviton products online using our make-to-order (MTO) program. Most orders ship within two weeks, one of the fastest turn around times in the industry. To configure products, go to Leviton.com/MTO or call 1-800-722-2082.

For a complete collection of all Leviton Network Solutions products, see our Network Solutions Catalog or visit Leviton.com/NS.



- Copper Patch Cords
- Pre-Terminated Trunks
- Harnesses
- Fiber Patch Cords & Pigtails
- Plug-n-Play Cassettes
- e2XHD Patching System

OPT-X™ SDX PLATFORM | FIBER ENCLOSURES, ADAPTER PLATES, MODULES, CASSETTES, AND ACCESSORIES



OPT-X™ 2000i SDX RACK-MOUNT ENCLOSURES	PART NO.
1RU, empty, sliding tray, accepts 3 adapter plates	5R1UH-S03
2RU, empty, sliding tray, accepts 6 adapter plates	5R2UH-S06
4RU, empty, sliding tray, accepts 12 adapter plates	5R4UH-S12



OPT-X 1000i SDX RACK-MOUNT ENCLOSURES	PART NO.
1RU, empty, accepts 3 adapter plates	5R1UM-F03
1RU, empty, with sliding tray, accepts 3 adapter plates	5R1UM-S03
2RU, empty, accepts 6 adapter plates	5R2UM-F06
2RU, empty, with sliding tray, accepts 6 adapter plates	5R2UM-S06
3RU, empty, horizontal, accepts 9 adapter plates	5R3UM-F09
3RU, empty, accepts 12 adapter plates	5R3UM-F12
4RU, empty, accepts 12 adapter plates	5R4UM-F12
4RU, empty, horizontal, accepts 15 adapter plates	5R4UM-F15



OPT-X 500i SDX RACK-MOUNT ENCLOSURES	PART NO.
1RU, empty, accepts 3 adapter plates	5R1UL-F03
2RU, empty, accepts 6 adapter plates	5R2UL-F06
3RU, empty, accepts 12 adapter plates	5R3UL-F12



OPT-X SDX WALL-MOUNT ENCLOSURES	PART NO.
Mini, empty, accepts 1 adapter plate	5WMNT-01C
Small, empty, accepts 2 adapter plates	5WSML-02C
Medium, empty, accepts 4 adapter plates	5WMED-04C
Large, empty, accepts 12 adapter plates	5WLRG-12C

ACCESSORIES	PART NO.
Fiber Cable Management Quarter-Round Ring Kit (bag of 4) use with 2000i RM enclosures	5R100-14R
OPT-X 1000i Lock and Key (also for use with wall-mount enclosure)	5L000-KAL
OPT-X Universal Patch Cord Management Tray, 1RU	5R1UX-CMT
OPT-X Universal Patch Cord Management Tray, 2RU	5R2UX-CMT



SDX MOLDED ADAPTER PLATES	PART NO.
Plate, Duplex LC, 12-Fiber	5F100-2xL
Plate, Quad LC, 24-Fiber	5F100-4xL
Plate, Duplex SC, 6-Fiber	5F100-6xC
Plate, Duplex SC, 12-Fiber	5F100-2xC
Plate (black), ST MM/SM, 6-Fiber	5F100-6MT
Plate (black), ST MM/SM, 8-Fiber	5F100-8MT
Plate (black), Blank	5F100-PLT

x = Fiber Type: I (OM1, Beige), Q (OM3/OM4, Aqua), L (OS2, Blue), V (OS2 SC/APC, Green)



SDX METAL ADAPTER PLATES	PART NO.
Plate, Duplex Shuttered LC, 12-Fiber	5F100-S2x
Plate, Quad Shuttered LC, 24-Fiber	5F100-S4x
Plate (black), simplex MPO, key up/key down	5F100-*MP
Plate (black), simplex MPO, key up/key up	5F100-*MB
Plate (black), 6-position QUICKPORT™, empty	5F100-6QP

* = Fibers: (6), (8)

x = Fiber Type: I (OM1, Beige), Q (OM3/OM4, Aqua), L (OS2, Blue), V (OS2 LC/APC, Green), M (OM4, Heather Violet)



SDX SPLICE MODULES	PART NO.
12-Fiber, Duplex LC Shuttered	SPLCS-2xL
24-Fiber, Quad LC Shuttered	SPLCS-4xL
12-Fiber, Duplex SC	SPSCS-2yC
6-Port, OM4 Simplex MPO (Male)	SPMPS-MMP
6-Port, OS2 Simplex MPO (Male)	SPMPS-SMP

x = Fiber Type: A (OM3, Aqua), Q (OM4, Aqua), M (OM4, Heather Violet), L (OS2, Blue), V (OS2 LC/APC, Green)

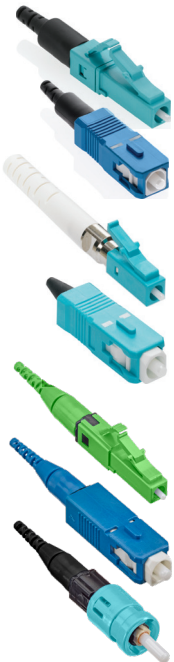
y = Fiber Type: Q (OM4, Aqua), L (OS2, Blue), V (OS2 LC/APC, Green)



MAKE-TO-ORDER MPO CASSETTES

FIBER TYPE	FIBER COUNT	CONNECTOR TYPE	MPO TYPE (REAR)	POLARITY
• OM3	• 12	• LC Shuttered	• 12F MPO (male) Base 12	• MPO Method A
• OM4	• 24	• LC/APC Shuttered	• 12F MPO (female) Base 12	• MPO Method C
• OS2				• Universal

For ordering Cassettes, go to leviton.com/mtc

FIBER OPTIC CONNECTORS | FIELD INSTALLABLE CONNECTORS*


FASTCAM™ (PRE-POLISHED STYLE)	OM1 62.5μM MM	OM3/4 50μM LOMM	OS2 SM
LC	49991-MLC	49991-LLC	49991-SLC
SC	49991-MSC	49991-LSC	49991-SSC
SC/APC	—	—	49991-ASC
ST	49991-MST	49991-LST	49991-SST

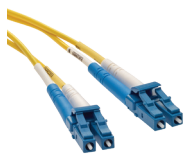
FAST-CURE™ (ADHESIVE STYLE)	OM1 50+62.5μM MM	OM3/4 50μM LOMM	OS2 SM
LC (with 3mm boot)	49990-ML2	49990-LL2	49990-SL2
LC (with .9mm boot)	49990-MDL	49990-LDL	49990-SDL
SC	49990-MSC	49990-LSC	49990-SSC
ST	49990-MST	49990-MST	49990-SST

FASTSPLICE™ (FUSION SPLICE-ON CONNECTORS)				
DESCRIPTION (900 μm 12-PACK)	APC OS2 (GREEN)	OS2 SINGLE-MODE (BLUE)	OM1 MULTIMODE (BEIGE)	OM3 & OM4 LOMM (AQUA)
LC FASTSPLICE Connector	499LC-GN9	499LC-BL9	499LC-BG9	499LC-AQ9
SC FASTSPLICE Connector	499SC-GN9	499SC-BL9	499SC-BG9	499SC-AQ9
ST FASTSPLICE Connector		499ST-BL9	499ST-BG9	499ST-AQ9
FASTSPLICE Universal LC/ST/SC Ferrule Holder, 10-pack				49886-SH1

* For fiber connector tool kits and consumables, visit Leviton.com/fiber

ECONOMY SERIES FIBER OPTIC PIGTAILS (3 METERS)


DESCRIPTION	LC	SC	ST	SC / APC	LC / APC
OM1, Individual Pigtails	62PLC-M03	62PSC-M03	62PST-M03	—	—
OM3, Individual pigtails	5LPLC-M03	5LPSC-M03	—	—	—
OM4, Individual pigtails	54PLC-M03	54PSC-M03	—	—	—
OS2, Individual pigtails	UPPLC-S03	UPPSC-S03	UPPST-S03	APPSC-S03	APPLC-S03

ECONOMY SERIES FIBER OPTIC OFNR DUPLEX PATCH CORDS*


DESCRIPTION	1 METER	2 METERS	3 METERS	5 METERS	10 METERS
LC-LC, OM3	5LDLC-M01	5LDLC-M02	5LDLC-M03	5LDLC-M05	5LDLC-M10
SC-SC, OM3	5LDSC-M01	5LDSC-M02	5LDSC-M03	5LDSC-M05	5LDSC-M10
LC-SC, OM3	5LDCL-M01	5LDCL-M02	5LDCL-M03	5LDCL-M05	5LDCL-M10
LC-LC, OM4	54DLC-M01	54DLC-M02	54DLC-M03	54DLC-M05	54DLC-M10
LC-SC, OM4	54DCL-M01	54DCL-M02	54DCL-M03	54DCL-M05	54DCL-M10
LC-LC, OS2	UPDLC-S01	UPDLC-S02	UPDLC-S03	UPDLC-S05	UPDLC-S10
SC-SC, OS2	UPDSC-S01	UPDSC-S02	UPDSC-S03	UPDSC-S05	UPDSC-S10
LC-SC, OS2	UPDCL-S01	UPDCL-S02	UPDCL-S03	UPDCL-S05	UPDCL-S10

Note: For ordering Premium Series Patch Cords, go to leviton.com/MTO.

QUICKPORT™ FIBER ADAPTERS


DESCRIPTION	WHITE	IVORY	SLATE	BLACK
ST, MM/SIM, zirc. ceramic	41084-SWZ	41084-SIZ	41084-SGZ	41084-SEZ
SC, MM/SM, zirc. ceramic	41085-SWC	41085-SIC	41085-SGC	41085-SEC
LC shuttered, MM, (beige) zirc. bronze	41086-MLW	41086-MLI	41086-MLG	41086-MLE
LC shuttered, LOMM, (aqua) zirc. ceramic	41086-LLW	41086-LLI	41086-LLG	41086-LLE
LC shuttered, SM, (blue) zirc. ceramic	41086-SLW	41086-SLI	41086-SLG	41086-SLE

Note: Contact Customer Service for other QUICKPORT Bezel colors.

BERK-TEK™ BULK FIBER CABLE

INDOOR/OUTDOOR, PREMISE DISTRIBUTION, TIGHT BUFFER, PLENUM			
FIBER COUNT	OM3	OM4	OS2
6 to 24-Fiber	PDPxxxEB3010/25-I/O-C4(AQU)	PDPxxxFB3010/F5-I/O-C4(AQU)	PDPxxxAB0707-I/O-C4(YEL)
36 to 144-Fiber	PDP12BxxxEB3010/25-I/O-C4(AQU)	PDP12BxxxFB3010/F5-I/O-C4(AQU)	PDP12BxxxAB0707-I/O-C4(YEL)

INDOOR/OUTDOOR, PREMISE DISTRIBUTION, TIGHT BUFFER, PLENUM WITH ARMOR-TEK™			
FIBER COUNT	OM3	OM4	OS2
6 to 24-Fiber	PDPKxxxEB3010/25-I/O-C4C5(AQU)	PDPKxxxFB3010/F5-I/O-C4C5(AQU)	PDPKxxxAB0707-I/O-C4C5(YEL)
36 to 144-Fiber	PDPK12BxxxEB3010/25-I/O-C4C5(AQU)	PDPK12BxxxFB3010/F5-I/O-C4C5(AQU)	PDPK12BxxxAB0707-I/O-C4C5(YEL)

ADVENTUM™ INDOOR/OUTDOOR PLENUM LOOSE TUBE			
FIBER COUNT	OM3	OM4	OS2
6 to 12-Fiber	LTPxxxEB3010/25	LTPxxxFB3010/F5	LTPxxxAB0403
24 to 432-Fiber	LTP12BxxxEB3010/25	LTP12BxxxFB3010/F5	LTP12BxxxAB0403

ADVENTUM™ INDOOR/OUTDOOR PLENUM LOOSE TUBE WITH ARMOR-TEK			
FIBER COUNT	OM3	OM4	OS2
6 to 12-Fiber	LTPKxxxEB3010/25	LTPKxxxFB3010/F5	LTPKxxxAB0403
24 to 432-Fiber	LTPK12BxxxEB3010/25	LTPK12BxxxFB3010/F5	LTPK12BxxxAB0403

xxx = Fiber Count: 006 (6-Fiber), 012 (12-Fiber), 024 (24-Fiber), 036 (36-Fiber), 048 (48-Fiber), 072 (72-Fiber) 096 (96-Fiber), 144 (144-Fiber), 288 (288-Fiber), 432 (432-Fiber)

FIBER OPTIC TOOL KITS AND ACCESSORIES

DESCRIPTION	PART NO.
Fan-Out Kit 24", Length 12-Fiber	49887-12S
Fan-Out Kit 36" Length, 12-Fiber	49887-12L

DESCRIPTION	PART NO.
12-Fiber Mini, 3.74" x 5.59" x .39", (Heat Shrink Splice Sleeves Included)	T5PLS-12F
24-Fiber H.D., 4.5" x 7.63" x .43" (Heat Shrink Splice Sleeves Included)	T5PLS-24F
Splice Tray Mounting Hardware Kit	SPLMT-HKT

QUICKPORT™ WALLPLATES, SINGLE-GANG/DUAL-GANG | ACCEPTS QUICKPORT JACKS

DESCRIPTION		WHITE	IVORY	GRAY	BLACK	STAINLESS STEEL
1-PORT	Single-Gang	41080-1WP	41080-1IP	41080-1GP	41080-1EP	43080-1S1
	Single-Gang Midway	41091-1WN	41091-1IN	—	—	—
	Single-Gang with Designation Windows	42080-1WS	42080-1IS	42080-1GS	42080-1ES	43080-1L1
	Dual-Gang with Designation Windows	42080-1WP	42080-1IP	42080-1GP	42080-1EP	—
2-PORT	Single-Gang	41080-2WP	41080-2IP	41080-2GP	41080-2EP	43080-1S2
	Single-Gang Midway	41091-2WN	41091-2IN	—	—	—
	Single-Gang with Designation Windows	42080-2WS	42080-2IS	42080-2GS	42080-2ES	—
	Single-Gang Angled with ID Windows	—	—	—	—	43081-1L2
	Single-Gang QuickPlate Tempo with ID Windows	42090-2WS	—	—	—	—
	Dual-Gang	—	—	—	—	43080-2S2
3-PORT	Dual-Gang with Designation Windows	42080-2WP	42080-2IP	42080-2GP	42080-2EP	—
	Single-Gang	41080-3WP	41080-3IP	41080-3GP	41080-3EP	43080-1S3
	Single-Gang Midway	41091-3WN	41091-3IN	—	—	—
	Single-Gang with Designation Windows	42080-3WS	42080-3IS	42080-3GS	42080-3ES	43080-1L3
4-PORT	Dual-Gang with Designation Windows	42080-3WP	42080-3IP	42080-3GP	42080-3EP	—
	Single-Gang	41080-4WP	41080-4IP	41080-4GP	41080-4EP	43080-1S4
	Single-Gang Midway	41091-4WN	41091-4IN	—	—	—
	Single-Gang with Designation Windows	42080-4WS	42080-4IS	42080-4GS	42080-4ES	43080-1L4
	Single-Gang Angled with ID Windows	—	—	—	—	43081-1L4
	Single-Gang QuickPlate Tempo with ID Windows	42090-4WS	—	—	—	—
	Dual-Gang	—	—	—	—	43080-2S4
	Dual-Gang with Designation Windows	42080-4WP	42080-4IP	42080-4GP	42080-4EP	43080-2L4
6-PORT	Dual-Gang Angled with ID Windows	—	—	—	—	43081-2L4
	Single-Gang	41080-6WP	41080-6IP	41080-6GP	41080-6EP	43080-1S6
	Single-Gang Midway	41091-6WN	41091-6IN	—	—	—
	Single-Gang with Designation Windows	42080-6WS	42080-6IS	42080-6GS	42080-6ES	43080-1L6
8-PORT	Dual-Gang with Designation Windows	42080-6WP	42080-6IP	42080-6GP	42080-6EP	43080-2L6
	Dual-Gang	—	—	—	—	43080-2S8
	Dual-Gang with Designation Windows	42080-8WP	42080-8IP	42080-8GP	42080-8EP	43080-2L8
	Dual-Gang Angled with ID Windows	—	—	—	—	43081-2L8
12-PORT	Dual-Gang	—	—	—	—	43080-5L2
	Dual-Gang with ID Windows	—	—	—	—	43080-1L2

QUICKPLATE™
Tempo

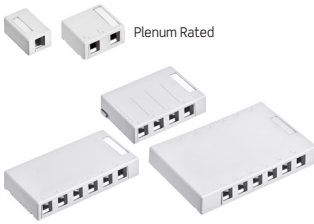
Note: See catalog or Leviton.com/NS for more options.

SURFACE-MOUNT BACKBOXES



DESCRIPTION	WHITE	IVORY	GRAY	BLACK
Single-Gang, (Deep - 1.89")	42777-1WA	42777-1IA	42777-1GA	42777-1EA
Single-Gang, (Shallow - 1.45")	42777-1WB	42777-1IB	42777-1GB	42777-1EB
Dual-Gang, (Deep - 1.89")	42777-2WA	42777-2IA	42777-2GA	42777-2EA

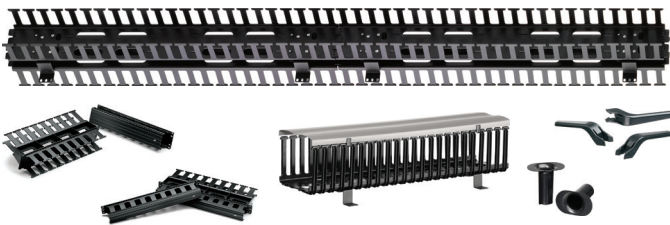
QUICKPORT SURFACE-MOUNT BOXES



DESCRIPTION	WHITE	IVORY	GRAY	BLACK
1-Port	41089-1WP	41089-1IP	41089-1GP	41089-1EP
2-Port	41089-2WP	41089-2IP	41089-2GP	41089-2EP
2-Port for Shielded	4S089-2WP	4S089-2IP	—	—
4-Port	41089-4WP	41089-4IP	41089-4GP	41089-4EP
6-Port	41089-6WP	41089-6IP	41089-6GP	41089-6EP
12-Port	41089-12W	41089-12I	41089-12G	41089-12E

NOTE: 2-Port includes blank for 1 port.

VERSI-DUCT™ CABLE MANAGEMENT



DESCRIPTION	PART NO.
Vertical Front only, 40" length	4940L-VFO
Vertical Front and Rear, 40" length	4940L-VFR
Vertical Front only, 80" length	4980L-VFO
Vertical Front and Rear, 80" length	4980L-VFR
Mounting Brackets, 5" Channel	49265-BKT
Vertical Designer Cover, 5" Channel, Gray	59265-5DC
Horizontal Front only Duct, 2RU	492RU-HFO
Horizontal Front and Rear Duct, 2RU	492RU-HFR
Horizontal Front only Duct, 1RU	491RU-HFO
Horizontal Front and Rear, 1RU	491RU-HFR
Horizontal Designer Cover, 1RU, Snap-On, Gray	49265-DC1
Horizontal Designer Cover, 2RU, Snap-On, Gray	49265-DC2
Vertical Front only w/ standard hinged black cover, 80" length	8980L-VFO
Vertical Front and Rear w/ standard hinged black cover, 80" length	8980L-VFR
Vertical 40" Designer Cover, 8", Gray (set of 2)	89265-8DC
Vertical Center Mounting Bracket, 8" Channel	89265-BKT
Vertical Cable Retainer, 8" Channel (bag of 6)	89265-WR1
Vertical Slack Loop Organizer, 8" Channel (2 per package)	89265-SL1

VELCRO® BRAND CABLE FASTENERS



VELCRO® is a registered trademark of Velcro IP Holdings LLC. Used with permission.

DESCRIPTION	PART NO.
Bulk Roll, 75', Blue	43115-75L
Bulk Roll, 75', Yellow	43115-75Y
Bulk Roll, 75', Orange	43115-75O
Bulk Roll, 75', Plenum-Rated Maroon	43115-75P
Bulk Roll, 600', Black	43115-600
SoftCinch Lite, 75', Black	4S115-75E

CABLE MANAGEMENT



DESCRIPTION	PART NO.
Rear Cable Management Bar	49005-CMB
Rack-Mounted Rear Cable Management Bar	49006-RMB
High-Density Cable Management Bar	49005-DMB
Recessed Cable Manager	49253-RCM
Horizontal Patch Cord Organizer, 2RU, 4" Rings	49253-BCM
Horizontal Patch Cord Organizer, 1RU, 4" Rings	49253-LPM
Combo Front/Rear Patch Cord Manager	49252-PCM
3" Vertical Manager Ring	49260-MR3
6" Vertical Manager Ring	49260-MR6
Hinged Wall-Mount Bracket, 2RU	49251-W62
e2XHD Rear Cable Manager for Angled Panel, with fiber storage rings (four 1/4" rings)	E2XHD-CMB
e2XHD Rear Cable Manager for Flat Panel, with fiber storage rings (four 1/4" rings)	E2X1F-CMB

USA
Network Solutions Headquarters
+1 (800) 722 2082
infoUSA@leviton.com

Leviton Cable (Manufactured by Berk-Tek)
+1 (800) 237 5835 | infoUSA@leviton.com

Asia Pacific
+852 3620 2602
infoAPAC@leviton.com

Canada
+1 (800) 461 2002
infoCanada@leviton.com

Europe
+44 (0) 1592 772124
infoEurope@leviton.com

Latin America
MX: +52 (55) 2128 6286
LATAM: +52 (55) 2333 5963
infoLATAM@leviton.com

Middle East & Africa
+971 (4) 247 9800
infoMEA@leviton.com

NETWORK SOLUTIONS PRODUCTS ARE AVAILABLE WORLDWIDE IN OVER 100 COUNTRIES. VISIT US ONLINE AT LEVITON.COM/NS TO LEARN MORE.