

CLEANING INSTRUCTIONS

ENGLISH

Description

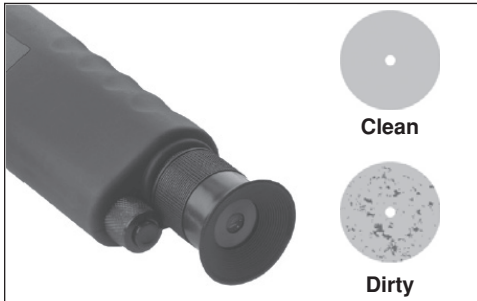
In a fiber optic network, a clean mated pair can make the difference between high performance and network disruption. Protect your investment and make sure you get the network performance you expect when you inspect and clean before you connect.

Recommended Cleaning Tools:

- Refer to the Recommended Tools and Consumables table for Leviton products.
- Many other helpful cleaning tools and apparatus from various manufacturers are available such as: video inspection probes, video microscopes, fiber optic solvent pens, swabs, wipes, and cleaning fluids. Isopropyl Alcohol (IPA) of less than 99% purity should not be used.
- See Leviton Applications Note NSAN-15-0021-08-09-16 for more information on Wet-to-Dry Cleaning.

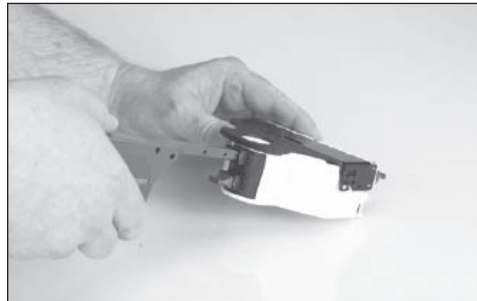
| Recommended Tools and Consumables | |
|---|--|
| Tool | Cat. No. |
| 200x Inspection Scope (w/ SC adapter) | 49886-FSP |
| LC Scope Adapter | 49886-LCS |
| Duplex LC Scope Adapter | 49886-LCD |
| MTP [®] Scope Adapter | 49886-MCS |
| MTP [®] Cassette Cleaning Tool | 49886-MCT |
| MTP [®] Cleaning Tool | 49886-UxT ("F" for Female, "M" for Male) |
| LC 1.25 mm Cleaning Tool | 49886-LCT |
| SC/ST 2.5 mm Cleaning Tool | 49886-SCT |
| Lint Free Wipes (100 pk) | 49886-DWP |

1. Inspect.



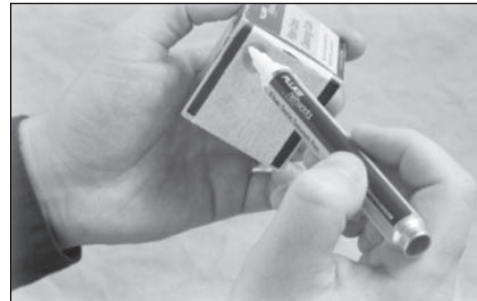
Visually inspect each mated pair. Use a 200X field microscope or video scope to verify end face cleanliness. If contamination is present, clean and re-inspect each mated pair before connection.

2. Clean and inspect.

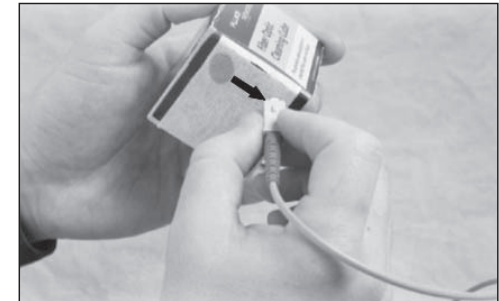


Clean all components in each mated pair before connection. This includes the connectors on all trunk assemblies, patch cords, ports of a cassette or adapter plate.

3. Clean using wet-to-dry (if needed).



a. Apply cleaning solution to a lint free wipe.



b. Contact the ferrule end face to the wet area and gently drag to the dry area of the wipe.

3. Clean using wet-to-dry (if needed). (Continued)

- c. Wait approximately 10 seconds and then perform a dry clean with a cleaning tool (see Recommended Tools and Consumables above).
- d. Visually inspect the end face and if necessary, repeat cleaning using wet-to-dry for all affected connectors.

4. Inspect.

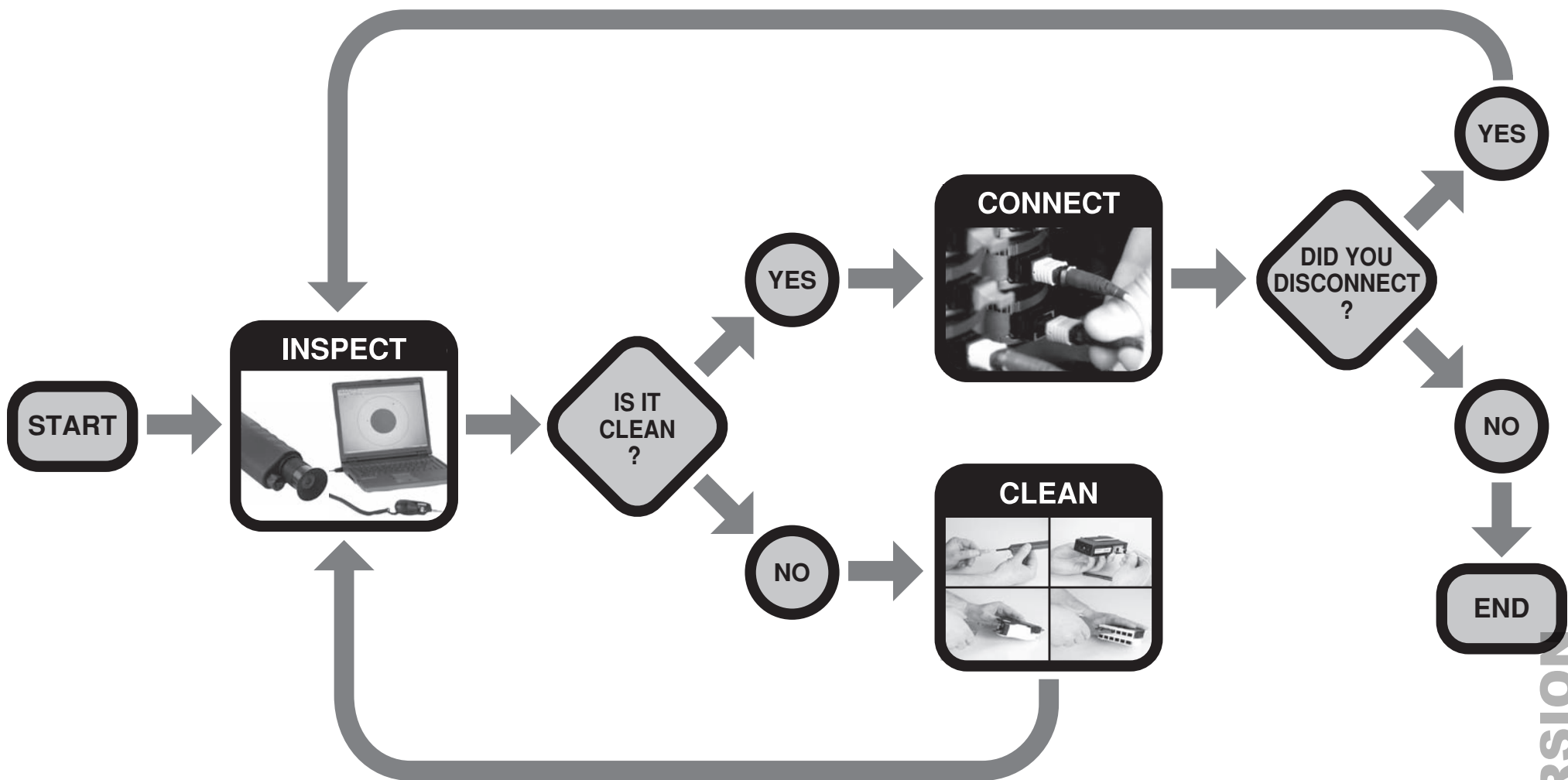
If the mated pair is disconnected, re-clean and re-inspect before reinsertion.

5. Connect.



Make each connection immediately after successful visual inspection of the mated pair.

Fiber Optic Cleaning Procedure



IMPORTANT INFORMATION:

Per ANSI/TIA 568.3-D, all fiber optic assemblies, test jumpers and the ports under test should be inspected, cleaned and free of damage in accordance with IEC-61300-3-35 which sets the requirements for connector quality. Adherence to this standard and best cleaning practices during and after installation is required to meet all Leviton product warranty criteria.

Leviton and Leviton Block & Design are trademarks of Leviton Manufacturing Co., Inc. and are registered trademarks in many countries throughout the world. All other trademarks are the property of their respective owners and used for informational purposes only.

For more information on fiber optic cleaning and inspection products offered from Leviton, visit www.leviton.com/CLIC.
For questions or assistance, please contact Leviton Network Solutions Support at 800.824.3005 or appeng@leviton.com.