

Application Note: Using Leviton Splice Tray Hardware Kit

APPLICATION

Fusion splicing of cables to one another or to factory terminated pigtails is a common and ever-expanding termination option in enterprise and data center environments. Properly securing splice trays after termination provides the necessary support and cable routing management to avoid stress or damage due to inadvertent movement and snagging. Leviton provides mounting options that can be used separately or simultaneously to properly secure splice trays to various wall and rack mount enclosures

This Applications Note provides information and recommendations for compatibility and installation of the Splice Tray Mounting Hardware Kit (SPLMT-HKT) within Leviton devices.

SPLICE TRAY MOUNTING HARDWARE KIT

The Splice Tray Mounting Hardware kit is used to secure all Leviton splice trays. Components include:

- (2) Stitched End Velcro® Wrap – 15" x 5/8"
- (1) 6-32 Nylon Threaded Rod – 6 inches
- (1) 6-32 Nylon Knurled Thumb Nut
- (1) 10-32 Pan Head Screw – 5.5 inches
- (1) 10-32 Pan Head Screw – 2.5 inches
- (1) 10-32 Pan Head Screw – 1.5 inches
- (1) 10-32 Wing Nut
- (1) #10 Flat Washer



SPLMT-HKT

Application Note ID:
NS-AN-21-0011-11-15-21

Date:
11-15-21

Product Line:
Fiber Optics

Part Numbers Affected:
HDX Fiber Distribution Frame
SDX Enclosures (Rack)
SDX Enclosures (Wall)

COMPATIBLE LEVITON DEVICES

The Splice Tray Mounting Hardware Kit is compatible with all Leviton Splice Trays. Use the following table to determine which Kit component is applicable to a selected device.

Rack Devices	Part Number(s)	Qty Kits Req'd	6-32 Rod	10-32 Screw 1.5"	10-32 Screw 2.5"	10-32 Screw 5.5"	Velcro
SDX 500i 1RU	5R1UL-F03	1	✓				✓
SDX 500i 2RU	5R2UL-F06	1	✓				✓
SDX 500i 3RU	5R3UL-F12	1	✓				✓
SDX 1000i 1RU	5R1UM-x03	1	✓				✓
SDX 1000i 2RU	5R2UM-x06	1	✓				✓
SDX 1000i 3RU	5R3UM-Fxx	1	✓				✓
SDX 1000i 4RU	5R4UM-Fxx	1	✓				✓
SDX 2000i 1RU	5R1UH-x03	1	✓				✓
SDX 2000i 2RU	5R2UH-x06	1	✓				✓
SDX 2000i 4RU	5R4UH-x12	1	✓				✓
HDX Frame	F3168-SPD*	3					✓

*NOTE: F3168-SPD IS PROVIDED WITH 6-32 SCREWS FOR EACH DECK TRAY, BULK VELCRO MAY ALSO BE USED

Wall Devices	Part Number(s)	Qty Kits Req'd	6-32 Rod	10-32 Screw 1.5"	10-32 Screw 2.5"	10-32 Screw 5.5"	Velcro
SDX Small Wall Mount	5WSML-02C	1		✓			✓
SDX Med Wall Mount	5WMED-04C	1		✓	✓		✓
SDX Lrg Wall Mount	5WLRG-12C	1 or 2		✓	✓	✓	✓

INSTALLATION AND USE

Hardware Kits are designed to provide mounting and securing solutions in several Leviton devices. The mounting method is very similar in each device.

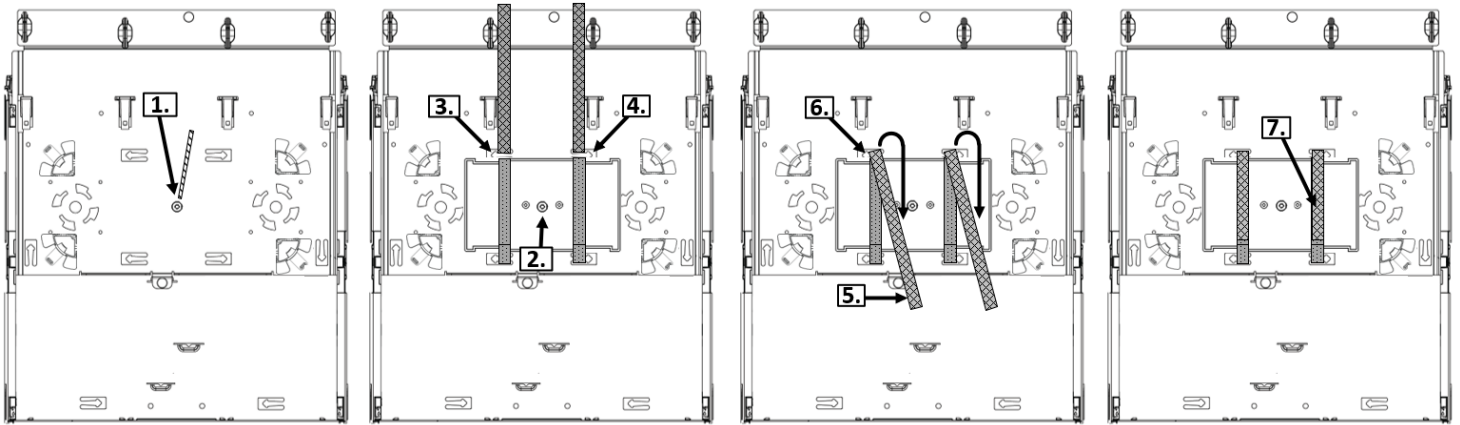
- Threaded Rod or screw secures splice trays to the device
- Velcro (Hook and Loop) ties are also used to keep splice trays secure and also keep trays from rotating when installed vertically, upside down or when gentle bend radius pressure is applied from cable routing.

EXAMPLES OF CORRECT INSTALLATION

SDX RACK MOUNT ENCLOSURES

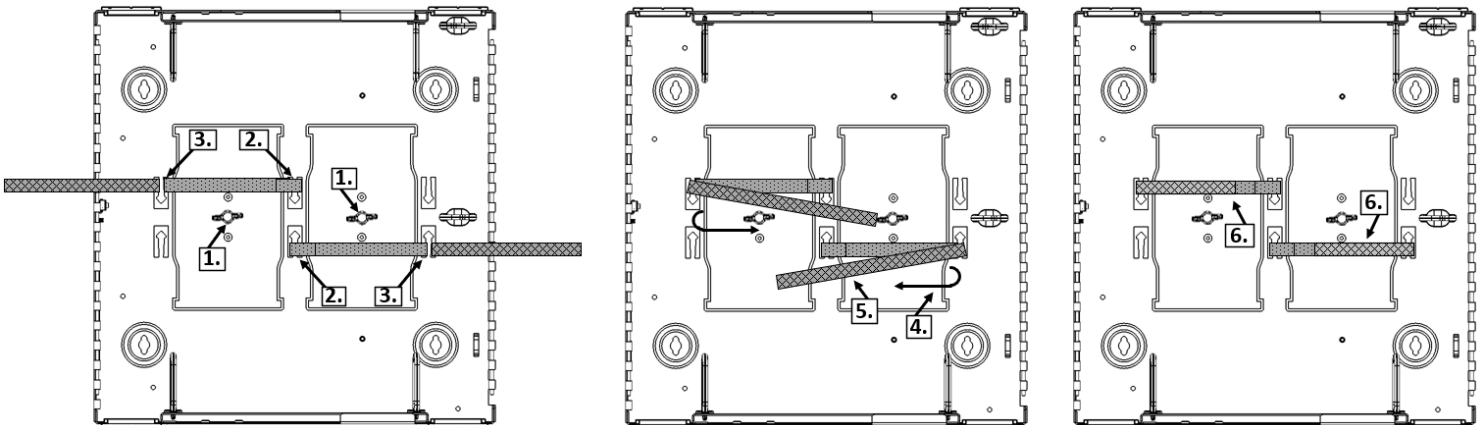
When used in an SDX Enclosures, a 6-32 threaded post and (4) arrow lances are provided in the enclosure base or sliding tray depending on model. Place the splice tray(s) over the threaded post. Install the threaded plastic rod into the post and secure with the Knurled nut. Flush cut any excess threaded rod. Install the hook and loop assemblies as shown in the image below. Trim any excess hook and loop tail.

NOTE: When installing the maximum allowable molded splice trays in SDX enclosures, only the top lid should be installed.



SDX WALL MOUNT ENCLOSURES

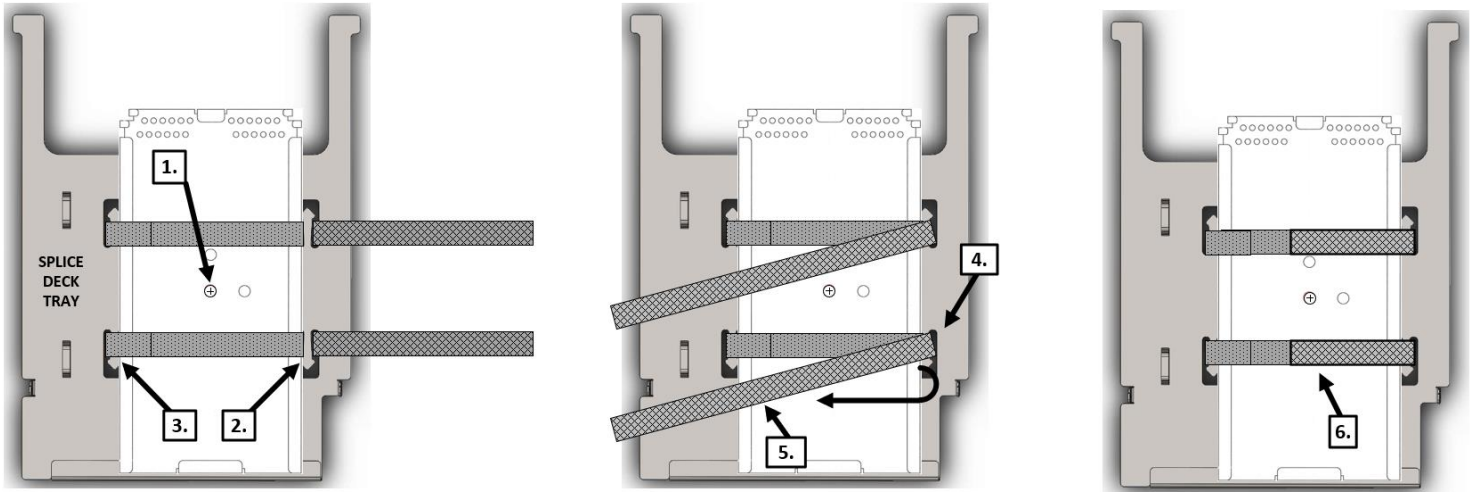
When using an SDX Wall Mount Enclosure, a 10-32 threaded hole and either (2) or (4) arrow lances are provided in the enclosure base depending on model. Before mounting the enclosure to the wall, select the proper 10-32 threaded screw for the number of splice trays to be used. Install the screw from the rear of the enclosure through the threaded hole to hand tightness. Place the splice tray(s) over the threaded post and secure with the wing nut. Install the hook and loop assemblies as shown in the image below. Trim any excess hook and loop Velcro tail.



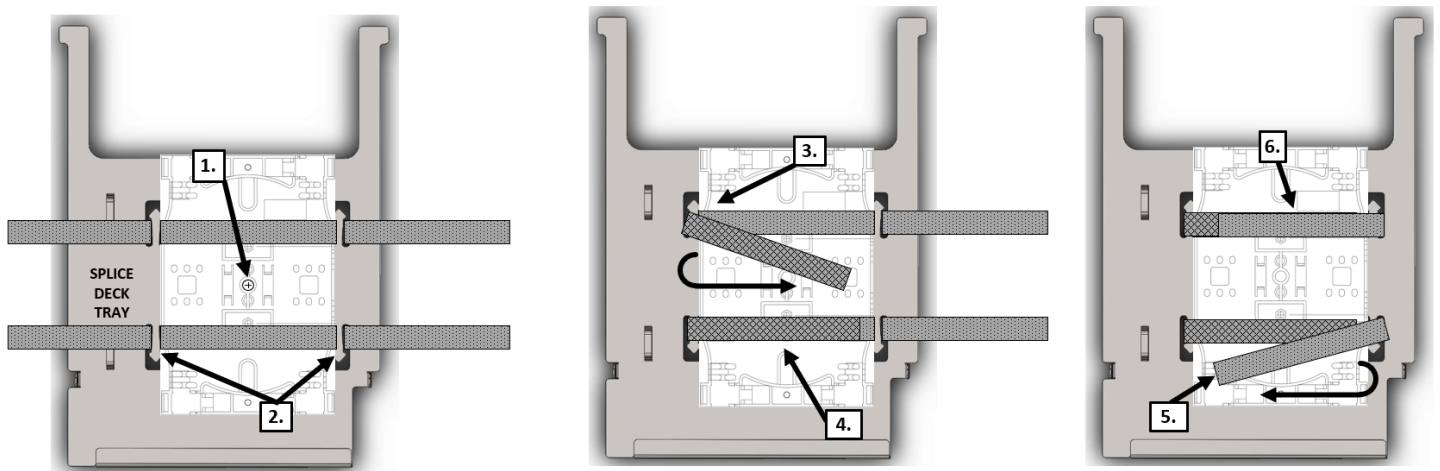
HDX FIBER DISTRIBUTION FRAME

The HDX Splice Deck is provided with a mounting screw for each sliding Splice Tray. The Velcro from this Splice Tray Mounting Hardware Kit can be used but the entire kit is not necessary. If using bulk Velcro, a thinner profile, "Soft Cinch Lite" version is recommended. A 6-32 threaded post and (4) arrow lances are provided in each Splice Tray base. Place the splice tray(s) over the threaded post. Install the provided 6-32 threaded screw into the post and secure to hand tightness. Install the hook and loop assemblies as shown in the images below. Trim any excess hook and loop tail.

Using Velcro from Kit



Using bulk Soft Cinch Lite Velcro (recommended Leviton PN 4S115-75E)



Summary

Splice Tray Mounting Hardware Kits make securing all Leviton Splice Trays quick and easy. For more information visit: www.leviton.com

Leviton Manufacturing Co., Inc.
2222 222nd Street SE
Bothell, WA 98021

tech line 800 824-3005
fax 800 832-9538
www.leviton.com