

Product Bulletin

Smooth Slim Downlight
with Selectable Lumen Output & CCT



Smooth Slim Downlight with Selectable Lumen Output & CCT



Designed for a wide range of applications: Residential, Multi-Family, Hospitality, and Light Commercial spaces

The DFR Series is a direct mount downlighting solution that is ultra slim, making it the ideal choice for both new construction and remodeling installations in low ceilings. Available in 4- and 6- inch round apertures that are IC rated and suitable for both indoor and outdoor covered ceiling applications. Smooth beam distribution and superior color quality for even illumination. Field selectable lumen output and color temperature (CCT) gives you more options with the flick of a switch. Pair the DFR series with Leviton compatible dimmers for the desired light level needed for any space.

- cETLus listed in accordance with UL 1598 and CSA C22.2 No. 250.0
- Suitable for Wet Locations, Covered Ceilings
- ENERGY STAR® Certified
- Complies with Title 24 Part 6 JAB8 High Efficacy LED Light Source Requirements
- Compliant with ASTM E283 (Air Leakage Rate 2.0 CFM or less)
- Suitable for use in clothes closets when installed in accordance with NFPA® 70, NEC® Section 410.16 (A)(1) (C)(3)



cETLus
Listed



Wet
Location



ENERGY
STAR®



Title 24 JAB8
Compliant



Air-tight



IC Rated

120V Phase Dimming
Down to 10%



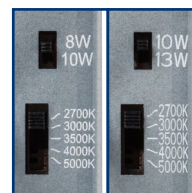
LED
DIMMABLE



Black Trim Ring available



DFR40 DFR60



Selectable Lumen Output

4-Inch: 650/820 Lumens
6-inch: 850/1100 Lumens

5 Selectable CCTs

2700K/3000K/3500K/4000K/5000K

Features and Benefits

- Direct mount downlighting solution; no existing housing or junction box required
- Available in 4- and 6-inch diameter models
- 1/2-inch profile for low fixture depth
- Field selectable lumen output
- Field selectable color temperature (CCT)
 - Select from 2700K, 3000K, 3500K, 4000K, and 5000K
- Smooth beam distribution for even illumination
- IC-Rated die-cast aluminum housing
- Polycarbonate lens
- Closed cell gasket included for use in wet location environments
- 120V Forward or Reverse Phase Dimming down to 10%
 - Compatible with Leviton dimmers listed below

Rating

- 120VAC, 60Hz

Performance

- 4-Inch round delivers 650 lumens at 8 watts and 820 lumens at 10 watts
- 6-Inch round delivers 850 lumens at 10 watts and 1100 lumens at 13 watts
- Light engine consists of 90+ CRI LEDs with R9>50
- 50,000 Hours @ 70% Lumen Maintenance
- Five (5) year replacement after date of purchase

Certifications

- cETLus listed in accordance with UL 1598 and CSA C22.2 No. 250.0
- Suitable for Wet Locations, covered ceilings
- ENERGY STAR® Certified
- Complies with Title 24 Part 6 JA8 High Efficacy LED Light Source Requirements
- Suitable for use in clothes closets when installed in accordance with NFPA® 70 Section NEC® 410.16 (A)(1) (C)(3) spacing requirements
- Type IC (Insulated Ceiling) Rated
- Compliant with ASTM E283 (Air Leakage Rate 2.0 CFM or less)

Specifications

| | DFR40-S1W | DFR60-S1W |
|---------------------------------|--------------|--------------|
| Size | 4-Inch Round | 6-Inch Round |
| Lumen Output¹ | 650/820Lm | 850/1100Lm |
| Input Power | 8/10W | 10/13W |

1. Values are nominal and vary based on CCT

Leviton Compatible Dimmers

| | Dimmer Model |
|-------------------------------------|--------------------------------|
| SureSlide | 6672, 6674N, 66741, 66DF |
| IllumaTech | IPL06, IPE04 |
| Decora Slide with Lever Edge | ESL01 |
| Decora Slide | DSL01, DSE06, DSM10 |
| Decora Digital | DDM06, DDE06, DDL06-1, DDL06-B |
| Decora Smart Wi-Fi | D36HD, D26HD, D2ELV, D2MSD |
| Decora Smart Z-Wave | ZW6HD |
| Decora Evolve | VM2D3, VMDD3 |
| Toggle Slide | TSL01, TSM10 |
| Trimatron Rotary | RDL06, RNL06 |

DIMMING TYPE: Forward/Reverse Phase
TYPICAL DIMMING RANGE: Down to 10%

DFR40 - Photometrics

| CCT | CRI | Lumens ² (Lm) | Power (W) | Lm/W |
|-------|-----|--------------------------|-----------|------|
| 2700K | 93 | 833 | 10.0 | 83.3 |
| 3000K | 95 | 867 | 9.9 | 87.6 |
| 3500K | 96 | 894 | 9.7 | 92.2 |
| 4000K | 96 | 901 | 9.7 | 92.9 |
| 5000K | 93 | 877 | 9.9 | 88.5 |

Results based on 10W settings

Cone of Light

| Distance (Ft.) | Footcandles (FC) | Beam Dia. (Ft.) |
|----------------|------------------|-----------------|
| 6 | 8.5 | 17.6 |
| 8 | 4.8 | 23.5 |
| 10 | 3.1 | 29.4 |
| 12 | 2.1 | 35.3 |
| 14 | 1.6 | 41.1 |
| 16 | 1.2 | 47.0 |

Beam Distribution: 112°

Spacing Criterion: 1.36

Photometric results above based on 3000K

DFR60 - Photometrics

| CCT | CRI | Lumens (Lm) | Power (W) | Lm/W |
|-------|-----|-------------|-----------|-------|
| 2700K | 94 | 1177 | 12.9 | 91.2 |
| 3000K | 95 | 1216 | 12.8 | 95.0 |
| 3500K | 96 | 1255 | 12.6 | 99.6 |
| 4000K | 96 | 1272 | 12.6 | 101.0 |
| 5000K | 93 | 1259 | 12.9 | 97.6 |

Results based on 13W settings

Cone of Light

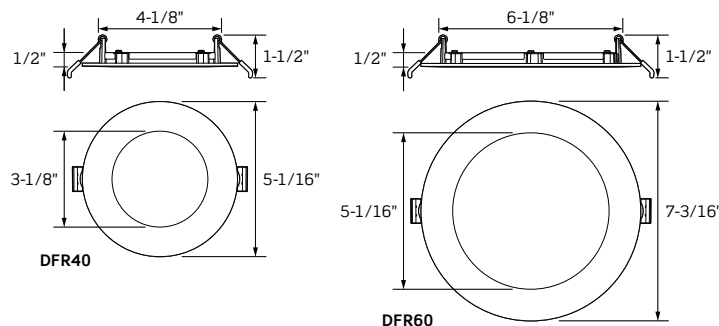
| Distance (Ft.) | Footcandles (FC) | Beam Dia. (Ft.) |
|----------------|------------------|-----------------|
| 6 | 12.2 | 16.8 |
| 8 | 6.8 | 22.4 |
| 10 | 4.4 | 28.1 |
| 12 | 3.0 | 33.7 |
| 14 | 2.2 | 39.3 |
| 16 | 1.7 | 44.9 |

Beam Distribution: 109°

Spacing Criterion: 1.35

Photometric results above based on 3000K

Dimensional Drawings



Ordering Information

| Cat. No. | Description | UPC Number | Std. Pack |
|-----------|--|---------------|-----------|
| DFR40-S1W | 4-Inch Round Smooth Slim Downlight | 07847703733 1 | 12 |
| DFR60-S1W | 6-Inch Round Smooth Slim Downlight | 07847703734 8 | 12 |
| DFR4X-TOE | Trim Ring, 4-In Round Smooth DL, Black | 07847703735 5 | 25 |
| DFR6X-TOE | Trim Ring, 6-In Round Smooth DL, Black | 07847703736 2 | 25 |



Leviton Manufacturing Co., Inc.

Tech Line: 1-800-824-3005

Mon-Fri 8am-10pm EST, Saturday 9am-7pm EST, Sunday 9am-5pm EST

For 24/7 product support visit www.leviton.com/support

© 2026 Leviton Manufacturing Co., Inc. All rights reserved.
 All trademarks are the property of their respective owners.

