

DBR Series Round Baffle Slim Downlight

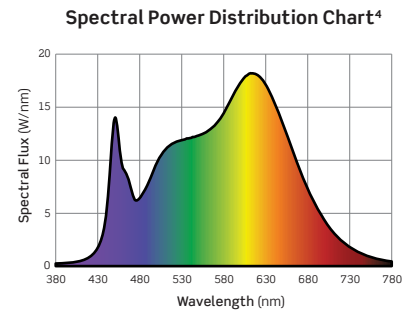
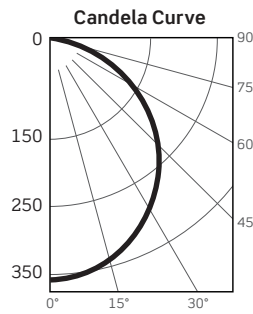
| | |
|------|-------------|
| DATE | PROJECT |
| TYPE | CATALOG NO. |

PHOTOMETRICS

DBR40-011-S1W: 4-Inch Round Baffle Slim Downlight

Fixture Delivered Lumens: 946
 Total Watts@120V: 9.8
 Lumens Per Watt: 96.6
 Center Beam Candle Power: 359
 Beam Distribution: 110°
 Spacing Criterion: 1.34
 Color Rendering Index (CRI)¹: 95.6
 Color Temperature (CCT)²: 3493K
 Designed for 50,000 Hour Lamp Life³
 LM-63 Test No. G24090501
 LM-79 Test No. S24091703

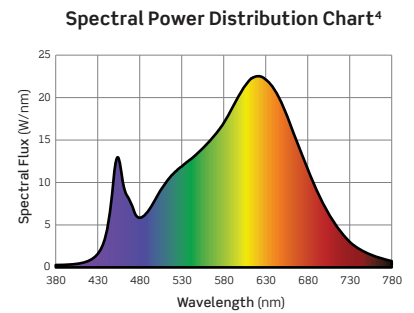
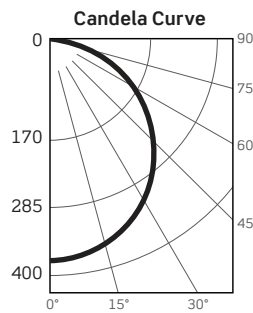
| Intensity Distribution | | |
|------------------------|------------------|---------------------|
| DISTANCE (FT.) | FOOTCANDLES (FC) | BEAM DIAMETER (FT.) |
| 6 FT | 10.0 | 17.1 |
| 8 FT | 5.6 | 22.8 |
| 10 FT | 3.6 | 28.6 |
| 12 FT | 2.5 | 34.3 |
| 14 FT | 1.8 | 40.0 |
| 16 FT | 1.4 | 45.7 |



DBR60-001-S1W: 6-Inch Round Baffle Slim Downlight

Fixture Delivered Lumens: 1044
 Total Watts@120V: 14.7
 Lumens Per Watt: 71.0
 Center Beam Candle Power: 374
 Beam Distribution: 110.4°
 Spacing Criterion: 1.37
 Color Rendering Index (CRI)¹: 94.6
 Color Temperature (CCT)²: 2965K
 Designed for 50,000 Hour Lamp Life³
 LM-63 Test No. G26031101
 LM-79 Test No. S26031703

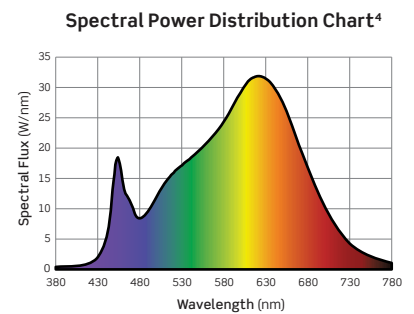
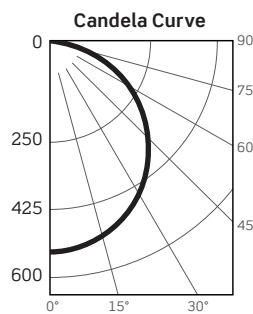
| Intensity Distribution | | |
|------------------------|------------------|---------------------|
| DISTANCE (FT.) | FOOTCANDLES (FC) | BEAM DIAMETER (FT.) |
| 6 FT | 10.4 | 17.3 |
| 8 FT | 5.8 | 23.0 |
| 10 FT | 3.7 | 28.8 |
| 12 FT | 2.6 | 34.6 |
| 14 FT | 1.9 | 40.3 |
| 16 FT | 1.5 | 46.1 |



DBR80-001-S1W: 8-Inch Round Baffle Slim Downlight

Fixture Delivered Lumens: 1491
 Total Watts@120V: 17.4
 Lumens Per Watt: 85.7
 Center Beam Candle Power: 534
 Beam Distribution: 110.5°
 Spacing Criterion: 1.37
 Color Rendering Index (CRI)¹: 94.9
 Color Temperature (CCT)²: 2983K
 Designed for 50,000 Hour Lamp Life³
 LM-63 Test No. G26031102
 LM-79 Test No. S26031202

| Intensity Distribution | | |
|------------------------|------------------|---------------------|
| DISTANCE (FT.) | FOOTCANDLES (FC) | BEAM DIAMETER (FT.) |
| 6 FT | 14.8 | 17.3 |
| 8 FT | 8.3 | 23.0 |
| 10 FT | 5.3 | 28.8 |
| 12 FT | 3.7 | 34.6 |
| 14 FT | 2.7 | 40.3 |
| 16 FT | 2.1 | 46.1 |



1. Accuracy of Rendering Colors 2. Color Appearance of Light Source 3. Dependent on Surrounding Temperatures 4. Colors Present within the Light Source

PHOTOMETRIC MULTIPLICATION FACTORS

Lumen output values fluctuate based on Color Temperature (CCT), Color Rendering Index (CRI), Trim Finish, and Wattage.

To estimate lumen output of other combinations, multiply the published results by the following factors:

| DBR40 | |
|-------|---------|
| CCT | 90+ CRI |
| 2700K | 0.93 |
| 3000K | 0.96 |
| 3500K | 1.00 |
| 4000K | 1.01 |
| 5000K | 0.99 |

| DBR60 | |
|-------|---------|
| CCT | 90+ CRI |
| 2700K | 0.98 |
| 3000K | 1.00 |
| 3500K | 1.11 |
| 4000K | 1.13 |
| 5000K | 1.10 |

| DBR80 | |
|-------|---------|
| CCT | 90+ CRI |
| 2700K | 1.02 |
| 3000K | 1.00 |
| 3500K | 1.09 |
| 4000K | 1.10 |
| 5000K | 1.10 |

DBR Series Round Baffle Slim Downlight

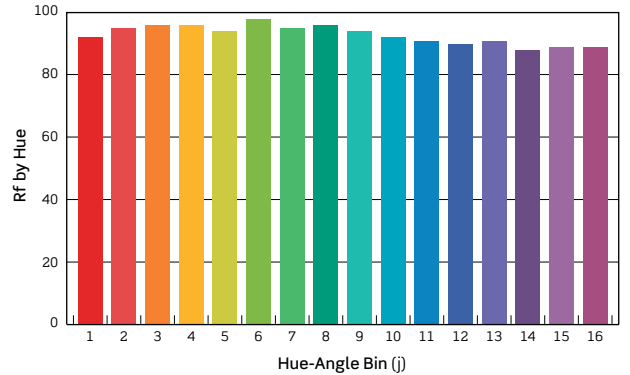
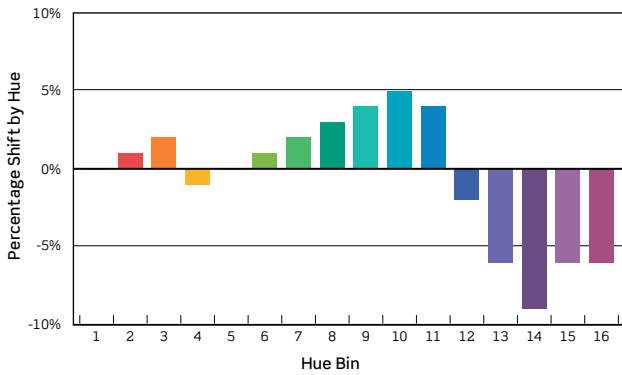
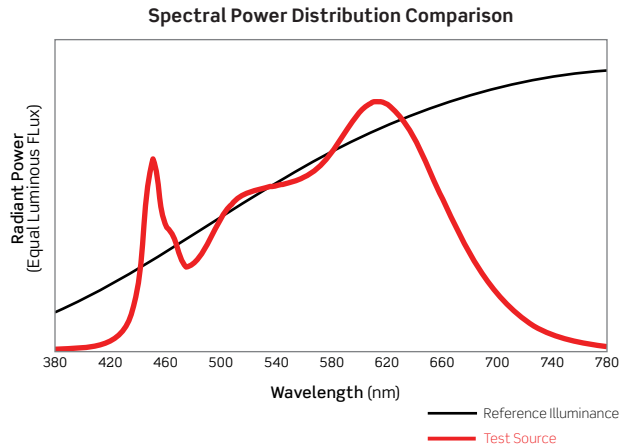
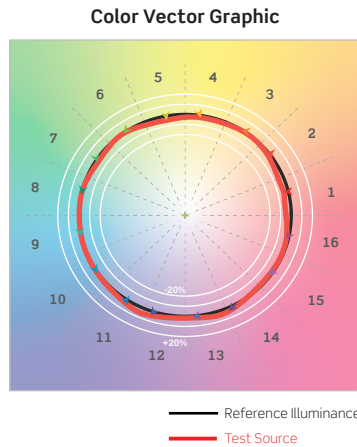
| | |
|------|-------------|
| DATE | PROJECT |
| TYPE | CATALOG NO. |

PHOTOMETRICS

TM-30 DATA: DBR40-011-S1W 4-Inch Round Baffle Slim Downlight

ANSI/IES TM-30-18 Color Rendition Report Test No. S24091703

| | |
|----------|---------|
| R_f | 93 |
| R_g | 99 |
| CCT(K) | 3493K |
| D_{uv} | -0.0008 |
| u^l | 0.2362 |
| v^l | 0.5104 |



| HUE BIN | 1 | 2 | 3 | 4 | 5 | 6 | 7 | 8 | 9 | 10 | 11 | 12 | 13 | 14 | 15 | 16 |
|----------------------|----|----|----|-----|----|----|----|----|----|----|----|-----|-----|-----|-----|-----|
| HUE SHIFT | 0% | 1% | 2% | -1% | 0% | 1% | 2% | 3% | 4% | 5% | 4% | -2% | -6% | -9% | -6% | -6% |
| R _f VALUE | 92 | 95 | 96 | 96 | 94 | 98 | 95 | 96 | 94 | 92 | 91 | 90 | 91 | 88 | 89 | 89 |

Colors are for visual orientation purposes only

DBR Series Round Baffle Slim Downlight

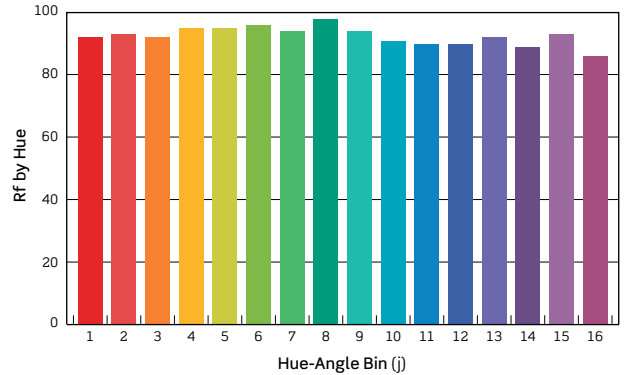
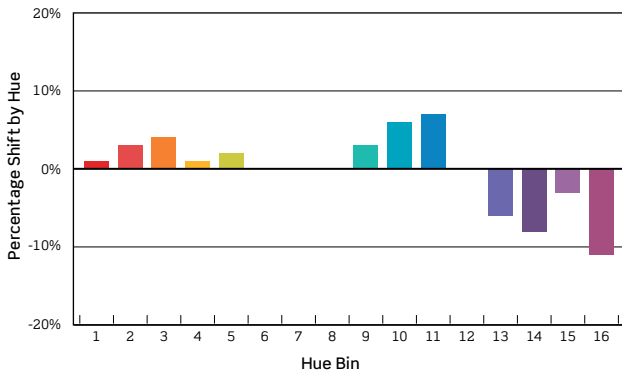
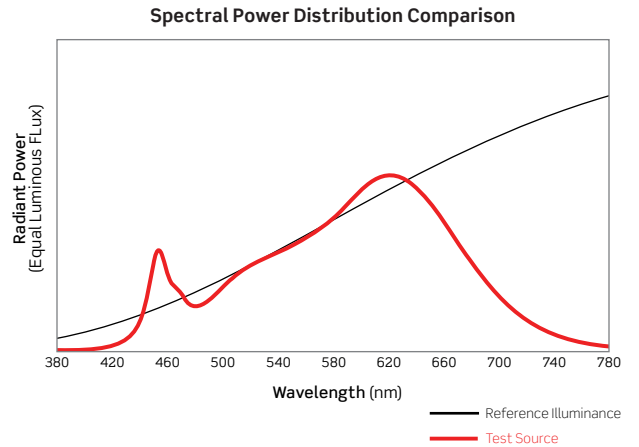
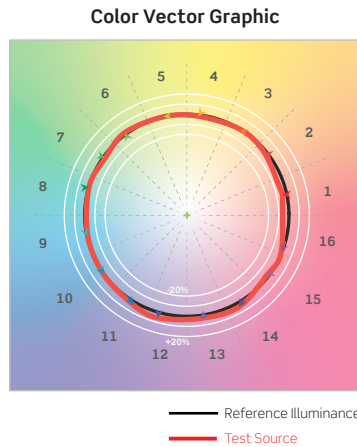
| | |
|------|-------------|
| DATE | PROJECT |
| TYPE | CATALOG NO. |

PHOTOMETRICS

TM-30 DATA: DBR60-001-S1W 6-Inch Round Baffle Slim Downlight

ANSI/IES TM-30-18 Color Rendition Report Test No. S26031703

| | |
|----------|---------|
| R_f | 92 |
| R_g | 100 |
| CCT(K) | 2965K |
| D_{uv} | -0.0036 |
| u^l | 0.2531 |
| v^l | 0.5170 |



| HUE BIN | 1 | 2 | 3 | 4 | 5 | 6 | 7 | 8 | 9 | 10 | 11 | 12 | 13 | 14 | 15 | 16 |
|----------------------|----|----|----|----|----|----|----|----|----|----|----|----|-----|-----|-----|------|
| HUE SHIFT | 1% | 3% | 4% | 1% | 2% | 0% | 0% | 0% | 3% | 6% | 7% | 0% | -6% | -8% | -3% | -11% |
| R _f VALUE | 92 | 93 | 92 | 95 | 95 | 96 | 94 | 98 | 94 | 91 | 90 | 90 | 92 | 89 | 93 | 86 |

Colors are for visual orientation purposes only

DBR Series Round Baffle Slim Downlight

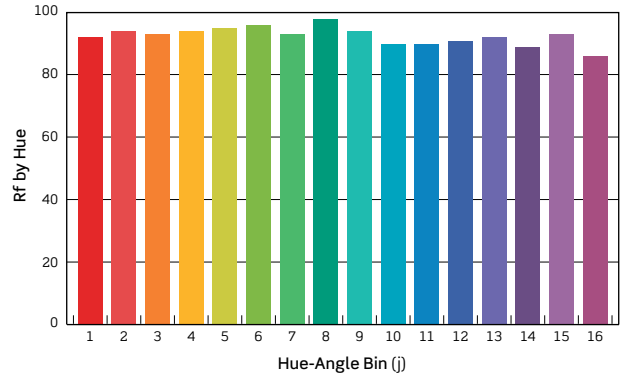
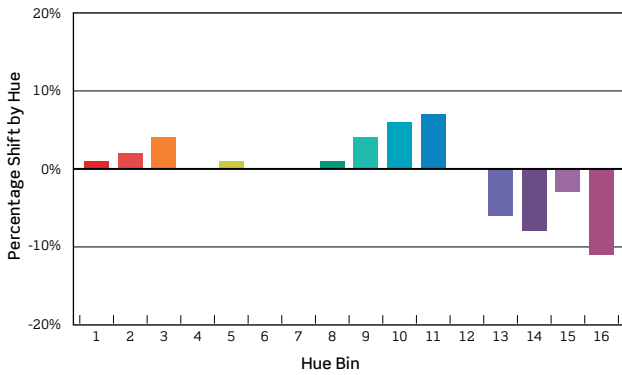
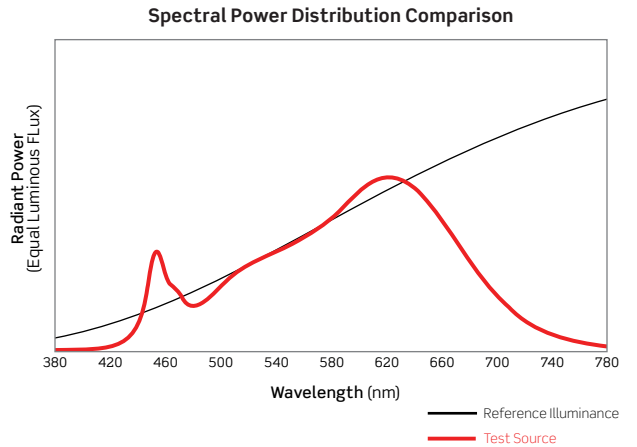
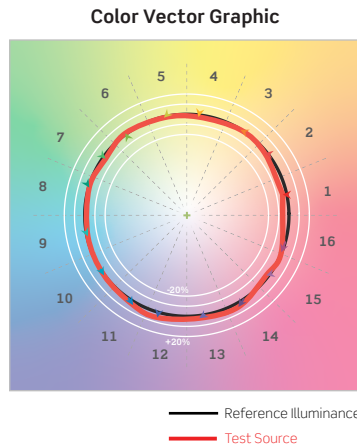
| | |
|------|-------------|
| DATE | PROJECT |
| TYPE | CATALOG NO. |

PHOTOMETRICS

TM-30 DATA: DBR80-001-S1W 8-Inch Round Baffle Slim Downlight

ANSI/IES TM-30-18 Color Rendition Report Test No. S26031202

| | |
|----------|---------|
| R_f | 92 |
| R_g | 100 |
| CCT(K) | 2983K |
| D_{uv} | -0.0027 |
| u^l | 0.2521 |
| v^l | 0.5179 |



| HUE BIN | 1 | 2 | 3 | 4 | 5 | 6 | 7 | 8 | 9 | 10 | 11 | 12 | 13 | 14 | 15 | 16 |
|----------------------|----|----|----|----|----|----|----|----|----|----|----|----|-----|-----|-----|------|
| HUE SHIFT | 1% | 2% | 4% | 0% | 1% | 0% | 0% | 1% | 4% | 6% | 7% | 0% | -6% | -8% | -3% | -11% |
| R _f VALUE | 92 | 94 | 93 | 94 | 95 | 96 | 93 | 98 | 94 | 90 | 90 | 91 | 92 | 89 | 93 | 86 |

Colors are for visual orientation purposes only