

9866-B0W

Motion Sensor Downlight

DATE	PROJECT
TYPE	CATALOG NO.



ENERGY STAR®

cETLus Listed

Damp Location

Noma Oficial Mexicana

PRODUCT OVERVIEW

FEATURES

- Low profile design for easy installation
- Automatic On/Off PIR Sensor - no switch needed
- Field selectable color temperature (CCT)
- Mounting bracket included to fit 3-1/2 or 4-1/2 standard junction boxes

3 Selectable CCTs
3000K/4000K/5000K



30/180 Seconds
Auto Time-off Options



PERFORMANCE

Catalog No.	Size	Lumen Output ¹	Input Power	CRI	Color Temperature
9866-B0W	8-Inch Round	1440Lm	18W	80	3000K / 4000K / 5000K

1. Values are nominal and vary based on CCT

9866-B0W

Motion Sensor Downlight

DATE	PROJECT
TYPE	CATALOG NO.

TECHNICAL INFORMATION

MATERIAL SPECIFICATIONS

- Fixture**
Polycarbonate and Aluminum
- Bracket**
Metal
- Sizes**
Available in 8-inch diameter model
- Finish**
White
- Lens**
Polycarbonate light diffuser for uniform even light distribution
- Trim Style**
Smooth

LED CHARACTERISTICS

- Color Temperature**
Selectable CCT: 3000K / 4000K / 5000K
Factory default set to 4000K
- Color Rendering Index (CRI)**
80
- Color Consistency**
<6-Step MacAdam Ellipse binning to achieve Fixture to Fixture Color Consistency
- Beam Angle**
113°
- LED Life**
30,000 Hours @ 70% Lumen Maintenance

ELECTRICAL

- Driver**
Constant Current, 120V: 0.15A
- Power Factor**
≥0.9
- Input Voltage**
120V
- Operating Frequency**
60Hz
- Operating Temperature**
-13°F to 104°F (-25°C to 40°C)
- Dimmable**
No

INSTALLATION

No housing required. Secure luminaire to ceiling with included metal bracket and screws. Suitable for installation in most 3-1/2 and 4-1/2 standard round junction boxes. Wall mount compatible.

SENSOR SETTINGS

- Sensor Technology**
Passive Infrared (PIR)
- Detection Angle**
90°
- Max Mounting Height**
10 Feet
- Motion Modes**
Switch 1: 30/180 seconds auto time-off options
Switch 2: Sensor Modes
Daytime - Turns off lamp regardless of ambient light
Nighttime - Only turns lamp on when sensor detects motion and there is no ambient light
Switch 3: Sensor ON/OFF
Turns off sensor so lamp can be used with a single pole switch
- Adjustable Sensor Settings**
Integrated switches to adjust sensor modes and hold times
- Hold Times**
30 Seconds, 180 Seconds

COMPLIANCE

- cETLus**
cETLus listed in accordance with UL 1598 and CSA C22.2 No. 250.0
- Environment**
Suitable for Damp Locations, covered ceilings
- Energy Rating**
ENERGY STAR® Certified
- National Electric Code (NEC)**
Suitable for use in clothes closets when installed in accordance with NFPA® 70 Section NEC® 410.16 (A)(1) (C)(1) spacing requirements
- Noma Oficial Mexicana (NOM)**
Lawful for sale in Mexico
- RoHS**
Mercury and UV free, RoHS-compliant components
- FCC**
Complies with Part 15 of the FCC Rules

5 YEAR LIMITED WARRANTY

Leviton warrants to its customer and the original end user the LED electronics and components of its properly installed LED products, to be free of defects in material and workmanship, in normal use, for a period of five (5) years from the date of shipment by Leviton and warrants the painted finish for a period of one (1) year from the date of shipment by Leviton.

See the rest of our warranty [here](#).

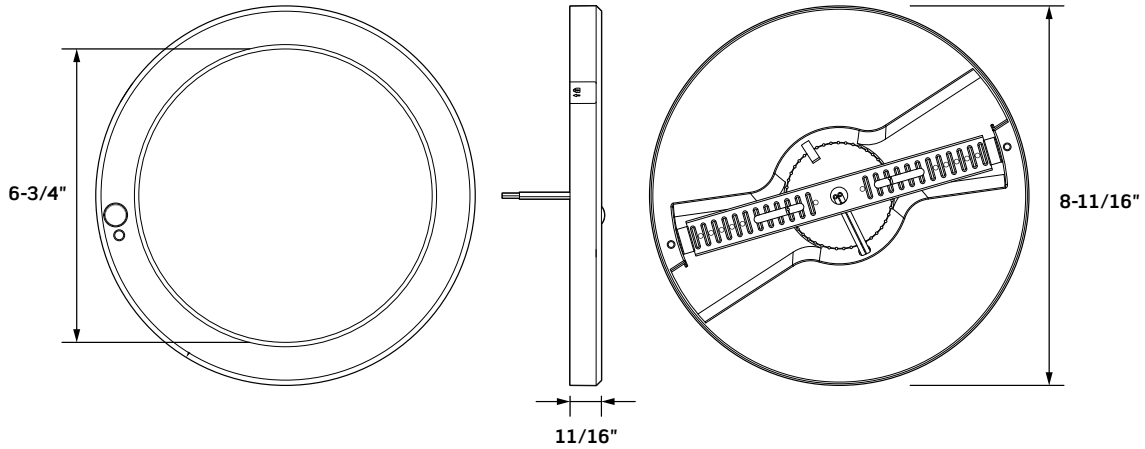
9866-B0W

Motion Sensor Downlight

DATE	PROJECT
TYPE	CATALOG NO.

DIMENSIONS

9866-B0W



ORDERING INFORMATION

MOTION SENSOR DOWNLIGHT



CAT. NO.	Description	UPC Number	Std. Pack
9866-B0W	8" Round Motion Sensor Downlight	07847787745 6	20

9866-B0W

Motion Sensor Downlight

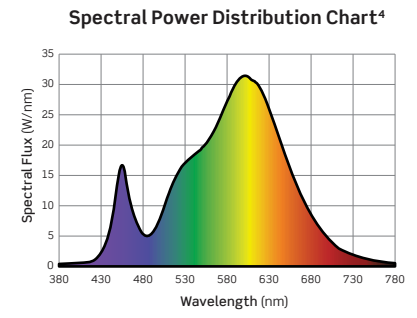
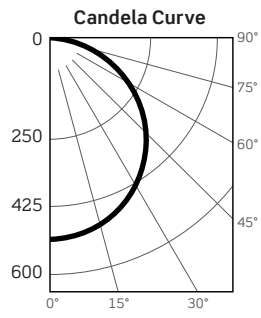
DATE	PROJECT
TYPE	CATALOG NO.

PHOTOMETRICS

9866-001-B0W: 8-Inch Round Motion Sensor Downlight

Fixture Delivered Lumens: 1474
 Total Watts@120V: 17.7
 Lumens Per Watt: 83.3
 Center Beam Candle Power: 510
 Beam Distribution: 113°
 Spacing Criterion: 1.38
 Color Rendering Index (CRI)¹: 81.8
 Color Temperature (CCT)²: 2999K
 Designed for 50,000 Hour Lamp Life³
 LM-63 Test No. G26030501
 LM-79 Test No. S26031001

Cone of Light		
DISTANCE (FT.)	FOOTCANDLES (FC)	BEAM DIAMETER (FT.)
6 FT	14.2	18.0
8 FT	8.0	24.0
10 FT	5.1	30.0
12 FT	3.5	36.0
14 FT	2.6	42.0
16 FT	2.0	48.0



PHOTOMETRIC MULTIPLICATION FACTORS

Lumen output values fluctuate based on Color Temperature (CCT), Color Rendering Index (CRI), Trim Finish, and Wattage.

To estimate lumen output of other combinations, multiply the published results by the following factors:

9866	
CCT	80 CRI
3000K	1.00
4000K	1.22
5000K	1.13

9866-B0W

Motion Sensor Downlight

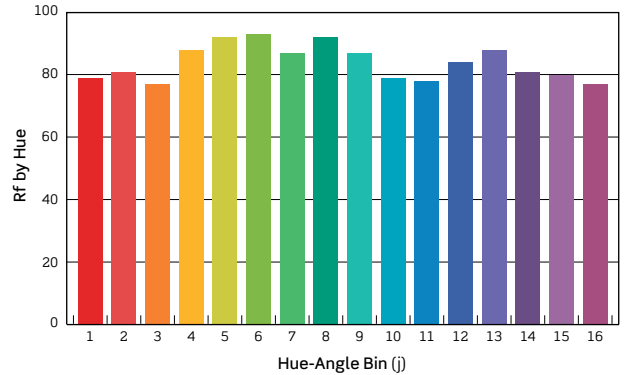
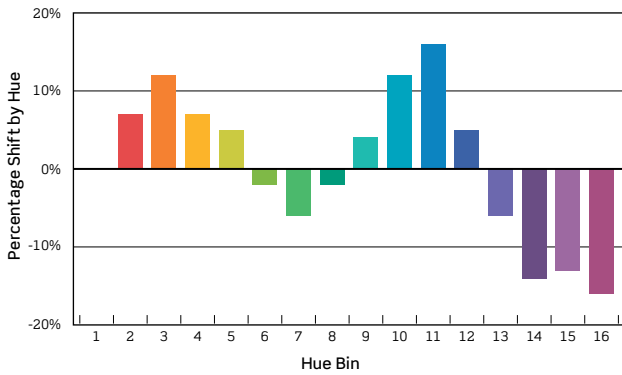
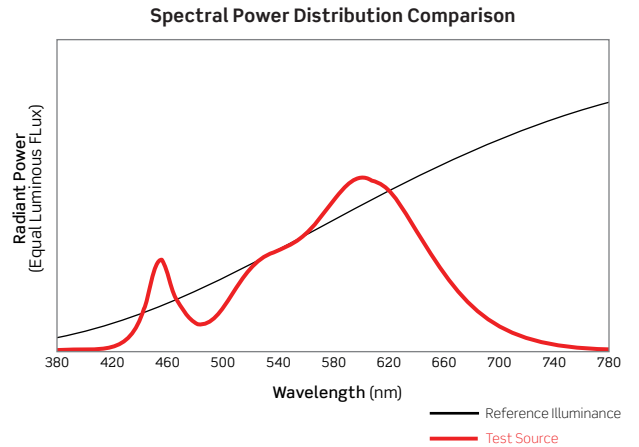
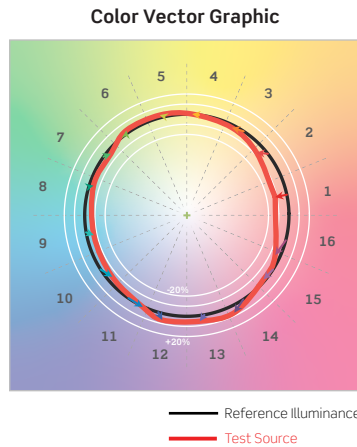
DATE	PROJECT
TYPE	CATALOG NO.

PHOTOMETRICS

TM-30 DATA: 9866-001-B0W 8-Inch Motion Sensor Downlight

ANSI/IES TM-30-18 Color Rendition Report Test No. S26031001

R_f	84
R_g	96
CCT(K)	2999K
D_{uv}	0.0008
u^l	0.2503
v^l	0.5225



HUE BIN	1	2	3	4	5	6	7	8	9	10	11	12	13	14	15	16
HUE SHIFT	0%	7%	12%	7%	5%	-2%	-6%	-2%	4%	12%	16%	5%	-6%	-14%	-13%	-16%
Rf VALUE	79	81	77	88	92	93	87	92	87	79	78	84	88	81	80	77

Colors are for visual orientation purposes only