

VerifEye™ Mini Meter™ Multiple Meter Units (MMU)



Medium Enclosure



Large Enclosure



Extra-Large Enclosure

Description

VerifEye™ Mini Meter™ Configured Multiple Meter Units (MMUs) are designed for multi-tenant submetering applications in which multiple single phase loads are fed from the same power distribution panel to be metered.

MMUs have important advantages over multiple individually housed meters including:

- Smaller mounting footprint
- Reduced hardware requirements (conduit, wire, short circuit protection devices, etc.)
- Reduced installation time
- Individual meters in one enclosure enhances product reliability

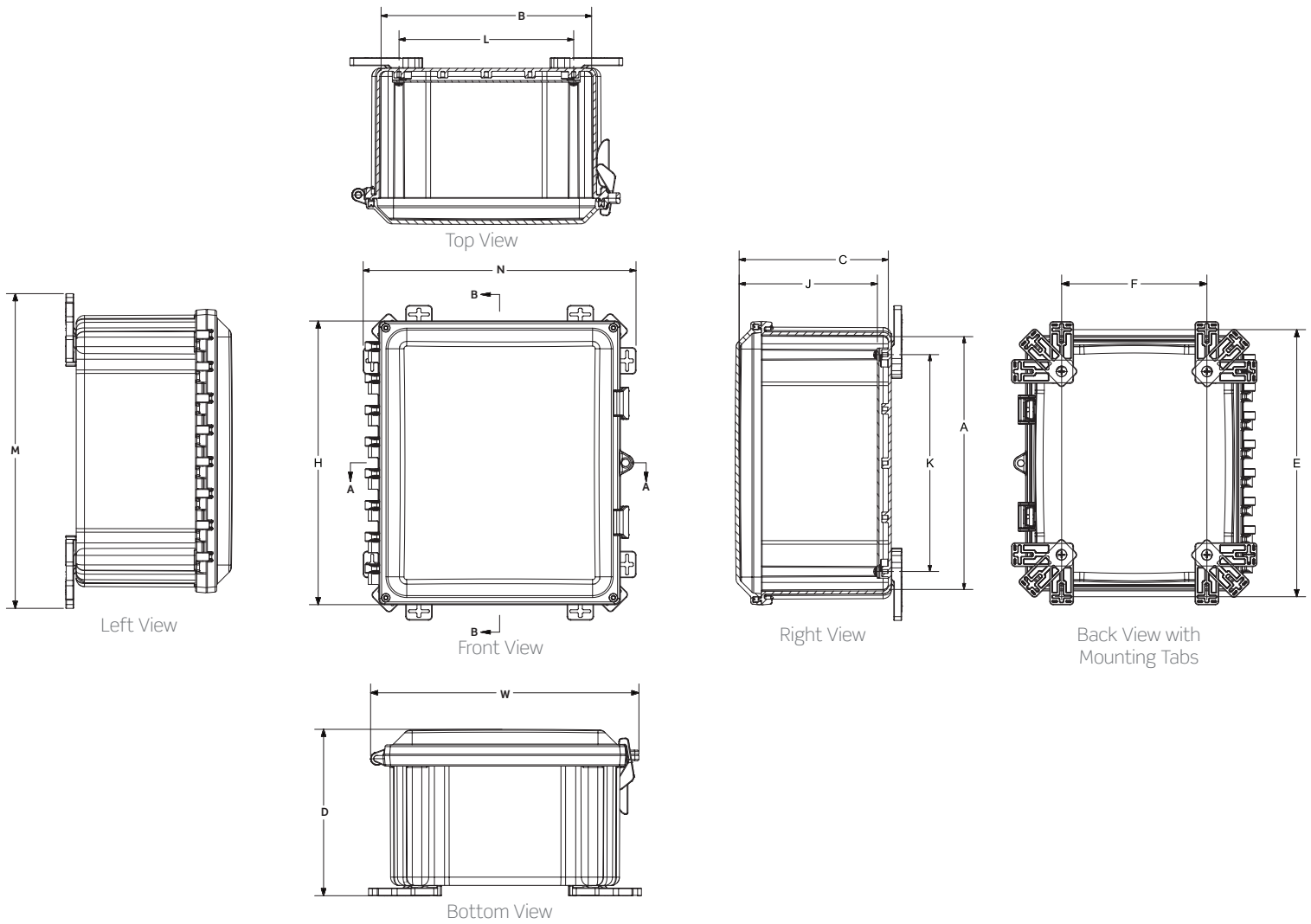
Each VerifEye Mini Meter installed in an MMU is a revenue-grade*, ANSI C12.20-compliant energy meter that is backed by Leviton with a best-in-industry 5-year warranty. Mini Meter MMUs are NEMA 4X rated and UL Listed, suitable for either indoor or outdoor installations. Each Mini Meter has built-in pulse outputs for connection to a High Density Pulse Module, Wireless AMR Transceiver, or a Data Acquisition Server with pulse inputs.

*Leviton Solid Core Current Transformers are recommended for revenue-grade metering

Features

- Suitable for both new construction and retrofit applications, Mini Meter (kWh) MMUs are available in 3 sizes:
 - Medium: Houses 2 to 4 Mini Meters
 - Large: Houses 5 to 8 Mini Meters
 - Extra-Large: Houses 9 to 20 Mini Meters
- Clear door allowing visibility to meter LCD
- All wiring is done behind the front panel
- No custom configuration form required
- Basic panels are pre-configured with the following options:
 - Terminals only for meter pulse outputs
 - Integrated A8911 High Density Pulse Module (HDPM)
 - Integrated R9120 Modhopper Wireless Transceiver (MH)
 - Integrated A8810/A7810 Data Acquisition Server (DAS)
- All Mini Meter MMUs use 200A CTs
 - CDA02-xxx Solid Core 100mA
 - CTA02-KT0 Split Core 100mA

Dimensional Diagrams



Meter Size	Overall H X W X D	Inside A X B X C	Mounting Horizontal E X F	Mounting Vertical E X F	Mounting 45 E X F	J	K	L	M	N
Medium	15.40 x 14.68 x 7.86 (391 x 373 x 200)	13.95 x 11.95 x 7.07 (354 x 304 x 180)	11.64 x 14.04 (296 x 357)	16.04 x 9.64 (407 x 245)	14.76 x 12.75 (375 x 324)	6.56 (167)	12.25 (311)	10.25 (260)	16.89 (429)	14.89 (378)
Large	21.41 x 18.68 x 9.97 (544 x 474 x 253)	19.86 x 15.86 x 9.15 (504 x 403 x 232)	18.75 x 19.17 (476 x 487)	23.15 x 14.75 (588 x 375)	21.91 x 17.87 (557 x 454)	8.65 (220)	18.25 (464)	14.25 (362)	24.00 (610)	20.02 (509)
Extra Large	25.41 x 26.68 x 11.41 (645 x 678 x 290)	23.91 x 23.91 x 11.88 (607 x 607 x 302)	N/A	25.69 x 18.00 (653 x 457)	N/A	10.56 (268)	22.25 (565)	22.25 (565)	26.69 (678)	21.86 (555)

All measurements are in inches, items in parentheses are in millimeters.

Product Data

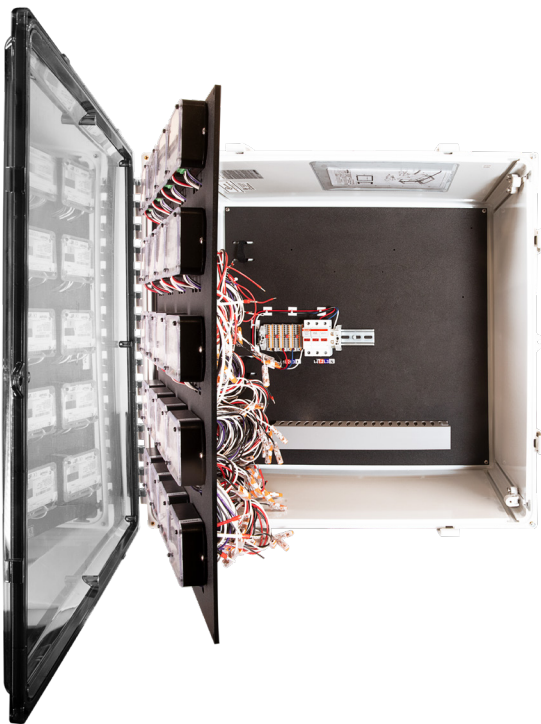
MMTxx-xxx/MLTxx-xxx/MXTxx-xxx



Ordering Information

Mini Meter MMU Basic Meters—With Terminals Only

Cat. No.	Description
MMT02-2T0	Mini Meter MMU - Medium Enclosure, 2 Meters with Terminals Only
MMT03-2T0	Mini Meter MMU - Medium Enclosure, 3 Meters with Terminals Only
MMT04-2T0	Mini Meter MMU - Medium Enclosure, 4 Meters with Terminals Only
MLT05-2T0	Mini Meter MMU - Large Enclosure, 5 Meters with Terminals Only
MLT06-2T0	Mini Meter MMU - Large Enclosure, 6 Meters with Terminals Only
MLT07-2T0	Mini Meter MMU - Large Enclosure, 7 Meters with Terminals Only
MLT08-2T0	Mini Meter MMU - Large Enclosure, 8 Meters with Terminals Only
MXT09-2T0	Mini Meter MMU - XL Enclosure, 9 Meters with Terminals Only
MXT10-2T0	Mini Meter MMU - XL Enclosure, 10 Meters with Terminals Only
MXT11-2T0	Mini Meter MMU - XL Enclosure, 11 Meters with Terminals Only
MXT12-2T0	Mini Meter MMU - XL Enclosure, 12 Meters with Terminals Only
MXT13-2T0	Mini Meter MMU - XL Enclosure, 13 Meters with Terminals Only
MXT14-2T0	Mini Meter MMU - XL Enclosure, 14 Meters with Terminals Only
MXT15-2T0	Mini Meter MMU - XL Enclosure, 15 Meters with Terminals Only
MXT16-2T0	Mini Meter MMU - XL Enclosure, 16 Meters with Terminals Only
MXT17-2T0	Mini Meter MMU - XL Enclosure, 17 Meters with Terminals Only
MXT18-2T0	Mini Meter MMU - XL Enclosure, 18 Meters with Terminals Only
MXT19-2T0	Mini Meter MMU - XL Enclosure, 19 Meters with Terminals Only
MXT20-2T0	Mini Meter MMU - XL Enclosure, 20 Meters with Terminals Only



MXT20-2T0

Leviton Manufacturing Co., Inc. Lighting & Controls

10385 SW Avery Street, Tualatin, OR 97062 tel 800-736-6682 tech line (6:00AM-4:00PM PT Mon-Fri) 800-959-6004

©2024 Leviton Manufacturing Co., Inc. All rights reserved. Subject to change without notice.

Ordering Information

Mini Meter MMU— With Integrated High Density Pulse Module (HDPM)

Cat. No.	Description
MMT02-2H0	Mini Meter MMU - Medium Enclosure, 2 Meters with Integrated HDPM
MMT03-2H0	Mini Meter MMU - Medium Enclosure, 3 Meters with Integrated HDPM
MMT04-2H0	Mini Meter MMU - Medium Enclosure, 4 Meters with Integrated HDPM
MLT05-2H0	Mini Meter MMU - Large Enclosure, 5 Meters with Integrated HDPM
MLT06-2H0	Mini Meter MMU - Large Enclosure, 6 Meters with Integrated HDPM
MLT07-2H0	Mini Meter MMU - Large Enclosure, 7 Meters with Integrated HDPM
MLT08-2H0	Mini Meter MMU - Large Enclosure, 8 Meters with Integrated HDPM
MXT09-2H0	Mini Meter MMU - XL Enclosure, 9 Meters with Integrated HDPM
MXT10-2H0	Mini Meter MMU - XL Enclosure, 10 Meters with Integrated HDPM
MXT11-2H0	Mini Meter MMU - XL Enclosure, 11 Meters with Integrated HDPM
MXT12-2H0	Mini Meter MMU - XL Enclosure, 12 Meters with Integrated HDPM
MXT13-2H0	Mini Meter MMU - XL Enclosure, 13 Meters with Integrated HDPM
MXT14-2H0	Mini Meter MMU - XL Enclosure, 14 Meters with Integrated HDPM
MXT15-2H0	Mini Meter MMU - XL Enclosure, 15 Meters with Integrated HDPM
MXT16-2H0	Mini Meter MMU - XL Enclosure, 16 Meters with Integrated HDPM
MXT17-2H0	Mini Meter MMU - XL Enclosure, 17 Meters with Integrated HDPM
MXT18-2H0	Mini Meter MMU - XL Enclosure, 18 Meters with Integrated HDPM
MXT19-2H0	Mini Meter MMU - XL Enclosure, 19 Meters with Integrated HDPM
MXT20-2H0	Mini Meter MMU - XL Enclosure, 20 Meters with Integrated HDPM

Mini Meter MMU— With Integrated High Density Pulse Module (HDPM) + Modhopper (MH) Wireless Transceiver

Cat. No.	Description
MLT05-2W0	Mini Meter MMU - Large Enclosure, 5 Meters with Integrated HDPM+MH
MLT06-2W0	Mini Meter MMU - Large Enclosure, 6 Meters with Integrated HDPM+MH
MLT07-2W0	Mini Meter MMU - Large Enclosure, 7 Meters with Integrated HDPM+MH
MLT08-2W0	Mini Meter MMU - Large Enclosure, 8 Meters with Integrated HDPM+MH
MXT09-2W0	Mini Meter MMU - XL Enclosure, 9 Meters with Integrated HDPM+MH
MXT10-2W0	Mini Meter MMU - XL Enclosure, 10 Meters with Integrated HDPM+MH
MXT11-2W0	Mini Meter MMU - XL Enclosure, 11 Meters with Integrated HDPM+MH
MXT12-2W0	Mini Meter MMU - XL Enclosure, 12 Meters with Integrated HDPM+MH
MXT13-2W0	Mini Meter MMU - XL Enclosure, 13 Meters with Integrated HDPM+MH
MXT14-2W0	Mini Meter MMU - XL Enclosure, 14 Meters with Integrated HDPM+MH
MXT15-2W0	Mini Meter MMU - XL Enclosure, 15 Meters with Integrated HDPM+MH
MXT16-2W0	Mini Meter MMU - XL Enclosure, 16 Meters with Integrated HDPM+MH
MXT17-2W0	Mini Meter MMU - XL Enclosure, 17 Meters with Integrated HDPM+MH
MXT18-2W0	Mini Meter MMU - XL Enclosure, 18 Meters with Integrated HDPM+MH
MXT19-2W0	Mini Meter MMU - XL Enclosure, 19 Meters with Integrated HDPM+MH
MXT20-2W0	Mini Meter MMU - XL Enclosure, 20 Meters with Integrated HDPM+MH

Product Data

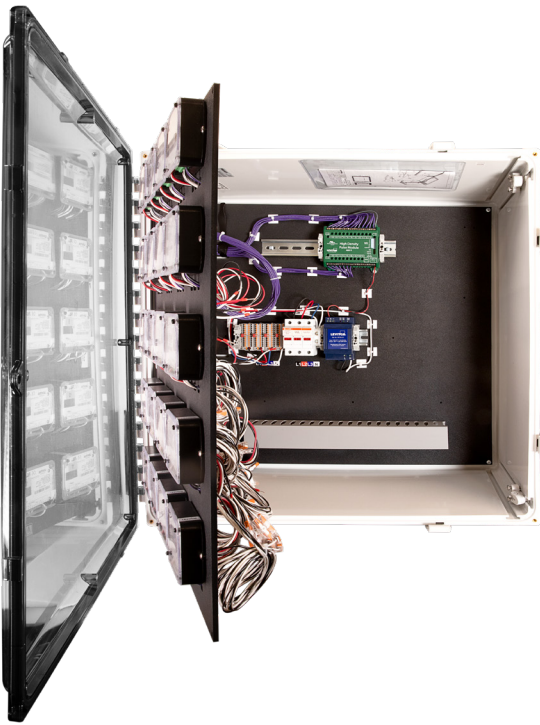
MMTxx-xxx/MLTxx-xxx/MXTxx-xxx



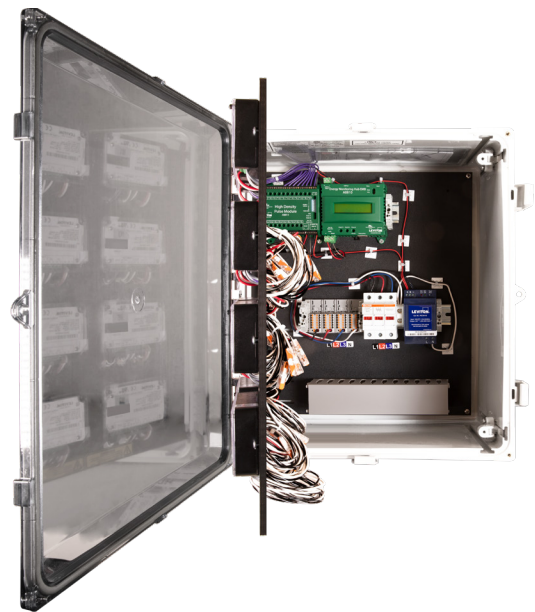
Ordering Information

Mini Meter MMU— With Integrated High Density Pulse Module (HDPM) + Data Acquisition Server (DAS)

Cat. No.	Description
MMT02-20A	Mini Meter MMU - Medium Enclosure, 2 Meters with Integrated A7810 DAS with pulse inputs
MMT03-20A	Mini Meter MMU - Medium Enclosure, 3 Meters with Integrated A7810 DAS with pulse inputs
MMT04-20A	Mini Meter MMU - Medium Enclosure, 4 Meters with Integrated A7810 DAS with pulse inputs
MLT05-2HB	Mini Meter MMU - Large Enclosure, 5 Meters with Integrated HDPM+A8810 DAS
MLT06-2HB	Mini Meter MMU - Large Enclosure, 6 Meters with Integrated HDPM+A8810 DAS
MLT07-2HB	Mini Meter MMU - Large Enclosure, 7 Meters with Integrated HDPM+A8810 DAS
MLT08-2HB	Mini Meter MMU - Large Enclosure, 8 Meters with Integrated HDPM+A8810 DAS
MXT09-2HB	Mini Meter MMU - XL Enclosure, 9 Meters with Integrated HDPM+A8810 DAS
MXT10-2HB	Mini Meter MMU - XL Enclosure, 10 Meters with Integrated HDPM+A8810 DAS
MXT11-2HB	Mini Meter MMU - XL Enclosure, 11 Meters with Integrated HDPM+A8810 DAS
MXT12-2HB	Mini Meter MMU - XL Enclosure, 12 Meters with Integrated HDPM+A8810 DAS
MXT13-2HB	Mini Meter MMU - XL Enclosure, 13 Meters with Integrated HDPM+A8810 DAS
MXT14-2HB	Mini Meter MMU - XL Enclosure, 14 Meters with Integrated HDPM+A8810 DAS
MXT15-2HB	Mini Meter MMU - XL Enclosure, 15 Meters with Integrated HDPM+A8810 DAS
MXT16-2HB	Mini Meter MMU - XL Enclosure, 16 Meters with Integrated HDPM+A8810 DAS
MXT17-2HB	Mini Meter MMU - XL Enclosure, 17 Meters with Integrated HDPM+A8810 DAS
MXT18-2HB	Mini Meter MMU - XL Enclosure, 18 Meters with Integrated HDPM+A8810 DAS
MXT19-2HB	Mini Meter MMU - XL Enclosure, 19 Meters with Integrated HDPM+A8810 DAS
MXT20-2HB	Mini Meter MMU - XL Enclosure, 20 Meters with Integrated HDPM+A8810 DAS



MXT20-2HB



MLT08-2HB

Leviton Manufacturing Co., Inc. Lighting & Controls

10385 SW Avery Street, Tualatin, OR 97062 tel 800-736-6682 tech line (6:00AM-4:00PM PT Mon-Fri) 800-959-6004

©2024 Leviton Manufacturing Co., Inc. All rights reserved. Subject to change without notice.

Product Data

MMTxx-xxx/MLTxx-xxx/MXTxx-xxx



Ordering Information

Mini Meter MMU— With Integrated High Density Pulse Module (HDPM) + Data Acquisition Server (DAS) + Modhopper (MH) Wireless Transceiver

Cat. No.	Description
MLT05-2WB	Mini Meter MMU - Large Enclosure, 5 Meters with Integrated HDPM+A8810 DAS+MH
MLT06-2WB	Mini Meter MMU - Large Enclosure, 6 Meters with Integrated HDPM+A8810 DAS+MH
MLT07-2WB	Mini Meter MMU - Large Enclosure, 7 Meters with Integrated HDPM+A8810 DAS+MH
MLT08-2WB	Mini Meter MMU - Large Enclosure, 8 Meters with Integrated HDPM+A8810 DAS+MH
MXT09-2WB	Mini Meter MMU - XL Enclosure, 9 Meters with Integrated HDPM+A8810 DAS+MH
MXT10-2WB	Mini Meter MMU - XL Enclosure, 10 Meters with Integrated HDPM+A8810 DAS+MH
MXT11-2WB	Mini Meter MMU - XL Enclosure, 11 Meters with Integrated HDPM+A8810 DAS+MH
MXT12-2WB	Mini Meter MMU - XL Enclosure, 12 Meters with Integrated HDPM+A8810 DAS+MH
MXT13-2WB	Mini Meter MMU - XL Enclosure, 13 Meters with Integrated HDPM+A8810 DAS+MH
MXT14-2WB	Mini Meter MMU - XL Enclosure, 14 Meters with Integrated HDPM+A8810 DAS+MH
MXT15-2WB	Mini Meter MMU - XL Enclosure, 15 Meters with Integrated HDPM+A8810 DAS+MH
MXT16-2WB	Mini Meter MMU - XL Enclosure, 16 Meters with Integrated HDPM+A8810 DAS+MH
MXT17-2WB	Mini Meter MMU - XL Enclosure, 17 Meters with Integrated HDPM+A8810 DAS+MH
MXT18-2WB	Mini Meter MMU - XL Enclosure, 18 Meters with Integrated HDPM+A8810 DAS+MH
MXT19-2WB	Mini Meter MMU - XL Enclosure, 19 Meters with Integrated HDPM+A8810 DAS+MH
MXT20-2WB	Mini Meter MMU - XL Enclosure, 20 Meters with Integrated HDPM+A8810 DAS+MH

Current Transformers

Amp	Opening Dimensions	Lead Length	Cat. No.	Description
Solid Core CTs				
200:0.1A	0.72"	48"	CDA02-K12	Solid Core, Black
200:0.1A			CDA02-L12	Solid Core, Blue
200:0.1A			CDA02-R12	Solid Core, Red
Solid Core CT Kits				
200:0.1A	0.72"	48"	CDA02-212	2 Solid Core, 1 each Black, Red
Split Core CTs				
200:0.1A	1" x 1"	144"	CTA02-KD0	Split Core

Leviton Manufacturing Co., Inc. Lighting & Controls

10385 SW Avery Street, Tualatin, OR 97062 **tel** 800-736-6682 **tech line** (6:00AM-4:00PM PT Mon-Fri) 800-959-6004

Leviton Manufacturing Co., Inc. Global Headquarters

201 North Service Road, Melville, NY 11747-3138 **tel** 800-323-8920 **tech line** (8:00AM-10:00PM ET Mon-Fri, 9:00AM-7:00PM ET Sat, 9:00AM-5:00PM ET Sun) 800-824-3005

Visit our Website at: www.leviton.com/verifeye

©2024 Leviton Manufacturing Co., Inc. All rights reserved. Subject to change without notice.

LES-G-8795D/F24-mm
REV JUN 2024