

200 CFH Residential Gas Submeter



DESCRIPTION

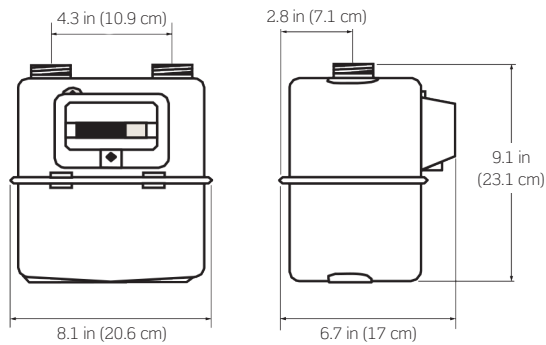
The 200 CFH Residential Gas Submeter is designed to accurately measure apartment-style submetering applications that utilize gas appliances and equipment. The aluminum construction and sealed register are suited to a number of common applications. The pulse output allows for integration of remote totalizers and communication devices.

FEATURES

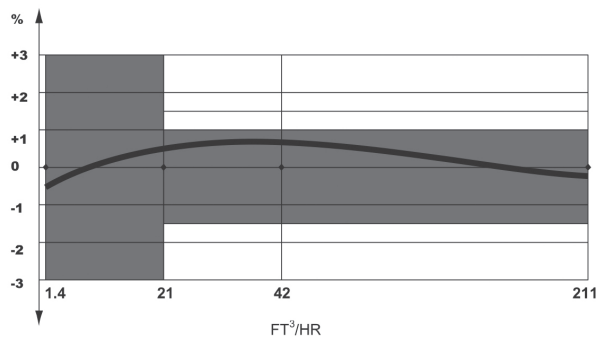
- Designed for gas submetering applications
- Pulse output
- Sealed register
- Aluminum body

SPECIFICATIONS	
Uses	Natural gas and LPG
Cyclic volume	0.42 ft ³ (12.8 sq cm)
Operating temperature	-4° to 122° F (-20° to 50° C)
Maximum operating pressure	7.25 PSI
Measuring range (minimum)	1.4 ft cubed per hour (0.42 m)
Measuring range (maximum)	211 ft cubed per hour (64.31 m)
Pulse transmitter	LF system, 12 VDC max 10 mA max, standard 1cubic ft/pulse (0.3 m)
Weight	4 lb (1.8 kg)

DIMENSIONS



TYPICAL ACCURACY CURVE



ORDERING INFORMATION

CAT. NO.	DESCRIPTION
GMP75-201	Residential Gas Meter with Pulse Output, 0.75 in NPT connectors included

Leviton Manufacturing Co., Inc. Energy Management, Controls and Automation

20497 SW Teton Avenue, Tualatin, OR 97062 tech line 800-959-6004 fax 503-404-5594

©2019 Leviton Manufacturing Co., Inc. All rights reserved. Subject to change without notice.

G-10494/D19-tb

200 CFH Residential Gas Submeter