

UniFi® Cloud Key Controller

Hybrid Cloud Key Technology with Integrated Application Server



Description

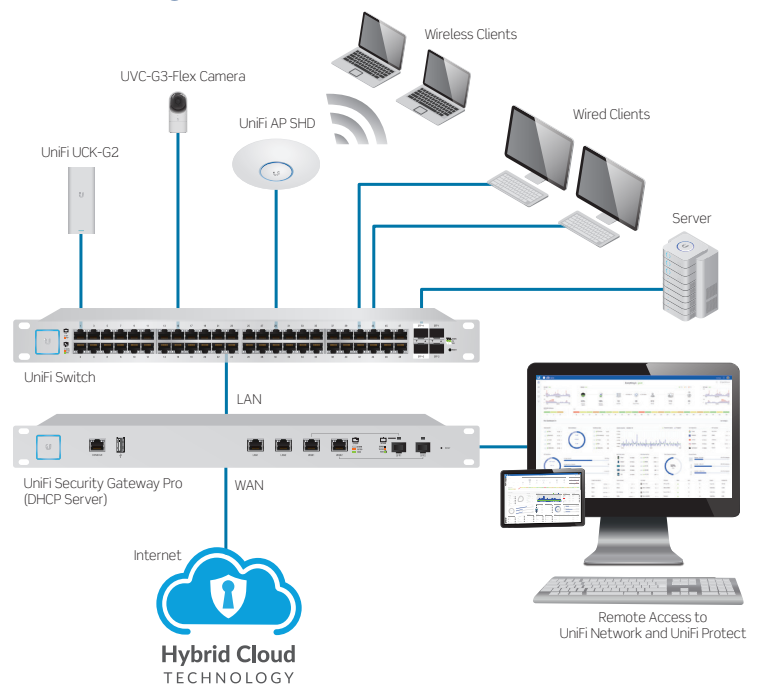
The UniFi® Cloud Key Controller is an integrated hardware controller and self-contained application server designed to help monitor and manage UniFi network devices. It features an eight-core processor with 2 GB RAM and 32 GB eMMC flash storage, and utilizes the latest version of the UniFi Controller with hybrid cloud technology.

Management software provided via permanently installed Cloud Key, one required per network, software hosted on technician's computer, or through APP. Recommended to use Cloud Key anytime access points is being used or if there are 2 or more switches on the network.

Features

- **Breakthrough Efficiency**—the UniFi Cloud Key Controller is capable of configuring and managing dozens of UniFi devices on a network, and offers an ultra-low energy PoE replacement for a dedicated server or computer, leaving behind no digital footprint
- **Hybrid Cloud Technology**—The cloud configuration provides a secure, private SSO (Single Sign-On) to access all UniFi deployments from anywhere in the world. With the hybrid cloud, a third-party hosted cloud service is not required, so all personal data and network information remains local and secure.
- **Incredible, Agile Scalability**—add, provision, configure, monitor, and manage all UniFi devices in one or hundreds of private networks all from a centralized control panel
- Easily accessible through a downloadable app or a standard web browser (Chrome recommended), the UniFi Cloud Key Controller is a powerful solution for managing UniFi networks across a campus or across the globe

Network Diagram



Product Data

EMC00-000

UniFi Network

Designed for convenient management, the UniFi Network Controller software allows administrators to configure and monitor UniFi devices using a graphical user interface. There are no separate software, licensing, hosting, or support fees.

- **Multi-Site Management**—a UniFi Cloud Key Controller installed at each deployment site provides an always-on, private UniFi cloud service. Every site is accessible through its assigned secure SSO. Each Cloud Key Controller is independent with its own network monitoring, configuration, maps, statistics, and admin accounts.
- **Improved User Experience**—intuitive and easy to navigate, the UI raises the bar for enterprise network management efficiency. Important network details are logically organized for a simplified, yet powerful, interface.
- **Network Overview**—a comprehensive overview of a network's health is readily available in the dashboard. Monitor a network's vitals and make on-the-fly adjustments as needed.
- **Detailed Analytics**—use the configurable reporting and analytics to monitor large user groups and expedite troubleshooting
- **LAN/WLAN Groups**—the UniFi Network Controller can manage flexible configurations of large deployments. Create multiple LAN and WLAN groups and assign them to the respective UniFi devices.
- **Wi-Fi Management**—use the UniFi Network Controller to provision UniFi APs, configure wireless networks, map out networks, and quickly manage system traffic
- Wi-Fi features include:
 - RF monitoring and device mapping
 - Detailed RF performance analysis
 - Band steering support
 - Guest portal/hotspot support
- **Router and Switch Management**—use the UniFi Controller to provision UniFi Security Gateways and Switches
- Configure a variety of features:
 - WAN/LAN/VLAN configuration
 - Operation mode (switching, mirroring, or aggregate) per port
 - PoE setting per port (device dependent)
 - Jumbo frame and flow control services
 - Monitor and analyze performance of each port



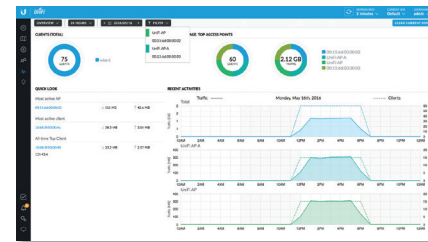
Dashboard

Visual representation of a network's status with basic information about each network segment














UniFi Mobile App

The downloadable app provides free remote cloud access to the UniFi Controller. Analyze and manage the health and traffic of the UniFi network from anywhere in the world.



Statistics

The Statistics tab provides a visual representation of the network clients and network traffic.

Icon	Description
	The Dashboard screen provides a visual overview of your network's status, including latency and throughput information for each client and device
	The Statistics screen provides a visual representation of the clients and network traffic on a managed UniFi network
	The Map section allows users to create maps (either upload custom images of your location(s) or use Google Maps) for a visual representation of your UniFi network and also view the system topology
	The Devices screen displays a list of UniFi devices managed by a UniFi Network controller
	The Clients screen displays a list of clients connected to UniFi devices managed by a UniFi Network controller
	The Insights screen lists detailed information about local and surrounding wireless networks, client and device statistics, security and connection detail, and other controller access information
	The Release Notes window provides information and details on the incorporated changes and/or updates to the latest UniFi Network controller software
	The Events screen provides a list of all events and activity taking place on your network, including errors and warnings
	The Alerts window provides a list of alerts and events occurring on a network
	The Settings screen provides detailed information about your UniFi Network controller and allows the user to add/change/update the site configuration
	The Live Chat Support screen provides access to a UniFi professional support representative available via live chat 24/7

Specifications

Processor	APQ8053 with 2 GB RAM
Enclosure	Anodized Aluminum
eMMC Memory	32 GB
Management Interface	UniFi App; UniFi Network Interface
Networking Interface	(1) 10/100/1000 Ethernet Port
Configuration Interface	BlueTooth LE with Ubiquiti Mobile Applications; web browser
Buttons	(1) Power; (1) Reset
LEDs	(1) Power, White/Blue
Power Method	Standard 802.3 af PoE, DC 5V 1A Powered
Supported Voltage Range	Standard 802.3 af PoE, DC 5V 1A
Max. Power Consumption	5W (PoE/Adapter)
Dimensions	1.07 x 1.84 x 4.71" (27.10 x 46.80 x 119.75 mm)
Weight	5.29 oz (150 g)
Operating Temperature/ Humidity	32° to 95° F (0° to 35° C); 20 to 80% non-condensing
Certifications	CE, FCC, IC

Ordering Information

Cloud Key Controller

Cat. No.	Description
EMC00-000	Cloud Key Controller with Integrated Application Server, White

Leviton Manufacturing Co., Inc. Lighting & Controls

20497 SW Teton Avenue, Tualatin, OR 97062 **tel** 800-736-6682 **tech line** (6:00AM-4:00PM PT Mon-Fri) 800-959-6004

©2021 Leviton Manufacturing Co., Inc. All rights reserved. Subject to change without notice.

Leviton Manufacturing Co., Inc. Lighting & Controls

20497 SW Teton Avenue, Tualatin, OR 97062 **tel** 800-736-6682 **tech line** (6:00AM-4:00PM PT Mon-Fri) 800-959-6004

Leviton Manufacturing Co., Inc. Global Headquarters

201 North Service Road, Melville, NY 11747-3138 **tel** 800-323-8920 **tech line** (8:30AM-7:00PM ET Mon-Fri) 800-824-3005

Visit our Website at: www.leviton.com/greenmaxdrc

©2021 Leviton Manufacturing Co., Inc. All rights reserved. Subject to change without notice.

LES-G-10580/A21-aa