

## RRP – Remote 4-Relay Panel for use with Z-MAX Master Relay Panels

### DESCRIPTION

The RRP (Remote Relay Panel) provides distributed switching of up to four 20 amp lighting circuits, enabling multiple units to be networked and controlled from a Z-MAX Master relay panel. With photocell, occupancy sensor and local switch inputs, RRP is an ideal solution for applications such as school classrooms, where daylight, occupancy sensors, local switching and central control scheduling are desired. Available as standard off the shelf with either 4, 20A relays or 4, 2-pole, 20A relays providing up to 8 remote controlled circuits.

RRP features the revolutionary, patent-pending Z-MAX switching circuit. Employed on the 120-277V standard relay model, the Z-MAX circuit closes relay contacts before they are energized, preventing arcing, pitting and associated wear. The result is an unprecedented 10,000,000 cycle life.

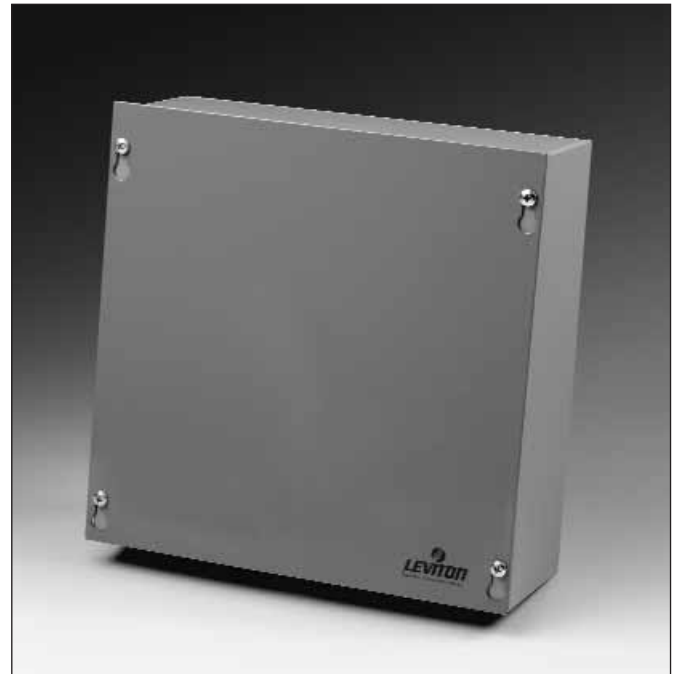
Designed in a compact 10"x10" standard electrical enclosure, RRP is engineered to be contractor friendly, quick to install, and simple to network.

### OPERATION

The RRP operates as a four 20 amp circuit relay cabinet with 4 analog inputs used in any combination of occupancy sensors, photocells and low-voltage switches. The unit is centrally controlled by a Z-MAX master cabinet. Any number of units may be networked together up to a maximum of 96 total relays.

### FEATURES

- Network ready for up to 96 total relays
- USB Port for software updates and network configuration
- 120V/277V dual voltage standard
- 347V available
- Angled terminals for easy screwdriver access
- Completely removable interior, allowing the empty box to be roughed-in without risk of damaging components
- Clearly labeled Access points allowing installer to locate optimum knock-out locations



- Rated for 100% load capacity
- Handles in-rush currents in excess of 50 times load current
- Low Voltage Switch Inputs support Leviton Low Voltage Switches and GE style, ON/OFF with optional LED output

### APPLICATIONS

- Remote, networked lighting control relays with local switching functions such as occupancy sensors, photo cells, manual switching and central control from a Z-MAX Lighting Management Panel
- Up to 24 RRP's (96 total relays) provide Expandable Relay Control
- Low Voltage Control
- Site Lighting
- Daylight Harvesting
- 4-Circuit Occupancy Sensor Control



### SPECIFICATION SUBMITTAL

JOB NAME: <input type="text"/>	CATALOG NUMBERS: <input type="text"/>	
JOB NUMBER: <input type="text"/>	<input type="text"/>	<input type="text"/>

# Product Specifications

## SPECIFICATIONS

### Electrical:

Input Voltage: 120V/277V or 347V. All Voltages  
50/60Hz Phase to Neutral

Non-Volatile lifetime memory

### Physical

Size: 10"W x 10"H x 4"D

Color: Blue

### Environmental

Operating Temperature Range: 0°C to +40°C

Storage Temperature Range: -10°C to +70°

### Warranty

10 Year Warranty

### Input:

(4) General Switch Inputs which can be:

- Leviton Low Voltage Switches
- 3 or 4 wire switch (GE Style, ON-OFF with optional LED output)
- Momentary Switches
- Maintained Switches
- Timed Inputs
- Occupancy Sensor
- Photocell

## ORDERING INFORMATION

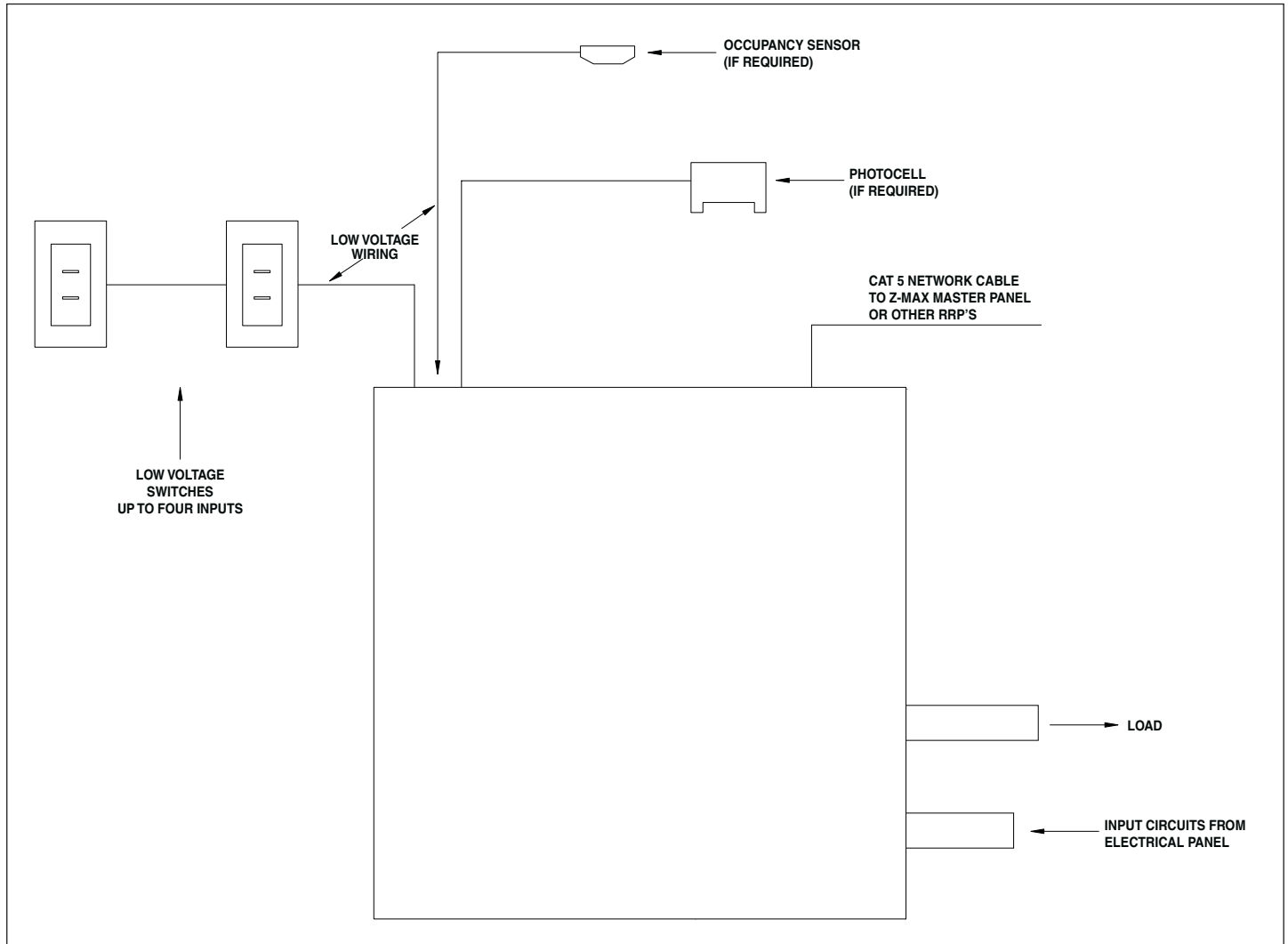
Description	Cat. No.	Rating
Remote Relay Panel with 4, Single Pole 20 Amp Relays for use with Z-MAX. 120/277V	re4sd-104	20A per relay
Remote Relay Panel with 4, Double Pole 20 Amp Relays for use with Z-MAX. 120/277V	re4sd-204	20A per relay
Remote Relay Panel with 4, Single Pole 20 Amp Relays for use with Z-MAX. 347V	re4sd-C04	20A per relay

## ACCESSORIES

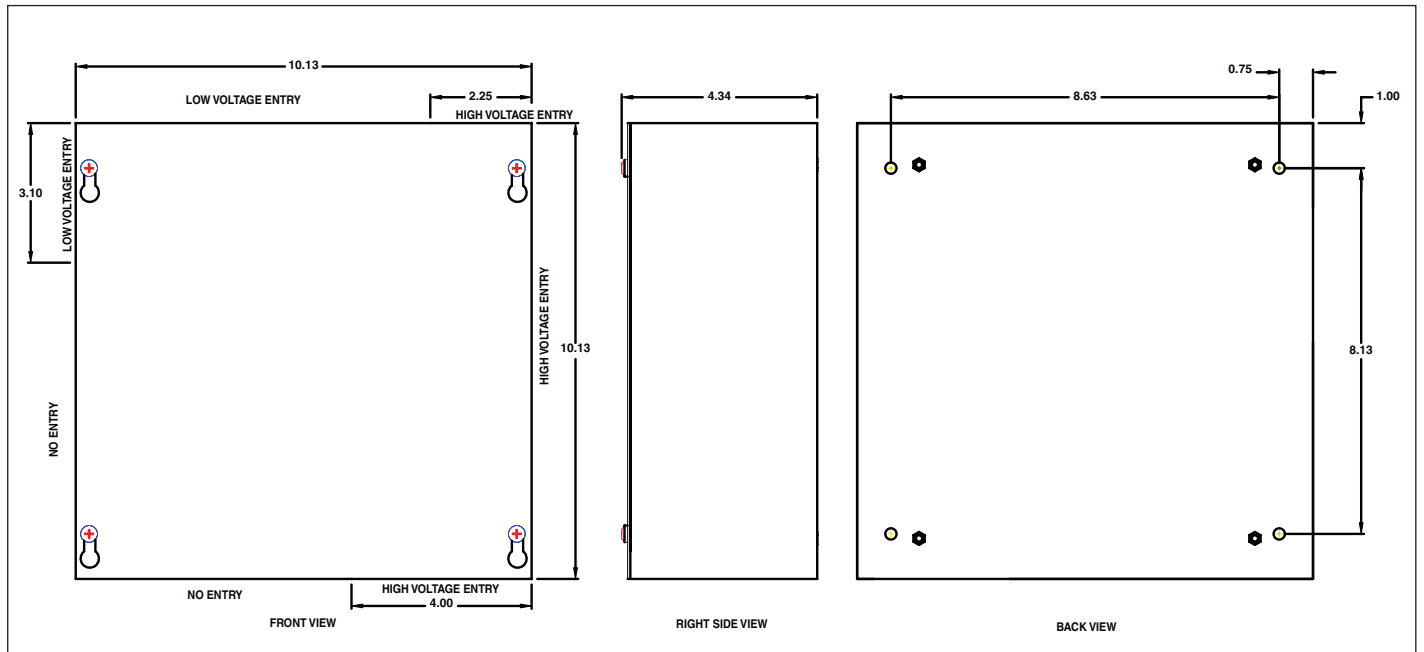
Model	Description
rac00-2sb	Low Voltage Switch Adapter, reduces required wire count of GE style switch by 1. (installed at the switch itself, cabinet has terminations for on/off/led/+v/com)
00lvs-01w	1 Button, Low Voltage Switch, White
00lvs-02w	2 Button, Low Voltage Switch, White
00lvs-03w	3 Button, Low Voltage Switch, White
00lvs-04w	4 Button, Low Voltage Switch, White
00lvs-05w	5 Button, Low Voltage Switch, White
00lvs-06w	6 Button, Low Voltage Switch, White
00lvs-08w	8 Button, Low Voltage Switch, White
00lvs-10w	10 Button, Low Voltage Switch, White
PCOUT-000	Outdoor 0-10V Photocell
PCIND-000	Indoor 0-10V Photocell
PCATR-000	Atrium 0-10V Photocell
PCSKY-000	Skylight 0-10V Photocell

# Remote Relay Panel

## TYPICAL INSTALLATION



## DIMENSIONAL DRAWING

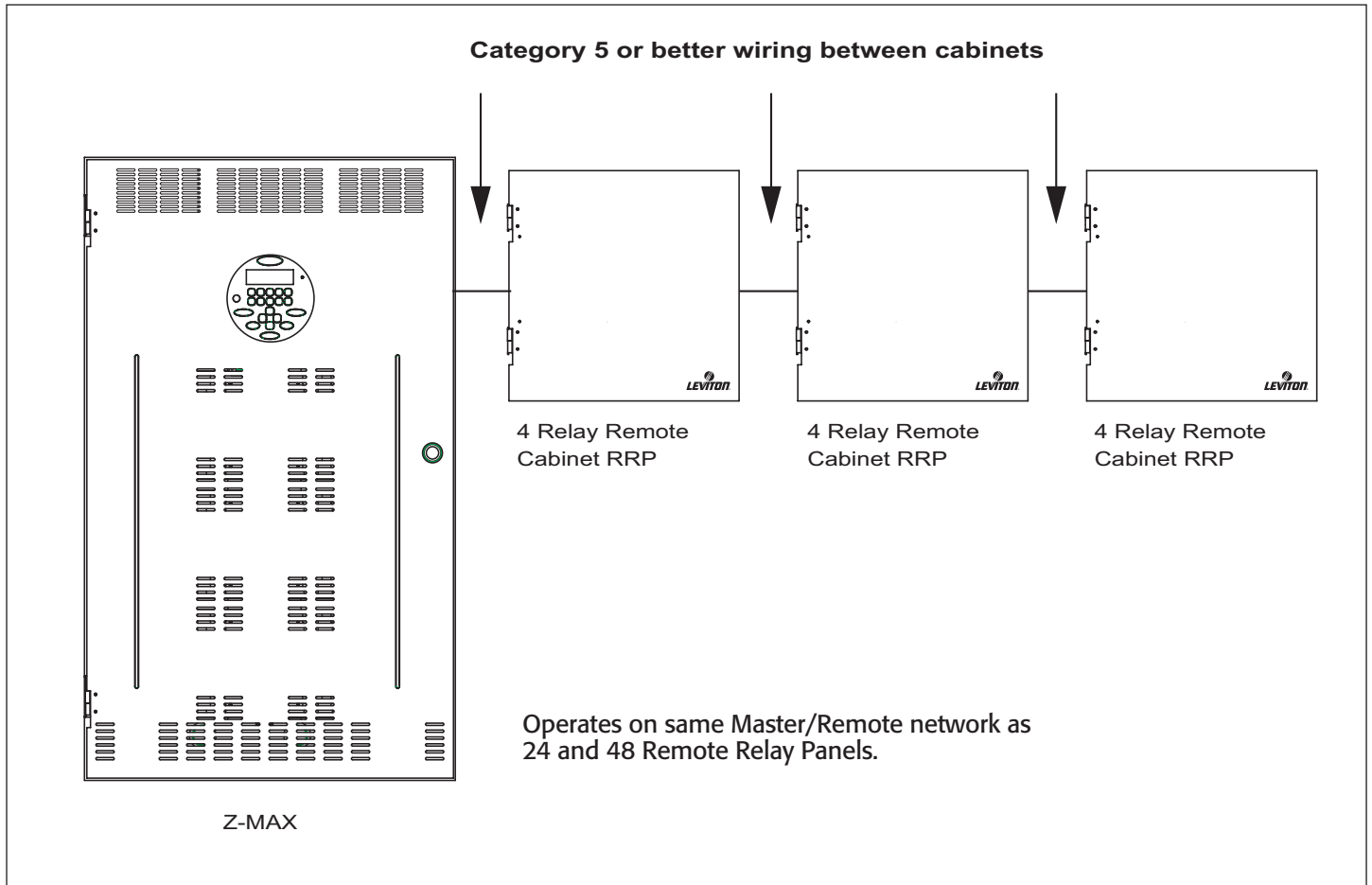


# Product Specifications

# Remote Relay Panel

## NETWORK TOPOLOGY

All Master/Remote panels must be connected in a daisy-chained fashion. For example, please consider the illustrations below:



**LEVITON** SPECIFICATION SUBMITTAL

JOB NAME: <input style="width: 95%;" type="text"/>	CATALOG NUMBERS: <input style="width: 60%;" type="text"/> <input style="width: 35%;" type="text"/>
JOB NUMBER: <input style="width: 80%;" type="text"/>	<input style="width: 30%;" type="text"/> <input style="width: 35%;" type="text"/>