

**8700 GX Series**



**8700 GX Series**

**THE 8700 SERIES LIGHTING CONTROL CONSOLES**

are everything the sophisticated lighting professional needs to make creating designs, programming shows, and executing masterpieces easy and rewarding. The consoles deliver all the power performance needed with features like an integral keyboard, touch screen and outputs for all your needs. Rugged and available in multiple models and capacities, the 8700 Series are the consoles for leading edge creation!

**APPLICATIONS**

- ADVANCED HIGH SCHOOL
- COLLEGIATE
- REGIONAL THEATER
- TOURING
- STUDIOS
- SPECIAL EVENTS
- CHURCH

**KEY FEATURES**

- CONVENTIONAL LIGHTING CONTROL
- AUTOMATED DEVICE CONTROL
- COMPLETE ETHERNET INTEGRATION
- FULL TRACKING BACKUP
- 24 OR 48 SUB-MASTERS
- EFFECTS GENERATION
- CAPTURE™ VISUALIZATION AND DESIGN PACKAGE
- OFF LINE EDITOR

**LEVITON SPECIFICATION SUBMITTAL**

JOB NAME:	CATALOG NUMBERS:	
<input type="text"/>	<input type="text"/>	<input type="text"/>
JOB NUMBER:	<input type="text"/>	<input type="text"/>

Leviton Manufacturing Co., Inc.  
**Lighting Management Systems Division**  
 Physical Address: 20497 SW Teton Ave, Tualatin, OR 97062-8812 USA  
 Mailing Address: PO Box 2210, Tualatin, OR 97062 USA  
 US Customer Service Telephone: (800) 736-6682  
 US Customer Service Fax: (503) 404-5594  
 US Technical Support: (800) 959-6004



Website: <http://www.leviton.com/lms>

# Product Specifications

## USER INTERFACE

- 24 or 48 Sub-Masters assignable as scenes, channels, effects, attribute control, rate control, or cue lists
- Crossfader for precise cue control using manual or automatic control
- Grand Master, Effects Master, and Sub-Master Master
- Vertical level wheel
- 3 horizontal Encoders for attribute control
- 1 horizontal Encoder for screen control
- 1 horizontal Encoder for library/bank control
- Multi-color Trackball for automated device position control and mouse emulation
- 10 soft keys, with bank control, to access groups, macros, positions, colors, etc.
- Alphanumeric keyboard integrated into drawer (except Tour formats)

## DISPLAYS

- (4) local monitors
- 240 x 320 pixel graphical display on main desk
- (1) Touch screen
- Each monitor can be configured to display:
  - Sub-Master and auto fader information
  - Cue List and cue parts
  - Events
  - Channel Levels
  - Spots
  - Data list

## REMOTE FOCUS

- Pocket PC application for communication to console over wireless Ethernet
- Dedicated remote focus handheld for wireless bi-directional communication to/from console

## SETUP

- Interactive patch across all channels, local and network
- Response curves – custom curves can be applied to any conventional channels
- Fixtures – complete library on-board with easy update from disk, USB, or Ethernet
- Help
- Self-Test – all console functions have built in test routines
- Print to text – for hard-copy record of all show data
- Data Storage – all data can be stored from any of the following:
  - Internal data storage
  - USB
  - Ethernet
  - Floppy
- Merge selected parts of any stored show into current show
- Languages:
  - English
  - French
  - Spanish
  - German
- Software updates:
  - Available from website
  - Update via USB, Ethernet, or floppy disk
- Off Line Editor support
- Universal power supply with "shut down" control (85-265V/50-60Hz, 150W)

## PLAYBACK

- 24 or 48 Masters depending on model:
  - Sub-Master recall
  - Cue list
  - Effects
  - Rate/Speed control
- Effects live modification:
  - Speed
  - Pattern
  - Mode
  - Direction
- HTP, LTP, and Priority for each channel

## EDITING

- Touch-screen – access to groups, macros, palettes, libraries, figures, and more!
- Blind and Live Editors
- Palette libraries(Banks) for quick recall of:
  - Position
  - Color
  - Beam
  - Gobo
  - Dimmer
  - Extra
- Fan-Out and Flip
- Effects:
  - Standard chase based effects:
  - Direction
  - Attack
  - Rate
- Automatic Shape Creation adjustment for:
  - Amplitude
  - Velocity
  - Offset
- Rescue – Undoes what was just done
- Quick creation functions:
  - Copy
  - Exam
  - Modify
  - Exchange
  - Edit +
  - Next
  - Test
- Built-In Alphanumeric keyboard/entry
- Complex command strings with Thru, AT, and Except modifiers
- Horizontal Encoders for access to attributes, palettes, or libraries
- Horizontal Encoder for quick change of display or libraries
- Vertical Encoder for quick and precise attribute adjustment
- Macros – easily recall sequences of keystrokes

## RECORDING

- Immediate next cue recording by a double press of the record button, and other programming shortcuts
- Active channels only recorded
- Multiple cue parts, each with own timing for simultaneous complex event recall
- Link macros, events, etc. to cue execution
- 6 Pre-defined attribute timing patterns can be applied to any cue
- Learn Time feature which automatically times playback based on manual execution
- Cue times entry via cue-list or command line
- Default cue time definition

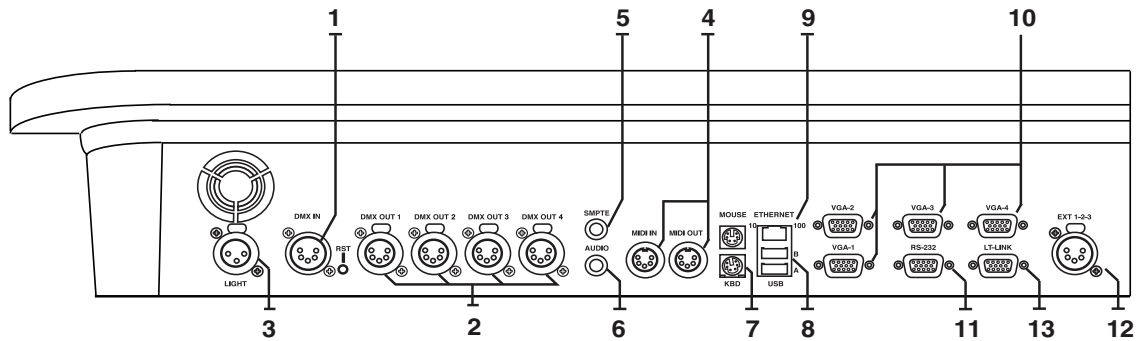
## ACCESSORIES

- Power Cable
- Worklights
- Road Case
- Capture™ Light
- Quick Start Guide
- Reference Card
- CD with Manual, Off-line Editing, and other Materials

## PHYSICAL CHARACTERISTICS

- P8724-GX (W x D x H (front) > H (back))
  - 36" x 17" x 3" > 5" (920 x 442 x 73 > 126mm)
  - Road Case: 39" x 26" x 9" (980 x 660 x 250mm)
  - Console weight: 41.4 lbs. (18.8 kg.)
  - Shipping weight: 97 lbs. (44 kg.)
- P8748-GX (W x D x H (front) > H (back))
  - 45" x 17" x 3" > 5" (1155 x 442 x 70 > 130mm)
  - Road Case: 48" x 26" x 9" (1220 x 660 x 250mm)
  - Console weight: 48.5 lbs. (22 kg.)
  - Shipping weight: 112 lbs. (51 kg.)
- P8724-GXT (W x D x H)
  - 27" x 22" x 6" (675 x 550 x 155mm)
  - Console weight: 47.4 lbs. (21.5 kg.)
  - Shipping weight: 46 lbs. (21 kg.)

## INPUT/OUTPUT



1. DMX Input – can be attached to channel levels, spot control, merge to any output, macro execution
2. DMX Outputs - 2048 DMX Channels local, 4096 network
3. Work light – adjustable position and level work light
4. MIDI IN/OUT – MIDI, MTC, and MIDI Patch Support. Also MIDI Time Code interface to event list which can execute memories, effects, crossfades, macros, or RS-232 command
5. SMTP – SMTP interface to Events List which can execute memories, effects, crossfades, macros, or RS-232 command
6. Audio Input – (3) filters on the audio input which can be associated to any key or fader on the console
7. Keyboard/Mouse – for connection to external keyboard and mouse
8. USB – for application software update, fixture update, show i/o
9. Ethernet –
  - a. ACN Ready
  - b. Connect multiple consoles together
    - i. Full Tracking Backup
    - ii. Master/Master
    - iii. Master/Slave
  - c. Connect to PC
    - i. Visualization
    - ii. Full Tracking Backup
  - d. Upload/Download of all console data between PC or other console
  - e. Download application software from PC
- f. DMX Distribution over Ethernet
- g. Wireless Remote Focus
- h. Colornet™
- i. Pathport™
- j. Sandnet™
- k. Art-net™
 

\* requires NPC-IDD or NPC-PDD on network
10. VGA Outputs – (2) included standard, (2) optional
11. RS-232 – Custom RS-232 ASCII output commands can be written to interface with external devices
12. External Triggers – (3) triggers which can be associated with any console key
13. Expansion Port
 

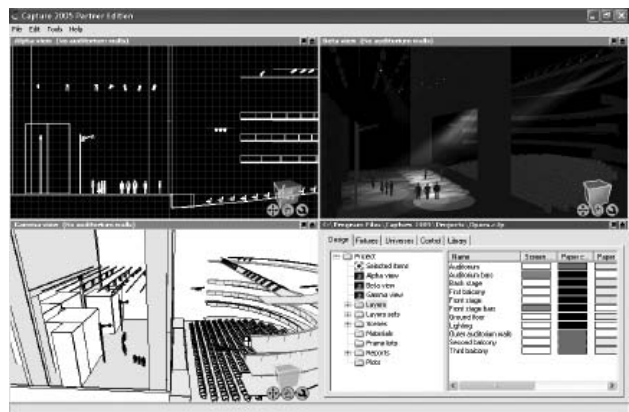
\*\*Not Shown: Power Input and Left Side Work light

## TOURING MODEL

- Convenient and rugged 'Briefcase' design
- Includes (1) display
- Hinged removable lid
- Included tray for accessories storage



## CAPTURE™ LIGHT VISUALIZATION & DESIGN PACKAGE



- Drag and drop layout of basic elements for quick design creation.
- Multiple views to assist with 3D layout, fixture aiming and design conceptualization.
- Rendered lit views for full design realization.
- Completed integrated visualization with the 8700 series for off line programming.

## CAPACITIES AND MODEL COMPARISON

	Leviton		
	8700 GX	8700 GS	8700 GL
Channels (Max Conventional & Automated)	2048	1024	512
DMX Outputs Channels (Local + Net)	4096		
Local DMX Output Ports	4	2	1
DMX Inputs	1		
Max Shows	Unlimited		
Cues	20,000		
Cue Parts	9		
Groups	2000		
Macros	2000		
Effects	2000		
Palettes	99 each of Position, Effect, Color, Gobo, Beam, Extra		
Handles	24 or 48	24 or 48	24
Sub-Master Pages	2000		

**8700 GX Series**

## ORDERING INFORMATION

Cat. No.	Description
P8724-GX	8700 Series, GX model, with touch screen and 24 Sub-Masters
P8748-GX	8700 Series, GX model, with touch screen and 48 Sub-Masters
P8724-GXT	8700 Series, GX Touring model, with touch screen and 24 Sub-Masters

## ACCESSORIES

Cat. No.	Description
TAMON-F17	17" Flatscreen LCD monitor, black
TAMON-F19	19" Flatscreen LCD monitor, black
TATBL-048	48" Wide console work table, with locking wheels
P87WR-PP1	Complete Wireless Remote Focus Package to include remote focus software, Pocket PC device, and access point, and Ethernet crossover cable
P87WR-PSW	Wireless Remote Focus software for user provided Pocket PC
P87WR-DP1	Dedicated RFU Package to include (1) handheld remote, (1) console interface, and cable for connection to console
P87WR-DH	Dedicated RFU remote only
P8700-TP1	H.O.T. Workshop package to include 1-1/2 days of hands-on training and limited airfare, lodging and meals reimbursement. Contact your Leviton sales representative for additional information.
CPU0D-GRP	Desktop computer to be used with 8700 Series Consoles. Not required for console operation, however, the Capture Visualization & Design package does require a PC with Windows O/S to operate. Includes keyboard and mouse. Monitor is required and is sold separately.
CPU0L-GRP	Laptop computer to be used with 8700 Series Consoles. See notes on desktop computer above
P87SW-CUP	Capture™ Upgrade from Light to Pro Version.

Leviton Manufacturing Co., Inc.  
**Lighting Management Systems Division**  
 Physical Address: 20497 SW Teton Ave, Tualatin, OR 97062-8812 USA  
 Mailing Address: PO Box 2210, Tualatin, OR 97062 USA

US Customer Service Telephone: (800) 736-6682  
 US Customer Service Fax: (503) 404-5594  
 US Technical Support: (800) 959-6004

Website: <http://www.leviton.com/lms>

