

The Omni LTe Controller

omni™

APPLICATION

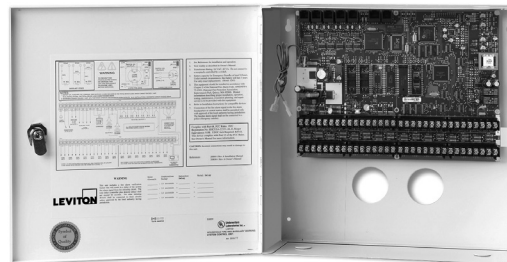
The Omni LTe is a full sized security and automation system with flash memory and five serial ports, as well as an Ethernet port for remote access. The system provides enhanced comfort, safety, convenience, and energy savings by coordinating audio/video, lighting, heating and air, security, scenes and messaging based on activity and schedule. Using an integration with HomeSeer HomeTroller, you may integrate an Amazon Alexa device for voice control of lighting, temperature, and macros.

FEATURES AND BENEFITS

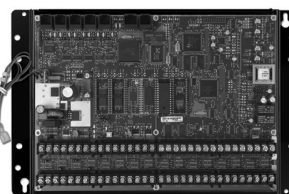
Security

Omni LTe controllers are UL Listed, CP-01 compliant security and fire for residential installations. They detect intrusion, smoke and fire, carbon monoxide, water, vehicles, motion, and other hazards with wireless or wired sensors. Security zones are fully configurable and expandable. You may set the validity of user codes by time and authority. For example, the security code or access card for the nanny, housekeeper, or contractor only works during specified times. The Omni LTe supervises zones, battery, and bell circuits.

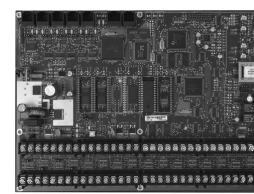
Surveillance cameras may be added to Omni LTe systems. Activate video recording when an alarm trips, and send an alert to a cell phone or e-mail address. Omni LTe systems have a built-in digital communicator for use with a central station and can dial up to 8 additional phone numbers chosen by the owner for voice notification.



20A00-70 Omni LTe in Enclosure



20A00-72 Omni LTe for Structured Wiring Enclosures



20A00-73 Omni LTe - Board Only

Lighting

The Omni LTe system can control your home lighting by schedule, motion detection, door openings, sunrise, sunset, alarm activation and more. It provides the benefits of a sophisticated lighting control system by setting scenes, fades, and dimming levels. Omni LTe supports Leviton Lighting Control products including HLC, Omni-Bus, Vizia RF +, Z-Wave, and ZigBee. Supported products include dimmers, switches, remote controls, and plug-in modules.

Energy Management

If you add Leviton's Omnistat2 wireless or wired communicating thermostats, you may control your temperatures through your Omni LTe system by schedule and activity – such as home, asleep, away, room occupancy, outdoor temperature, etc. Leviton temperature and humidity sensors allow for temperature based programming of events in your Omni LTe controller.

Leviton Manufacturing Co., Inc. Global Headquarters

201 N. Service Rd. Melville, NY 11747-3138 Tech Line: 1-800-824-3005 Fax: 1-800-832-9538

Leviton Manufacturing Co., Inc. Energy Management, Controls and Automation.

865 Fulton St., Suite 500, New Orleans, LA, 70130 Tel: 1-504-608-9001

Visit our Website at: www.leviton.com/automation

©2017 Leviton Manufacturing Co., Inc. All rights reserved. Subject to change without notice.

They may be used to activate programs for controlling temperatures in attics, garages, greenhouses, basements, wine cellars, or coolers. ZigBee devices allow for wireless control of water heaters, pumps, fountains, and much more.

Audio/Video

The Omni LTe connects to Leviton's BitWise AV control systems. Trigger automation commands based on changes in the Omni automation system. Activate all appropriate A/V equipment, lower a projection screen, close the window coverings, adjust the temperature, dim the lights, and lock all doors. Create custom interfaces using BitWise Project Editor.

LTe supports the following protocols and products: X-10, UPB, Omni-Bus, ZigBee, Vizia RF Z-Wave, Clipsal C-Bus, Dynalite, Coolmaster, KNX, Hi-Fi, Hi-Fi 2

WARRANTY INFORMATION

Two-Year Limited Warranty

Leviton Manufacturing Co., Inc. Global Headquarters

201 N. Service Rd. Melville, NY 11747-3138 Tech Line: 1-800-824-3005 Fax: 1-800-832-9538

Leviton Manufacturing Co., Inc. Energy Management, Controls and Automation.

865 Fulton St., Suite 500, New Orleans, LA, 70130 Tel: 1-504-608-9001

Visit our Website at: www.leviton.com/automation

©2017 Leviton Manufacturing Co., Inc. All rights reserved. Subject to change without notice.

PRODUCT DATA



FEATURES	MAXIMUMS
HLC Lighting/Rooms	4
Lighting Scenes	32
Lighting Addresses	32
Zones	16
Zone Expansion Total	16
2 wire smoke loops	4
4 wire smokes	16
Thermostats	4
Consoles / Keypads *	4
IP Touchscreens: OmniTouch 7 / OmniTouchPro	16
12 volt triggers	8
User Settings	10
Access Control Card Readers	4
Access Control Card / Key Tag	16
Serial ports	5
Ethernet port	Yes
Audio Control	Hi-Fi, Hi-Fi 2
Flash Memory	Yes
User Codes	16
Programming Lines	300
Vocabulary	550
Custom Vocabulary	No
Depluggable Terminal Strips	Yes
Format	Contact ID, 4/2, 3/1
Transformer Required	24V (40VA)
Battery (Typical)	12V (7Ah)
Aux current Max	1A
Bell current max	1A
Aux current (UL 24 hr)	250mA
Bell current (UL 24 hr)	300mA
Number of 16 Zone Hardwire Expanders (10A06-1) Supported	0
Number of Expansion Boards (17A00-x) Supported	0
Number of Expansion Boards (22A00-1) Supported	0
Number of Wireless Receivers (45A00-1 or 42A00-1) Supported	1
UL Listing	Residential: Burglar/Fire

Omni LTe Controller

Leviton Manufacturing Co., Inc. Global Headquarters

201 N. Service Rd. Melville, NY 11747-3138 Tech Line: 1-800-824-3005 Fax: 1-800-832-9538

Leviton Manufacturing Co., Inc. Energy Management, Controls and Automation.

865 Fulton St., Suite 500, New Orleans, LA, 70130 Tel: 1-504-608-9001

Visit our Website at: www.leviton.com/automation

©2017 Leviton Manufacturing Co., Inc. All rights reserved. Subject to change without notice.

PRODUCT DATA



Controller - In Enclosure

13.25" W x 13.375" H x 4.625" D

Approximate Weight: 13.30 lbs

Controller - Board Only

11.0" W x 8.0" H x 1.25" D

Approximate Weight: 1.6 lbs

SERIAL PORTS

HLC Lighting Control UPB PIM (#36A00-1)
 Leviton Vizia RF + Z-Wave (#VRCOP),
 ZigBee (#81A00-3)
 KNX Gateway, (#97A00-1)
 Access Control Readers (#75A00, #54A00)
 Clipsal, Dynalite, Coolmaster, Serial Connectivity
 Cable (#36A05-4), Serial to PC Cable (#21A05-2)

AUDIO

Omni Console w/ Spkr/Mic (#33A00-4)
 Surface Speaker/Mic (#28A00-1)
 Flush Speaker/Mic (#28A00-2)
 Two-Way Voice Module (#10A11-1)

ETHERNET PORT

Snaplink for Windows, Snaplink
 Mobile for Android/iPhone and
 iOS, PC Access, OmniTouch 7
 Touchscreen, Omni-Bus

12V BATTERY

EARTH GROUND

TRANSFORMER 24V/40VA

USER INTERFACE

Omni Consoles (#33A00)

EXPANSION

Wireless Receiver (#45A00-1)
 Wireless Receiver for GE (#42A00-2)

Two-Way X-10

TELEPHONE INTERFACE

- Land line
- Cellular Communications Center (#70A00)
- PC Access

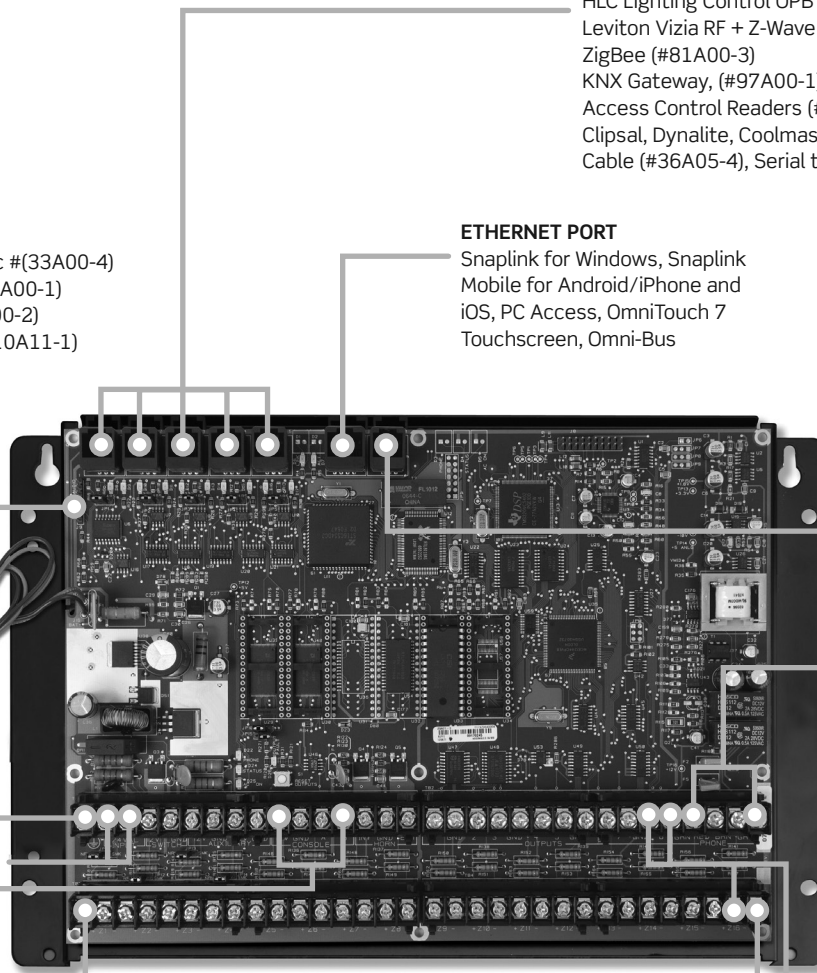
SECURITY & ENERGY MANAGEMENT

Temperature Sensor (#31A00-7)
 Temperature/Humidity Sensor (#31A00-8)
 Standard Security/Fire/Environmental
 Sensors

COMFORT & CONVENIENCE

Omnistat2 Thermostats

Omni LTe Controller



California Title 24 Compliant

CP-01 Compliant

Omni systems are designed for professional installation. Licensing requirements vary by area.

Leviton Manufacturing Co., Inc. Global Headquarters

201 N. Service Rd. Melville, NY 11747-3138 Tech Line: 1-800-824-3005 Fax: 1-800-832-9538

Leviton Manufacturing Co., Inc. Energy Management, Controls and Automation.

865 Fulton St., Suite 500, New Orleans, LA, 70130 Tel: 1-504-608-9001

Visit our Website at: www.leviton.com/automation

©2017 Leviton Manufacturing Co., Inc. All rights reserved. Subject to change without notice.

SAT-10030
 REV OCT 2017