

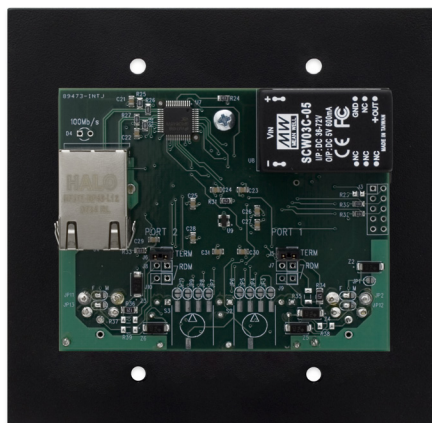
# NPC2D

The 2Port Network Protocol converter, NPC2D, offers exceptionally cost-effective DMX-over-Ethernet connectivity in a package well suited for integration with permanently installed stage, studio, and architectural lighting systems. The extensive protocol support enables input and output for the majority of today's entertainment, as well as architectural, lighting control systems, show controllers, and visualizers.

The two DMX ports are bi-directional for maximum flexibility so that any port, independent of the XLR connector gender, can be configured as an input or output. NPC2D supports 10BaseT and 100BaseT for unparalleled throughput and easy integration with any network topology. Auto MDI/MDI-X eliminates the need to worry about straight vs. cross-over cabling. Power over Ethernet provides effortless power via readily available PoE switches or mid-span power injectors.



Front



Back

## APPLICATIONS

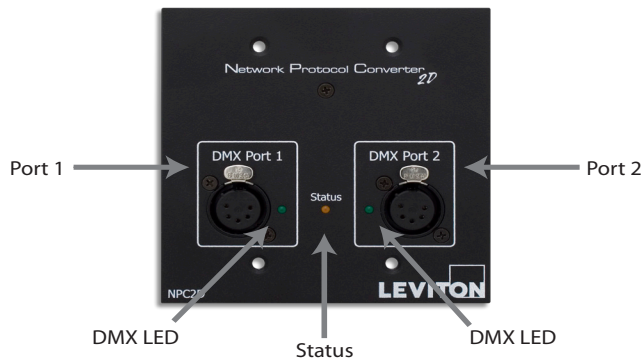
- DMX distribution over Ethernet
- Theaters
- Cafeteriums
- Places of assembly

## FEATURES

- Ports configurable as Inputs or Outputs
- Protocols supported:
  - ACN
  - 8700/HydraNet
  - SandNet
  - ColorNet II
  - Pathport
- Power over Ethernet - IEEE 802.3af
- Fits in deep 2-gang device back box
- Specialty back-boxes available for Surface, Pipe, C-Clamp mounting
- Pipe/Thru other port for protocol conversion
- Standard NEMA 2-gang wall-plate for installed systems
- Self-healing ESD and transient protection
- Available with male or female XLRs or combination
- LEDs indicate Ethernet and DMX port activity
- Dedicated area for permanent labeling
- Supports both 10BaseT and 100BaseT

- Supports 8700 console, Piccolo, Piccolo Scan, NPC, and other colornet devices
- RDM ready with user configurable EOL and RDM termination
- Free software for configuration, testing, and management
- Auto MDI-MDI-X for straight or cross-over CAT5/6 cabling
- Dimensions: 4-1/2" x 4-1/2" x 1-5/8"

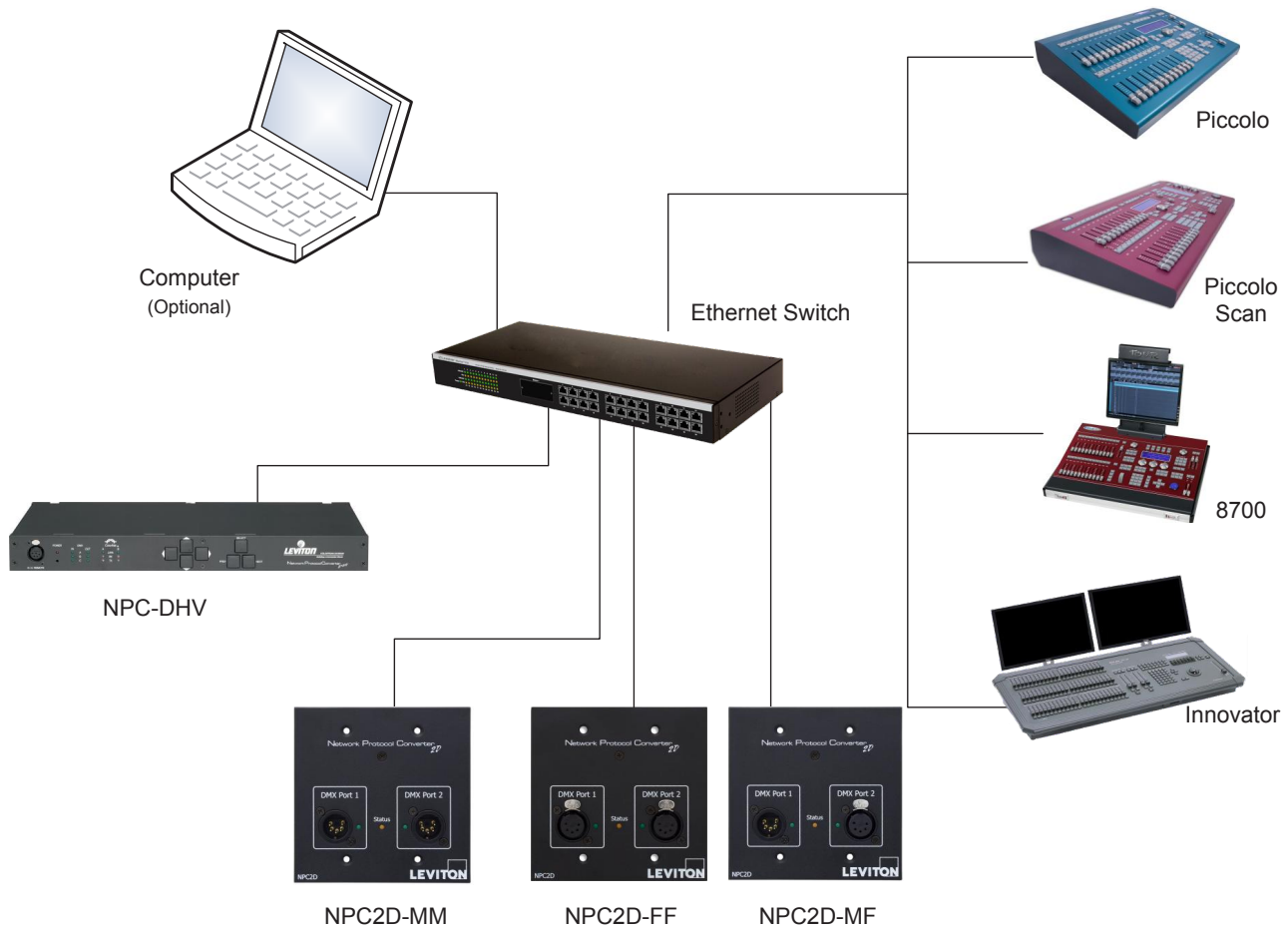
## DEVICE FEATURES



## Leviton Mfg. Co., Inc. Lighting Management Systems

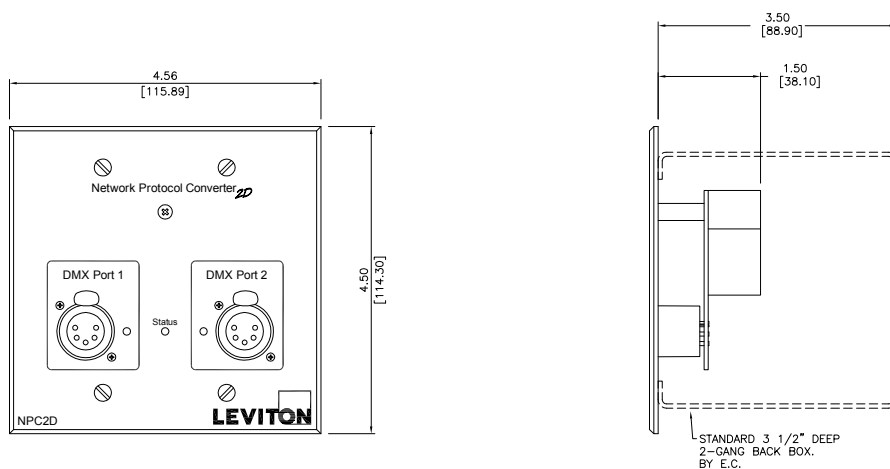
20497 SW Teton Avenue, Tualatin, OR 97062 1-800-736-6682 Tech Line: 1-800-959-6004 Fax: 503-404-5594 www.leviton.com/lms  
 © 2010 Leviton Manufacturing Co., Inc. All rights reserved. Subject to change without notice.

SYSTEM DIAGRAM



NPC2D

DIMENSIONAL DIAGRAM



ORDERING INFORMATION

CAT. NO.	DESCRIPTION
NPC2D-FF	2 DMX Port Network Protocol Converter with (2) Female 5 pin XLR receptacles
NPC2D-MM	2 DMX Port Network Protocol Converter with (2) Male 5 pin XLR receptacles
NPC2D-MF	2 DMX Port Network Protocol Converter with (1) Female and (1) Male 5 pin XLR receptacle

Leviton Mfg. Co., Inc. Lighting Management Systems

20497 SW Teton Avenue, Tualatin, OR 97062 1-800-736-6682 Tech Line: 1-800-959-6004 Fax: 503-404-5594 www.leviton.com/lms  
 © 2010 Leviton Manufacturing Co., Inc. All rights reserved. Subject to change without notice.