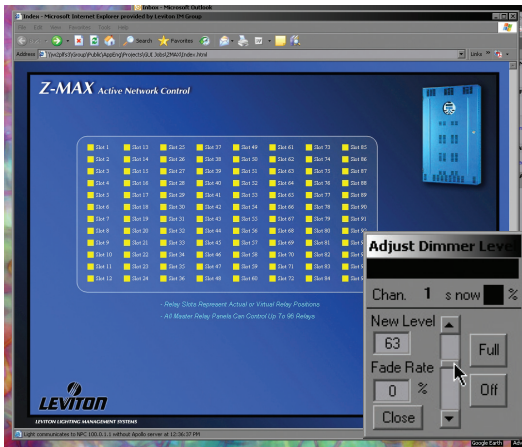
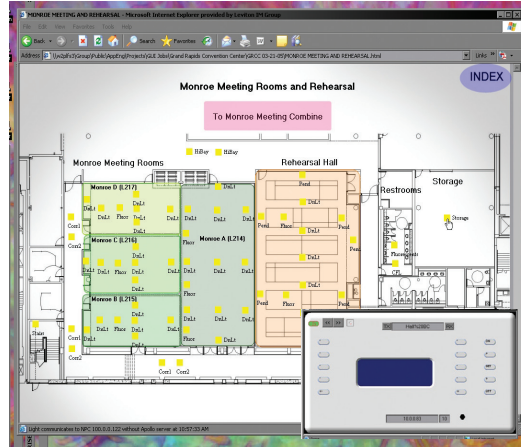


LumaGraphics Lighting Control



Basic Version



Pro Version

DESCRIPTION

LumaGraphics is an application-specific graphical user interface with pictorial views of lighting control systems and point-and-click centralized control for the monitoring of every device in your facility. LumaGraphics is available in two versions: the “Pro” Version* offers complete customization and control of layout and the “Basic” Version offers simple control points for monitoring lighting levels, creating simple presets, and setting new levels. LumaGraphics is the ultimate in control and convenience for convention centers, banquet & meeting facilities, and other complex lighting control systems.

BASIC VERSION FEATURES

- LumaGraphics “Basic” offers a schedule style layout with control points of individual zones. Current level of each zone can be viewed and a level can be set simultaneously for one or more zones. Both dimming and relay loads are supported.
- Ethernet control through Network Protocol Converter (NPC)
 - BACnet™ or ColorNet Communication
 - All zones on one page
 - Available in 8, 24, 48 or 96 continuous zones of control
 - One virtual preset panel with (8) presets
 - Customizable with custom zone labels and project name

PRO VERSION FEATURES

LumaGraphics “Pro” is fully customizable overlaying facility graphics with Leviton lighting control.

- Depicting floor plan backgrounds is a common practice with “light-objects” (discrete or group circuit control points) and control station or preset panels placed relative to the layout.
- Floor plans can be integrated as a background graphic
 - Ethernet control through NPC
 - Visual control of room partitions
 - Individual circuit & group controls
 - Custom layout specific for each project
 - Remote view and control of D8000 stations
 - Programmable presets & virtual preset panels
 - Remote management of channel assignment to preset
 - Make changes to multiple circuits with “drag-to-select” feature
 - BACnet or ColorNet Communication

*Note: Custom quotation required for Pro Version

Feature	BACNET	COLORNET
Ethernet Control Through NPC	X	X
All zones on one page	X	X
Available in 8, 24, 48 or 96 continuous zones of control	X	X
Floor plans can be integrated as a background graphic	X	X
Visual control of room partitions	—	X
Individual circuit & group controls	X	X
Custom layout specific for each product	X	X
Remote view and control of D8000 stations	—	X
Programmable presets & virtual preset panels	X	X
Remote management of channel assignment to preset	—	X
Make changes to multiple circuits with “drag-to-select”	—	X

PRODUCT DATA



LUMAGRAPHS SYSTEM REQUIREMENTS

Computer must meet these minimum requirements:

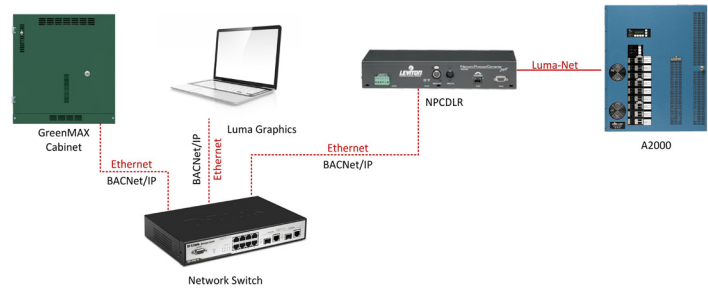
- Pentium class processor, 1GHz or better
- Microsoft Windows 7 or Windows XP Operating System
- Microsoft Internet Explorer version 7.0 or higher
- All service packs installed for operating system & Internet Explorer
- 512MB RAM
- 300MB available hard disk space
- 10/100Base-T wired, Ethernet TCP/IP network connectivity
- CD-ROM Drive
- XGA video adapter, 1024x768 resolution
- Monitor or display device
- Keyboard and pointing device

Also required:

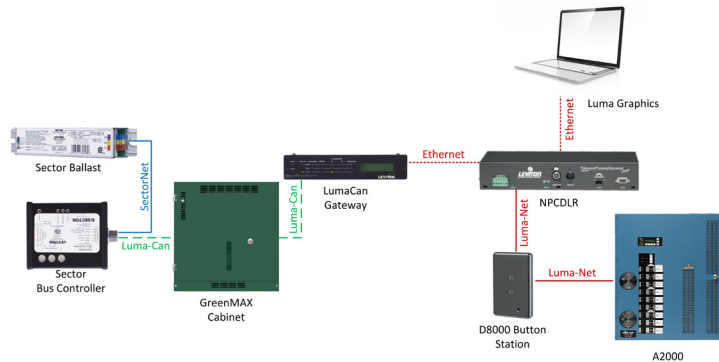
- For ColorNet Communication
 - Leviton Network Protocol Converter (NPC XP/DLR)
 - Connectivity to Lighting Control
- For BACnet Communication
 - GreenMAX® Relay Panel or NPC XP/DLR

TYPICAL SYSTEM LAYOUT

LumaGraphics Speaking BACnet/IP to Leviton Systems



LumaGraphics Speaking ColorNet to Leviton Systems



ORDERING INFORMATION

CAT. NO.	DESCRIPTION
LGB00-008	LumaGraphics "Basic" for dimming or relay systems. Includes on/off or dimming control for 8, 24, 48, 96, 144, or 192 custom named zones on one page, and one virtual control panel with 8 presets. Does not require an additional field service trip, however, product will be installed at the field service trip required for the project.
LGB00-024	
LGB00-048	
LGB00-096	
LGB00-144	
LGB00-192	

LEVITON SPECIFICATION SUBMITTAL

JOB NAME:	CATALOG NUMBERS:
JOB NUMBER:	

Leviton Manufacturing Co., Inc. Lighting & Energy Solutions

20497 SW Teton Avenue, Tualatin, OR 97062 • Tel: 1-800-736-6682 • FAX: 503-404-5594 • Tech Line (6:00AM-4:00PM P.S.T. Mon-Fri): 1-800-959-6004

Leviton Manufacturing Co., Inc. Global Headquarters

201 N. Service Rd. Melville, NY 11747-3138 • Tech Line: 1-800-824-3005 • Fax: 1-800-832-9538

Leviton Manufacturing of Canada, Ltd.

165 Hymus Boulevard, Pointe Claire, Quebec H9R 1E9 • Telephone: 1-800-469-7890 • FAX: 1-800-563-1853

Leviton S. de R.L. de C.V.

Lago Tana 43, Mexico DF, Mexico CP 11290 • Tel. (+52) 55-5082-1040 • FAX: (+52) 5386-1797 • www.leviton.com.mx

Visit our Website at: www.leviton.com/les

© 2014 Leviton Manufacturing Co., Inc. All rights reserved. Subject to change without notice.