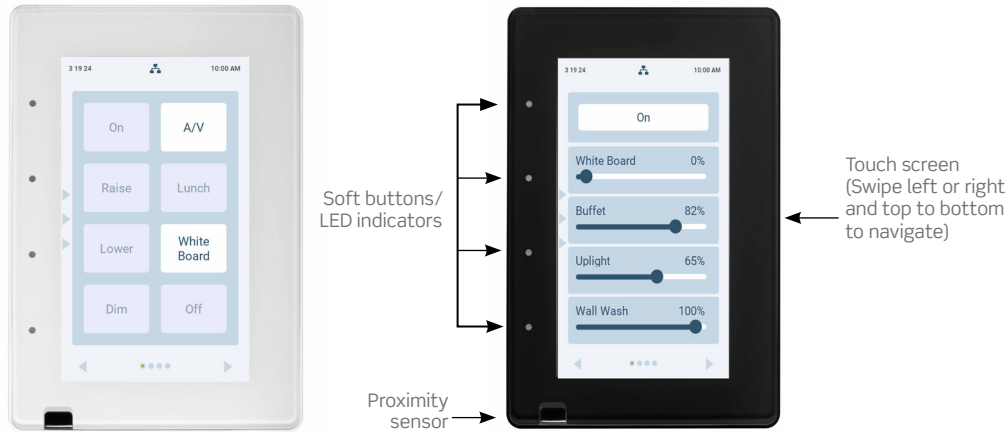


GreenMAX® DRC Touch Screen



Description

The GreenMAX® DRC Touch Screen is a single gang touch screen designed as an integral component of a GreenMAX DRC system. It can replace multi-button keypads and offers pushbutton style control and easy labeling.

This system can be used to comply with IECC, ASHRAE 90.1, and 2022 Title 24, Part 6 occupancy/vacancy sensing, multi-level lighting, daylight harvesting, partial-ON, partial-OFF, and receptacle control requirements. Listed on the DesignLights Consortium® (DLC) Qualified Product List (QPL) for Networked Lighting Controls (NLC).

The GreenMAX DRC Room Control System offers a fully distributed room control system, with each room operating independently of others, without dependence on network processors or centralized controllers.

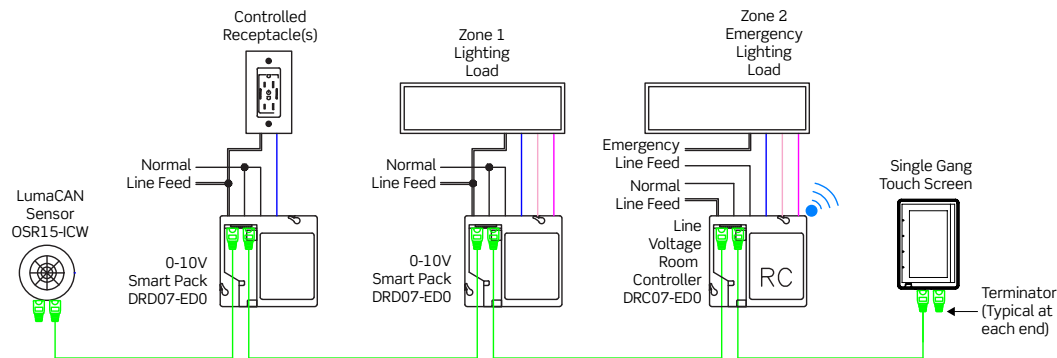
GreenMAX DRC App

Wirelessly commission, configure, control, monitor and provision the GreenMAX DRC system using the GreenMAX DRC App designed for any WiFi-enabled Android or iOS smart device.

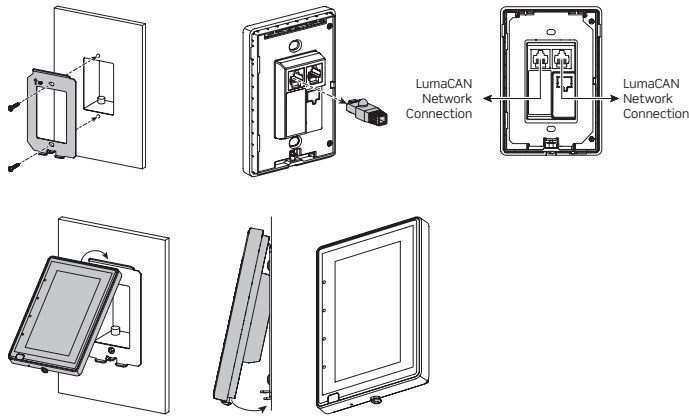
Features

- Can be used with any single gang back box or low voltage ring cannot be used in multi-gang installations
- (4) configurable fixed soft buttons on the left side that can be labeled
- Configurable page display (show/hide)
- Configurable home page with 0-8 buttons and 0-4 sliders
- Scene Page—shows all configured scene buttons and their labels
- Groups Page—shows all configured groups and their labels
- Configurable clock display
- Screen Saver: dim, shut off
- Proximity sensor to automatically restore from screen saver (touch always restores)
- Requires GreenMAX DRC Room Controller connected over LumaCAN
- Listed on the DesignLights Consortium® (DLC) Qualified Product List (QPL) for Networked Lighting Controls (NLC)
- Available colors—White, Black

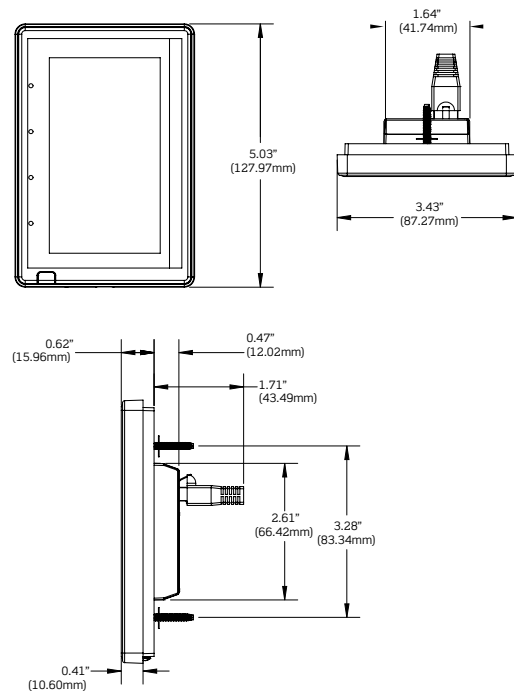
Wiring Diagram



Installation Diagram



Dimensions Diagram



Specifications

GreenMAX DRC Touch Screen	
Input Voltage	+12-24 VDC
Input Current	200 mA @ 12 VDC, 120 mA @ 24 VDC
IP Rating	21
Network Connections	LumaCAN via (2) RJ45 connections <ul style="list-style-type: none"> Termination provide via termination plug (LCTRM-RJ), one provided with each unit Use of feed-through RJ-45's plugs or shielded connector are not supported. Their use will void product warranty.
Network Topology	<ul style="list-style-type: none"> Daisy Chain, 1600 ft. max between repeaters Home-Run topology and network length up to 10,000 feet can be achieved when using LumaCAN network repeaters (Leviton# NPRPT) Maximum 110 nodes between repeaters Maximum 250 nodes on a LumaCAN network
Storage Temperature	32° to 104° F (0 to 40° C)
Operating Temperature	14° to 140° F (-10 to 60°C)
Warranty	2-Year

Ordering Information

GreenMAX DRC Touch Screen	
Cat. No.	Description
TS004-00W	GreenMAX DRC 4" Touch Screen, LumaCAN Interface only, requires DRC Room Controller, White
TS004-00E	GreenMAX DRC 4" Touch Screen, LumaCAN Interface only, requires DRC Room Controller, Black

Leviton Manufacturing Co., Inc. Lighting & Controls

10385 SW Avery Street, Tualatin, OR 97062 **tel** 800-736-6682 **tech line** (6:00AM-4:00PM PT Mon-Fri) 800-959-6004

Leviton Manufacturing Co., Inc. Global Headquarters

201 North Service Road, Melville, NY 11747-3138 **tel** 800-323-8920 **tech line** (8:00AM-10:00PM ET Mon-Fri, 9:00AM-7:00PM ET Sat, 9:00AM-5:00PM ET Sun) 800-824-3005

Visit our Website at: www.leviton.com/greenmaxdrc

©2024 Leviton Manufacturing Co., Inc. All rights reserved. Subject to change without notice.

LES-G-10743/J24-aa