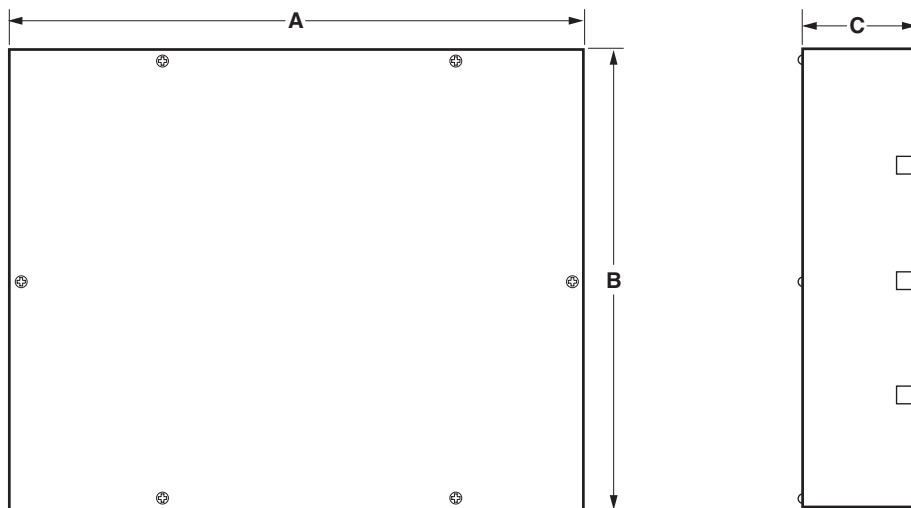


Distribution Equipment Gridiron Junction Boxes Designed for theatrical and studio applications



Leviton's Distribution Equipment is designed for use in theaters, television studios and other spaces where the distribution of power to lighting circuits is required. Our Distribution Equipment offers standard and complete custom options for any configuration. Leviton's Gridiron Junction Boxes provide a convenient place to terminate large numbers of conduits/circuits, providing the transition to multi-conductor cable or other requirements. Wire Mesh Safety Grips are available as an accessory and are required when using these junction boxes in environments where cable exits the box by methods other than EMT conduit.

FEATURES

- 16 gauge steel box and cover plate
- NEMA-1 screw cover enclosure
- Both hot and neutral terminals for each circuit
- Molded barrier terminal blocks accept #8 through #22 AWG wire with provision for circuit numbering
- Black industrial finish
- Available with 20A terminal standard, (2) for each circuit, 60A, 100A terminals and low voltage data termination available on custom configurations.
- UL Listed # E41104
- Limited 2-year warranty
- Knockouts punched by installer
- Write-on strip for installer labeling

ORDERING INFORMATION

Fill in the number of 20A circuits required from the chart below. Corresponding box dimensions are indicated in the right-hand column.

| Cat. No. | Maximum Number of 20A Circuits | Dimensions (in.) A x B x C |
|----------|--------------------------------|----------------------------|
| TDG00-6 | 6 | 12 x 8 x 4 |
| TDG00-13 | 13 | 18 x 10 x 4 |
| TDG00-21 | 21 | 24 x 12 x 4 |
| TDG00-34 | 34 | 24 x 15 x 6 |
| TDG00-63 | 63 | 30 x 24 x 6 |
| TDG00-87 | 87 | 36 x 24 x 6 |

Order example: TDG00-6, indicates a 12x8x4 size gridiron junction box with 6-20A circuits.

Write on labels provided for circuit labeling.

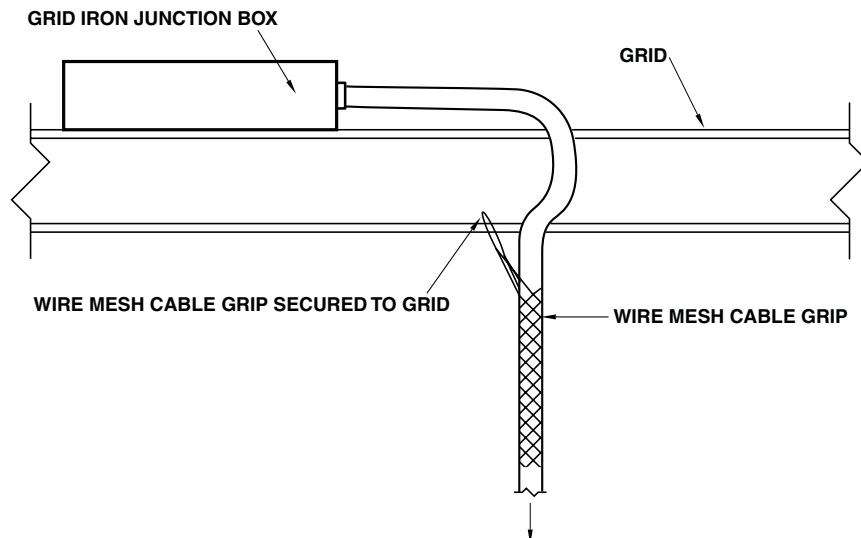
SPECIFICATION SUBMITTAL

| | | |
|-------------------------------------|--|----------------------|
| JOB NAME: <input type="text"/> | CATALOG NUMBERS: <input type="text"/> | |
| JOB NUMBER: <input type="text"/> | <input type="text"/> | <input type="text"/> |

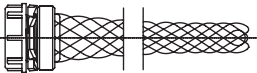
Product Specifications

Gridiron Junction Boxes

EXAMPLE INSTALLATION CONFIGURATION



ACCESSORIES



Single Weave Galvanized Steel Mesh

| CAT. NO. | CABLE DIA. RANGE (INCHES) | NPT SIZE (INCHES) | MESH LENGTH @ NOMINAL DIA. (INCHES) | MINIMUM DISTANCE BETWEEN GRIPS (INCHES) |
|----------|---------------------------|-------------------|-------------------------------------|---|
| L7501 | 0.22-0.32 | 1/2 | 4 | 1-1/4 |
| L7502 | 0.30-0.43 | 1/2 | 4-1/2 | 1-1/4 |
| L7503 | 0.40-0.54 | 1/2 | 5-1/2 | 1-1/4 |
| L7504 | 0.52-0.73 | 3/4 | 5-1/2 | 1-1/2 |
| L7505 | 0.70-0.97 | 1 | 8 | 1-7/8 |
| L7506 | 0.94-1.25 | 1-1/4 | 9 | 2-3/8 |
| L7507 | 1.20-1.50 | 1-1/2 | 11 | 2-5/8 |
| L7508 | 1.40-1.75 | 2 | 13 | 3-1/4 |
| L7509 | 1.62-2.00 | 2-1/2 | 13-1/2 | 3-5/8 |
| L7511 | 2.00-2.45 | 2-1/2 | 13-1/2 | 3-5/8 |

Offset Eye, Split Lace, Single Weave

| CAT. NO. | CABLE DIA. RANGE (INCHES) | APPROX. BREAK STRENGTH* | LENGTH (INCHES) BALE (DIM. A) | MESH (DIM. M) |
|----------|---------------------------|-------------------------|-------------------------------|---------------|
| L9601 | 0.50-0.61 | 770 | 4 | 11 |
| L9602 | 0.62-0.74 | 960 | 4 | 11 |
| L9603 | 0.75-0.99 | 960 | 4 | 14 |
| L9604 | 1.00-1.24 | 1,680 | 5 | 15 |
| L9605 | 1.25-1.49 | 1,680 | 5 | 16 |
| L9606 | 1.50-1.74 | 1,680 | 5 | 18 |
| L9607 | 1.75-1.99 | 2,640 | 8 | 20 |
| L9608 | 2.00-2.49 | 3,760 | 8 | 22 |
| L9609 | 2.50-2.99 | 3,760 | 8 | 24 |
| L9611 | 3.00-3.49 | 5,040 | 9 | 26 |
| L9612 | 3.50-3.99 | 5,040 | 9 | 28 |



Locking Bale, Split Lace, Single Weave

| CAT. NO. | CABLE DIA. RANGE (INCHES) | APPROX. BREAK STRENGTH* | LENGTH (INCHES) BALE (DIM. A) | MESH (DIM. M) |
|----------|---------------------------|-------------------------|-------------------------------|---------------|
| L9621 | 0.50-0.61 | 770 | 18 | 11 |
| L9622 | 0.62-0.74 | 1,150 | 18 | 11 |
| L9623 | 0.75-0.99 | 1,320 | 18 | 14 |
| L9624 | 1.00-1.24 | 1,920 | 18 | 15 |
| L9625 | 1.25-1.49 | 1,920 | 18 | 16 |
| L9626 | 1.50-1.74 | 1,920 | 18 | 18 |
| L9627 | 1.75-1.99 | 3,150 | 18 | 20 |
| L9628 | 2.00-2.49 | 3,360 | 18 | 22 |
| L9629 | 2.50-2.99 | 3,360 | 18 | 24 |

Leviton Mfg. Co., Inc.
P.O. Box 2210 • Tualatin, Oregon 97062 • Phone: (503)404-5500 • Fax: (503) 404-5600

Visit our Website at: www.lms.leviton.com



G-7525/F6-NSK