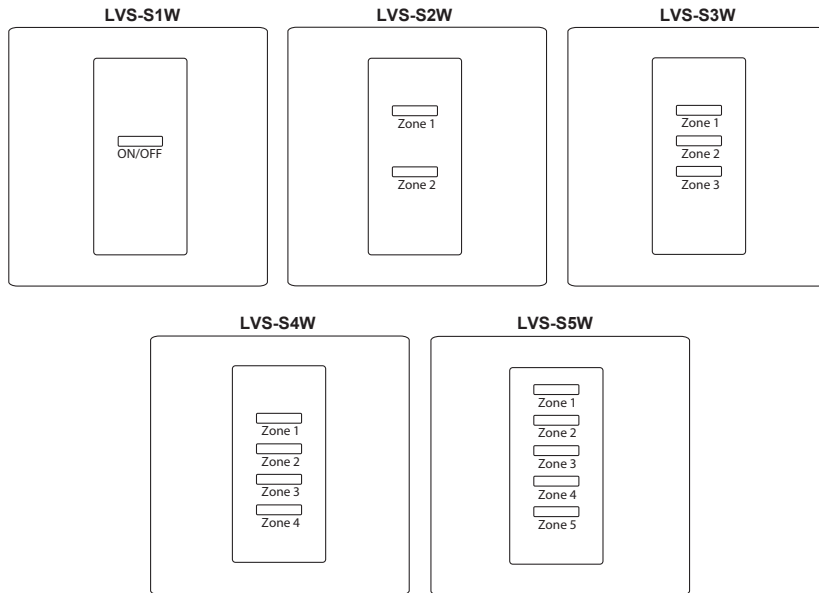


Low Voltage American Standard Switches



DESCRIPTION

The low voltage switch line from Leviton incorporates reliable technology into the contemporary Decora® style. They can be ordered from one button to 5 buttons per gang and are mounted in a standard deep switch box.

APPLICATIONS

- Office spaces -large and small
- Schools
- Churches
- Convention centers
- Parking lots
- Ballpark lighting—professional and recreational
- Municipal parks
- Residential lighting

FEATURES

- 1-5 buttons
- Status LED for each button provides true relay status
- Matching screw-less Decora wallplate
- Custom labeling is available from the factory or kits are available for use in the field
- Switches can be programmed for ON, OFF, ON/OFF, Groups, or Presets/Scenes when used in conjunction with a Z-MAX lighting Control Relay cabinet
- Low Voltage Switches work with:
 - Z-MAX Relay Cabinets
 - Low voltage equipment by others
- Dimensions: 3 5/16" H x 3 5/16" W x 1 3/8" D; use 2 1/4" deep switch box

PRODUCT DATA



SPECIFICATIONS

ELECTRICAL	
Input Power	24 VDC
Power Consumption	Unit Load Consumption @ 24 VDC 1 Unit Load = 25mA
	1 Button 0.5
	2 Button 0.8
	3 Button 1.1
	4 Button 1.4
	5 Button 1.7
ENVIRONMENTAL	
Operating Temperature Range	0°C-40°C (32°F-104°F)
Relative Humidity	Less than 90% non-condensing

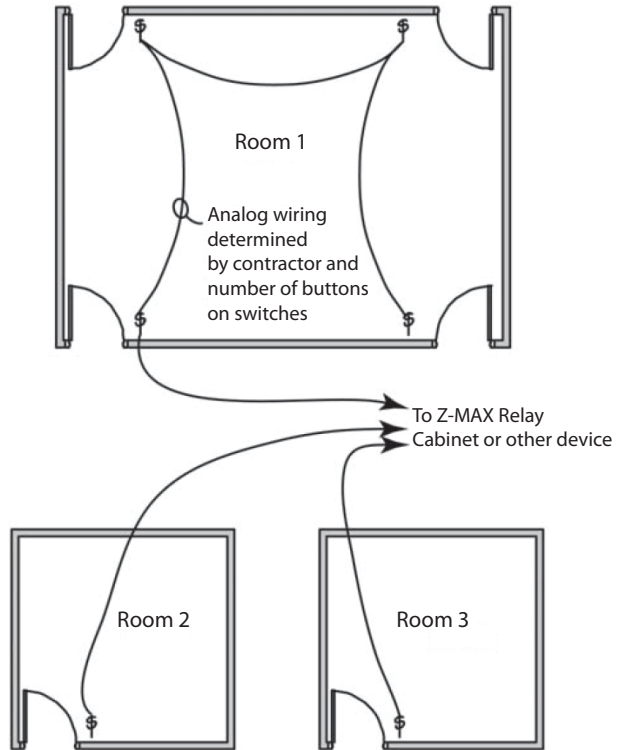
ORDERING INFORMATION

CAT. NO.*	DESCRIPTION
ooLVS-S1W	Low Voltage Switch, 3x3 Faceplate, 1 button, American Standard, white
ooLVS-S2W	Low Voltage Switch, 3x3 Faceplate, 2 button, American Standard, white
ooLVS-S3W	Low Voltage Switch, 3x3 Faceplate, 3 button, American Standard, white
ooLVS-S4W	Low Voltage Switch, 3x3 Faceplate, 4 button, American Standard, white
ooLVS-S5W	Low Voltage Switch, 3x3 Faceplate, 5 button, American Standard, white

WIRING

- 1 wire for +24vdc
- 2 wires per button
(1 wire for switch + 1 wire for LED)
- 1 wire for LED locator

INSTALLATION



LEVITON SPECIFICATION SUBMITTAL	
JOB NAME:	CATALOG NUMBERS:
JOB NUMBER:	

Leviton Manufacturing Co., Inc. Lighting & Energy Solutions

20497 SW Teton Avenue, Tualatin, OR 97062
 Telephone: 1-800-736-6682 • FAX: 503-404-5594 • Tech Line (6:00AM-4:00PM P.S.T. Monday-Friday): 1-800-959-6004

Leviton Manufacturing of Canada, Ltd.

165 Hymus Boulevard, Pointe Claire, Quebec H9R 1E9 • Telephone: 1-800-469-7890 • FAX: 1-800-563-1853

Leviton S. de R.L. de C.V.

Lago Tana 43, Mexico DF, Mexico CP 11290 • Tel. (+52) 55-5082-1040 • FAX: (+52) 5386-1797 • www.leviton.com.mx

Visit our Website at: www.leviton.com/les

© 2011 Leviton Manufacturing Co., Inc. All rights reserved. Subject to change without notice.

G-8519/C11-ak