

Wireless Companion Switch and Dimmer

Cat. Nos. SBK00-CSW (Switch) and SBK00-CDW (Dimmer)

Ratings: Battery 3VDC



WARNINGS:

- To avoid personal injury or death, keep new and used batteries out of the reach of children. Seek immediate medical attention if a battery is ingested and follow medical advice.
- This product is to be installed and/or used in accordance with electrical codes and regulations.
- If you are unsure about any part of these instructions, consult an electrician.

CAUTIONS:

- These devices rely on wireless RF communication.
- Use two CR2025 coin cell batteries ONLY. Do not use a rechargeable battery. Use of an improper battery may cause damage to the device.
- For indoor use only.
- These devices are for surface mount or wall box mount. They are not suitable for retrofit wall box installation where Class 1 wiring is present.

DI-000-SBK00-02A

INSTALLATION INSTRUCTIONS

ENGLISH

Product Description

The Leviton wireless companion switch (SBK00-CSW) and dimmer (SBK00-CDW) pair with smart ceiling room controllers or sensors to provide lighting control where needed. These devices can be mounted in an existing wallbox or to flat wall surface near an entry point. In addition, these devices are battery powered and do not require any wiring to a power source or to the smart ceiling room controllers or sensors.

NOTES:

- Two replaceable CR2025 batteries with 5-year battery life are included.
- Use to connect to Leviton's smart ceiling room controllers or sensors.

Installation Notes

- The SBK00-CSW switch and SBK00-CDW dimmer are battery-powered companion devices that use wireless RF technology for communication to Leviton smart ceiling room controllers or sensors.
- These devices do not connect directly to the load or lights. Control of the load or lights is through the Leviton smart ceiling room controllers or sensors, which are line voltage devices (sold separately).
- For best results, mount these devices within 50 ft of a smart ceiling room controller or sensor.
- Do not install these devices in metal wall boxes or with metal wallplates, as this may result in poor RF performance.

Installation in a Wallbox

WARNING: TO AVOID FIRE, SHOCK, OR DEATH, turn OFF power at the circuit breaker.

To install in a standard NEMA electrical box in single-gang or multi-gang installation:

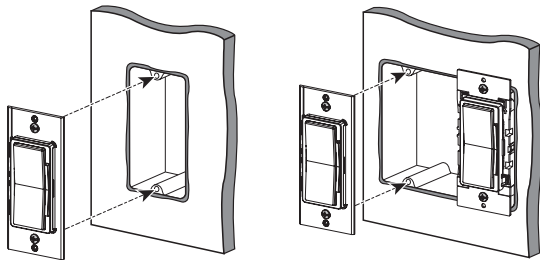
1. Take note of the TOP marking on the reverse side of the device.

NOTE: Make sure the device is within 50 ft of the smart room controller or sensor.

2. Line up the device with the screw holes in the desired location on the wallbox.

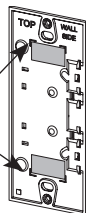
3. Insert and tighten the screws in the innermost screw holes of the wallbox. Do NOT overtighten the screws.

NOTE: Installation in a metal wall box can weaken the RF signal and reduce the wireless range.

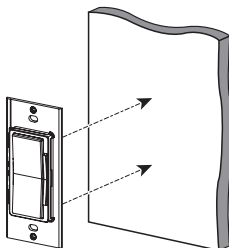


Installation on a Wall Surface

1. Select a clear wall surface within 50 ft of the smart room controller or sensor.
2. Place the included adhesive tape on the reverse side of the device, and align the top and bottom pieces of tape with the corner markings molded into the base.
3. Take note of the TOP and WALL SIDE markings on the back of the device and gently affix the device to the wall surface with the tape. Make sure the device is secure and level.



Back View



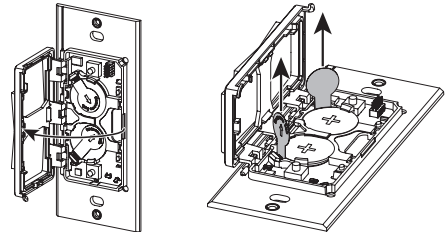
Front View

Powering ON

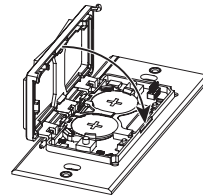
The device comes with two CR2025 batteries (already installed).

1. To power ON the device, place your finger on the indent in the base.
2. Open the device by gently rotating the frame to the left using the hinges.
3. Grasp and pull up each pull tab by its circular portion to remove. Remove both pull tabs (one for each battery). This powers ON the device and puts it in the pairing mode.

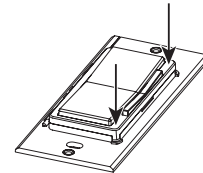
NOTE: The Status LED flashes GREEN.



4. Close the device by gently rotating the frame to the right using the hinges.



5. Press down firmly in the corners until the device snaps closed.



Pairing

Follow the steps below to pair the device with a compatible smart ceiling room controller or sensor.

NOTES:

- Activate and pair one device at a time.
- Make sure the device is close to the line voltage sensor to connect successfully and reduce interference.
- In addition, you can mount in a wallbox or on a wall surface after you pair the device.

1. Download and open the Smart Sensor app.
2. Make sure the device is in the Pairing mode and the Status LED is blinking GREEN.

NOTE: If not paired after 10 minutes, the device goes into a standby state to preserve battery life. To place it back into the Pairing mode, press the top rocker five times. The Status LED flashes GREEN.

3. Find the SBK00 device you want to pair with the smart room controller or sensor.
4. Follow the prompts in the app to pair a "wireless companion" device.
5. Once the device has been installed and successfully paired, test control by pressing the rocker ON and OFF, and confirm that the lights work properly.

NOTES:

- Control options include primary load, secondary load (if applicable), and 3-way (if applicable)
- If you accidentally connect to the wrong smart room controller or sensor, restart the pairing process and connect to the appropriate device using the Smart Sensor app.

Factory Default Reset

1. Hold the top rocker for 14 seconds.
2. After the first 7 seconds, the status light will turn AMBER. Continue to hold.
3. After 7 more seconds, the status light will quickly flash RED/AMBER.
4. Release the top rocker and the device will reset. This will remove all pairing associations.

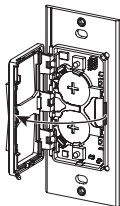
Attach the Wallplate

You can attach any Decora®-style standard or screwless wallplate in single- and multi-gang configurations.

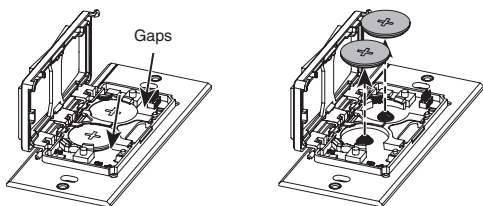
1. Insert the screws into the outermost screw holes of the wallplate mounting bracket, and tighten until snug. Do NOT overtighten.
2. Snap on the wallplate.

Changing the Batteries

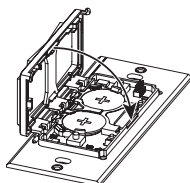
1. Remove the wallplate. (If using a screwless wallplate, you do not have to remove the mounting bracket.)
2. Place your finger on the indent in the base, and open the device by gently rotating the frame to the left using the hinges.



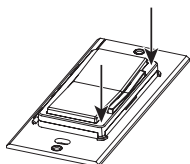
3. Place your finger in the gaps indicated by the arrows, and gently lift the batteries out of the holder. While lifting the batteries, press on battery holder tabs to release batteries.



4. In each battery space, insert a CR2025 battery only.
5. Close the device by gently rotating the frame to the right using the hinges.



6. Press down firmly in the corners until the device snaps closed.
7. Re-attach the wallplate.



FCC STATEMENT

This equipment has been tested and found to comply with the limits for a Class B digital device, pursuant to part 15 of the FCC Rules. These limits are designed to provide reasonable protection against harmful interference in a residential installation. This equipment generates, uses and can radiate radio frequency energy and, if not installed and used in accordance with the instructions, may cause harmful interference to radio communications. However, there is no guarantee that interference will not occur in a particular installation. If this equipment does cause harmful interference to radio or television reception, which can be determined by turning the equipment off and on, the user is encouraged to try to correct the interference by one or more of the following measures:

- Reorient or relocate the receiving antenna.
- Increase the separation between the equipment and receiver.
- Connect the equipment into an outlet on a circuit different from that to which the receiver is connected.
- Consult the dealer or an experienced radio/TV technician for help.

IC STATEMENT

This device complies with Industry Canada licence-exempt RSS standard(s). Operation is subject to the following two conditions: (1) this device may not cause interference, and (2) this device must accept any interference, including interference that may cause undesired operation of the device.

FCC SUPPLIERS DECLARATION OF CONFORMITY (sDoC): Models SBK00-CSW (Switch) and SBK00-CDW (Dimmer) are manufactured by Leviton Manufacturing, Inc., 201 N. Service Road, Melville, NY, www.leviton.com. This device complies with part 15 of the FCC Rules. Operation is subject to the following two conditions: (1) This device may not cause harmful interference, and (2) this device must accept any interference received, including interference that may cause undesired operation.

Any changes or modifications not expressly approved by Leviton Manufacturing Co., could void the user's authority to operate the equipment.

LIMITED 5 YEAR WARRANTY AND EXCLUSIONS

Leviton warrants to the original consumer purchaser and not for the benefit of anyone else that this product at the time of its sale by Leviton is free of defects in materials and workmanship under normal and proper use for five years from the purchase date. Leviton's only obligation is to correct such defects by repair or replacement, at its option. For details visit www.leviton.com or call 1-800-824-3005. This warranty excludes and there is disclaimed liability for labor for removal of this product or reinstallation. This warranty is void if this product is installed improperly or in an improper environment, overloaded, misused, opened, abused, or altered in any manner, or is not used under normal operating conditions or not in accordance with any labels or instructions. There are no other or implied warranties of any kind, including merchantability and fitness for a particular purpose, but if any implied warranty is required by the applicable jurisdiction, the duration of any such implied warranty, including merchantability and fitness for a particular purpose, is limited to five years. Leviton is not liable for incidental, indirect, special, or consequential damages, including without limitation, damage to, or loss of use of, any equipment, lost sales or profits or delay or failure to perform this warranty obligation. The remedies provided herein are the exclusive remedies under this warranty, whether based on contract, tort or otherwise.

Specifications

Type	Specification
Operating Temperature	32°F - 104°F (0°C - 40°C)
Operating Humidity	Relative humidity (non-condensing): 10%-90%
Storage Temperature Range	14°F - 185°F (10° - 85°C)
Batteries	CR2025 x2; 3 V
Network	2.4 GHz
Range	50 ft
IP Rating	IP20

Status LEDs

Color	Activity	Status
Not Lit	N/A	Normal Operation.
GREEN	Solid	Button has been pressed (normal feedback) and device pairing confirmation.
GREEN	Fast Blink	Device is in the Pairing mode.
AMBER	Slow Blink	Device lost its connection to the Smart Ceiling room controller or sensor.
RED	Slow Blink	Low battery.

Diagnostic LEDs

If the device does not function as expected, the Status LEDs can be used to diagnose issues. Press the top rocker for at least 2 seconds, but fewer than 7 seconds, and then release it. The device blinks GREEN, AMBER, or RED for two seconds, depending on the issue. The meaning of each color is described in the table below.

Color	Issue
GREEN	Normal operation. Connected properly.
AMBER	Device has lost its connection to the Smart Ceiling room controller or sensor.
RED	Low battery.

What to do if...

If the device is not performing as expected, review the troubleshooting information below, or contact Leviton's Technical Support team.

The device does not pair to the smart room controller or sensor.

- Make sure you are pairing to a compatible device.
- Ensure the device is within 50 ft of the room controller or sensor. In addition, make sure you followed the pairing instructions in the Smart Sensor app completely.

How do I know if I have a compatible smart room controller or sensor?

Go to leviton.com/smartsensors for additional product details and list of compatible devices.

The device has an intermittent connection to the room controller or sensor:

- Ensure the device is within 50 ft of the room controller or sensor.
- This device does not transmit through exterior surfaces. Environmental factors can impact the wireless signal. Before installing, consider materials, such as concrete or steel reinforced floors, ceilings, walls, masonry, cinder block, and reinforced materials, such as plaster and stucco that may interfere with the wireless signal.
- Check to make sure the device does not have a low battery. (See the Diagnostic LEDs table.)

Can one wireless switch or dimmer control multiple smart room controllers or sensors?

Yes. If the room controllers or sensors are grouped together using the Smart Sensor app and the switch configuration is set to "Network", the device can control all devices.

How do you clean the device?

Use a damp cloth with mild soap. DO NOT use disinfecting products, including foggers, sprays, or other types of atomized cleaning agents.

RF EXPOSURE AND CO-LOCATION: To comply with FCC OET Bulletin 65 and ISED RF exposure limits for general population and uncontrolled exposure, this device shall be installed and operated with a minimum distance of 7.9 inches (20 cm) between the radiator and your body. Also, must not be co-located or operated in conjunction with any other antenna or transmitter.

Patents covering this product, if any, can be found on www.leviton.com/patents.

LEVITON and the Leviton logo are trademarks of Leviton Manufacturing Co., Inc.

FOR CANADA ONLY

For warranty information and/or product returns, residents of Canada should contact Leviton in writing at Leviton Manufacturing of Canada ULC to the attention of the Quality Assurance Department, 165 Hymus Blvd, Pointe-Claire (Quebec), Canada H9R 1E9 or by telephone at 1-800-405-5320.