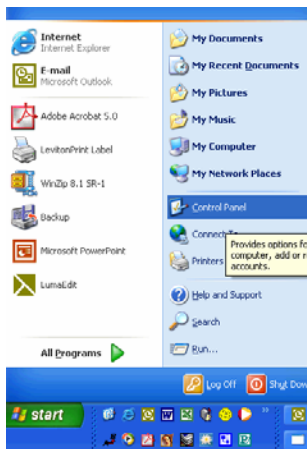


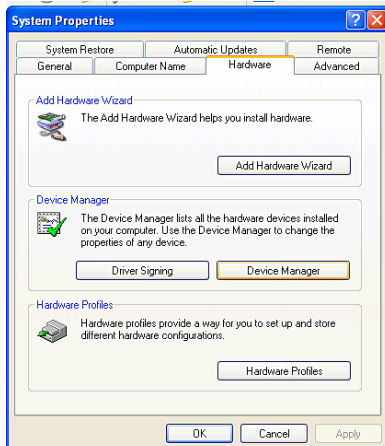
USB to Serial Interface for use with LumaEdit

In the event your computer does not have a 9 pin serial port, you will need to purchase a USB to Serial converter. This device is typically assigned Com port # 5, which LumaEdit 2.31 does not currently support. Here is how you change the settings on your computer to get around this problem. The instructions shown below are for Windows XP, but Windows 2000 is a very similar process, the screens just look slightly different.

1. Go to the start Menu and select the Control Panel

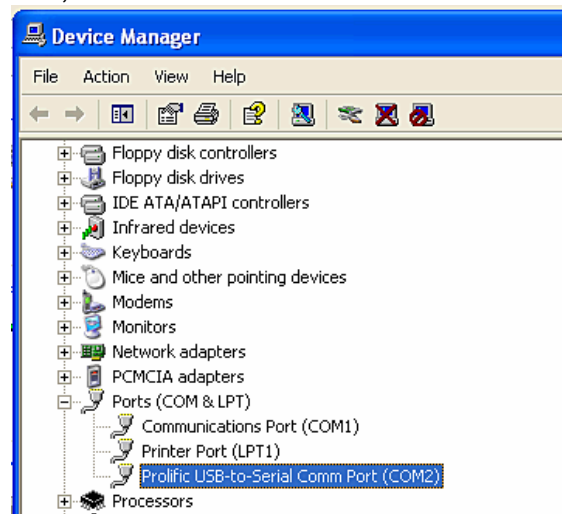


2. From the Control Panel, select Systems
3. From Systems, press the Hardware Tab

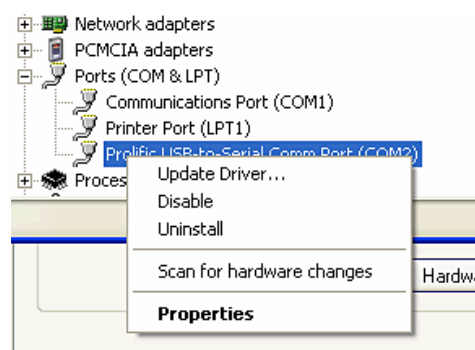


- 4.
5. Next press the Device Manager button midway down the box.

6. Locate the Ports (COM & LPT) line and click on the + box to the left of the line,

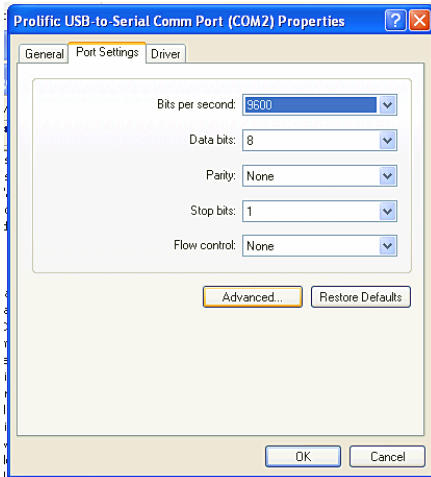


7. Right Click on the USB-Serial-Converter line



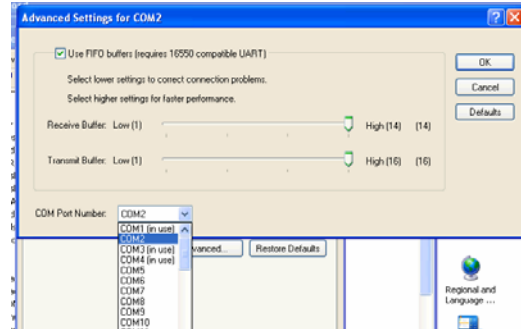
8. Click on Properties

9. Click on the Port Settings Tab



10. Click on the advanced button

11. Change the Com port to an unused port less than 4. Com 2 is typically available.



12. Click OK.

You are now ready to the serial interface in LumaEdit. Remember to change the Com port settings in LumaEdit to Com port 2.

Please call our Technical Services group at 1-800-864-2502, if you have any additional problems or questions.



Leviton Lighting Control Division Headquarters
20497 SW Teton Avenue, Tualatin, OR 97062
Customer Service Telephone: 1-800-736-6682 • FAX: 1-503-404-5600
Tech Line: 1-800-959-6004

Leviton Manufacturing Co., Inc.
59-25 Little Neck Parkway, Little Neck, NY 11362-2591
Telephone: 1-800-323-8920 • FAX: 1-800-832-9538

Visit Leviton's Web site at <http://www.leviton.com> and <http://www.nsicorp.com>
© 2002 Leviton Manufacturing Co., Inc. All Rights Reserved
Specifications and Pricing Subject to Change at any time